

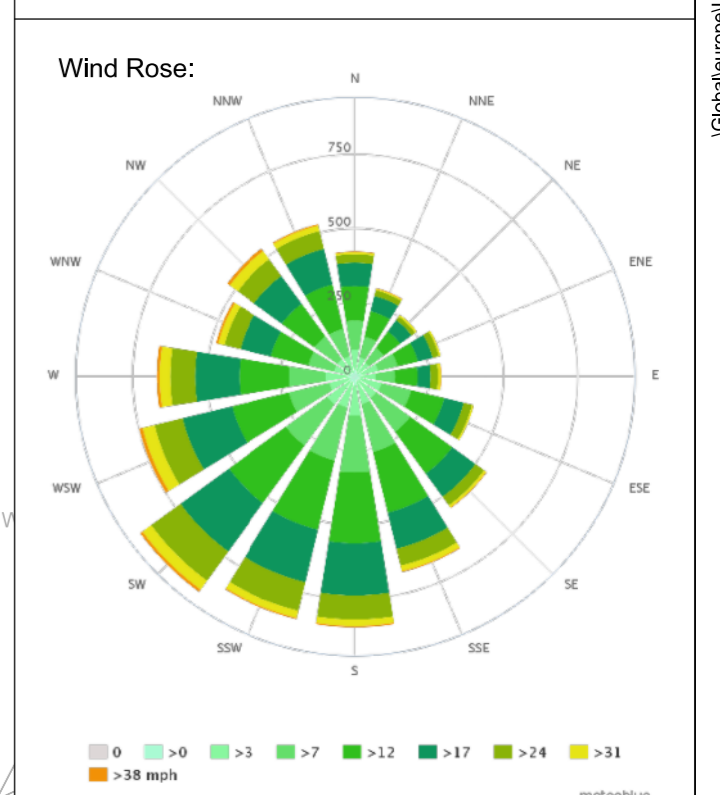
**Key:**

- Land ownership boundary
- Construction Phase Security Fence
- Topographical survey
- Proposed layout
- 3m high Environmental / acoustic barrier
- Safety Bund
- Proposed drainage ditch
- Surface water drainage attenuation pond
- Surface water drainage wetland
- Telecommunication mast
- D-wall

**Key to utilities:**

- HV Existing Northern Powergrid electrical apparatus

**NYMNP**  
21/03/2019



- North surface substation
- Temporary storage containers.
- Ventilation System.
- Production shaft substation.
- Production shaft.
- Temporary winch house.
- Service shaft.
- Temporary winch house.
- Completion of foreshaft excavation and operation of contingency grouting, and mechanical excavation to -120m.
- Service shaft substation.
- Ventilation System.
- Erection of temporary storage unit for winder equipment.
- Installation of drying rooms.
- Temporary storage containers.
- Installation of oxygen tanks and cabin.
- Temporary warehouses and workshop.
- NPG kiosk and access road.
- Woodsmith main switchroom
- Water supply tanks, including reticulation, piping and pumping.
- Electrical transformer

- Temporary winch house.
- Installation of air compressor shed.
- Temporary storage containers.
- Installation of grout shed.
- Central surface substation
- East surface substation.
- Temporary storage bund.
- Electrical supply kiosk.
- South surface substation
- Haxby Plantation
- LNG and generator platform.

0	21/03/19	JB	AH	AH	For issue
A	15/03/19	CG	JB	CW	For comment
Issue	Date	By	Chkd	Appd	

## ARUP

Admiral House, Rose Wharf,  
78 East Street, Leeds, LS9 8EE  
www.arup.com

Client  
**Sirius Minerals Plc**

Job Title  
**Woodsmith Mine  
Proposed Minehead**

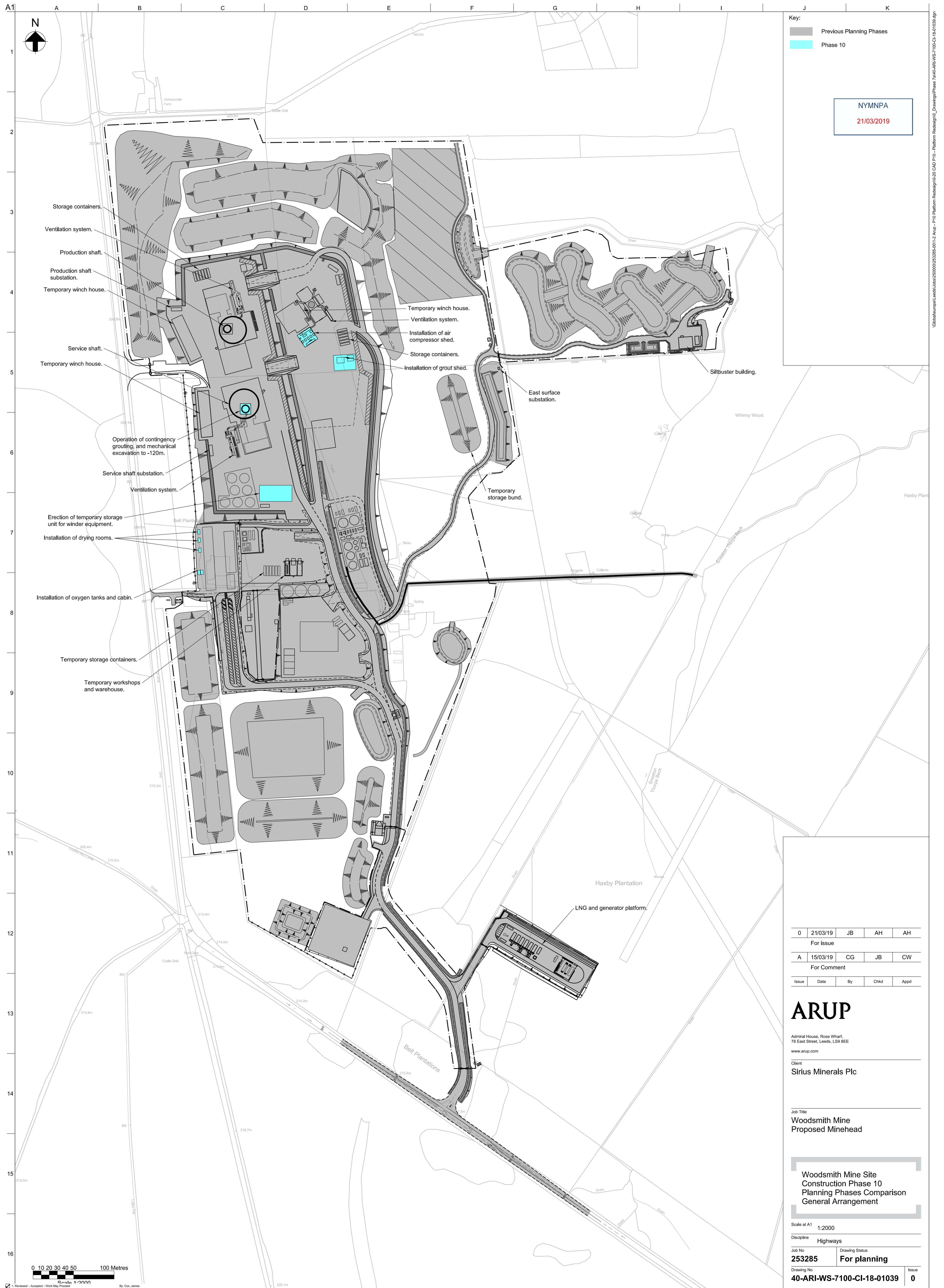
**Woodsmith Mine  
Construction Phase 10  
Masterplan**

Scale at A1 1:2000

Discipline **Highways**

Job No **253285** Drawing Status **For planning**

Drawing No **40-ARI-WS-7100-CI-18-01038** Issue **0**



Key:  
 Previous Planning Phases  
 Phase 10

NYMNP  
 21/03/2019

0	21/03/19	JB	AH	AH
For issue				
A	15/03/19	CG	JB	CW
For comment				
Issue	Date	By	Chkd	Appd

**ARUP**  
 Admiral House, Rose Wharf,  
 79 East Street, Leeds, LS9 8EE  
 www.arup.com  
 Client  
 Sirius Minerals Plc

Job Title  
 Woodsmith Mine  
 Proposed Minehead

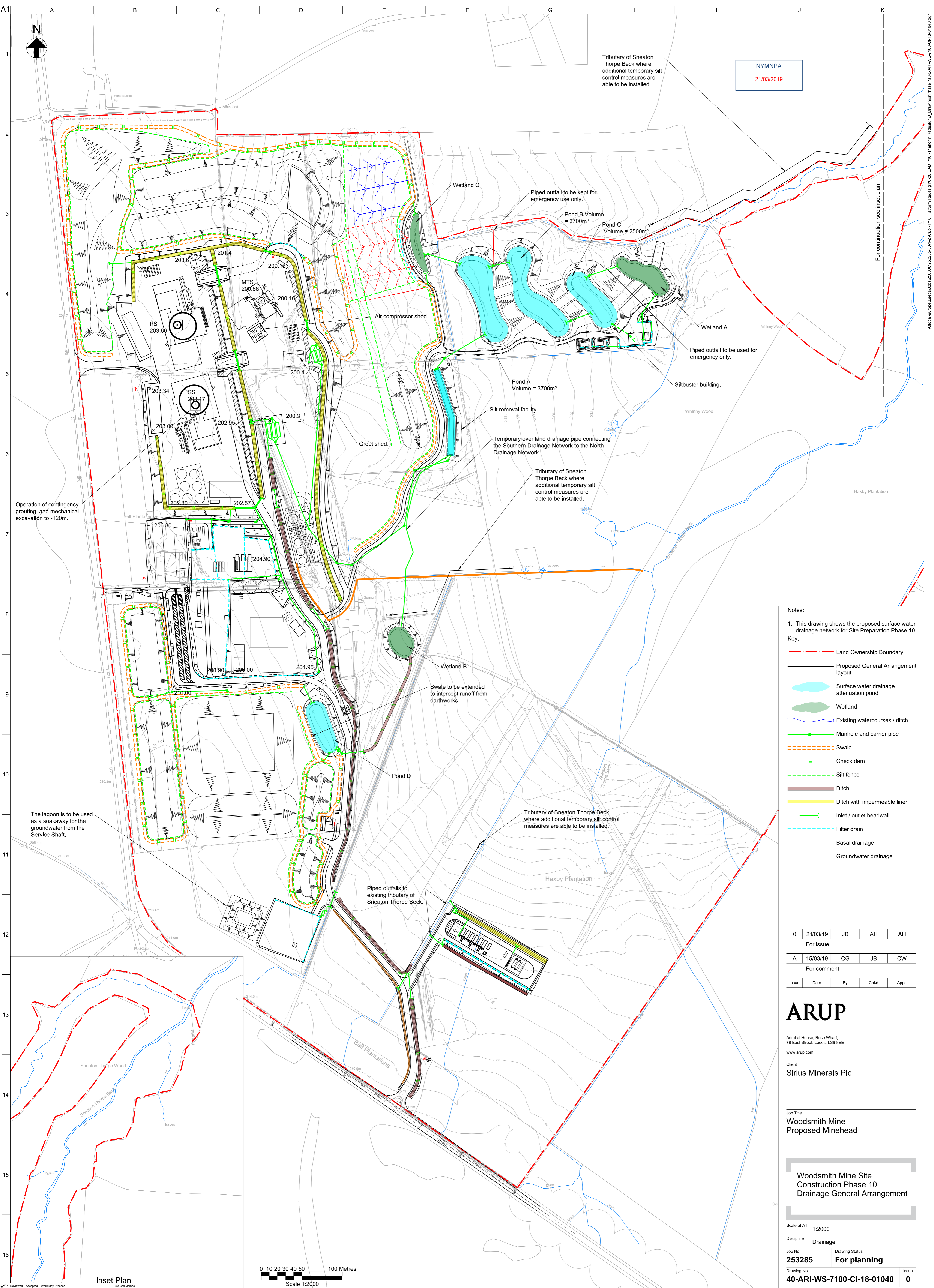
Woodsmith Mine Site  
 Construction Phase 10  
 Planning Phases Comparison  
 General Arrangement

Scale at A1 1:2000  
 Discipline Highways  
 Job No 253285 Drawing Status For planning  
 Drawing No 40-ARI-WS-7100-CI-18-01039 Issue 0

0 10 20 30 40 50 100 Metres  
 Scale 1:2000  
 By: Cox, James  
 On: 21 Mar 2019 16:58

1. Reviewed - Accepted - Work May Proceed  
 2. Reviewed - Accepted As Noted, Work May Proceed, Revise & Resubmit  
 3. Reviewed - Work Not Proceed, Revise & Resubmit  
 4. For information only

G:\b\arup\leeds\250000253285-01-12-Arup - P10 Platform Redesign\10-20 CAD P10 - Platform Redesign\0\_Drawing\Phase 7\40-ARI-WS-7100-CI-18-01039.dgn © Arup



NYMNPA  
21/03/2019

Tributary of Sneaton Thorpe Beck where additional temporary silt control measures are able to be installed.

For continuation see inset plan

Operation of contingency grouting, and mechanical excavation to -120m.

The lagoon is to be used as a soakaway for the groundwater from the Service Shaft.

Wetland C

Piped outfall to be kept for emergency use only.

Pond B Volume = 3700m<sup>3</sup>

Pond C Volume = 2500m<sup>3</sup>

Air compressor shed.

Wetland A

Piped outfall to be used for emergency only.

Pond A Volume = 3700m<sup>3</sup>

Siltbuster building.

Silt removal facility.

Temporary over land drainage pipe connecting the Southern Drainage Network to the North Drainage Network.

Grout shed.

Tributary of Sneaton Thorpe Beck where additional temporary silt control measures are able to be installed.

Wetland B

Swale to be extended to intercept runoff from earthworks.

Pond D

Tributary of Sneaton Thorpe Beck where additional temporary silt control measures are able to be installed.

Piped outfalls to existing tributary of Sneaton Thorpe Beck.

- Notes:
- This drawing shows the proposed surface water drainage network for Site Preparation Phase 10.
- Key:
- Land Ownership Boundary
  - Proposed General Arrangement layout
  - Surface water drainage attenuation pond
  - Wetland
  - Existing watercourses / ditch
  - Manhole and carrier pipe
  - Swale
  - Check dam
  - Silt fence
  - Ditch
  - Ditch with impermeable liner
  - Inlet / outlet headwall
  - Filter drain
  - Basal drainage
  - Groundwater drainage

0	21/03/19	JB	AH	AH
For issue				
A	15/03/19	CG	JB	CW
For comment				
Issue	Date	By	Chkd	Appd

**ARUP**  
Admiral House, Rose Wharf,  
78 East Street, Leeds, LS9 9EE  
www.arup.com

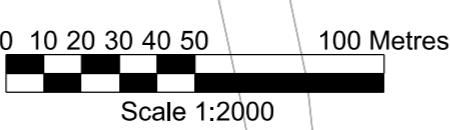
Client  
**Sirius Minerals Plc**

Job Title  
**Woodsmith Mine  
Proposed Minehead**

**Woodsmith Mine Site  
Construction Phase 10  
Drainage General Arrangement**

Scale at A1 1:2000  
Discipline Drainage  
Job No 253285  
Drawing No 40-ARI-WS-7100-CI-18-01040  
For planning  
Issue 0

**Inset Plan**  
By: C. James  
On: 21 Mar 2019 17:02

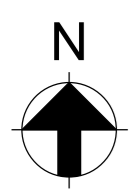


1. Reviewed - Accepted - Work May Proceed  
2. Reviewed - Accepted As Noted, Work May Proceed, Revise & Resubmit  
3. Reviewed - Work May Not Proceed, Revise & Resubmit  
4. For information only

G:\Global\Projects\Leeds\250000\253285-001\2\_Arup - P10 Platform Redesign\0-20 CAD P10 - Platform Redesign\Phase 7\40-ARI-WS-7100-CI-18-01040.dgn



NYMNP  
21/03/2019



Key:

- Hard landscaping
- Soft landscaping
- Existing trees
- Land ownership boundary
- Construction phase security fence

0	21/03/19	JB	AH	AH	
For issue					
A	15/03/19	CG	JB	CW	
For comment					
Issue	Date	By	Chkd	Appd	

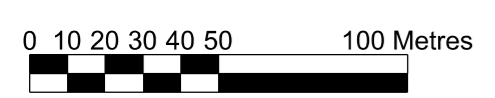
**ARUP**  
Admiral House, Rose Wharf,  
78 East Street, Leeds, LS9 8EE  
www.arup.com

Client  
**Sirius Minerals Plc**

Job Title  
**Woodsmith Mine  
Proposed Minehead**

**Woodsmith Mine  
Construction Phase 10  
Hard and Soft Landscaping Plan**

Scale at A1 1:2000  
Discipline Highways  
Job No 253285 Drawing Status For comment  
Drawing No 40-ARI-WS-7100-CI-18-01041 Issue 0



1. Reviewed - Accepted - Work May Proceed  
2. Reviewed - Accepted As Noted, Work May Proceed, Revise & Resubmit  
3. Reviewed - Work May Not Proceed, Revise & Resubmit  
4. For information only

By: Cox, James  
On: 21 Mar 2019 17:03

I:\Global\Projects\Leeds\250000\253285-0112\_Arup - P10 Platform Redeign\0-20 CAD P10 - Platform Redeign\Phase 7\40-ARI-WS-7100-CI-18-01041.dgn