

NYMNP

28/03/2019

From: James Cox
Sent: 28 March 2019 08:00
To: Rob Smith
Subject: RE: Woodsmith Mine - Phase 8 (NYM/2018/0771/CVC) [NLP-DMS.FID262297]

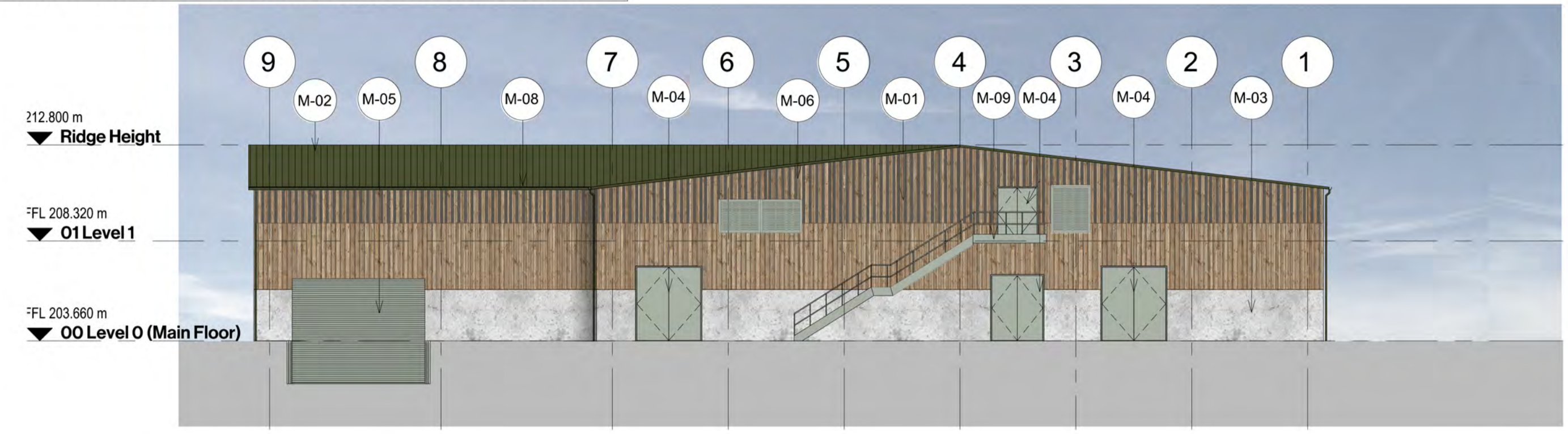
Rob,

Please find attached revised drawings the Production Shaft and Service Shaft buildings that reflect the on-site discussions held on 08/03 and 21/03. The revised plans reflect the following tweaks, in comparison to the those originally submitted as part of Phase 8 application:

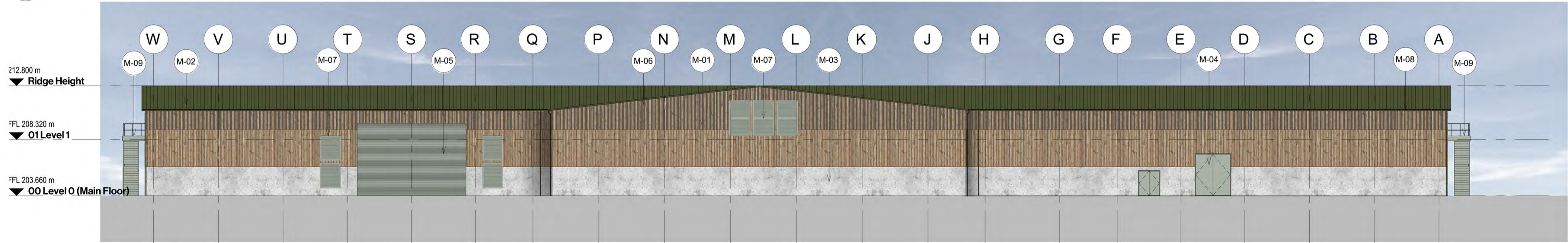
- A dark green (RAL 160 20 10) finish to the roof. This will have a non-reflective finish that will continue to dull down once it has been subjected to weather.
- Uniform wide timbers to the bottom section of the elevation;
- The retention (and slight extension) of the narrow timber board cladding to the top section of the elevation;
- Grey internal cladding;
- Light grey finishes to windows, louvres, doors etc to blend in with the natural aging of the timber; and
- A darker to the cement blocks.

Kind regards,

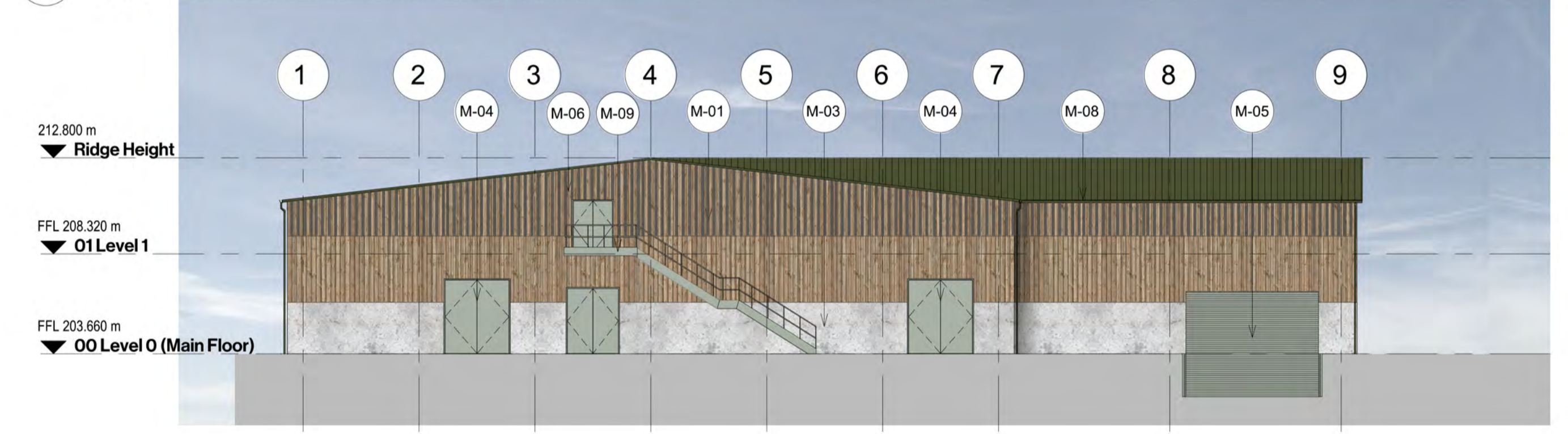
James Cox
Associate Director
Lichfields, 3rd Floor, 15 St Paul's Street, Leeds LS1 2JG



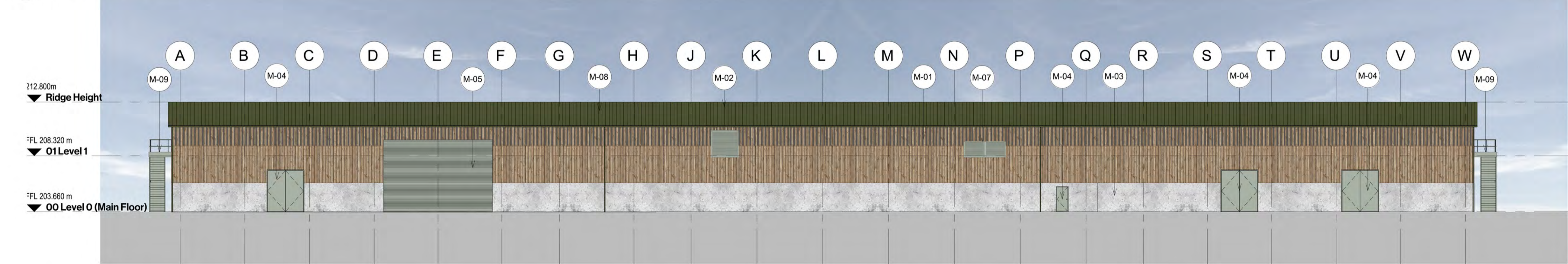
1 GA North Elevation
1 : 200



2 GA East Elevation
1 : 200



3 GA South Elevation
1 : 200



4 GA West Elevation
1 : 200

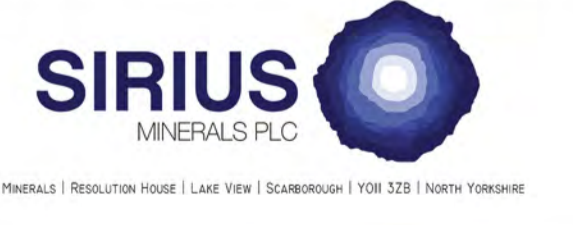
Notes
Unless indicated, this drawing is for information only and should not be used for construction. Do not scale, use figured dimensions only. All dimensions to be checked on site. This drawing should be printed and read at the original size, as stated above. Cartwright Pickard Architects accepts no responsibility for errors that occur as a result of reviewing this drawing at any other size.
Cartwright Pickard Architects prepared this drawing using Revit 2018.3 and does not accept liability for any loss or degradation of that information held in the drawing resulting from the translation from the original file format to any other file format or from the recipient's reading of it in any other programme or an earlier version of the programme referred to above. Cartwright Pickard Architects accepts no liability for use of this drawing by parties other than the party for whom it was prepared or for purposes other than those for which it was prepared.
DWG Issues
When this drawing is issued in DWG format it is an uncontrolled version and is provided to enable the recipient to prepare its own documents/drawings for which it is solely responsible. It is based on background information current at the time of issue.
Cartwright Pickard Architects accepts no liability for any alterations, additions to or discrepancies arising out of changes to such background information which occur after it has been issued to Cartwright Pickard Architects.

NOTES / KEY
NOTE
The plans and/or sections and elevations shown on this drawing are based on the designs of DMC Mining UK's subcontractor (Tetra Tech) received on 02 Nov 2018 and 09 Nov 2018, which CP relies on as being accurate and current at the time of receipt by Cartwright Pickard (CP).
CP has not checked the information and accepts no liability for it, or any alterations, additions or discrepancies arising out of changes made by DMC Mining, Tetra Tech and/or any other persons to the information after it was first issued to CP.

- MATERIAL KEY**
- M-01 Timber wall cladding (wide timber board & narrow gap)
 - M-02 PPC 'Juniper Green' non-reflective coated profiled sheet metal roof cladding (RAL 160 20 10 / BS 12B29)
 - M-03 Concrete panel cladding
 - M-04 PPC 'Agate Grey' non-reflective coated metal industrial access door (RAL 7038)
 - M-05 PPC 'Agate Grey' non-reflective coated metal industrial roller shutter (RAL 7038)
 - M-06 Timber wall cladding (narrow timber board & wide gap)
 - M-07 PPC 'Agate Grey' galvanised metal ventilation panel (RAL 7038)
 - M-08 PPC 'Juniper Green' non-reflective rainwater goods (RAL 160 20 10 / BS 12B29)
 - M-09 PPC 'Agate Grey' non-reflective metal staircase (RAL 7038)

IN PROGRESS
SUBJECT TO SPECIALIST INPUT & DESIGN TEAM REVIEW

REVISION	DESCRIPTION	DATE	BY	CHKD	APPD
H	RAL COLOUR UPDATED	25/03/19	AK	JS	IW
G	TIMBER CLADDING AMENDED	20/03/19	AK	JS	IW
F	RAL COLOURS UPDATED	11/03/19	AK	JS	IW
E	RAL COLOUR AMENDED	05/03/19	AK	JS	IW
D	AMENDED FURTHER TO COMMENTS	22/02/19	AK	JS	IW
C	AMENDED FURTHER TO COMMENTS	19/02/19	AK	JS	IW
B	TIMBER CLADDING AMENDED	19/02/19	AK	JS	IW
A	UPDATED TO SHOW PITCH COMPARISON	13/02/19	AK	JS	IW
-	FIRST ISSUE	11/02/19	AK	JS	IW



DRAWING TITLE: Production Shaft Setting Out Elevations

SCALE @ A1: As indicated

CONT No: 854-CPA-ZC-ZZ-DR-A-2170

DRG No: DMC-WS-P-0150-1100-AR-DR11-2170

REV: H

<input type="checkbox"/> 1. Reviewed - Accepted - Work May Proceed	By:
<input type="checkbox"/> 2. Reviewed - Accepted As Noted, Work May Proceed, Revise & Resubmit	On:
<input type="checkbox"/> 3. Reviewed - Work May Not Proceed, Revise and Resubmit	
<input type="checkbox"/> 4. For information Only	

THIS DRAWING IS CONFIDENTIAL AND THE PROPERTY OF SIRIUS MINERALS PLC IT MUST NOT BE COPIED WITHOUT WRITTEN CONSENT

Notes
 Unless indicated, this drawing is for information only and should not be used for construction. Do not scale, use figured dimensions only. All dimensions to be checked on site. This drawing should be printed and read at the original size, as stated above. Cartwright Pickard Architects accepts no responsibility for errors that occur as a result of reviewing this drawing at any other size.
 Cartwright Pickard Architects prepared this drawing using Revit 2018.3 and does not accept liability for any loss or degradation of that information held in the drawing resulting from the translation from the original file format to any other file format or from the recipient's reading of it in any other programme or an earlier version of the programme referred to above. Cartwright Pickard Architects accepts no liability for use of this drawing by parties other than the party for whom it was prepared or for purposes other than those for which it was prepared.
DWG Issues
 When this drawing is issued in DWG format it is an uncontrolled version and is provided to enable the recipient to prepare its own documents/drawings for which it is solely responsible. It is based on background information current at the time of issue.
 Cartwright Pickard Architects accepts no liability for any alterations to, additions to or discrepancies arising out of changes to such background information which occur after it has been issued by Cartwright Pickard Architects.

NOTES / KEY
NOTE
 The plans and/or sections and elevations shown on this drawing are based on the designs of DMC Mining UKs subcontractor (Tetra Tech) received on 28th Jan 2019, which Cartwright Pickard (CP) relies on as being accurate and current at the time of receipt by CP.
 CP has not checked the information and accepts no liability for it, or any alterations, additions or discrepancies arising out of changes made by DMC Mining, Tetra Tech and/or any other persons to the information after it was first issued to CP.

- MATERIAL KEY**
- M-01 Timber wall cladding (wide timber board & narrow gap)
 - M-02 PPC 'Juniper Green' non-reflective coated profiled sheet metal roof cladding (RAL 160 20 10 / BS 12B29)
 - M-03 Concrete panel cladding
 - M-04 PPC 'Agate Grey' non-reflective coated metal industrial access door (RAL 7038)
 - M-05 PPC 'Agate Grey' non-reflective coated metal industrial roller shutter (RAL 7038)
 - M-06 Timber wall cladding (narrow timber board & wide gap)
 - M-07 PPC 'Agate Grey' galvanised metal ventilation panel (RAL 7038)
 - M-08 PPC 'Juniper Green' non-reflective rainwater goods (RAL 160 20 10 / BS 12B29)
 - M-09 PPC 'Agate Grey' non-reflective metal staircase (RAL 7038)

IN PROGRESS
 SUBJECT TO SPECIALIST INPUT &
 DESIGN TEAM REVIEW

REVISION	DESCRIPTION	DATE	BY	CHKD	APPD
N	RAL COLOUR UPDATED	25/03/19	AK	JS	IW
M	CLADDING INTERSECTION LOCATION UPDATED	15/03/19	AK	JS	IW
L	RAL COLOURS UPDATED	11/03/19	AK	JS	IW
K	RAL COLOUR AMENDED	05/03/19	AK	JS	IW
J	UPDATED FURTHER TO COMMENTS	20/02/19	AK	JS	IW
H	UPDATED FURTHER TO COMMENTS	20/02/19	AK	JS	IW
G	UPDATED FURTHER TO COMMENTS	19/02/19	AK	JS	IW
F	UPDATED FURTHER TO COMMENTS	18/02/19	AK	JS	IW
E	UPDATED TO REVISED ROOF PITCHES	18/02/19	AK	JS	IW



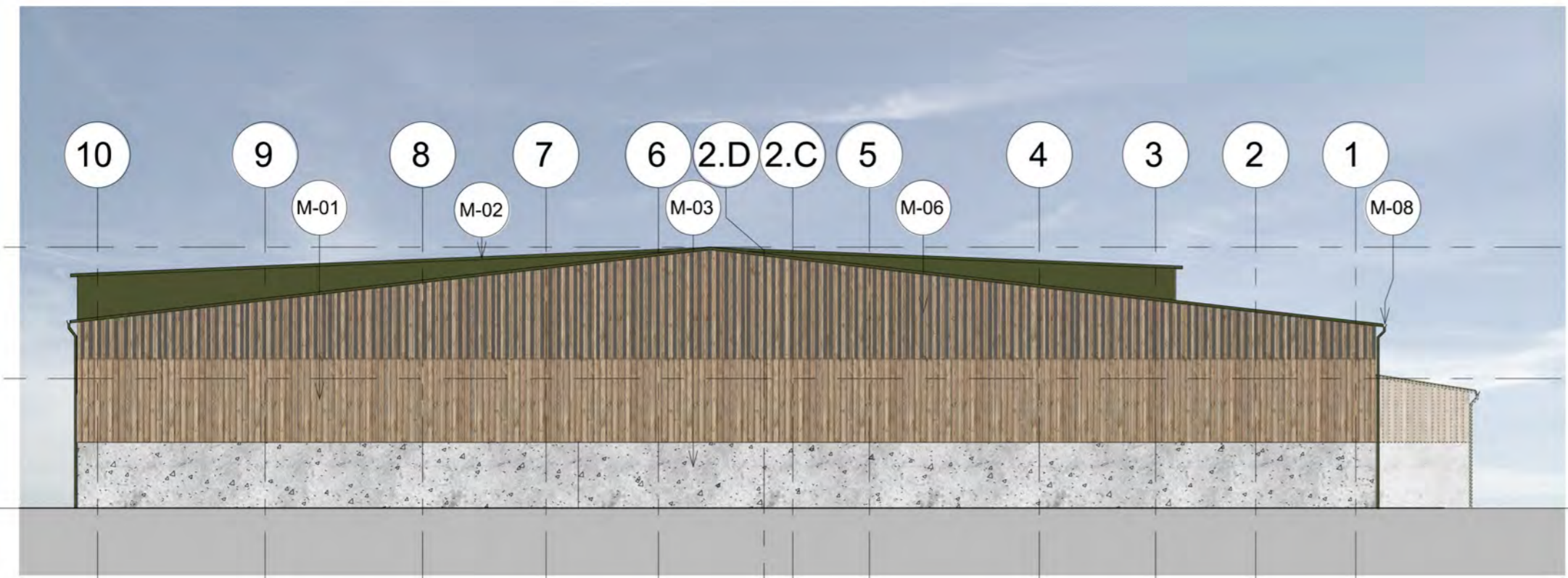
DRAWING TITLE: Service Shaft Setting Out Elevations

SCALE @ A1: As Indicated

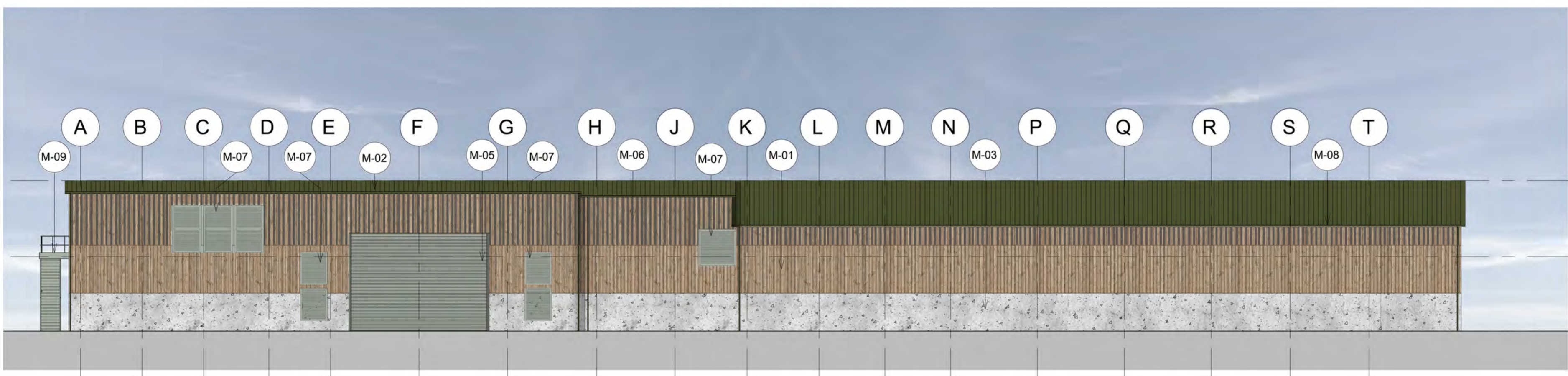
CONT No: 854-CPA-ZD-ZZ-DR-A-2171

DRG No: DMC-WS-P-0150-1200-AR-DR11-2171

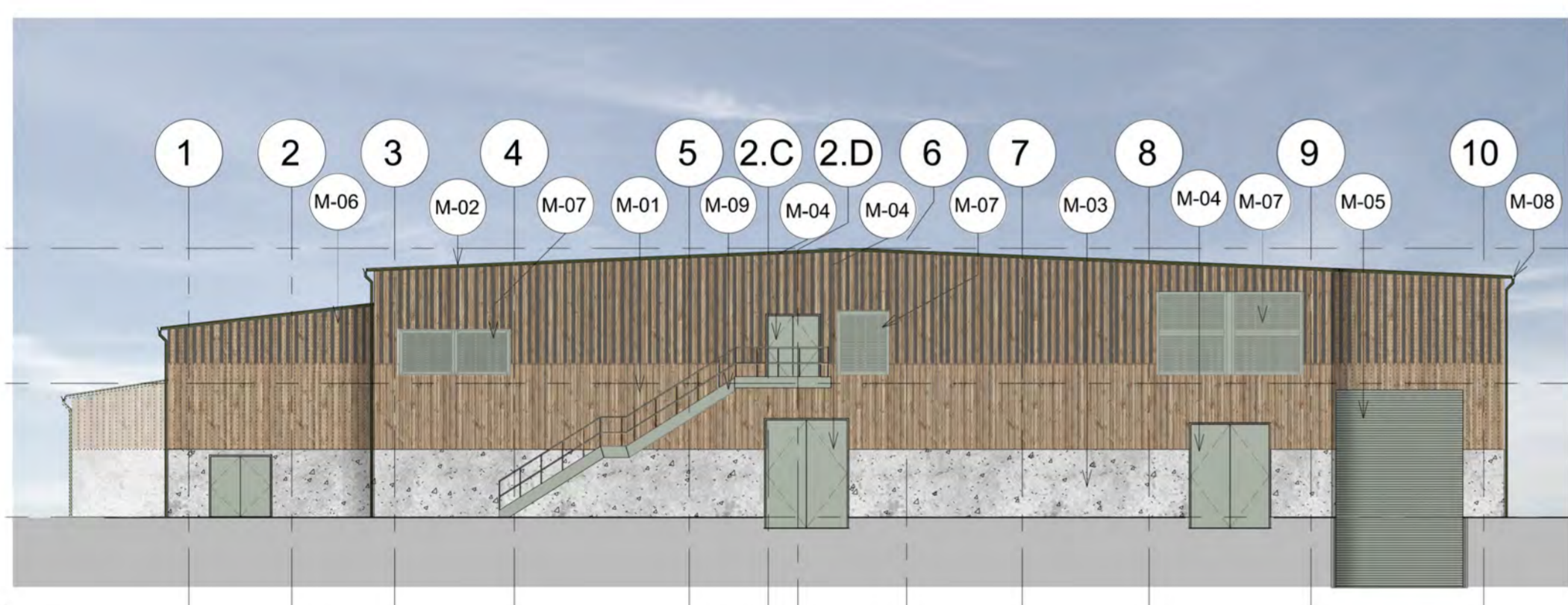
REV: N



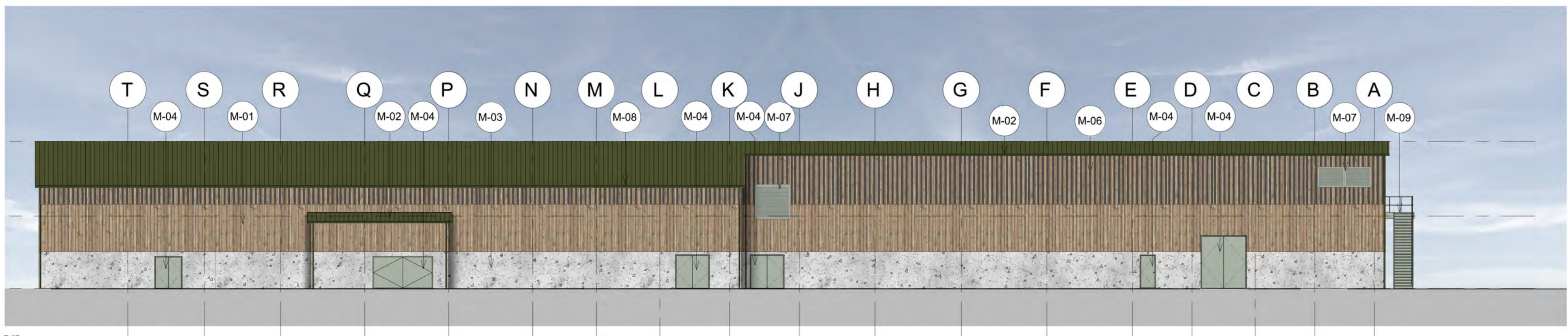
1 GA North Elevation
 1 : 200



2 GA East Elevation
 1 : 200



3 GA South Elevation
 1 : 200



4 GA West Elevation
 1 : 200

1. Reviewed - Accepted - Work May Proceed

2. Reviewed - Accepted As Noted, Work May Proceed, Revise & Resubmit

3. Reviewed - Work May Not Proceed, Revise and Resubmit

4. For information Only

By: _____
 On: _____

THIS DRAWING IS CONFIDENTIAL AND THE PROPERTY OF SIRIUS MINERALS PLC IT MUST NOT BE COPIED WITHOUT WRITTEN CONSENT