

NYMNPA

02/04/2019

From: James Cox
Sent: 02 April 2019 08:51
To: Rob Smith
Subject: RE: Woodsmith Mine - NYM/2019/0129/NM [NLP-DMS.FID262297]

Rob,

Further to your email below, please find attached final revised drawings to reflect a RAL 7016 finish on the roof.

Kind regards,

James Cox
Associate Director
Lichfields, 3rd Floor, 15 St Paul's Street, Leeds LS1 2JG

lichfields.uk

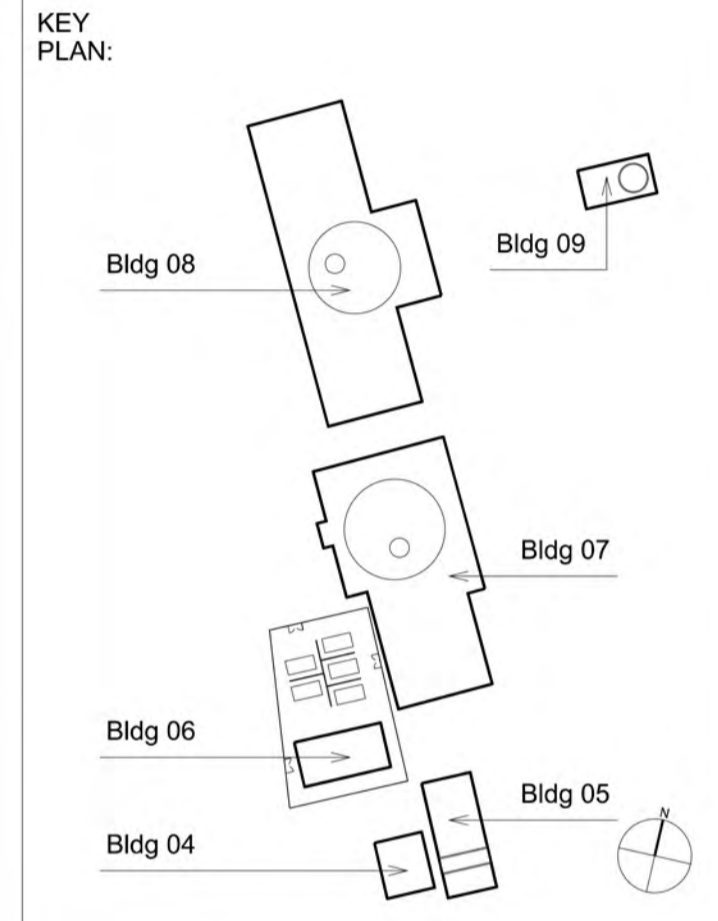
This email is for the use of the addressee. It may contain information which is confidential and exempt from disclosure. If you are not the intended recipient you must not copy, distribute or disseminate this email or attachments to anyone other than the addressee. If you receive this communication in error please advise us by telephone as soon as possible.
Nathaniel Lichfield & Partners Limited is registered in England, no. 2778116. Our registered office is at 14 Regent's Wharf, All Saints Street, London N1 9RL.

 **Think of the environment. Please avoid printing this email unnecessarily.**

Notes:
 Unless indicated, this drawing is for information only. Do not scale from this drawing for purposes other than planning application ref: Woodsmith Mine Section 73 Application June 2017. All dimensions to be checked on site.

- MATERIAL KEY**
- (M-01) Timber wall cladding (wide board & narrow gap)
 - (M-02) Concrete panel cladding
 - (M-03) PPC 'Anthracite Grey' non-reflective coated profiled sheet metal roof cladding (RAL 7016)
 - (M-04) PPC 'Agate Grey' non-reflective coated metal industrial access door (RAL 7038)
 - (M-05) PPG 'Agate Grey' non-reflective coated metal industrial roller shutter (RAL 7038)
 - (M-06) Timber wall cladding (narrow timber board & wide gap)
 - (M-07) PPC 'Anthracite Grey' non-reflective rainwater goods (RAL 7016)

• Refer to Estell Warren's information for defined site levels and max ridge heights.



Revisions:

Date:	Rev:	Note:	Check:
25.09.14	0	Planning Issue	PC
11.02.15	1	Updated in accordance with NLP's Schedule of Changes for the SEI submission.	IWA
21.08.15	2	Updated cladding material following planning review.	IWA
25.09.15	3	Updated cladding detail following planning review.	IWA
06.06.17	4	Updated for Section 73 Application June 2017, in accordance with Planning Review dated 26.05.17	IWA
22.02.19	5	Updated for planning purposes	IW
05.03.19	6	Roof RAL colour amended	IW
12.03.19	7	RAL colours updated	IW
21.03.19	8	Timber cladding updated	IW
25.03.19	9	RAL colour updated	IW
01.04.19	10	Roof RAL colour updated	IW

Copyright Cartwright Pickard Architects Ltd.
cartwright pickard architects
 Studio 4 Cross York Street Studios
 Cross York Street
 Leeds
 LS2 7BL

Project: **653 York Potash**
 Drawing Title: Mining Buildings Elevation Study - Colour
 Scale: 1 : 50 @ A1
 Drwg. Created: June 2014

Drwg. No: **653-AP-0058**
 Status: **Issue**
 (Not for Construction)
 Revision: **10**



- (M-03)
- (M-07)
- (M-01)
- Non-Reflective Metal Cill
- (M-02)

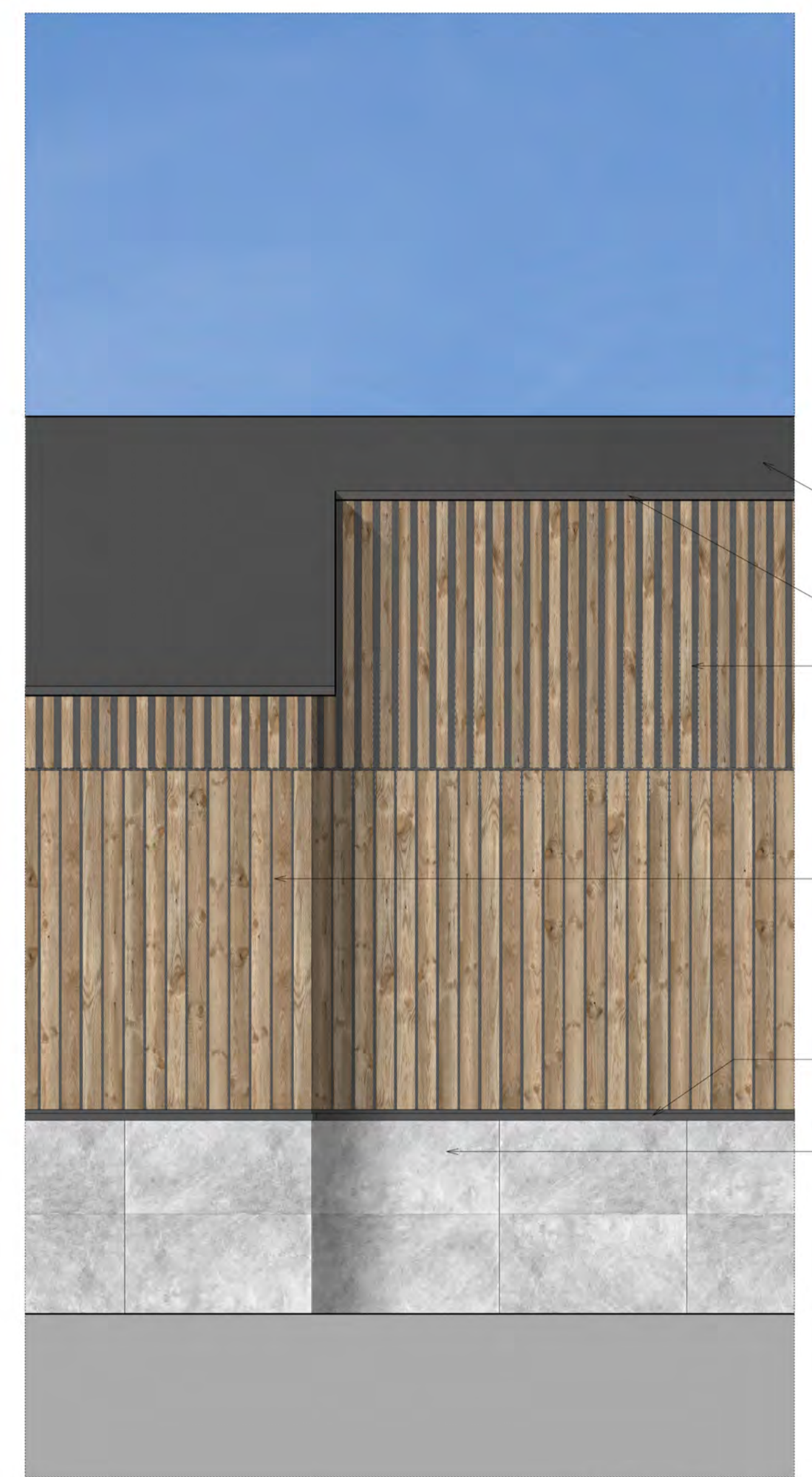
Building 04/05/06/09
 Typical Elevation
 1 : 50 @ A1

01



Building 04/05/06/09
 Typical Section
 1 : 50 @ A1

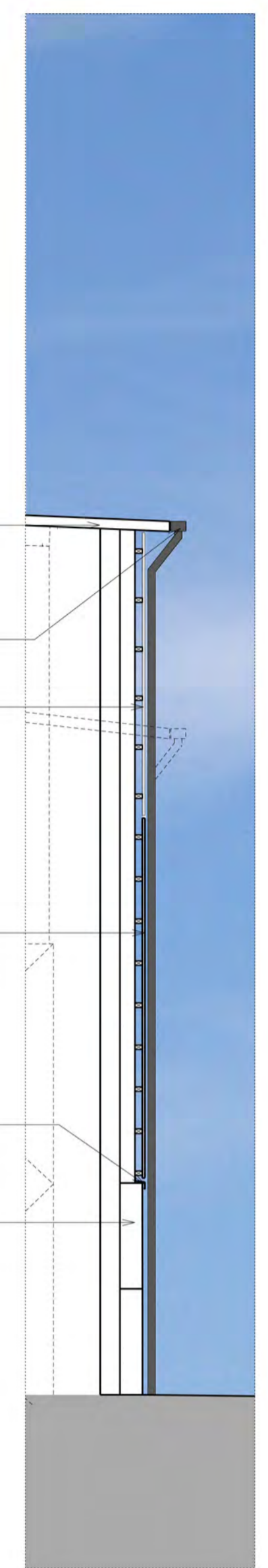
02



- (M-03)
- (M-07)
- (M-06)
- (M-01)
- Non-Reflective Metal Cill
- (M-02)

Building 07/08
 Typical Elevation
 1 : 50 @ A1

03



Building 07/08
 Typical Section
 1 : 50 @ A1

04

AMENDED

NYMNPA
 02/04/2019

Notes
 Unless indicated, this drawing is for information only and should not be used for construction. Do not scale, use figured dimensions only. All dimensions to be checked on site. This drawing should be printed and read at the original size, as stated above. Cartwright Pickard Architects accepts no responsibility for errors that occur as a result of reviewing this drawing at any other size.
 Cartwright Pickard Architects prepared this drawing using Revit 2018.3 and does not accept liability for any loss or degradation of that information held in the drawing resulting from the translation from the original file format to any other file format or from the recipient's reading of it in any other programme or an earlier version of the programme referred to above. Cartwright Pickard Architects accepts no liability for use of this drawing by parties other than the party for whom it was prepared or for purposes other than those for which it was prepared.
DWG Issues
 When this drawing is issued in DWG format it is an uncontrolled version and is provided to enable the recipient to prepare its own documents/drawings for which it is solely responsible. It is based on background information current at the time of issue.
 Cartwright Pickard Architects accepts no liability for any alterations, additions to or discrepancies arising out of changes to such background information which occur after it has been issued to Cartwright Pickard Architects.

NOTES / KEY

NOTE

The plans and/or sections and elevations shown on this drawing are based on the designs of DMC Mining UK's subcontractor (Tetra Tech) received on 19 Mar 2019, which CP relies on as being accurate and current at the time of receipt by Cartwright Pickard (CP).

CP has not checked the information and accepts no liability for it, or any alterations, additions or discrepancies arising out of changes made by DMC Mining, Tetra Tech and/or any other persons to the information after it was first issued to CP.

MATERIAL KEY

- M-01 Timber wall cladding (wide timber board & narrow gap)
- M-02 PPC 'Anthracite Grey' non-reflective coated profiled sheet metal roof cladding (RAL 7016)
- M-03 Concrete panel cladding
- M-04 PPC 'Agate Grey' non-reflective coated metal industrial access door (RAL 7038)
- M-05 PPC 'Agate Grey' non-reflective coated metal industrial roller shutter (RAL 7038)
- M-06 Timber wall cladding (narrow timber board & wide gap)
- M-07 PPC 'Agate Grey' galvanised metal ventilation panel (RAL 7038)
- M-08 PPC 'Anthracite Grey' non-reflective rainwater goods (RAL 7016)
- M-09 PPC 'Agate Grey' non-reflective metal staircase (RAL 7038)

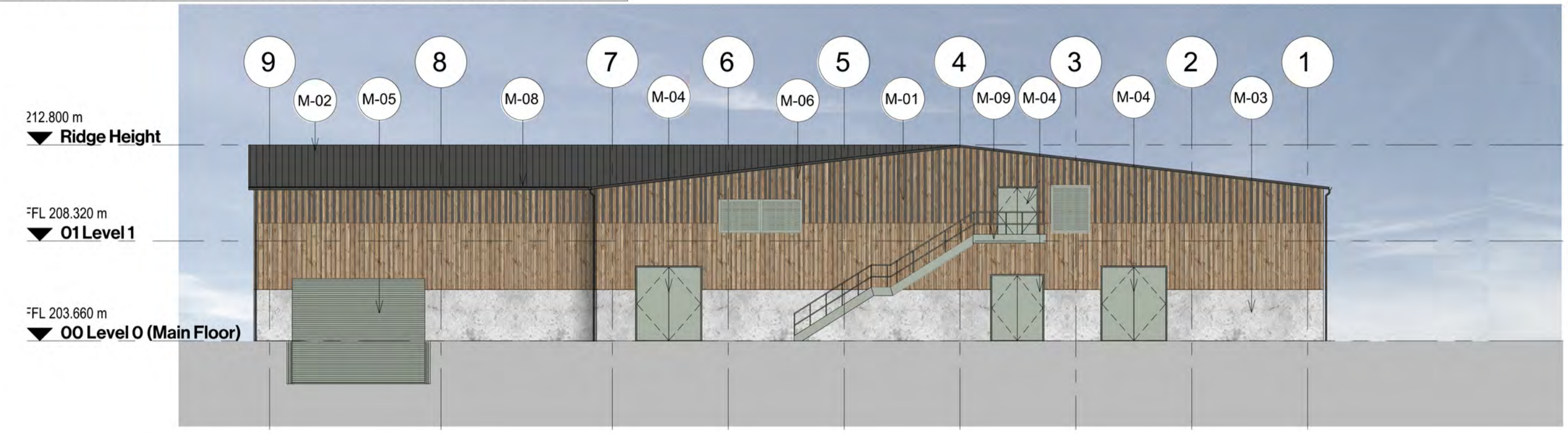
**IN PROGRESS
 SUBJECT TO SPECIALIST INPUT &
 DESIGN TEAM REVIEW**

REVISION	DESCRIPTION	DATE	BY	CHKD	APPD
J	ROOF RAL COLOUR UPDATED	01/04/19	AK	JS	IW
H	RAL COLOUR UPDATED	25/03/19	AK	JS	IW
G	TIMBER CLADDING AMENDED	20/03/19	AK	JS	IW
F	RAL COLOURS UPDATED	11/03/19	AK	JS	IW
E	RAL COLOUR AMENDED	05/03/19	AK	JS	IW
D	AMENDED FURTHER TO COMMENTS	22/02/19	AK	JS	IW
C	AMENDED FURTHER TO COMMENTS	19/02/19	AK	JS	IW
B	TIMBER CLADDING AMENDED	19/02/19	AK	JS	IW
A	UPDATED TO SHOW PITCH COMPARISON	13/02/19	AK	JS	IW

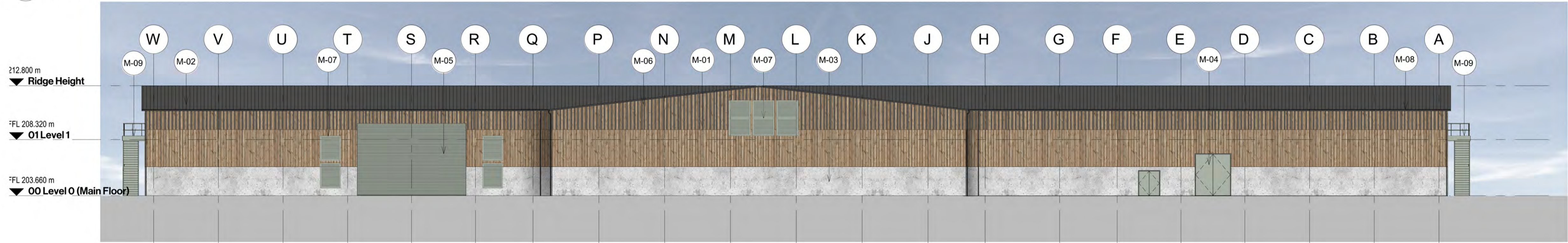


DRAWING TITLE: Production Shaft Setting Out Elevations

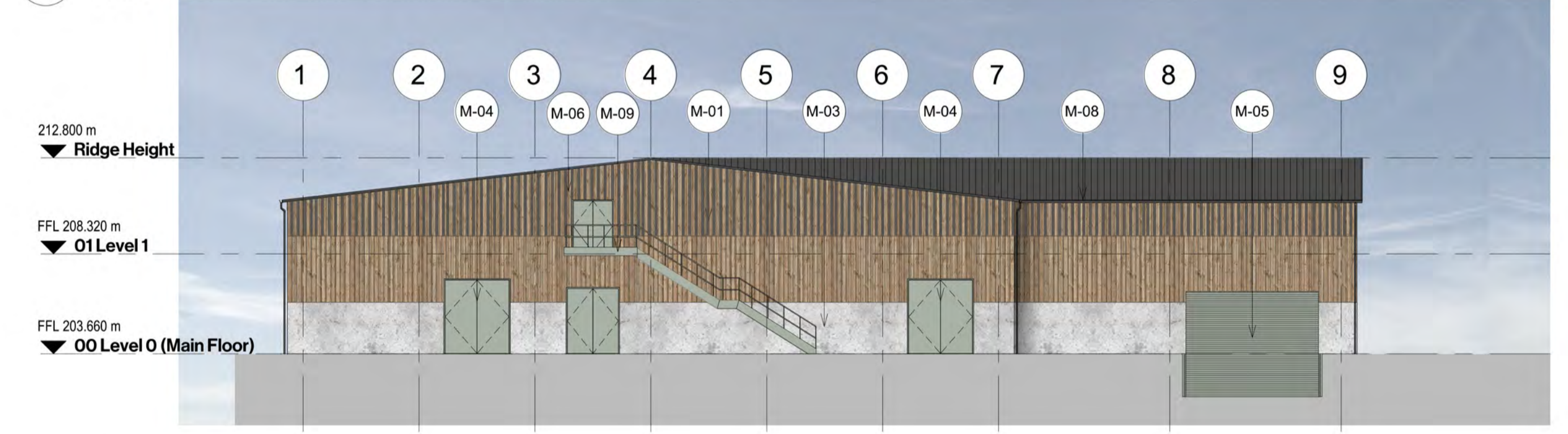
SCALE @ A1: As indicated
 CONT No: 854-CPA-ZC-ZZ-DR-A-2170
 DRG No: DMC-WS-P-0150-1100-AR-DR11-2170
 REV: J



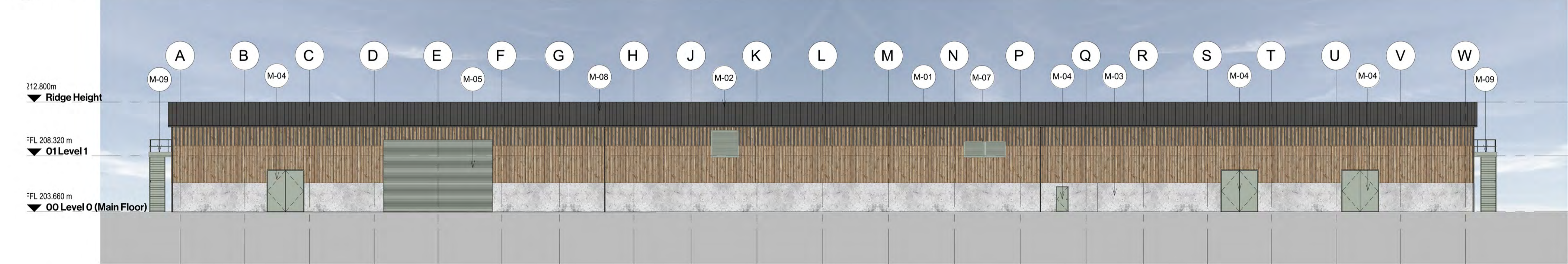
1 GA North Elevation
 1 : 200



2 GA East Elevation
 1 : 200



3 GA South Elevation
 1 : 200



4 GA West Elevation
 1 : 200

<input type="checkbox"/> 1. Reviewed - Accepted - Work May Proceed	By:
<input type="checkbox"/> 2. Reviewed - Accepted As Noted, Work May Proceed, Revise & Resubmit	On:
<input type="checkbox"/> 3. Reviewed - Work May Not Proceed, Revise and Resubmit	
<input type="checkbox"/> 4. For information Only	

AMENDED

NYMNPA
 02/04/2019

Notes
 Unless indicated, this drawing is for information only and should not be used for construction. Do not scale, use figured dimensions only. All dimensions to be checked on site. This drawing should be printed and read at the original size, as stated above. Cartwright Pickard Architects accepts no responsibility for errors that occur as a result of reviewing this drawing at any other size.
 Cartwright Pickard Architects prepared this drawing using Revit 2018.3 and does not accept liability for any loss or degradation of that information held in the drawing resulting from the translation from the original file format to any other file format, or from the recipient's reading of it in any other programme or an earlier version of the programme referred to above. Cartwright Pickard Architects accepts no liability for use of this drawing by parties other than the party for whom it was prepared or for purposes other than those for which it was prepared.
DWG Issues
 When this drawing is issued in DWG format it is an uncontrolled version and is provided to enable the recipient to prepare its own documents/drawings for which it is solely responsible. It is based on background information current at the time of issue.
 Cartwright Pickard Architects accepts no liability for any alterations to, additions to or discrepancies arising out of changes to such background information which occur after it has been issued by Cartwright Pickard Architects.

NOTES / KEY
NOTE
 The plans and/or sections and elevations shown on this drawing are based on the designs of DMC Mining UK's subcontractor (Tetra Tech) received on 19 Mar 2019, which CP relies on as being accurate and current at the time of receipt by Cartwright Pickard (CP).
 CP has not checked the information and accepts no liability for it, or any alterations, additions or discrepancies arising out of changes made by DMC Mining, Tetra Tech and/or any other persons to the information after it was first issued to CP.

- MATERIAL KEY**
- M-01 Timber wall cladding (wide timber board & narrow gap)
 - M-02 PPC 'Anthracite Grey' non-reflective coated profiled sheet metal roof cladding (RAL 7016)
 - M-03 Concrete panel cladding
 - M-04 PPC 'Agate Grey' non-reflective coated metal industrial access door (RAL 7038)
 - M-05 PPC 'Agate Grey' non-reflective coated metal industrial roller shutter (RAL 7038)
 - M-06 Timber wall cladding (narrow timber board & wide gap)
 - M-07 PPC 'Agate Grey' galvanised metal ventilation panel (RAL 7038)
 - M-08 PPC 'Anthracite Grey' non-reflective rainwater goods (RAL 7016)
 - M-09 PPC 'Agate Grey' non-reflective metal staircase (RAL 7038)

IN PROGRESS
 SUBJECT TO SPECIALIST INPUT &
 DESIGN TEAM REVIEW

REVISION	DESCRIPTION	DATE	BY	CHKD	APPD
P	ROOF RAL COLOUR UPDATED	04/01/19	AK	JS	IW
N	RAL COLOUR UPDATED	25/03/19	AK	JS	IW
M	CLADDING INTERSECTION LOCATION UPDATED	15/03/19	AK	JS	IW
L	RAL COLOURS UPDATED	11/03/19	AK	JS	IW
K	RAL COLOUR AMENDED	05/03/19	AK	JS	IW
J	UPDATED FURTHER TO COMMENTS	20/02/19	AK	JS	IW
H	UPDATED FURTHER TO COMMENTS	20/02/19	AK	JS	IW
G	UPDATED FURTHER TO COMMENTS	19/02/19	AK	JS	IW
F	UPDATED FURTHER TO COMMENTS	18/02/19	AK	JS	IW



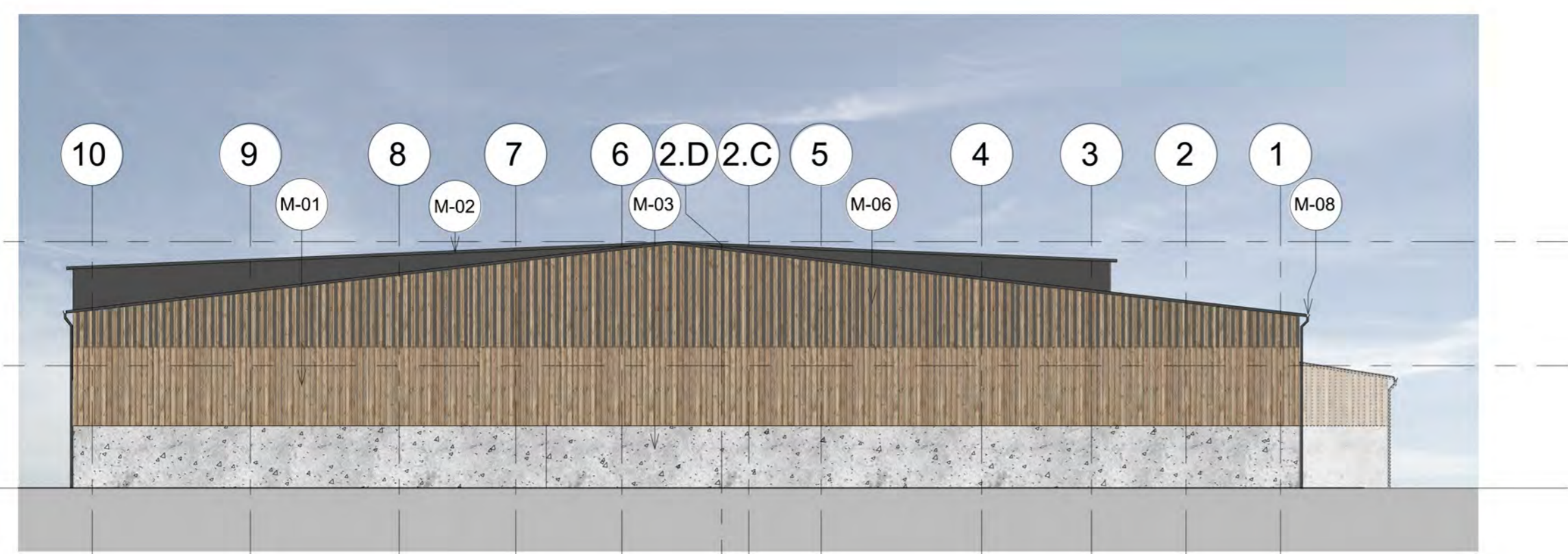
DRAWING TITLE: Service Shaft Setting Out Elevations

SCALE @ A1: As Indicated

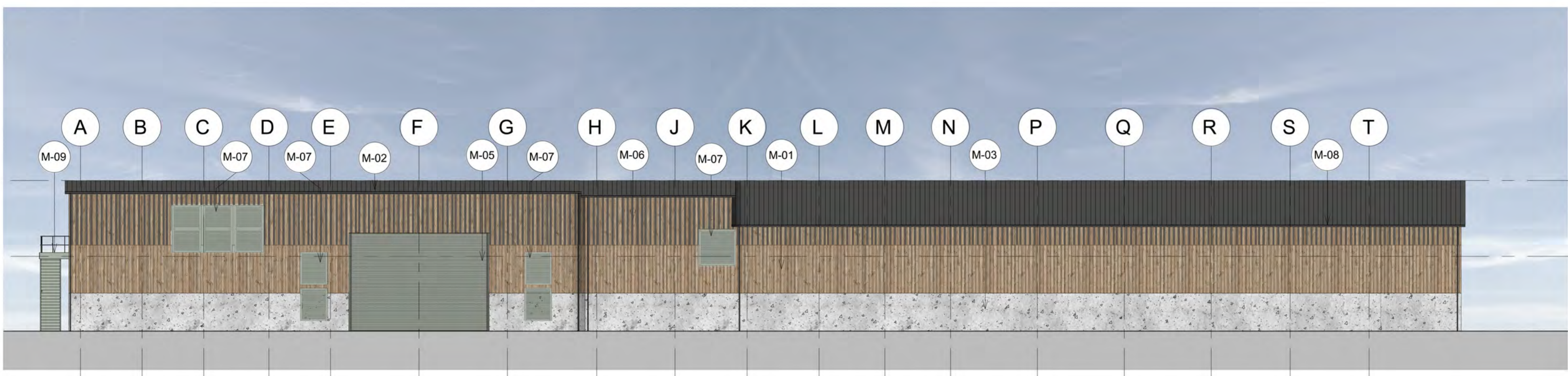
CONT No: 854-CPA-ZD-ZZ-DR-A-2171

DRG No: DMC-WS-P-0150-1200-AR-DR11-2171

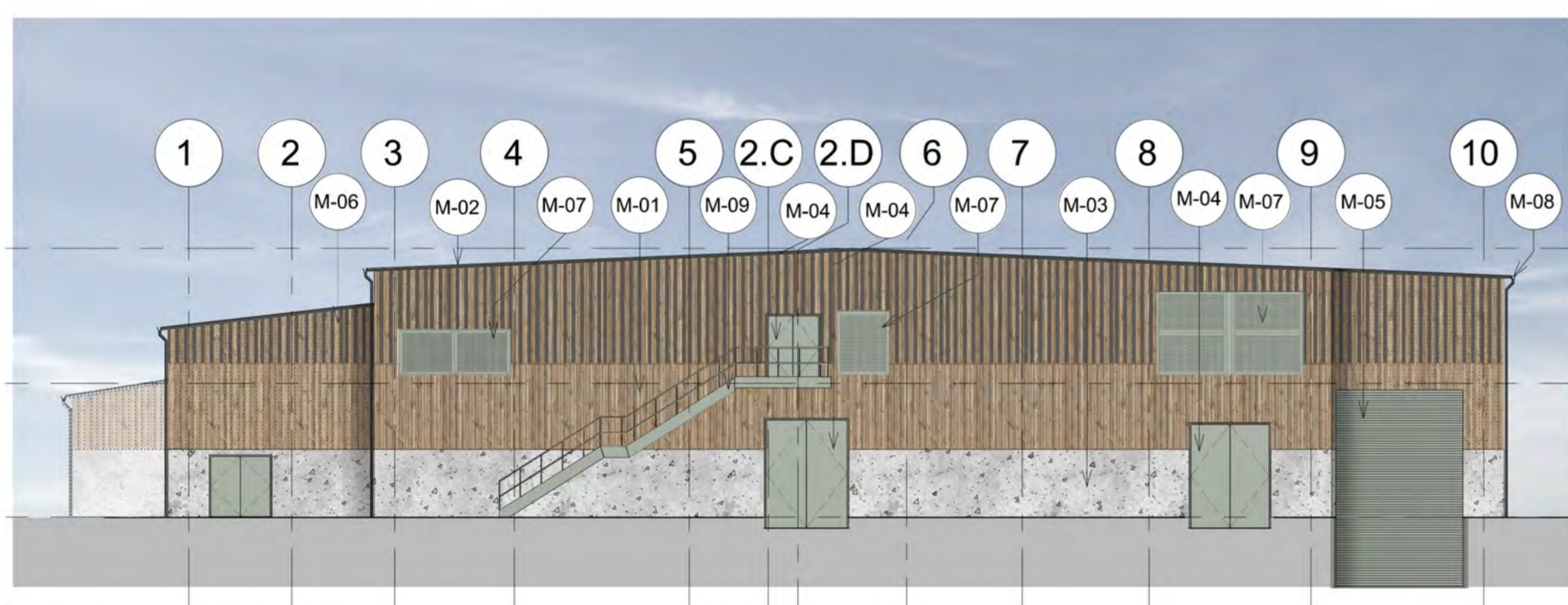
REV P



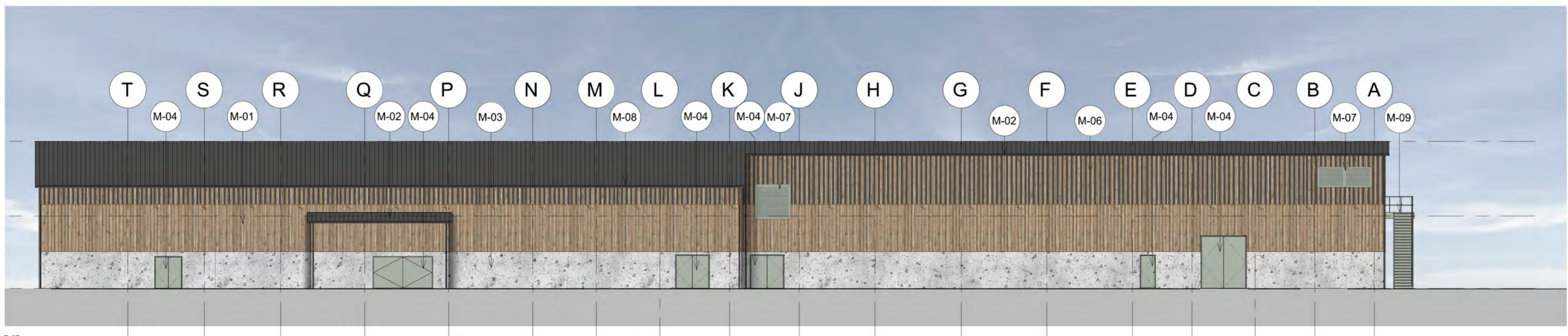
1 GA North Elevation
 1 : 200



2 GA East Elevation
 1 : 200



3 GA South Elevation
 1 : 200



4 GA West Elevation
 1 : 200

<input type="checkbox"/> 1. Reviewed - Accepted - Work May Proceed	By:
<input type="checkbox"/> 2. Reviewed - Accepted As Noted, Work May Proceed, Revise & Resubmit	On:
<input type="checkbox"/> 3. Reviewed - Work May Not Proceed, Revise and Resubmit	
<input type="checkbox"/> 4. For information Only	

THIS DRAWING IS CONFIDENTIAL AND THE PROPERTY OF SIRIUS MINERALS PLC IT MUST NOT BE COPIED WITHOUT WRITTEN CONSENT

AMENDED

NYMNP
 02/04/2019