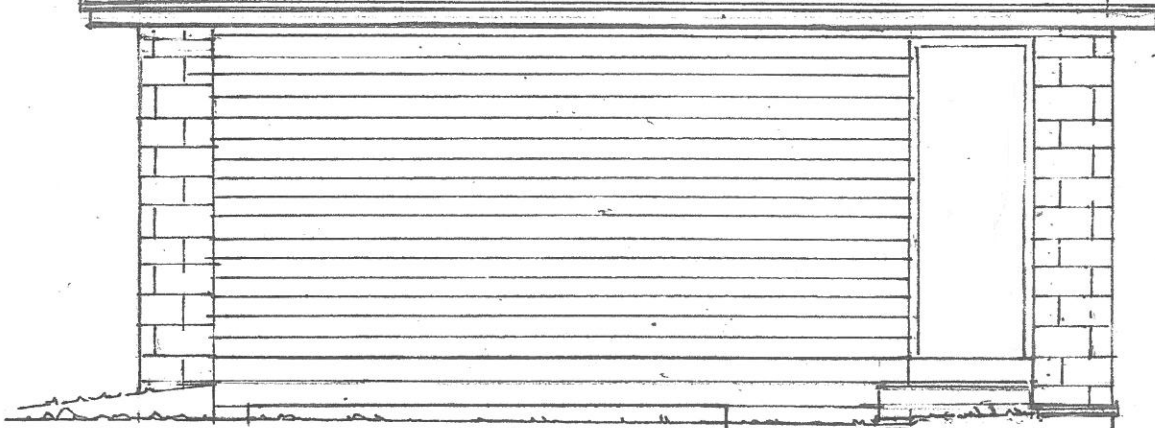


**HEMPSYKE COTTAGE, LITTLEBECK LANE, YO22 5HY
MODIFICATIONS TO GARAGE AS BUILT MAY 2019**

Comprising

- Roof structure lowered by 200mm
- 300mm Roof overhangs added at gables and eaves
- Corner boarding cut back and replaced with stone
- New window to North elevation to match south side

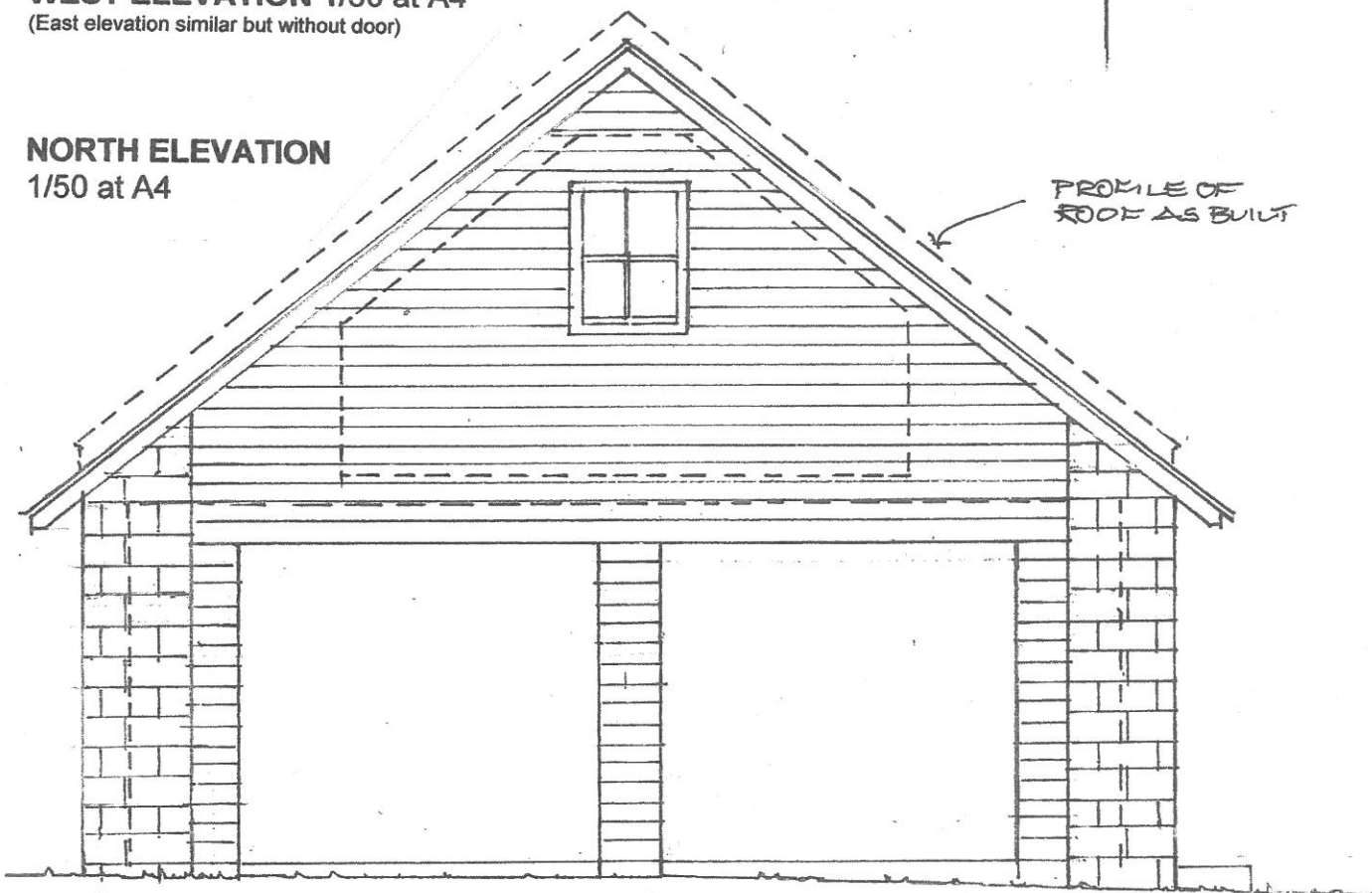
← OUTLINE
OF ROOF
AS BUILT



WEST ELEVATION 1/50 at A4
(East elevation similar but without door)

← RETAINING
WALL

**NORTH ELEVATION
1/50 at A4**



← PROFILE OF
ROOF AS BUILT

NYMNP

24/05/2019

**HEMPSYKE COTTAGE, LITTLEBECK LANE, YO22 5HY
MODIFICATIONS TO GARAGE AS BUILT MAY 2019**

Comprising

- Roof structure lowered by 200mm
- 300mm Roof overhangs added at gables and eaves
- Corner boarding cut back and replaced with stone
- New window to North elevation to match south side

SOUTH ELEVATION
1/50 at A4

