

Item 1
NYM/2018/0791/FL

SPAUNTON QUARRY

Reception Building Concept

Prepared for George Winn-Darley
Aldby Park,
Yorks.

All concept designs are for illustration purposes only, and do not represent resolved designs. Do not scale, construct or use for any detailed elements. Please ask for consent in writing from Digg & Co. Studio. for the use of these drawings in any part of the ongoing design process. A full structural survey and building survey should be undertaken before any detailed design work is undertaken.

CONTENTS

The Vision

The Site

Materiality

Concept 1

Concept 2

Concept 3

Final Conclusions

Appendix - Notes from NYMNP Design Guide

THE VISION

Spaunton Quarry has, since the late 1800s, been the site of a large limestone extraction operation. In the early 2000s, this operation came to an end, and it has since been part of a natural restoration project put into place by the tenant, Cemex.

Since then it has become a highly biodiverse area with recreational users walking the many footpaths which cross the site.

Subsequently, the owner has put forward a cabin, caravan and camping operation as a way of sensitively using this asset with close ties to the North York Moors National Park (NYMNP). This quarry offers a good location for low impact recreational facilities, such as walking and cycling, due to any proposed development being within the quarry, and therefore not impacting on the National Park's overall landscape character.

Another aim of the proposed development is to strengthen links to the wider Park, by both redrawing the commons boundaries, and allowing people to enjoy the many (currently disused) tracks and paths within the quarry. This space and tranquility, and the links to the wider landscape, reinforces the policy of strengthening and diversifying the rural economy and providing tourism based opportunities for the understanding and enjoyment of the Park's special qualities (Core Policy A (7), among others.

With this proposed change of use, some interest has been shown for the removal of some of the existing quarry buildings due to their 'ugliness'. In the spirit of the age, where sustainability, and a clever use of resources are more pertinent than ever, it seems sensible to re-imagine these as buildings which progress and enhance the architectural character and vernacular of the National Park.

This local style is to be echoed, with the potential use of limestone, pantiles, and brick, however, these are re-purposed to tell the story of the natural collaborating with the industrial. Raw weathered steel, black cladding and high quality detailing bring the design into line with the aspirations of the North York Moors National Park Authority (NYMNPA), by offering a building which, with a mixture of tradition and innovation will allow this generation to leave a positive mark on the landscape of the National Park.

Use as part of construction?



Building in question.
The Weighbridge office



Decaying quarry items
suggest potential detailing
elements



Limestone rubble wall offers inspiration

THE SITE

GRID REF:
SE 72020 86388

BUILDING OF INTEREST



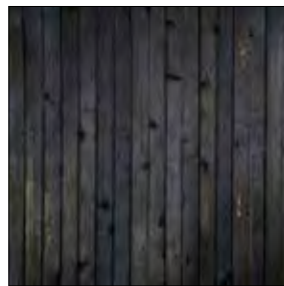
MATERIALITY

The pioneering natural world, pegged against the extractive man made landscape, creates an interesting juxtaposition and this is reflected in the materiality choices for the reception building.

In keeping with the policies of the NYMNP, the use of organic materials, such as local wood and local stone, can be designed to contrast with the more tangible human elements of tiles and steel, both of which are evident both within the quarry and the local proximity.

In the case of the concepts, they are all focussed on telling the story of local place meeting modern vernacular architecture in order to promote a high standard of design detailing.

CONCEPT 1



CHARRED LARCH (or similar)



LIMESTONE DRYSTONE EFFECT



CORTEN FLASHINGS

CONCEPT 2



UNTREATED LARCH

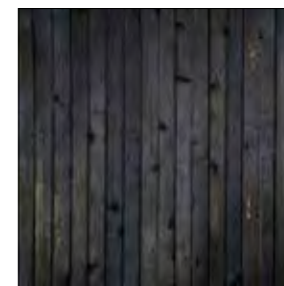


COURSED LIMESTONE



BRICK PARAPET GABLE

CONCEPT 3



CHARRED LARCH



BOULDER COURSE
LIMESTONE



ZINC FLASHING

PRECEDENTS



Contemporary cabins set in natural landscapes.
Local vernacular with modern detailing

CONCEPT 1

View from Leaving the Quarry

Front and Back Elevations : Charred Larch

Gables : Dry Coursed Limestone

Parapet Gable: Corten Flashing

Roof : 45 Deg with Charred Larch



Contemporary vertical cladding meets industrial steel details and limestone gables.



Digg & Co. Studio
7002 · Spanton Quarry
Reception Building Concept
View from Quarry Entrance
13.05.19

CONCEPT 2

View from Leaving the Quarry

Front and Back Elevations : Untreated Larch

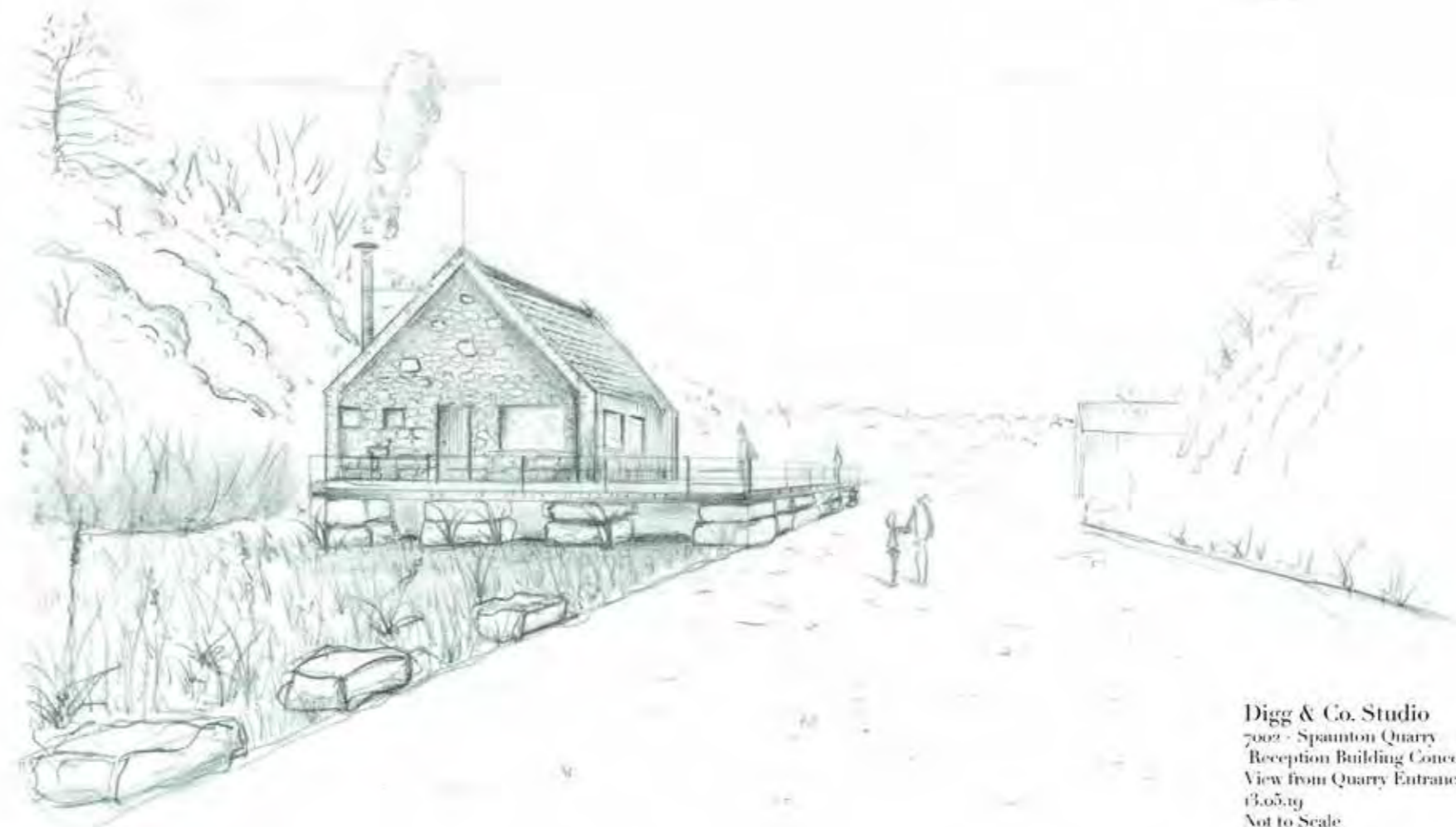
Gables : Diminishing Dry Coursed Limestone

Parapet Gable: Traditional Brick

Roof : 45 Deg with Pantiles



Traditional vernacular of pantiles and limestone detailed with contemporary simplicity. A rugged approach with local ties.



Digg & Co. Studio
7002 - Spaanton Quarry
Reception Building Concept 2
View from Quarry Entrance
03.05.19
Not to Scale

CONCEPT 3

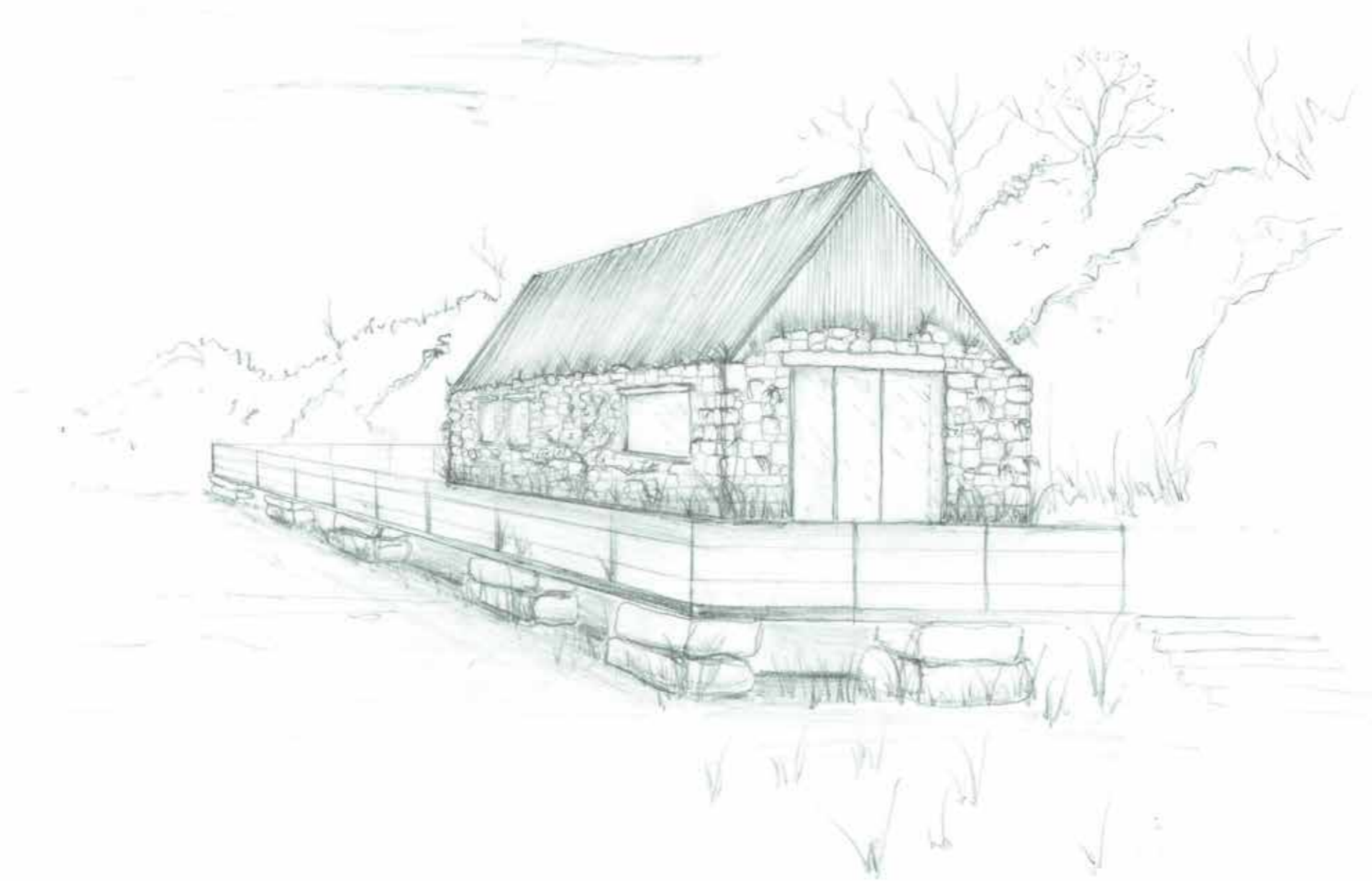
View from Entering the Quarry

Front and Back Elevations : Boulder Course Limestone

Gables : Boulder Course Limestone

Flashing : Zinc

Roof : 45 Deg with Charred Timber (Larch)



A rugged limestone aesthetic with contemporary wood roof emerging from quarried stone walls.



Digg & Co. Studio
7002 - Spanton Quarry
Reception Building Concept 3
View from Quarry Entrance
14.05.19
Not to Scale

CONCLUSIONS

With considered detailing, a mix of modern and vernacular styles, and the re-use of an old building as the blueprint, the architectural merit of the quarry can be updated to one in line with NYMNPA policies and future generations.

The use of sustainable materials and construction techniques offers a robust approach to future design within the park, during a time where our wild spaces, and the architecture within them, will be a beacon of how we develop sensitively in the face of diminishing biodiversity.

To create something which embodies the essence of wildness, through the pioneering landscape of the rewilding quarry, will be a chance to show how man and nature can live, visit and enjoy the wild spaces of Great Britain in harmony.

Appendix 1

NOTES FROM NYMNP - Design Guide

Extracts which guided the vision.

A high standard of design detailing is used whether traditional or contemporary, which reflects or complements that of the local vernacular.

Good quality sustainable design and construction techniques are incorporated in the development including measures to minimise energy use and where possible use energy from renewable sources.

A satisfactory landscaping scheme forms an integral part of the proposal

Ensuring that all new development is of a high quality that respects local distinctiveness and conserves and where possible, enhances the character and special qualities of the area.

iii. Encouraging good contemporary design where appropriate

Minimising the requirement for resource use during the operation of the development.

vi. Ensuring that conditions for wildlife and natural habitats are maintained or enhanced.

Contemporary design and interpretation is welcomed in the context of this historical perspective and designers are encouraged to read this information, take a look at their design context and offer something new. A mixture of tradition and innovation will allow our generation to leave a positive mark on the landscape of the National Park.

roof pitches are typically between 30° and 45° but detailing should relate to the material used. The choice of material will be dependent on the character of the area;

Re-using existing buildings

- Existing buildings and previously used land should be re-used (in the context of current planning policies) or incorporated into the scheme where possible.
- Re-use existing materials from the site wherever possible.
- Where the materials from existing buildings cannot be re-used they should be disposed of to a recognised salvage operator.
- Buildings should be flexible and adaptable for future alternative uses.

© Digg & Co. Studio | Ecological Design
2019

‘Design, networked to the biosphere’

Digg & Co. Studio | Ecological Design