

NYMNPA

12/07/2019

**From:** Andy Rollinson  
**Sent:** 12 July 2019 12:33  
**To:** Maria Calderon  
**Cc:** Hilary Saunders; Office  
**Subject:** FW: Emailing: inset timbers Thirley Cotes Farm.

& again.

Andy

Rollinson Planning Consultancy Ltd

80 Main Street Menston Ilkley West Yorkshire LS29 6HS

Registered company number 6856004

-----Original Message-----

**From:** Office  
**Sent:** 12 July 2019 11:41  
**To:** Andy Rollinson  
**Cc:** Peter Durbin mark  
**Subject:** Emailing: inset timbers Thirley Cotes Farm.

Hi Andy

I now attach survey and proposals for inset timbers and I would advise as follows - Print at A3.

Some timbers are probably covered with historic render so I have had to make some obvious assumptions

It seems that the lower level timbers were probably put in to provide fixings for divisions within

the barn Which was probably a simple flexible open space - so the cross walls are probably not original.

I have indicated where we can expose timbers and given a little detail on how they will be exposed.

You will see on the photographs I have highlighted the timbers.

I have made a general note about using reclaimed timbers to openings in the masonry to replicate lintels.

In effect these will be a facing.

I hope that this will now sort out the relevant condition.

I will get the external light details to you today - I think that this is just as the latest drawing.

I will follow up with the Building Inspector concerning the toilet vents!

Concerning the trusses I had arranged to return to site to photograph the Contractors proposals for which Timbers were to be new and which old. The Contractor has however proceeded to build all the trusses Using reclaimed timber wherever possible. The new timbers Maria has already seen and these are a matching Redwood. Maria has already seen the truss that has been rebuilt and was anxious that historic timbers should Be used wherever possible. Marks intention is to use as much historic timber as possible in the 2 trusses that Are fully exposed in Bedroom 1 and the Reception room - the other two are in shower rooms. Hopefully these Trusses will be finished on Monday - I will photograph and provide a measured drawing of the actual construction.

Regards David.

Your message is ready to be sent with the following file or link attachments:

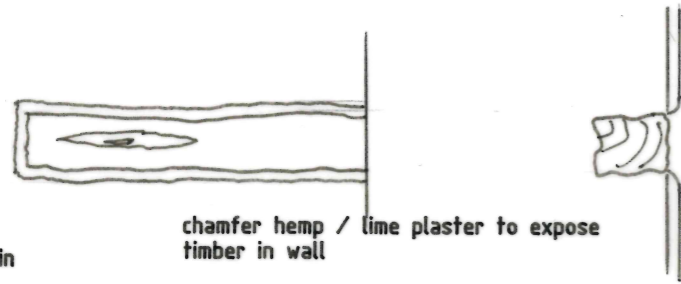
inset timbers

Note: To protect against computer viruses, email programs may prevent you from sending or receiving certain types of file attachments. Check your email security settings to determine how attachments are handled.

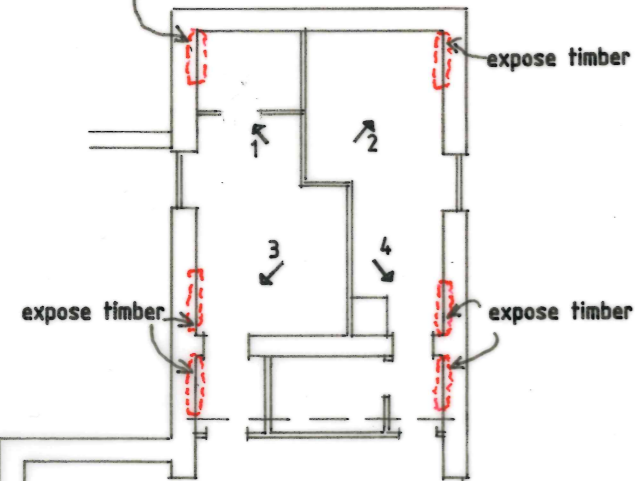
NYMNPA

12/07/2019

### Typical Elevation / Section



plaster over timber in shower room



MULBERRY COTTAGE

note - fit reclaimed timbers to internal openings in stone walls

note - some timber position are assumed where currently plastered over

### Location Plan

leave timber sills exposed to windows

WALNUT COTTAGE

plaster over high level timbers

plaster over high level timbers



1



2



3



4



5



6



7



8



9



10



11

Survey / Proposals for Inset Timbers  
Mulberry & Walnut Cottages  
Thirley Cotes Farm

10/7/19.