



104\_Gen\_view -NF elev of N range central



105\_Gen\_view -NF elev of N range central



106\_Gen\_view -NF elev of N range W end



107\_Gen\_view -NF elev of N range oblique lk SE



108\_Gen\_view -NF elev of N range ext



109\_Gen\_view -NF elev of N range and Ext Ik SE



110\_Gen\_view -WF elev of N range Ext



111\_Gen\_view -SF elev of N range Ext



112\_Gen\_view -WF elev of\_house



113\_Gen\_view of\_house oblique lk NW - East gable



114\_Gen\_view -SF - front- elev of\_house



115\_Gen\_view of\_house oblique lk NE



*116\_Gen\_view\_of\_approach from the south*



*117\_100-roof detail\_carpenters marks IV- 100*



118\_200\_roof detail\_carpenters marks III 200 and purlons



119-200\_roof detail\_carpenters marks III 200 both tiusses and 204





120\_200\_roof detail\_carpenters marks III 200 lk NE



121\_200\_roof detail\_carpenters marks III 200



122\_300\_roof detail\_carpenters marks II 300



123\_roof detail\_carpenters marks I 400



124\_600\_610\_n\_elev



125\_200\_201\_lk\_w



126\_200\_203\_1k\_E



127\_200\_se\_corner



*128\_200\_ne\_corner*



*129\_200\_108\_k\_n*



130\_200\_1k\_nw



131\_200\_nw\_corner



132\_200\_201\_west\_elev



133\_100\_104\_k\_e



134\_100\_103\_lk\_sw



135\_100\_lk\_se





136\_100\_1k\_se



137\_100\_111\_1k\_ne



138\_100\_111\_ik\_mv



139\_100\_ik\_sv



140\_100\_1k\_sw



141\_2700\_2701\_1k\_s



142\_2000\_2300\_north\_elev\_lk\_se



143\_2000\_2300\_lk\_s



144\_2000\_lk\_sw



145\_gen\_view\_west\_range\_lk\_w



146\_gen\_view\_farmhouse\_lk\_s



147\_gen\_farmhouse\_lk\_se



*148\_gen\_view\_courtyard\_lk\_ne*



*149\_gen\_view\_farmhouse\_e\_range\_lk\_se*



*150\_gen\_view\_barn\_s\_elev\_lk\_n*



*151\_gen\_view\_courtyard\_lk\_sw*





*152\_gen\_view\_s\_range\_farmhouse\_lk\_ne*



*153\_1000\_1200\_lk\_n*



*154\_gen\_view\_s\_range\_lk\_mv*



*155\_gen\_view\_farmhouse\_lk\_e*



*156\_gen\_view\_farmhouse\_s\_elev\_lk\_n*



*157\_gen\_view\_farmhouse\_lk\_w*



*158\_gen\_view\_east\_range\_e\_elev\_lk\_nw*



*159\_3000\_3200\_n\_elev\_lk\_se*



*160\_gen\_view\_east\_range\_lk\_sw*



*161\_gen\_view\_barn\_w\_elev\_lk\_sw*



*162\_gen\_view\_barn\_ext\_lk\_se*



*163\_gen\_view\_barn\_ext\_lk\_n*



*164\_gen\_view\_west\_range\_lk\_ne*



*165\_1000\_1300\_w\_elev\_lk\_e*



166\_1300\_101\_Jk\_s



167\_1300\_101\_Jk\_e





168\_1300\_301\_1k\_e



169\_1300\_600\_1k\_ne



170\_600\_602\_lk\_se



171\_2200\_2204\_w\_elev\_lk\_nw



172\_2200\_n\_elev\_lk\_n



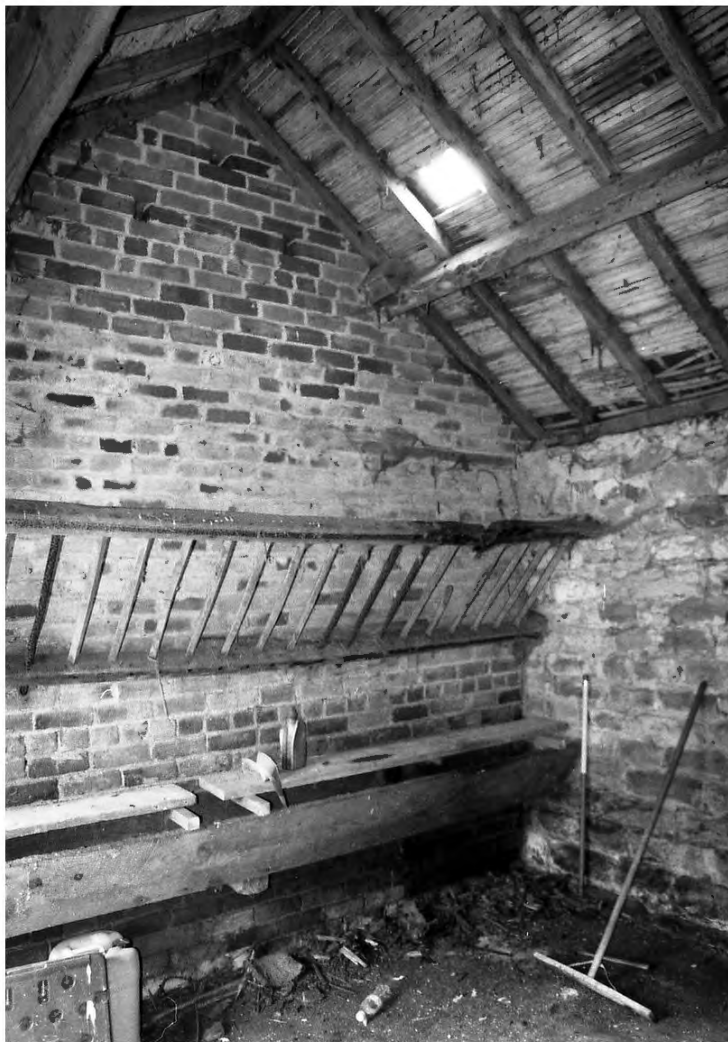
173\_2200\_lk\_sw



174\_2100\_2106\_e\_elev\_lk\_e



175\_2100\_2101\_lk\_n



176\_2100\_sw\_corner\_lk\_sw



177\_500\_506\_s\_elev



178\_500\_1k\_se



179\_500\_1k\_nw



180\_400\_404\_1k\_s



181\_400\_405\_1k\_s



182\_400\_1k\_vv



183\_300\_108\_1k\_se





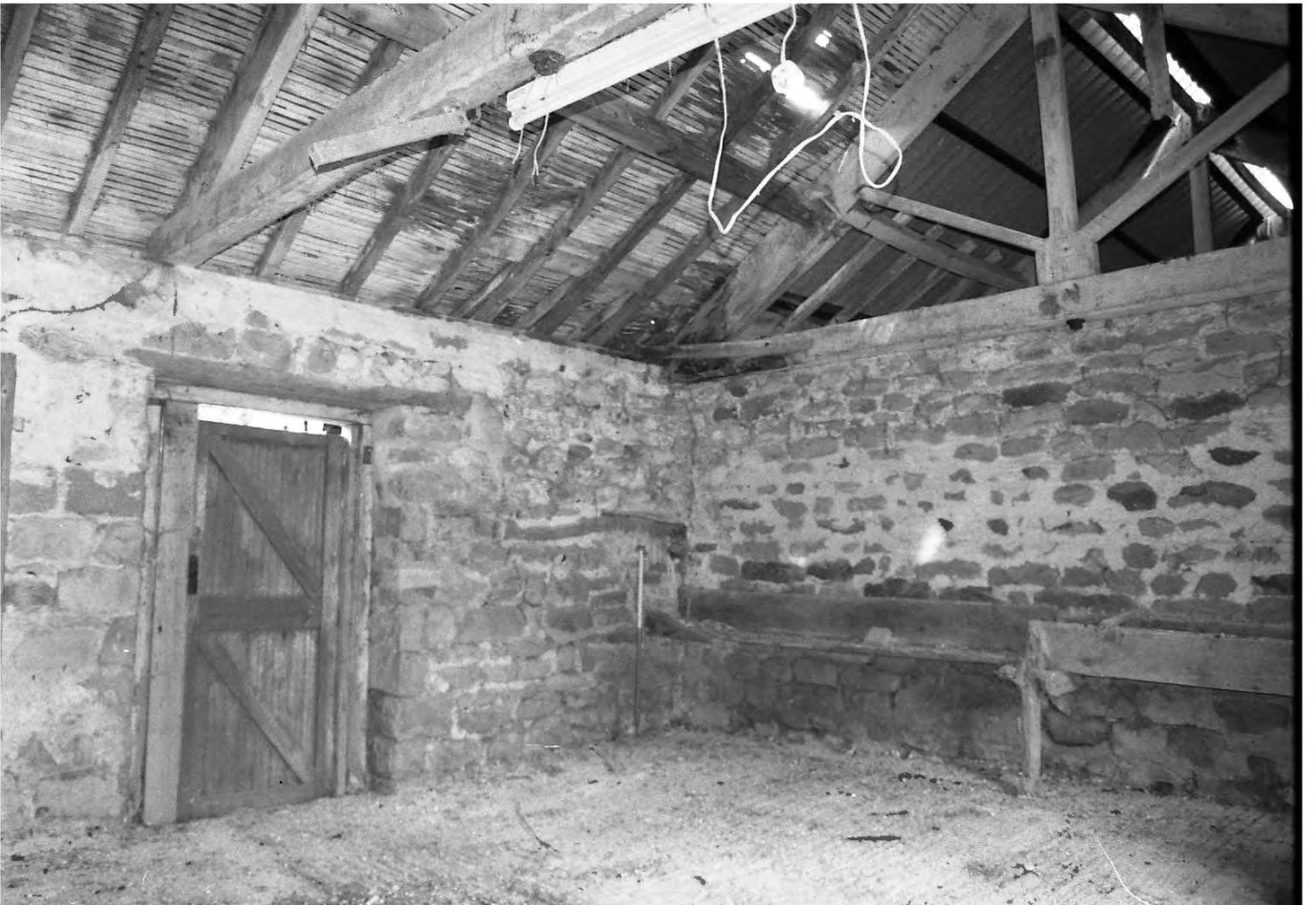
184\_300\_lk\_sv



185\_300\_lk\_se



186\_300\_lk\_ne



187\_300\_lk\_nw



*188\_gen\_view\_barn\_n\_elev\_1k\_s*



*189\_gen\_view\_barn\_n\_elev\_1k\_s*



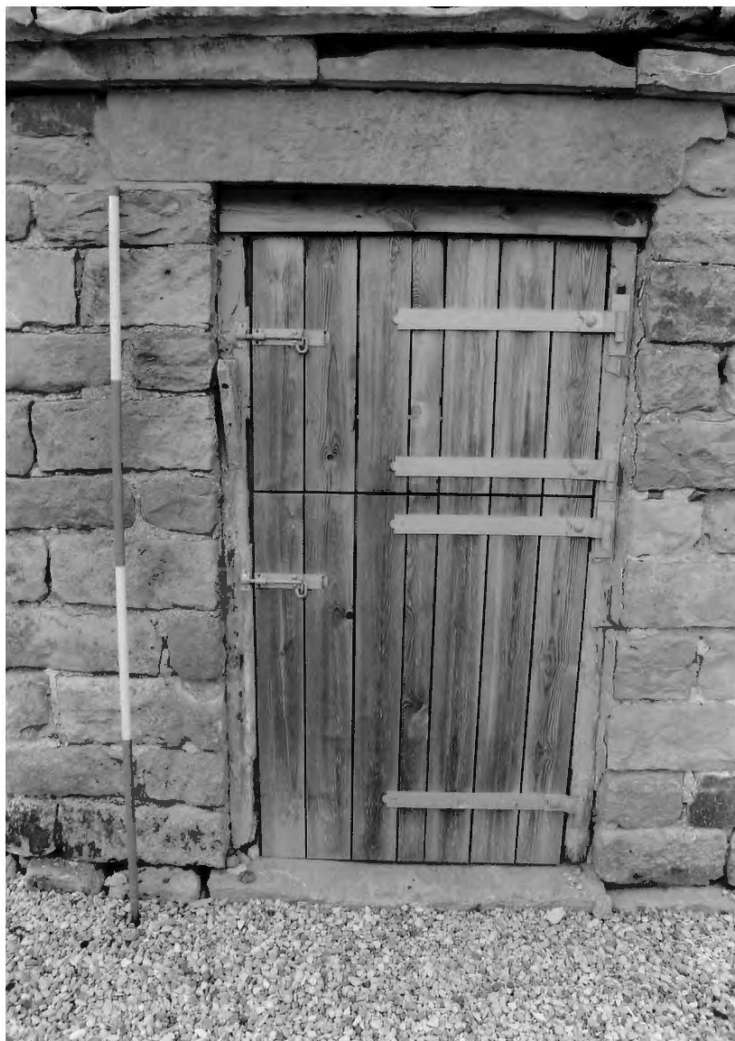
190\_3000\_gen\_view\_lk\_sw



191\_gen\_view\_east\_range\_lk\_w



192\_3000\_1k\_nw



193\_1010\_102\_1k\_w



194\_100\_108\_lk\_ne



195\_100\_108\_lk\_n



196\_100\_108\_ik\_n



197\_100\_108\_ik\_n



198\_100\_105\_1k\_e



199\_600\_201\_1k\_e





200\_600\_201\_fk\_e



201\_600\_fk\_n



202\_1300\_101\_1k\_e



203\_gen\_view\_barn\_ext\_1k\_w



204\_1000\_1400\_1k\_se



205\_gen\_view\_barn\_ext\_1k\_ne



206\_gen\_view\_1010\_lk\_nw



207\_gen\_view\_1010\_obliqu\_lk\_n



208\_gen\_view\_barn\_lk\_n



209\_2400\_lk\_w



210\_gen\_view\_alley\_lk\_e



211\_gen\_view\_farmhouse\_lk\_se



212\_gen\_view\_farmhouse\_lk\_s



213\_gen\_view\_east\_range\_lk\_se



214\_gen\_view\_east\_range\_lk\_se



215\_3000\_3300\_lk\_ne





216\_3000\_lk\_ne



217\_3000\_3100\_lk\_mw



218\_3000\_3100\_lk\_sw



219\_3000\_3500\_lk\_e



220\_3000\_3100\_fk\_se



221\_3000\_3101\_fk\_e



222\_3000\_3100\_jk\_nv



223\_3000\_3100\_jk\_sw