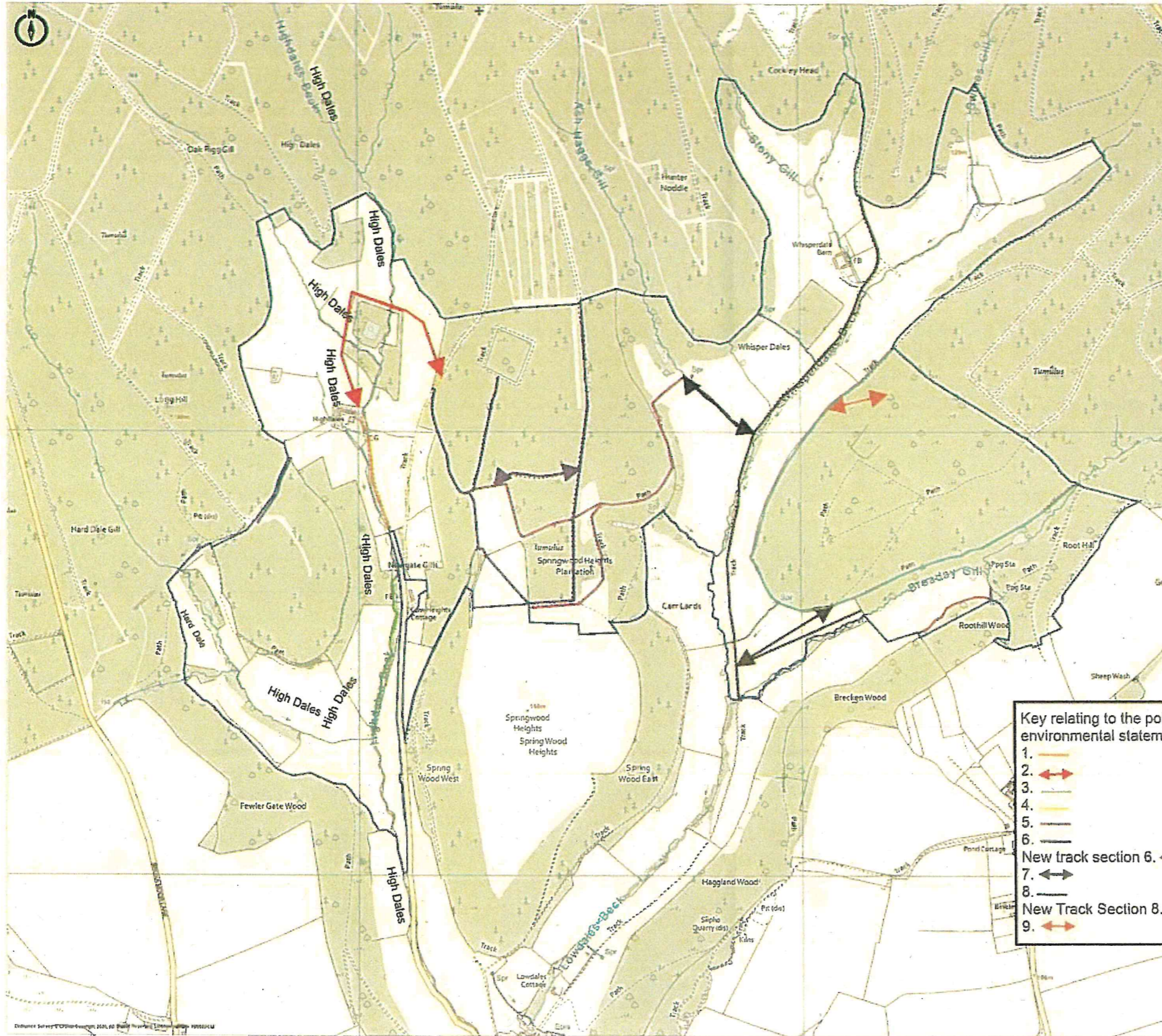


NYMNPA
 - 4 DEC 2019



1. The farm track leading from the council maintained road to Highdale Farmhouse has been scraped off and a levelled track has been laid
2. Created a new track from the farmhouse to the entrance of Springwood, the track follows the edge of the wood in Highdale to link in with the existing track that takes you to Springwood Heights. The new track was created to avoid cutting up the grass hillside to the north east of Highdale Farmhouse
3. The existing farm track from Newgate Gill to Highdale grassland has been scraped off and back filled with crushed stone to 150mm depth
4. The existing forestry track providing access from Highdales to Springwood has been scraped back, levelled and back filled where necessary
5. The existing forestry track has been scraped, levelled and back filled with stone
6. The existing forestry tracks used for timber extraction have been levelled and backfilled where necessary, including new track through woodland for extraction
7. New track created along hedge line, soil scraped back with stone backfilled to prevent vehicles cutting up grassland when leaving the forestry track
8. Main access route for walkers and horses between Silpho Moor and Hackness Estate, the track required scraping off, backfilling of potholes and levelling. New section of track from Turkey Heights to Hackness Estate Boundary
9. Forestry Tracks – Tracks have been opened up by cutting back the undergrowth and levelling where necessary. This was required for the extraction of timber
10. New track along the hillside to extract timber

Key relating to the points noted on environmental statement

- 1. ———
- 2. ↔
- 3. ———
- 4. ———
- 5. ———
- 6. ———
- 7. ↔
- 8. ———
- 9. ↔

New track section 6. ↔

New Track Section 8. ↔

NYMNPA
 17 MAR 2020

