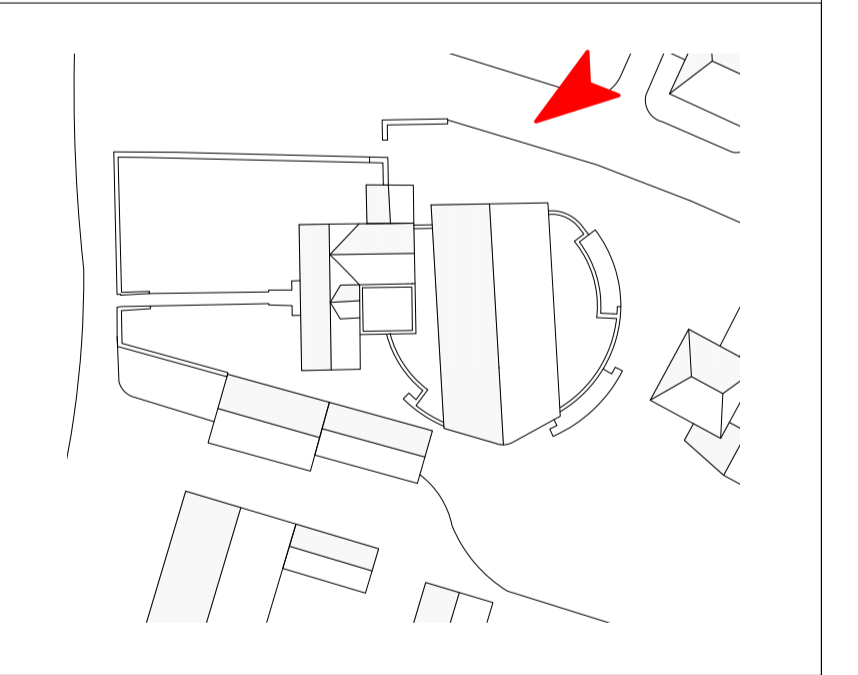


NYMNPA  
04/02/2020



revisions  
A First Issue - issued for planning 30/01/2020

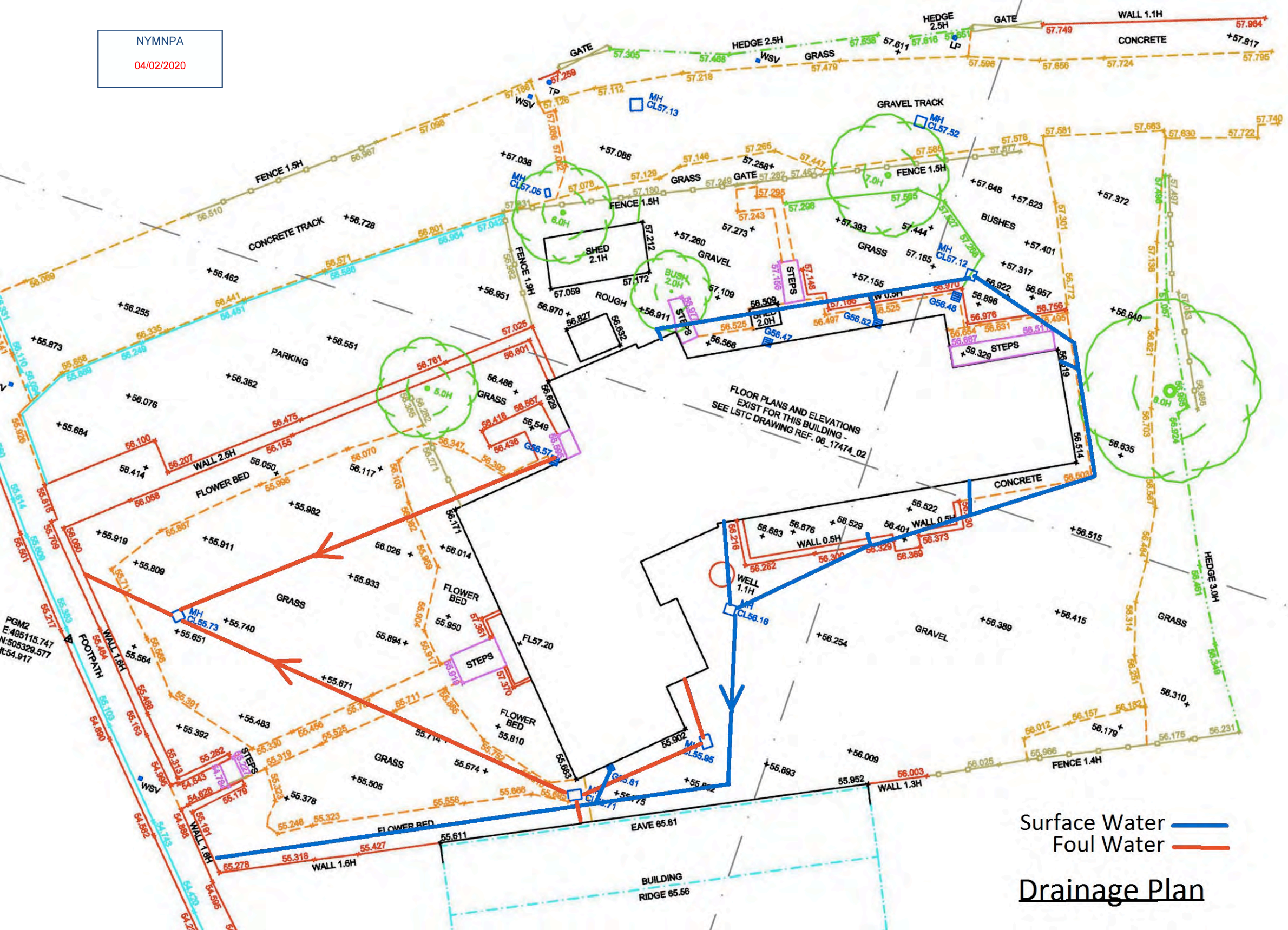
notes  
© COPYRIGHT The copyright in this drawing is vested in Studio Partington and no license or assignment of any kind has been, or is, granted to any third party whether by provision of copies or originals or otherwise unless agreed in writing.  
DO NOT SCALE FROM THIS DRAWING The contractor shall check and verify all dimensions on site and report discrepancies in writing to Studio Partington before proceeding work.  
FOR ELECTRONIC DATA ISSUE Electronic data / drawings are issued as "read only" and should not be interpreted for measurement.  
AREA MEASUREMENT The areas are approximate and can only be verified by a detailed dimensional survey of the completed building. Any decisions to be made on the basis of these predictions, whether as to project viability, pre-letting, lease agreements or the like, should include due allowance for the increases and decreases inherent in the design development and building processes. Figures relate to the likely areas of the building at the current state of the design and using the method of measurement from the Code of Measuring Practice, 6th Edition (RICS Code of Practice). All areas are subject to Town Planning and Conservation Area Consent, and detailed Rights to Light analysis.



key plan

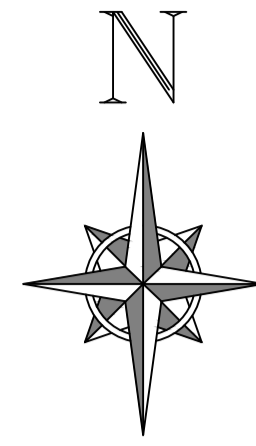
project The Bay Tree  
for Elvington Park Limited  
type Illustrative View 03  
scale Not to scale  
drawing no 0180\_488\_PL\_902



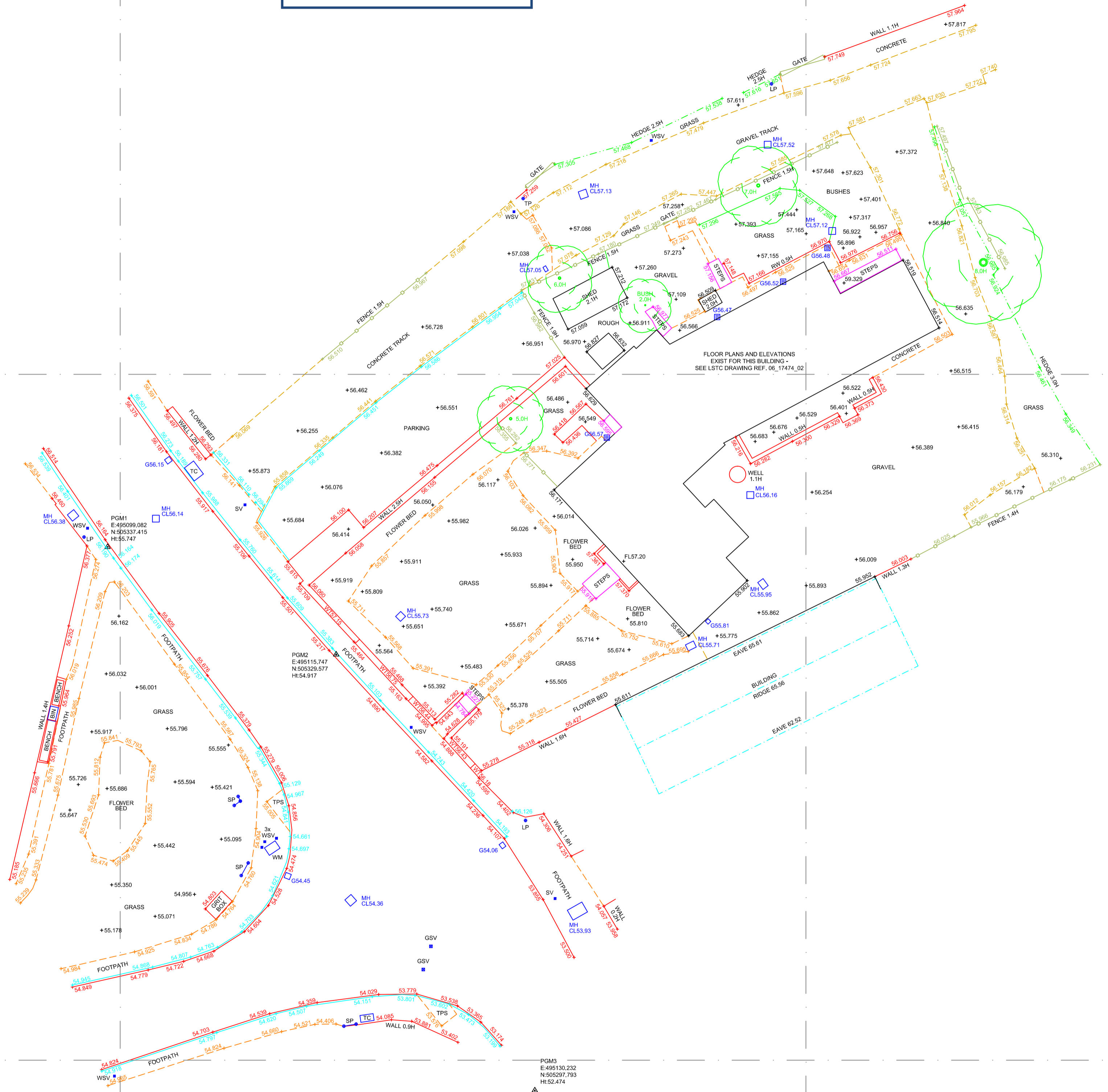


Surface Water — blue line  
Foul Water — red line

### Drainage Plan



**NYMNP**  
**04/02/2020**



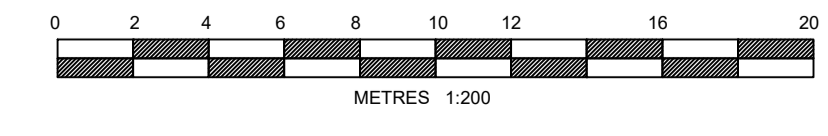
505350N

505300N

495100E

495150E

495200E



REV A	DATE ISSUED 20/10/17	SURVEYED AB	DRAWN DBe	CHKD IW			
DESCRIPTION FIRST ISSUE							
NOTES							
LEVELS ARE RELATED TO O.D. (NEWLYN).							
CO-ORDINATES ARE RELATED TO NATIONAL GRID DERIVED VIA GPS - OSGB36(15) SYSTEM.							
FOR BUILDING FLOOR PLANS & ELEVATIONS, SEE LSTC DRG REF. 06_17474_02							
LEGEND							
+ 111.71	—	SPOT LEVELS					
△	—	SURVEY STATION					
—	—	BUILDING					
—	—	BUILDING (3D)					
—	—	FENCE					
—	—	FOUNDATION					
—	—	GRIDLINE					
—	—	HEDGE					
—	—	KERB TOP					
—	—	ROAD					
—	—	SURFACE					
—	—	TRACK					
—	—	VEGETATION					
—	—	WALL					
ABBREVIATIONS							
CL	—	COVER LEVEL					
FL	—	FLOOR LEVEL					
G	—	GULLY					
GSV	—	GAS STOP VALVE					
H	—	HEIGHT					
LP	—	LAMP POST					
MH	—	MANHOLE					
PGM	—	PERMANENT GROUND MARKER					
SP	—	SIGN POST					
SV	—	STOP VALVE					
TC	—	TELECOMS COVER					
TP	—	TELECOMS POLE					
TPS	—	TACTILE PAVING SLABS					
WM	—	WATER METER					
WSV	—	WATER STOP VALVE					
WT	—	WALL TOP					
<p>LS Transmission Consultancy Limited makes no warranties, express or implied, that compliance with this drawing, or any other document issued by LSTC, would in itself be sufficient to ensure safe systems of work or operation. Users are reminded of their own duties under health and safety legislation.</p>							
CLIENT ELVINGTON PARK LTD.							
PROJECT THE BAY TREE, ROBIN HOOD'S BAY							
TITLE TOPOGRAPHICAL SURVEY							
SCALE 1:200 <small>(UNLESS OTHERWISE STATED)</small>		DRAWN DBe					
DATE SURVEYED 11/10/17- 13/10/17-		CHECKED IW					
DATE ISSUED 23/10/17		APPROVED NM					
<table style="width: 100%; border: none;"> <tr> <td style="width: 33%; border: none; vertical-align: top;"> <b>LSTC</b>  <small>LS Transmission Consultancy Limited</small> </td> <td style="width: 33%; border: none; vertical-align: top;"> <small>LSTC North:</small>            Yorkshire House            York Road            Laine Industrial            East Yorkshire            YO25 5XA            Tel 01377 253617            Fax 01377 259555         </td> <td style="width: 33%; border: none; vertical-align: top;"> <small>LSTC South:</small>            Bourne House            Office 21            475 Goodstone Road            Whyteleafe            Surrey            CR3 0BL            Tel 01883 621114         </td> </tr> </table>					<b>LSTC</b> <small>LS Transmission Consultancy Limited</small>	<small>LSTC North:</small> Yorkshire House York Road Laine Industrial East Yorkshire YO25 5XA Tel 01377 253617 Fax 01377 259555	<small>LSTC South:</small> Bourne House Office 21 475 Goodstone Road Whyteleafe Surrey CR3 0BL Tel 01883 621114
<b>LSTC</b> <small>LS Transmission Consultancy Limited</small>	<small>LSTC North:</small> Yorkshire House York Road Laine Industrial East Yorkshire YO25 5XA Tel 01377 253617 Fax 01377 259555	<small>LSTC South:</small> Bourne House Office 21 475 Goodstone Road Whyteleafe Surrey CR3 0BL Tel 01883 621114					
ORIGINAL SIZE A1	DRAWING NUMBER 06_17474_01			REV A			