

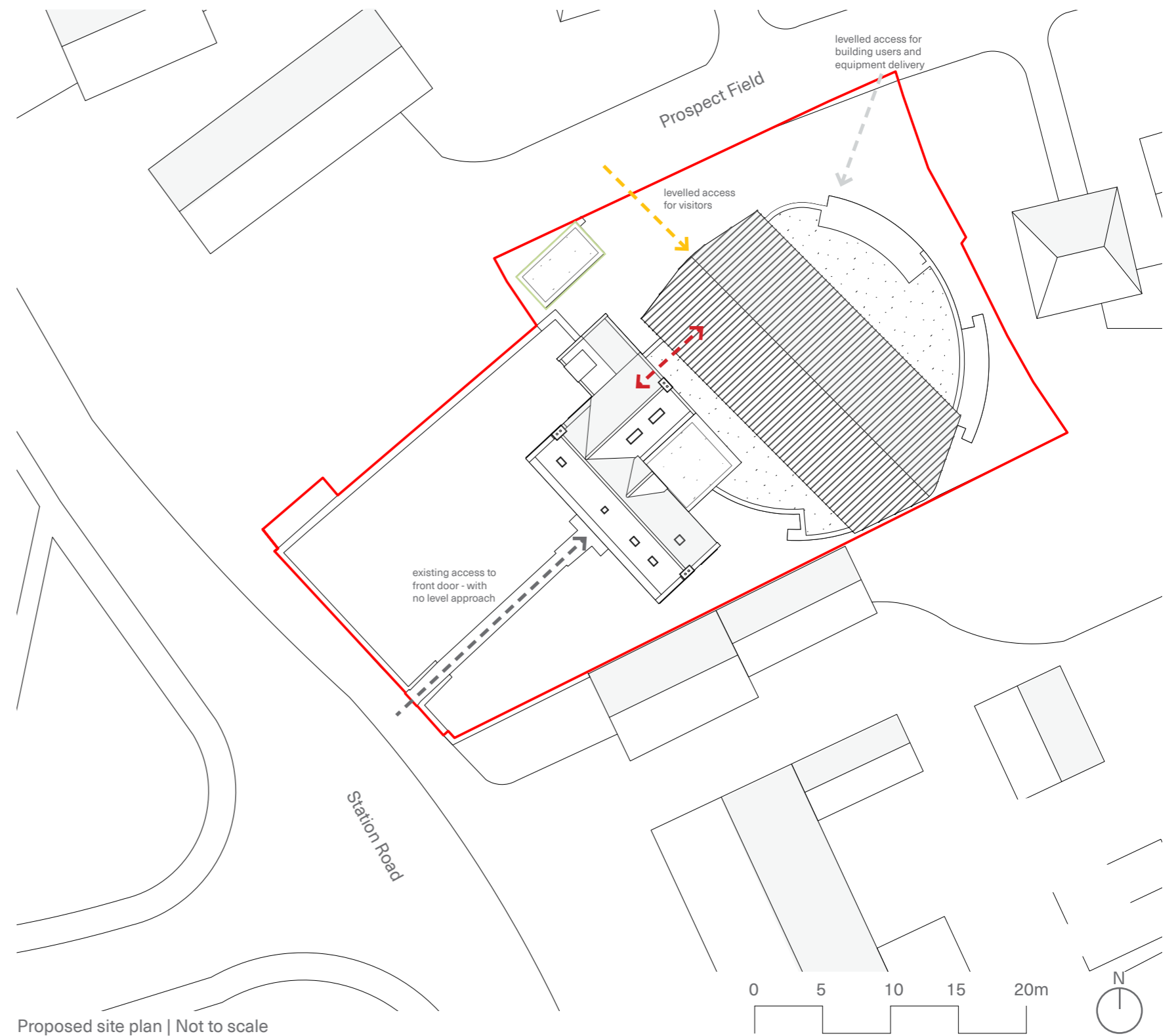
6.0 The Proposal

Access and delivery to the studio primarily will be from Prospect Field. One of the features of a bespoke studio is that it is fully equipped with the highest quality instruments and recording and mixing equipment in place. Equipment installation and deliveries are not frequent but level access across all of the spaces is essential to allow easy movement of large instruments and full accessibility for the musicians and composers. To appeal to a wide range of local users the studio will offer substantially more space (including the substantial floor area for acoustic insulation and adjustable baffles etc.), and better equipment and facilities than an improvised home-studio.

Visitors who do not require disabled access can approach the studio through the main house and one of the large rooms on the ground floor will become a classroom and briefing room for group visits. Refreshments and break-out space will be provided in the other ground floor areas.

Key

- connection between recording studio and original building in same position as existing connection between 'bedroom block' and original building
- main studio public entrance
- main house entrance
- secondary/ deliveries entrance for delivery of musical instruments
- bin store
- application site



7.0 Layout

The multi-purpose studio will cater for electronic, classical, popular, film and acoustic music and the live space has to be an optimal 200 sq m in plan to accommodate a jazz or brass band, a modest classical ensemble (quartet/quintet etc) or a choral group. The studio is the main element of the ground floor space together with ancillary functions such as reception, a small office and welfare facilities, some of which will be incorporated within the existing building.

On the upper floors writing and relaxing spaces are provided and there is some residential accommodation so that the artists can work and sleep to their own timetable. The live room needs to be a double height volume.

Appearance and response to consultation

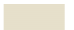



The main features of the external treatment of the extension are:

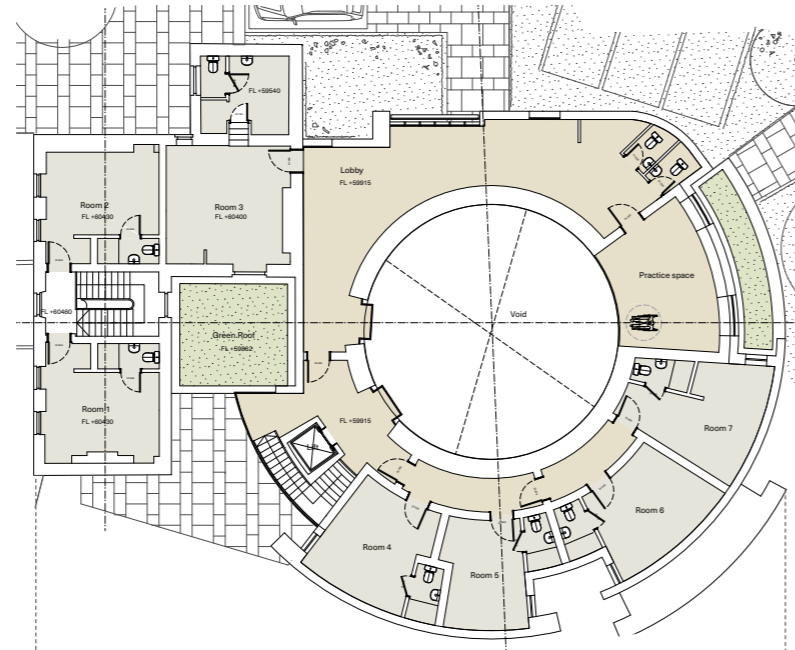
- contrasting treatment to original stone Bay Tree
- subservient scale: ridge and eaves are lower than existing Bay Tree and comparable in scale to neighbouring properties to the north and east.
- ground floor set down (relative to Bay Tree) to reduce overall height

The proposal has been substantially reduced in scale from the scheme presented to planning and heritage officers on 31st July 2019. The staircase was relocated from the entrance side and the building frontage moved back from Prospect Field.

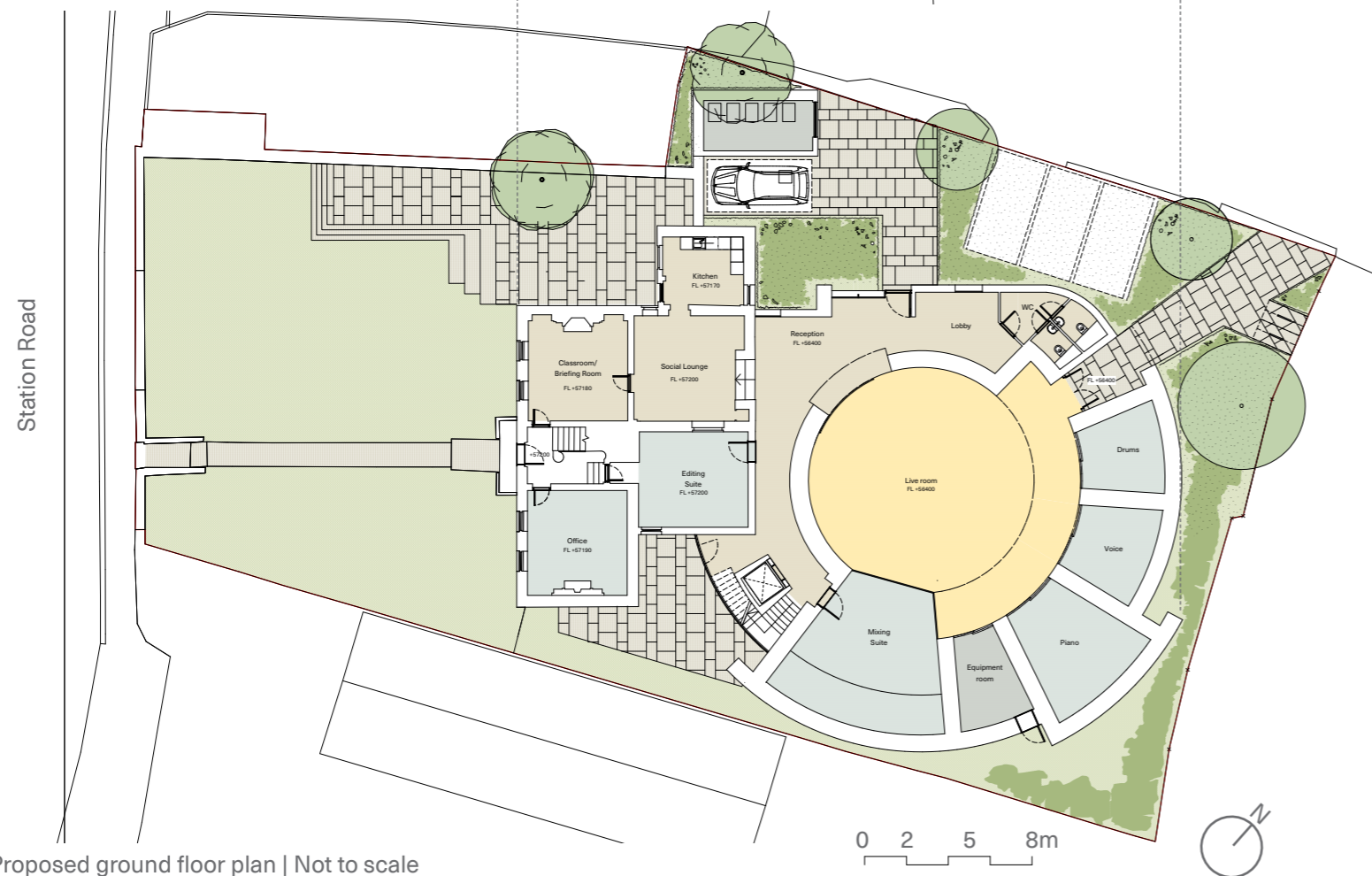
The size of the roof has been reduced substantially (in response to comment made in the pre-application meeting) and it is now of a comparable size to adjacent dwelling, for instance on Prospect Field and Thorpe Lane.

Key

-  lobby/ lounge / utilities area
-  studios & suites
-  live room
-  accommodation



Proposed first floor plan | Not to scale



Proposed ground floor plan | Not to scale

8.0 Materials

The main external material of the building is brick to match the lower key surroundings and leave the listed Bay Tree as the only complete building in stone.

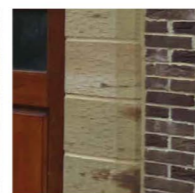
The proposed extension will be constructed in brickwork with a traditional buff coloured stone surrounds to vertically proportioned windows.

The north entrance is marked with full height glazing and bronze coloured horizontal louvres. The edges of the adjacent brickwork are also framed with York stone linings and copings.

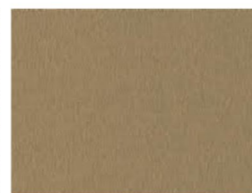
Materials palette



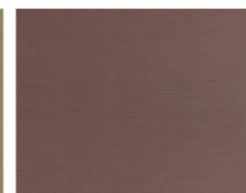
1. Multi red stock brick



2. York stone for coping & linings



3. Bronze anodised aluminium frames/louvres

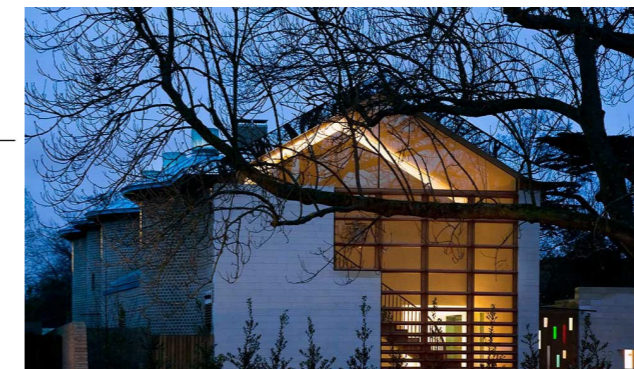


4. Matt red patinated zinc standing seam roof

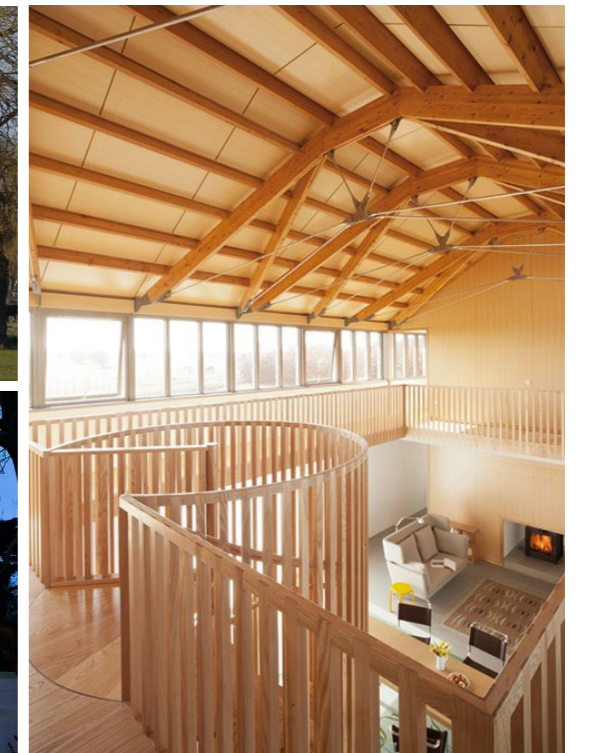
Precedents for reference



Floating Roof over solid masonry base - Living Architecture: The Long House, Norfolk



Uplighting at Entrance - College Road, London



Double Height Central Space, Norfolk



Recording studios main entrance view from Prospect Field : Final Proposal



Before: Recording studios main entrance view from Prospect Field : Proposal at Pre-application July 2019



After: View of main and secondary studios' entrance looking towards the rear of the existing Grade II listed Bay Tree : Final Proposal



View from Station Road looking south towards the coast

Page left intentionally blank

