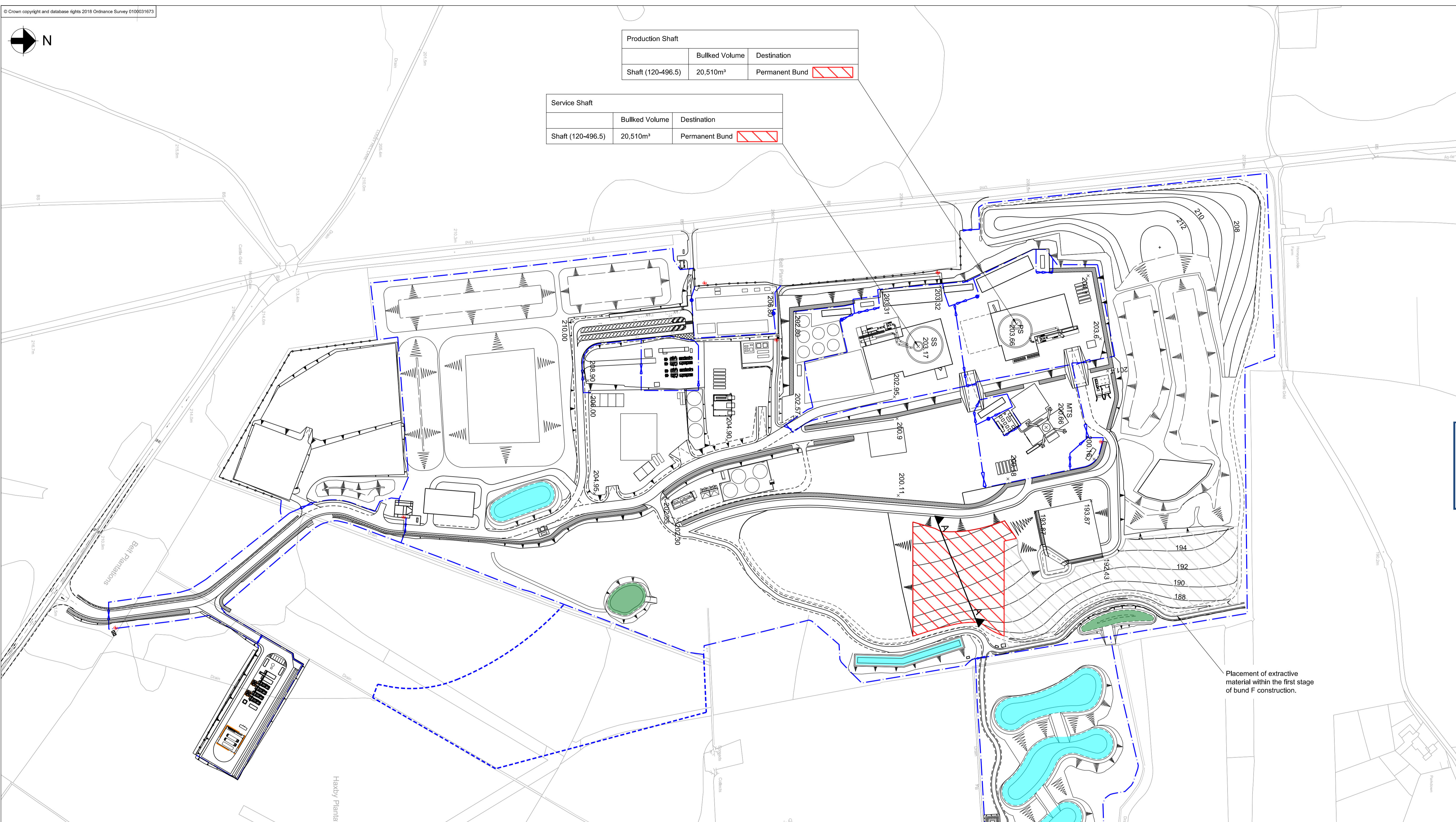


Production Shaft		
	Bulked Volume	Destination
Shaft (120-496.5)	20,510m <sup>3</sup>	Permanent Bund

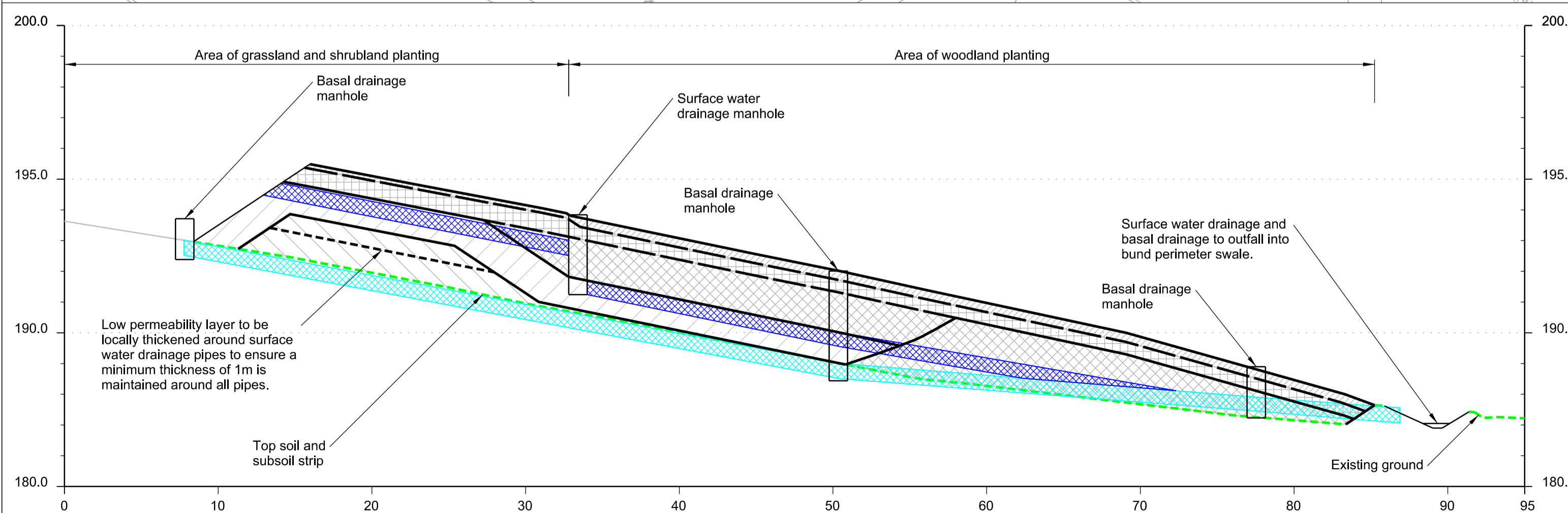
Service Shaft		
	Bulked Volume	Destination
Shaft (120-496.5)	20,510m <sup>3</sup>	Permanent Bund

- Notes:
- Refer to drawing 40-ARI-WS-7100-CI-18-01067 for Phase 12 masterplan.
- Key:
- Construction phase security fence / inner site access control fence
  - 2.4m high palisade fence
  - Topographical survey
  - Proposed layout
  - 3m high environmental barrier
  - Proposed drainage ditch
  - Surface water drainage attenuation pond
  - Surface water drainage wetland
  - Telecommunication mast
  - Temporary Heras fencing



**NYMNPA**  
14/04/2020

Placement of extractive material within the first stage of bund F construction.



- Key to section:
- Top Soil - 300mm thick for woodland areas and a mosaic of 0 - 300mm thick in grass and shrubland areas.
  - Upper subsoil - 400mm thick for woodland areas and 600mm thick for grass and shrubland areas.
  - Lower subsoil - 1.3m for woodland areas.
  - Extractive material
  - 1m thick low permeability layer
  - 225mm Ø non-perforated basal drainage carrier pipe
  - 150mm Ø surface water drainage carrier pipe

**Indicative Section A-A**  
Scale H 1:250 V:125

1	09/04/20	KK	JB	CW
Issue				
0	09/04/20	KK	JB	CW
Issue				
A	19/03/20	KK	JB	CW
For comment				
REV	DATE	BY	CHKD	APPD



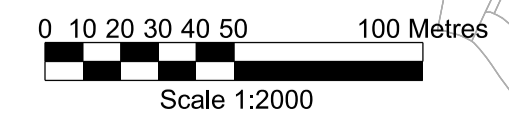
Drawing Title: **Woodsmith Mine Construction Phase 12 Earthworks**

SCALE @ A1: **1:2000**

Job No: **253285**

DRG No: **40-ARI-WS-7100-CI-18-01072**

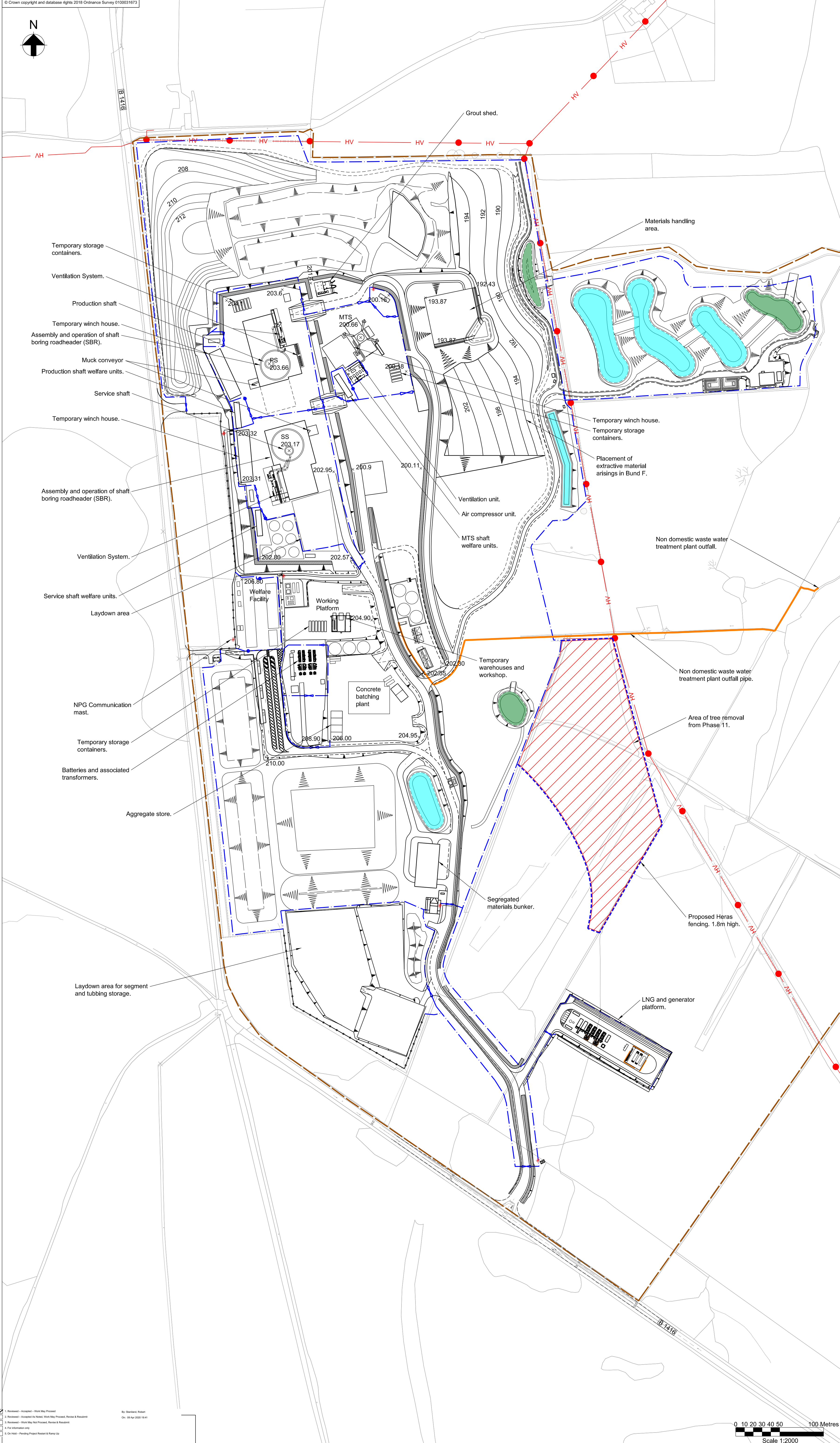
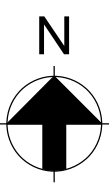
REV **1**



Reviewed - Approved - Work May Proceed  
 Reviewed - Approved As Noted - Work May Proceed, Review & Resubmit  
 Reviewed - Work May Not Proceed, Review & Resubmit  
 For Information Only  
 On Hold - Pending Project Restart & Progress

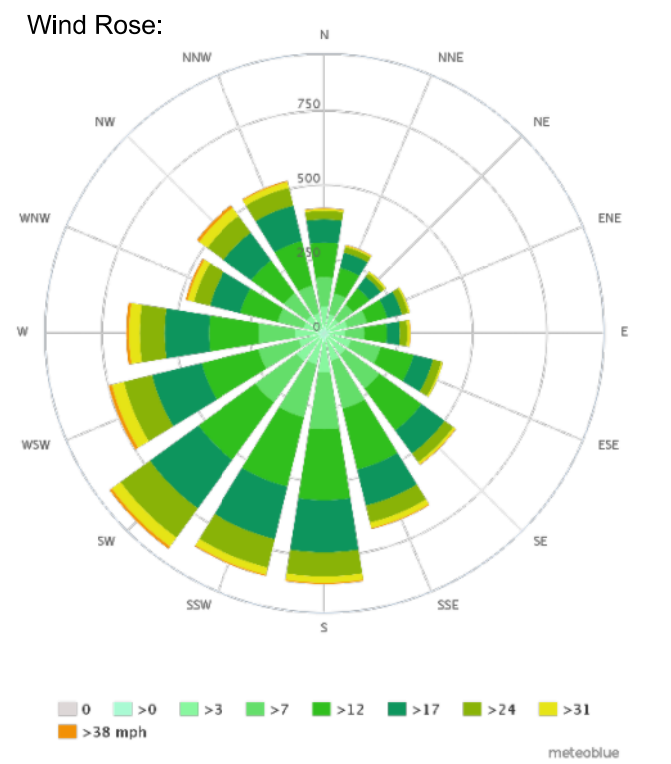
By: **Geoffrey Rickett** On: **09/04/2020 13:18**

THIS DRAWING IS CONFIDENTIAL AND THE PROPERTY OF SIRIUS MINERALS PLC. IT MUST NOT BE COPIED WITHOUT WRITTEN CONSENT.



- Key:**
- Land ownership boundary
  - - - Construction phase security fence / inner site access control fence
  - - - 2.4m high palisade fence
  - Topographical survey
  - Proposed layout
  - 3m high environmental barrier
  - Proposed drainage ditch
  - Surface water drainage attenuation pond
  - Surface water drainage wetland
  - + Telecommunication mast
  - - - Temporary Heras fencing
- Key to utilities:**
- HV Existing Northern Powergrid electrical apparatus

**NYMNPA**  
14/04/2020



- Temporary storage containers.
- Ventilation System.
- Production shaft
- Temporary winch house.
- Assembly and operation of shaft boring roadheader (SBR).
- Muck conveyor
- Production shaft welfare units.
- Service shaft
- Temporary winch house.
- Assembly and operation of shaft boring roadheader (SBR).
- Ventilation System.
- Service shaft welfare units.
- Laydown area
- NPG Communication mast.
- Temporary storage containers.
- Batteries and associated transformers.
- Aggregate store.
- Laydown area for segment and tubing storage.

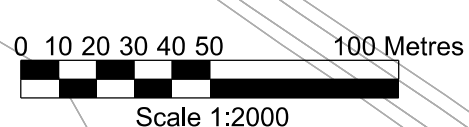
- 1. Reviewed - Accepted - Work May Proceed
  - 2. Reviewed - Accepted - Work May Proceed - Review & Resubmit
  - 3. Reviewed - Accepted - Work May Proceed - Review & Resubmit
  - 4. Reviewed - Work May Not Proceed - Review & Resubmit
  - 5. For Information Only
  - 6. On Hold - Pending Permit Request & Funding
- By: **Stewart, Robert**  
On: 08 Apr 2020 14:41

0	09/04/20	KK	JB	CW
Issue				
B	09/04/20	KK	JB	CW
For comment				
A	19/03/20	KK	JB	CW
For comment				
REV	DATE	BY	CHKD	APPD

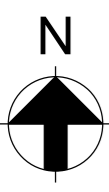


Drawing Title: **Woodsmith Mine Construction Phase 12 Masterplan**

SCALE: 1:2000  
Job No: **253285**

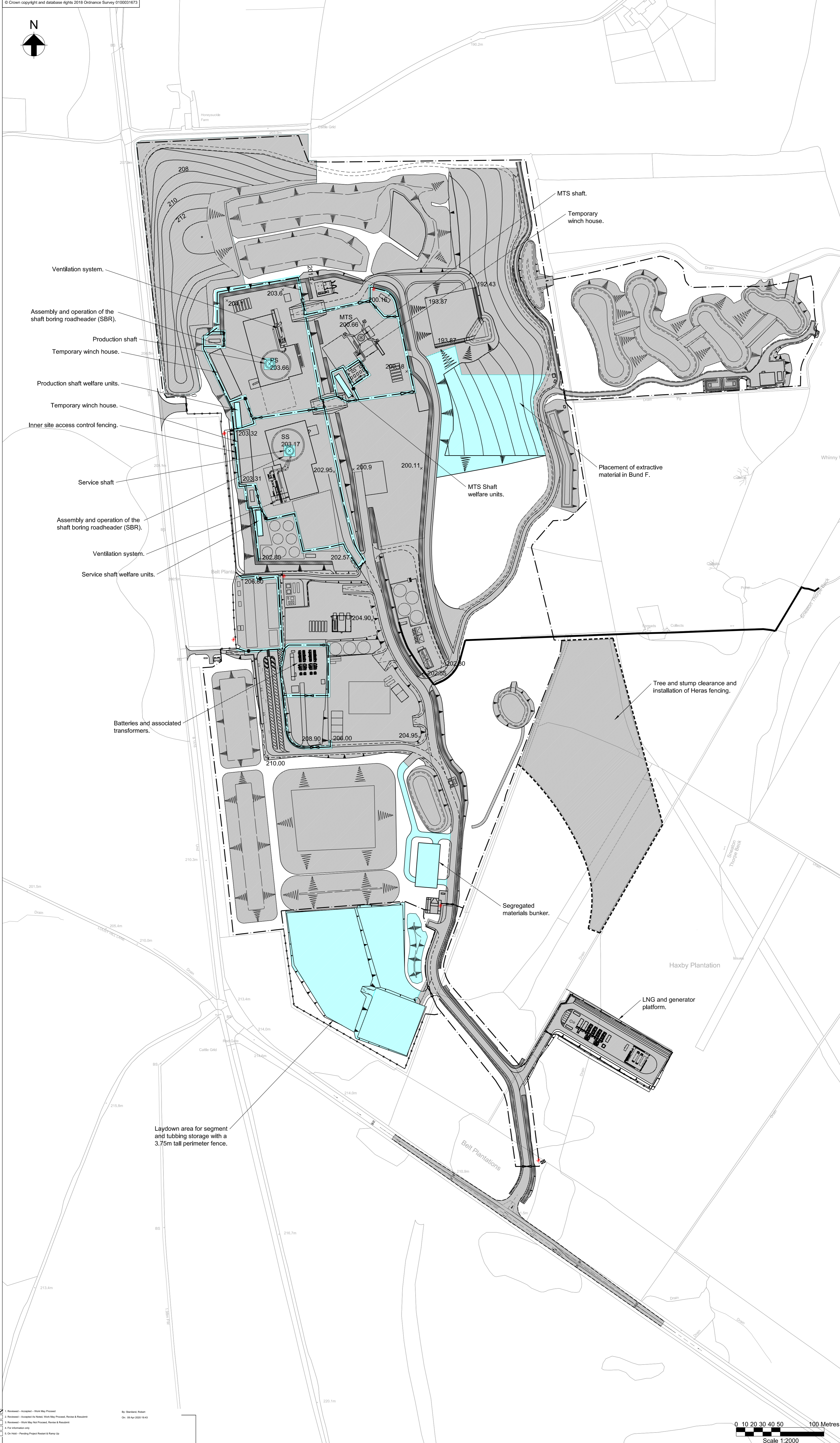


DRG No: **40-ARI-WS-7100-CI-22-01067** REV **0**



Key:  
 Previous Planning Phases  
 Phase 12

**NYMNPA**  
 14/04/2020



- Ventilation system.
- Assembly and operation of the shaft boring roadheader (SBR).
- Production shaft
- Temporary winch house.
- Production shaft welfare units.
- Temporary winch house.
- Inner site access control fencing.
- Service shaft
- Assembly and operation of the shaft boring roadheader (SBR).
- Ventilation system.
- Service shaft welfare units.

Batteries and associated transformers.

Laydown area for segment and tubing storage with a 3.75m tall perimeter fence.

1	09/04/20	KK	JB	CW
Issue				
0	09/04/20	KK	JB	CW
Issue				
A	19/03/20	KK	JB	CW
For comment				
REV	DATE	BY	CHKD	APPD



Drawing Title: **Woodsmith Mine Site Construction Phase 12 Planning Phases Comparison General Arrangement**

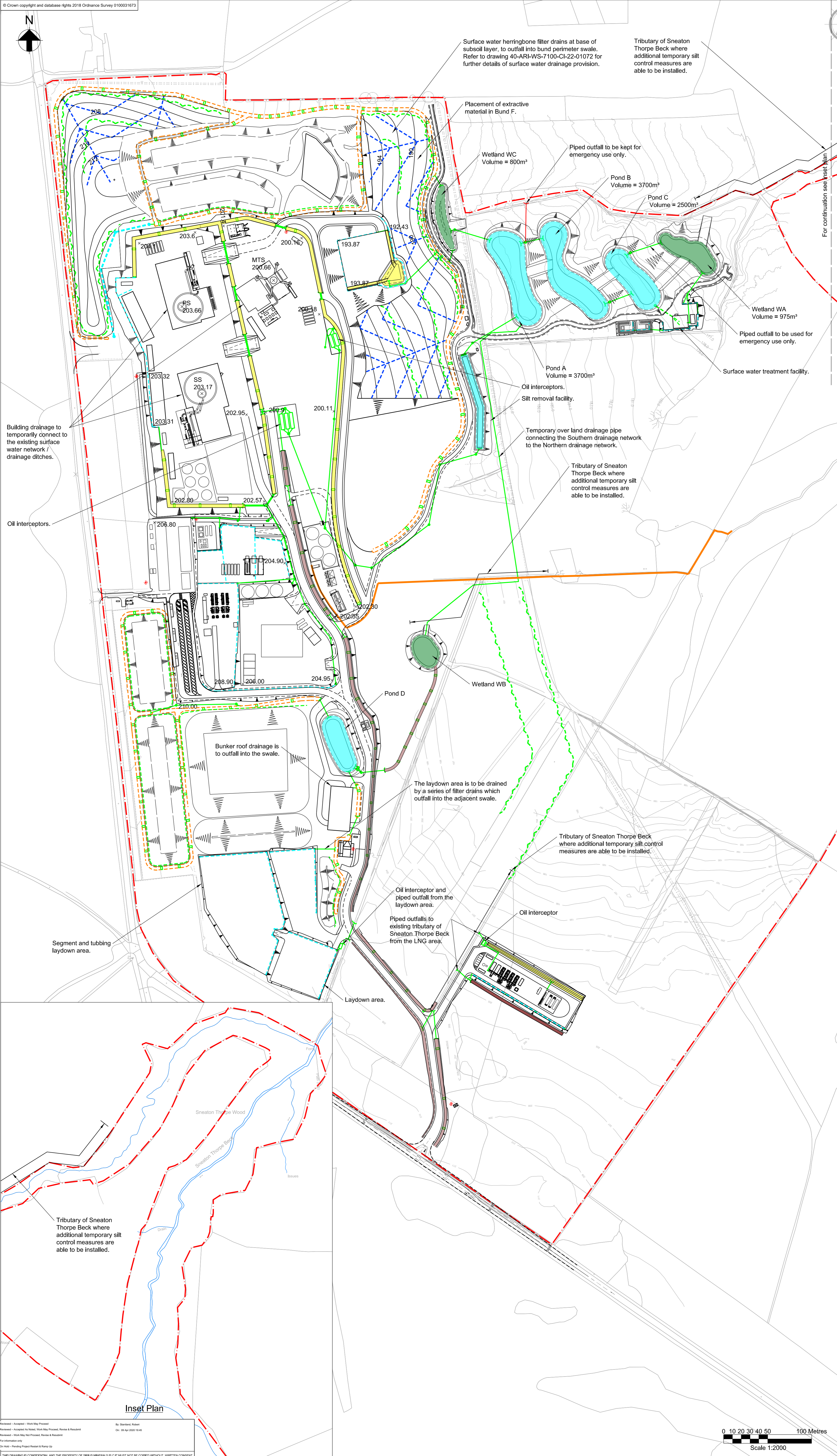
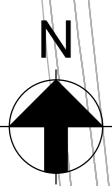
SCALE: 1:2000  
 Job No: **253285**



DRG No: **40-ARI-WS-7100-CI-22-01068** REV **1**



THIS DRAWING IS CONFIDENTIAL AND THE PROPERTY OF SIRIUS MINERALS PLC. IT MUST NOT BE COPIED WITHOUT WRITTEN CONSENT.



Notes:

1. This drawing shows the proposed surface water drainage network for the Phase 12 works.

Key:

- Land Ownership Boundary
- Proposed General Arrangement layout
- Surface water drainage attenuation pond
- Wetland
- Existing watercourses / ditch
- Manhole and carrier pipe
- Swale
- Check dam
- Silt fence
- Ditch
- Ditch with impermeable liner
- Inlet / outlet headwall
- Filter drain
- Earthworks herringbone filter drain
- Non domestic waste water discharge pipe

NYMNP  
 14/04/2020

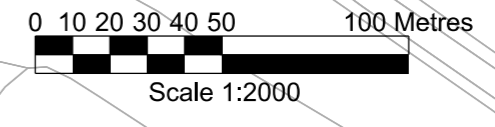
1	09/04/20	KK	JB	CW
Issue				
0	09/04/20	KK	JB	CW
Issue				
A	19/03/20	KK	JB	CW
For comment				
REV	DATE	BY	CHKD	APPD



Drawing Title: Woodsmith Mine Site Construction Phase 12 Drainage General Arrangement  
 SCALE: 1:2000  
 Job No: 253285



DRG No: 40-ARI-WS-7100-CI-22-01069  
 REV 1

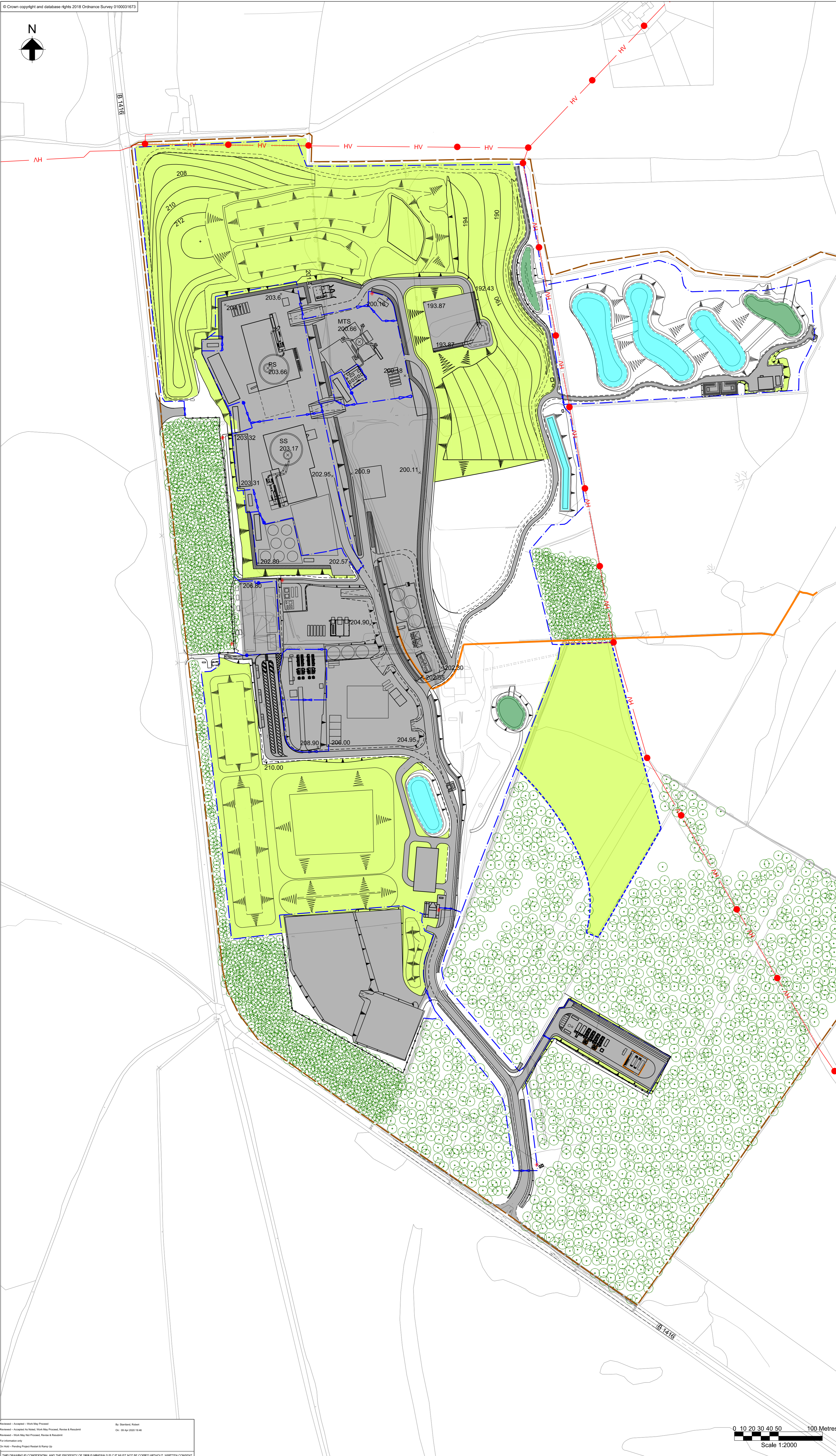
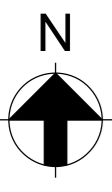


Inset Plan  
 Tributary of Sneaton Thorpe Beck where additional temporary silt control measures are able to be installed.

1. Reviewed - Approved - Work Not Proceed  
 2. Reviewed - Approved for Issue - Work May Proceed, Review & Resubmit  
 3. Reviewed - Work May Not Proceed, Review & Resubmit  
 4. For Information Only  
 5. On Hold - Pending Project Restart & Permit Up

THIS DRAWING IS CONFIDENTIAL AND THE PROPERTY OF SIRIUS MINERALS PLC IT MUST NOT BE COPIED WITHOUT WRITTEN CONSENT

I:\sharepoint\leeds\user\20000033285-0012\_Amp - P11 Platform Redesign\20 CAD P10 - Platform Redesign\Phase 12\40-ARI-WS-7100-CI-22-01069.dgn



- Key:
- Hard landscaping
  - Soft landscaping
  - Existing trees
  - Land ownership boundary
  - Construction phase security fence / inner site access control fence
  - Temporary Heras fencing
  - 3m high environmental barrier
  - HV - Existing HV overhead cables

NYMNP  
 14/04/2020

1	09/04/20	KK	JB	CW
Issue				
0	09/04/20	KK	JB	CW
Issue				
A	19/03/20	KK	JB	CW
For comment				
REV	DATE	BY	CHKD	APPD



Sirius Minerals | Rescliffe House | Lake View | Scarborough | YO11 3ZB | North Yorkshire | UK | www.siriusminerals.com

Drawing Title: **Woodsmith Mine Construction Phase 12 Hard and Soft Landscaping Plan**

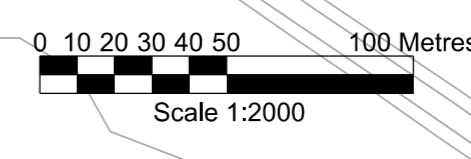
SCALE: 1:2000

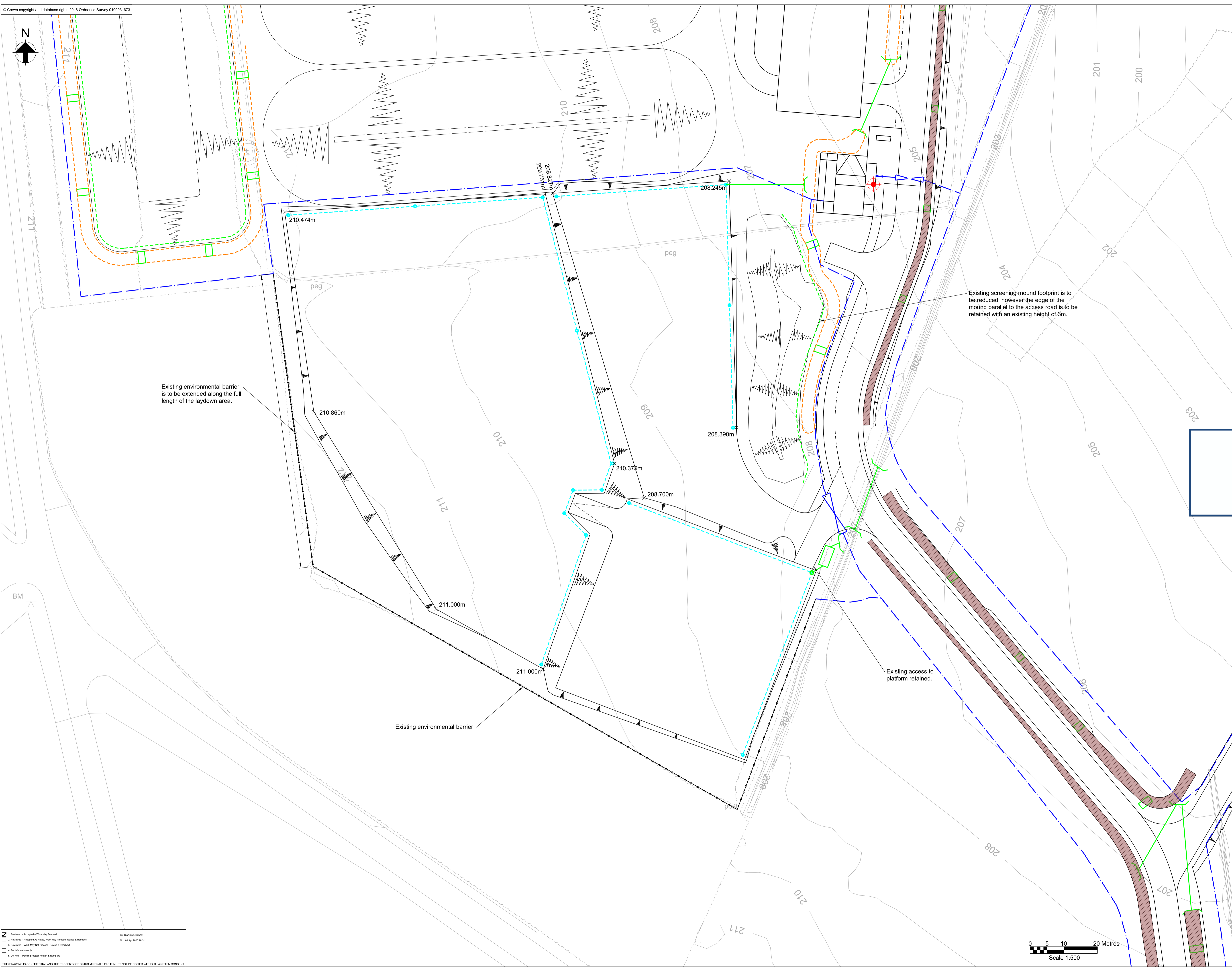
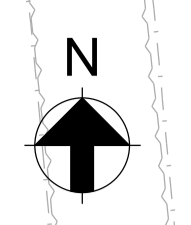
Job No: **253285**



DRG No: **40-ARI-WS-7100-CI-22-01070** REV **1**

1. Reviewed - Approved - Work Not Proceed  
 2. Reviewed - Approved for Issue - Work May Proceed, Review & Resubmit  
 3. Reviewed - Work May Not Proceed, Review & Resubmit  
 4. For Information Only  
 5. On Hold - Pending Project Restart & Permit Up  
 By: [Signature] Date: 09 Apr 2020 15:45  
 THE DRAWING IS CONFIDENTIAL AND THE PROPERTY OF SIRIUS MINERALS PLC. IT MUST NOT BE COPIED WITHOUT WRITTEN CONSENT.





- Key:
- 3m high environmental barrier
  - Filter drain
  - Carrier pipe
  - 2.4m high black weld mesh fence
  - Surface water drainage swale

**NYMNPA**

**14/04/2020**

0	09/04/20	KK	JB	CW
Issue				
B	19/03/20	JB	CW	CW
For comment				
A	16/08/19	KK	CW	AH
For comment				
REV	DATE	BY	CHKD	APPD



Drawing Title: Woodsmith Mine  
Construction Phase 12  
Additional Laydown Area

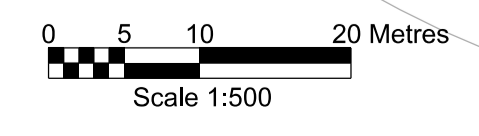
SCALE @ A1: 1:500

Job No: 253285



DRG No: 40-ARI-WS-7100-CI-22-01071

REV 0



By: [Name] On: [Date]

Reviewed - Approved - Work May Proceed  
 Reviewed - Approved for Hand - Work May Proceed, Review & Resubmit  
 Reviewed - Work May Not Proceed, Review & Resubmit  
 For Information Only  
 On Hold - Pending Project Restart & Permit Up

THIS DRAWING IS CONFIDENTIAL AND THE PROPERTY OF SIRIUS MINERALS PLC IT MUST NOT BE COPIED WITHOUT WRITTEN CONSENT

