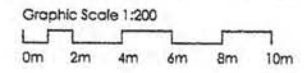


This drawing may be based on the information as supplied by third party as such Barrett+Barrett Ltd make no guarantee as to its accuracy. The features as illustrated are thus approximate and subject to a detailed Topographical and/or Measured Building Survey, Statutory Service enquiries and the confirmation by the client of all legal boundaries.

Scaling from this drawing will not be permitted under any circumstance figured dimensions must be worked in all cases, taken from the face of partitions, grid lines or any other elements as prescribed on the drawing. Discrepancies must be reported to Barrett+Barrett Ltd prior to commencement of any work.

Barrett+Barrett Ltd grant licence to the intended recipient to employ the information as contained in this drawing for the purposes connected with related project only. Copyright of this information remains solely the property of Barrett+Barrett Ltd unless otherwise assigned in writing. Any breach of the terms of this licence results in the termination of the licence and the fee and any resulting copies must be returned to Barrett+Barrett Ltd irrevocable.



unit (01) and (02) local occupancy  
 unit (03) (04) (05) and (06) holiday lets

- key**
- foul water
  - surface water
  - re rodding eye
  - fw mh proposed foul water manhole

og obscure glazing

C	30.08.19	revised following planning officer's comments	EA
B	23.07.19	revised following planning officer's comments	EA
A	03.07.19	revised following meeting with planning department	EA



Barrett+Barrett Architect  
 Norwich  
 Mortar Office  
 York  
 LSTC

www.barrettarchitect.com

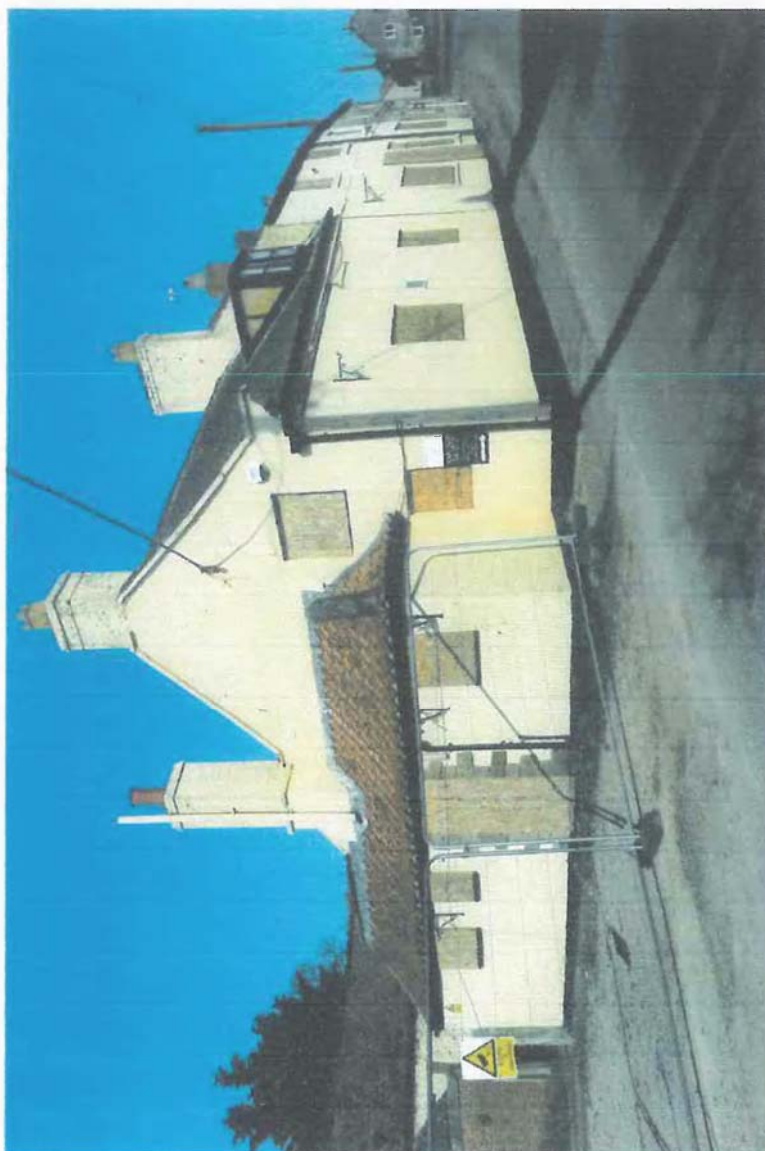
Project  
 Proposed Holiday Accommodation Dev at Plough Inn PH, Boonhill Road, Fadmoor, YO2

Client  
 Pennyholme Estate

Dwg Title  
 Proposed Site/ Drainage Plan

Date	Scale	Drawn	Checked
Mar 2018	1:200 @ A3	SC	PAB
1527	Dwg No: 110	Rev: C	Status: Planning

Plough 1



PLOUGH 2

Plough 22 =

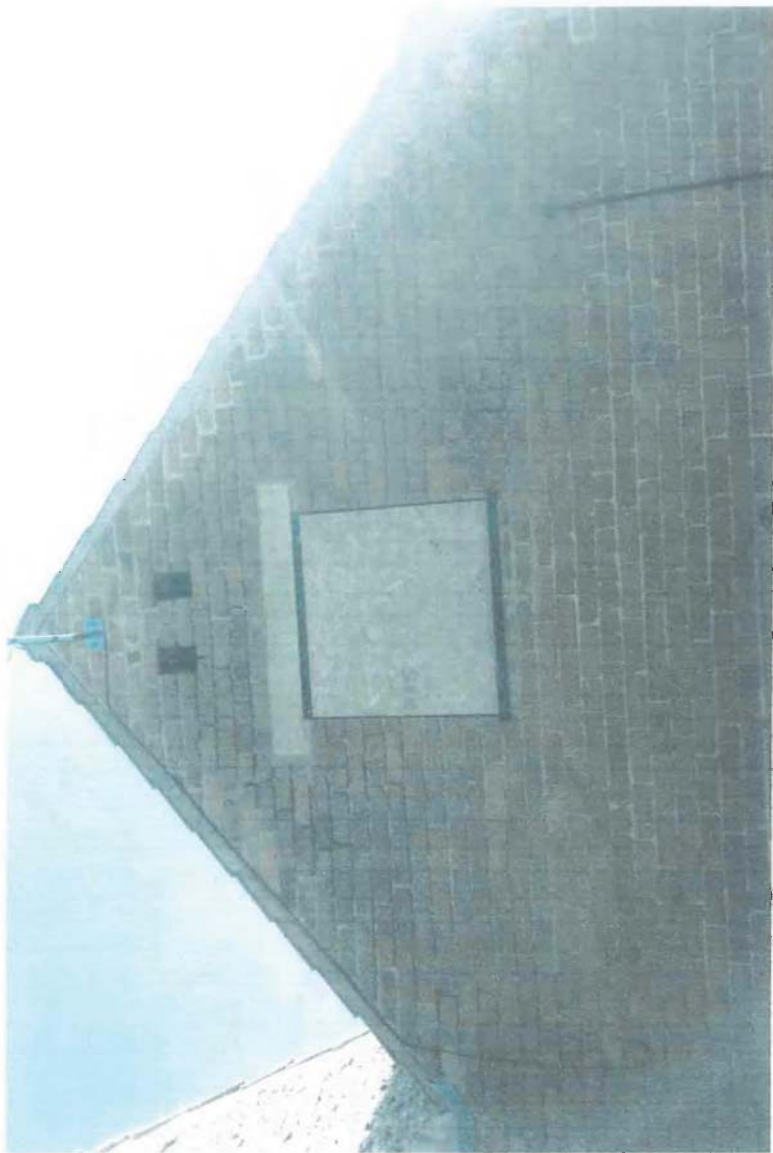




Plough 3



Plough 4



Plough 5

