
From: David McCormack
Sent: 16 August 2020 14:42
To: Hilary Saunders <h.saunders@northyorkmoors.org.uk>
Cc: Jim Leatham (j)
Subject: RE: Hambleton Inn - Planning Approval

Dear Hilary

We are pleased to attach the flood exceedance plan in relation to the above development . Hopefully this is sufficient to enable the planning approval notice to be issued

Kind regards,

David McCormack RIBA APMP
Director



Architecture and Project Management

London Office – The Busworks
North Road
London
N7 9DP

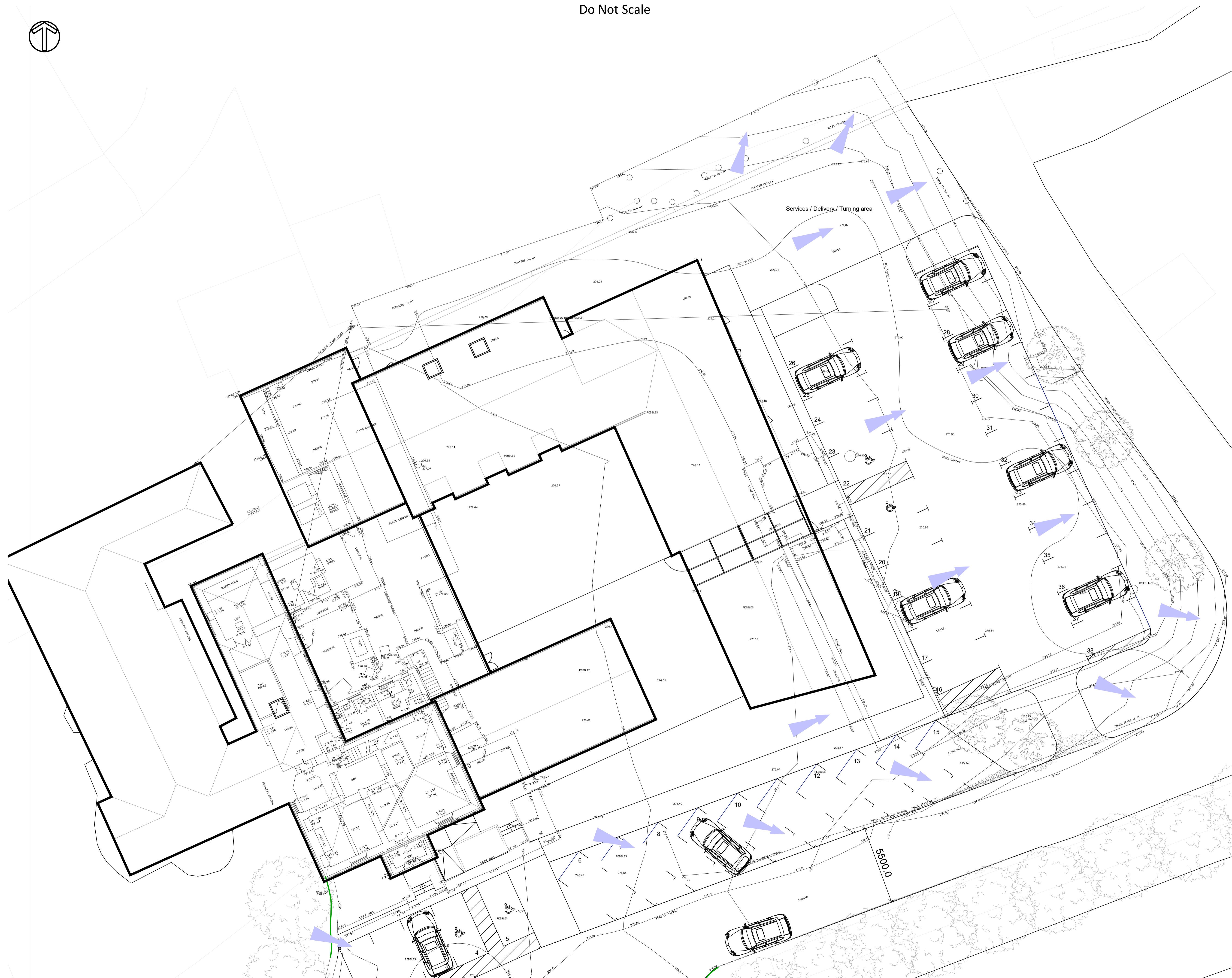
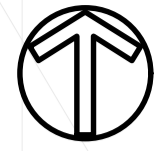
Harrogate Office - Studio Map Limited
Bridge House
1-2 Station Bridge
Harrogate
HG11SS

Website www.studiomap.co.uk^N

DISCLAIMER NOTICE

This e-mail is intended only for the addressee named above and the contents should not be disclosed to any other person. Any views or opinions presented are solely those of the sender and do not necessarily represent those of Studio Map Limited unless otherwise specifically stated. As internet communications are not secure we do not accept legal responsibility for the contents of this message nor responsibility for any change made to this message after it was sent by the original sender. This email and

Do Not Scale



DESIGN REVIEW				
Design review by:	**	Checked by:	**	
Residual hazards:				
⚠ Health, Safety & Environmental Notes ⚠				
NOTES				
Key				
Flow direction arrows indicate direction of overland flows following event/system exceedence				
<div style="border: 1px solid black; padding: 5px; display: inline-block;"> NYMNP 17/03/2020 </div>				
04/08/20	For planning		RP	RP
Date	Description	By	Chk	Rev
<h1 style="margin: 0;">ADEPT</h1> <p style="margin: 0;">CIVIL AND STRUCTURAL CONSULTING ENGINEERS</p> <p style="margin: 0; font-size: small;">Web: www.adeptsce.com Originating Office</p>				
Project				
Hambleton Inn				
Title				
Flood Exceedence drawing				
Client				
Studio Map				
Scale @ A1	Initial author	Initial checker	Approver	Initial Date
1:125	RP	RP	RP	16/08/08
Status	S1	Purpose	Information	
Project Number	Originator	Volume	Level	Type
00.20455-ACE-00-XX-DR-C-SK-0101-P1				