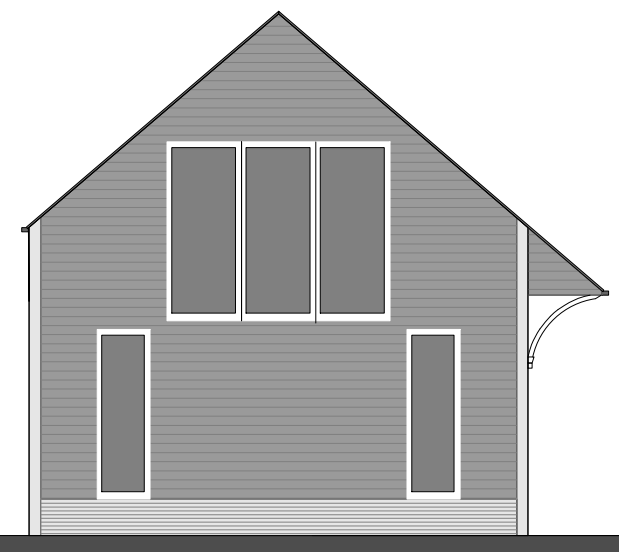
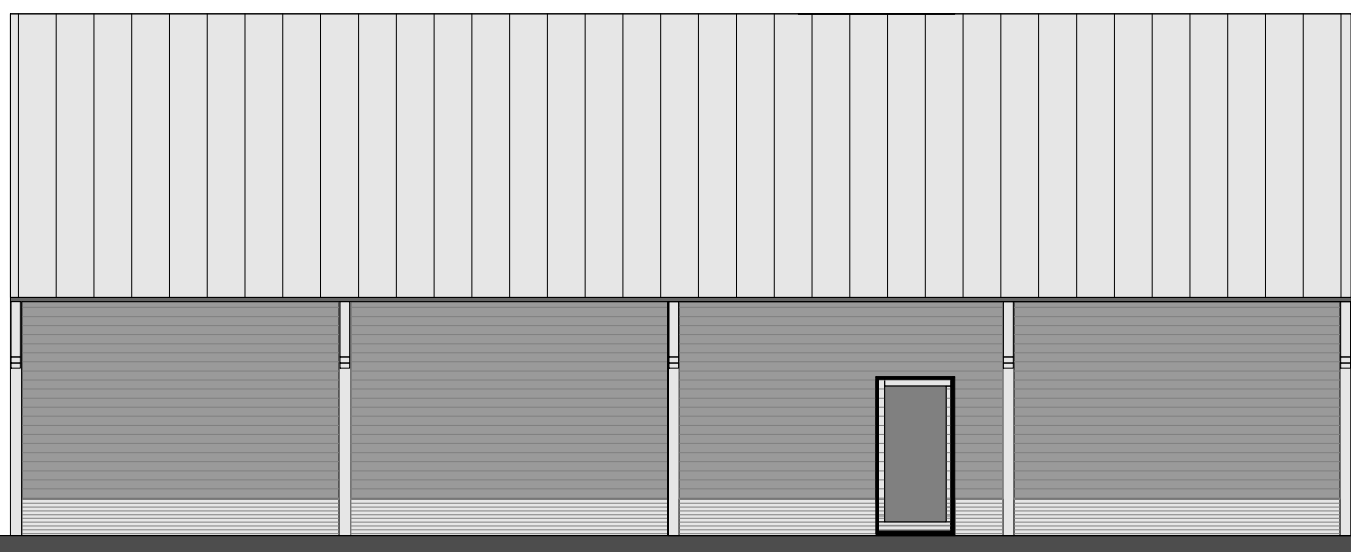


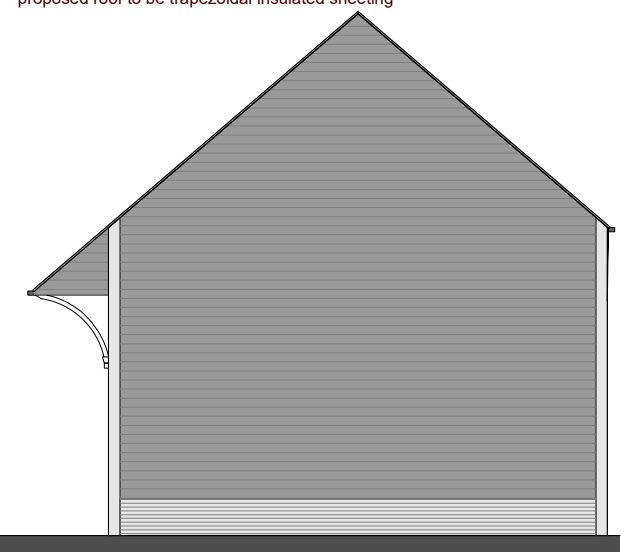
proposed roof to be trapezoidal insulated sheeting



west elevation



south elevation

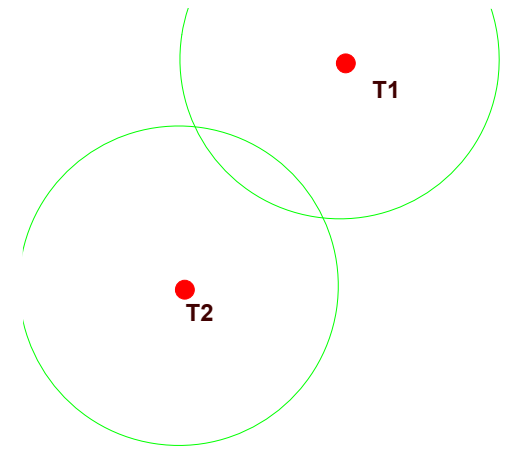


east elevation

roof glazing and vertical wall glazing to be on powder coated aluminium frame

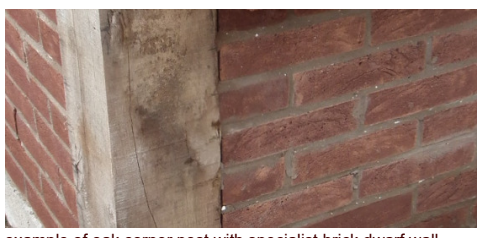


north elevation



- T1 - pinus sylvestris
- T2 - pinus sylvestris
- T3 - pinus sylvestris
- T4 - pinus sylvestris
- T5 - pinus sylvestris
- T6 - pinus sylvestris
- T7 - pinus sylvestris
- T8 - pinus sylvestris

NYMNP
26/10/2020



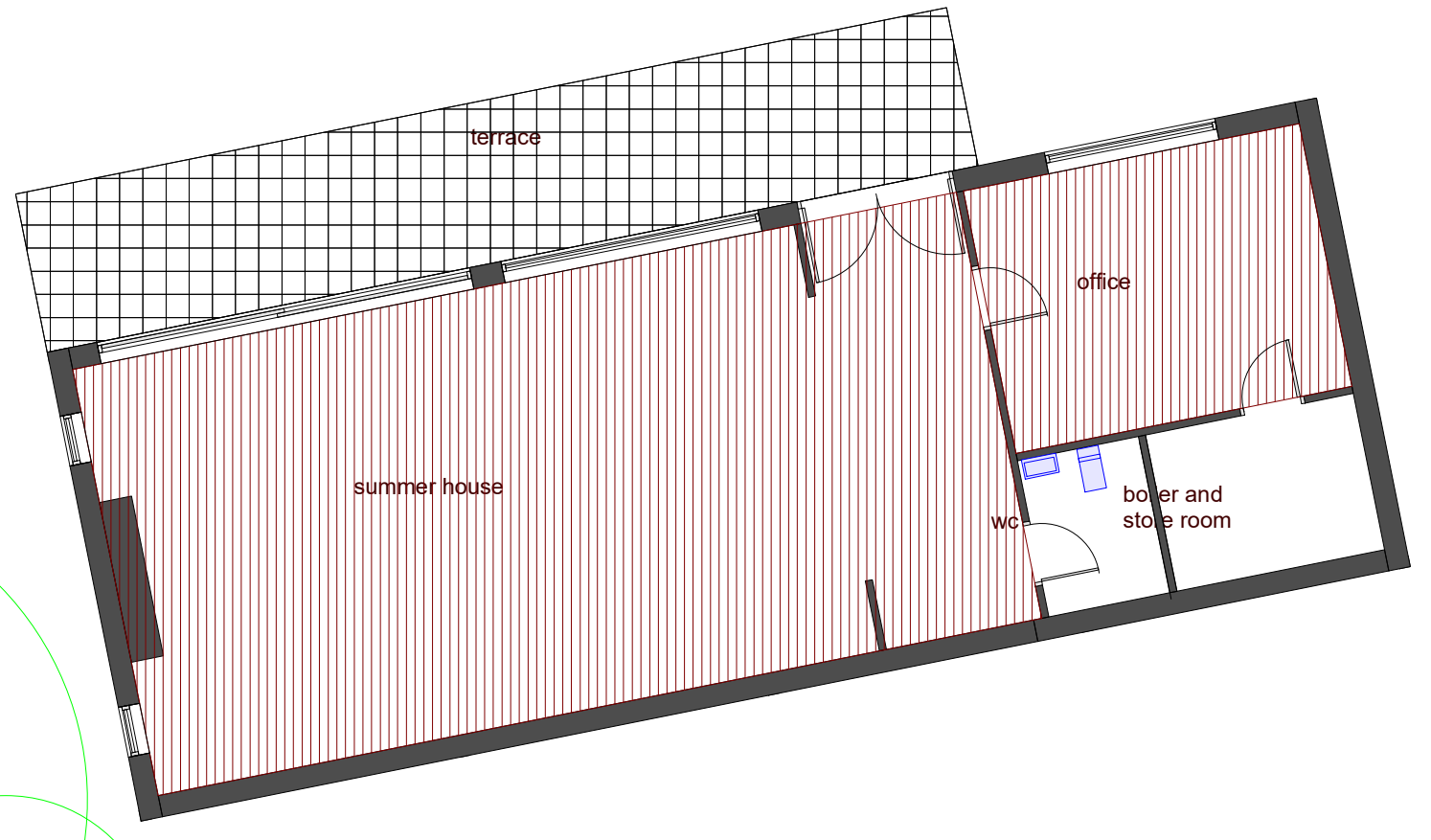
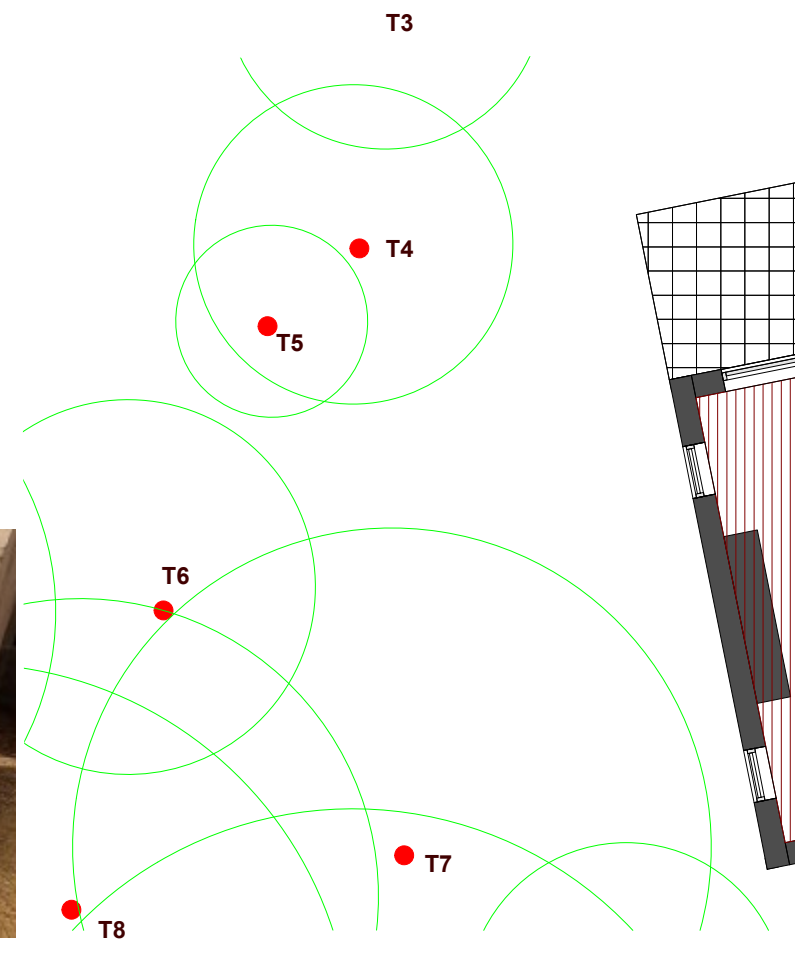
example of oak corner post with specialist brick dwarf wall on brickwork to match the existing dwelling



horizontal shiplap boarding to have black stain



treated oak posts - 150 x 150



floor layout

proposed summer house - scale 1:100@A3