

**From:** Simon Banks  
**Date:** 28 December 2020 at 12:16:17 GMT  
**To:** Hilary Saunders <h.saunders@northyorkmoors.org.uk>  
**Subject:** RE: Whitby seafoods planting scheme

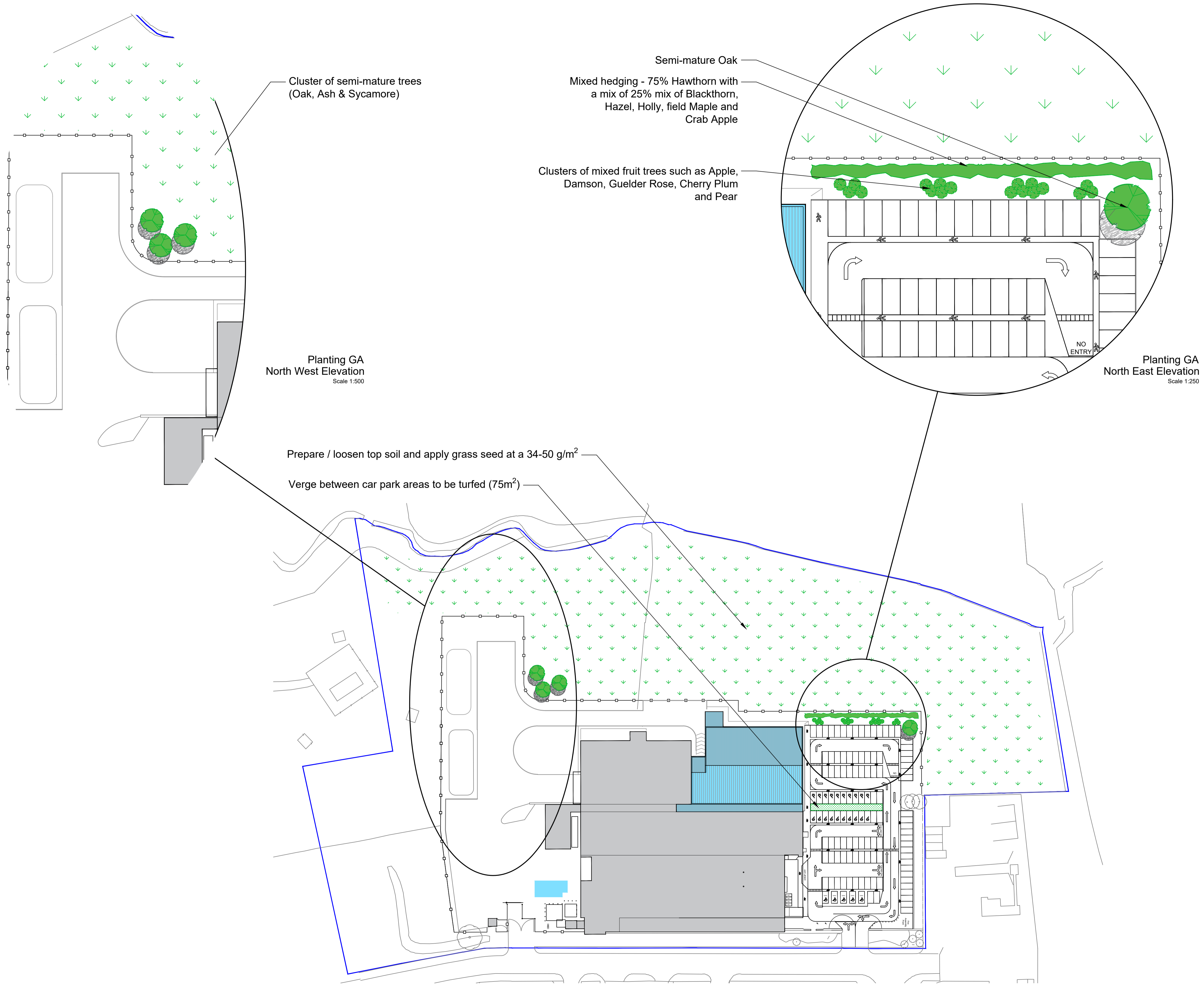
Hilary

Please find attached the revised planting scheme for Whitby Seafoods. Following consultation with Whitby Seafoods, we have removed the screening to the North West elevation as they have long term plans for expansion along this and the North East elevations of the current site. Hopefully the revised proposals will meet with your approval.

Kind Regards

Simon

**Simon Banks** IEng MIET  
Director  
Celsius Consulting Ltd  
Carrwood Park, Selby Road, Leeds LS15 4LG  
Company Registration 10437153  
Phone Direct Dial Mobile  
Web [www.celsius-consulting.com](http://www.celsius-consulting.com) Email s



Cluster of semi-mature trees (Oak, Ash & Sycamore)

Semi-mature Oak  
 Mixed hedging - 75% Hawthorn with a mix of 25% mix of Blackthorn, Hazel, Holly, field Maple and Crab Apple

Clusters of mixed fruit trees such as Apple, Damson, Guelder Rose, Cherry Plum and Pear

Planting GA  
 North West Elevation  
 Scale 1:500

Planting GA  
 North East Elevation  
 Scale 1:250

Prepare / loosen top soil and apply grass seed at a 34-50 g/m<sup>2</sup>  
 Verge between car park areas to be turfed (75m<sup>2</sup>)

Site General Arrangement  
 Scale 1:750

Safety, Health and Environmental Information (SHE)		
In addition to the hazards/risks normally associated with the type of work detailed on this drawing, note the following significant residual risks and information.		
Risks listed here are not exhaustive Refer to project CDM Design Hazard Inventory		
It is assumed that all works will be carried out by a competent contractor working, where appropriate, to an approved method statement		
<b>CONSTRUCTION</b> • All protruding reinforcement, onto and into which employees could fall, shall be guarded to eliminate the hazard of impalement		
<b>OPERATION/MAINTENANCE</b> • For information relating to use, cleaning and maintenance see Health and Safety File		
<b>DEMOLITION/REMOVAL</b> • Prior to commencing any works refer to the Health and Safety File and the relevant Maintenance Manuals		
<b>ENVIRONMENT</b> • No unusual hazards/risks during construction phase • Refer to Health and Safety File and the relevant Maintenance Manuals for operation/maintenance/demolition/removal		

NYMNPA  
 04/01/2021

A Dec20 Revised scheme following planning consultation

REV	DATE	DESCRIPTION
CLIENT: Whitby Seafoods Ltd Fairfield Way Whitby North Yorkshire YO22 4PU		

PROJECT TITLE:  
New Warehouse

DRAWING TITLE:  
Soft landscaping proposals



Celsius Consulting Ltd  
 Carrwood Park  
 Leeds  
 LS15 4LG  
 www.celsius-consulting.com

DRAWN BY SDB	DATE Sept 2020	SCALE 1:750
CHECKED BY	DATE	1:500
		1:250

DRAWING NO. 10002-A-100-041	REVISION A
--------------------------------	---------------

THIS DRAWING OR INFORMATION CONTAINED HEREIN MUST NOT BE REPRODUCED WITHOUT WRITTEN PERMISSION. © Copyright Celsius Consulting 2020.