

---

**From:** John Long  
**Sent:** 26 January 2021 14:00  
**To:** Hilary Saunders  
**Subject:** RE: Esk View RMs

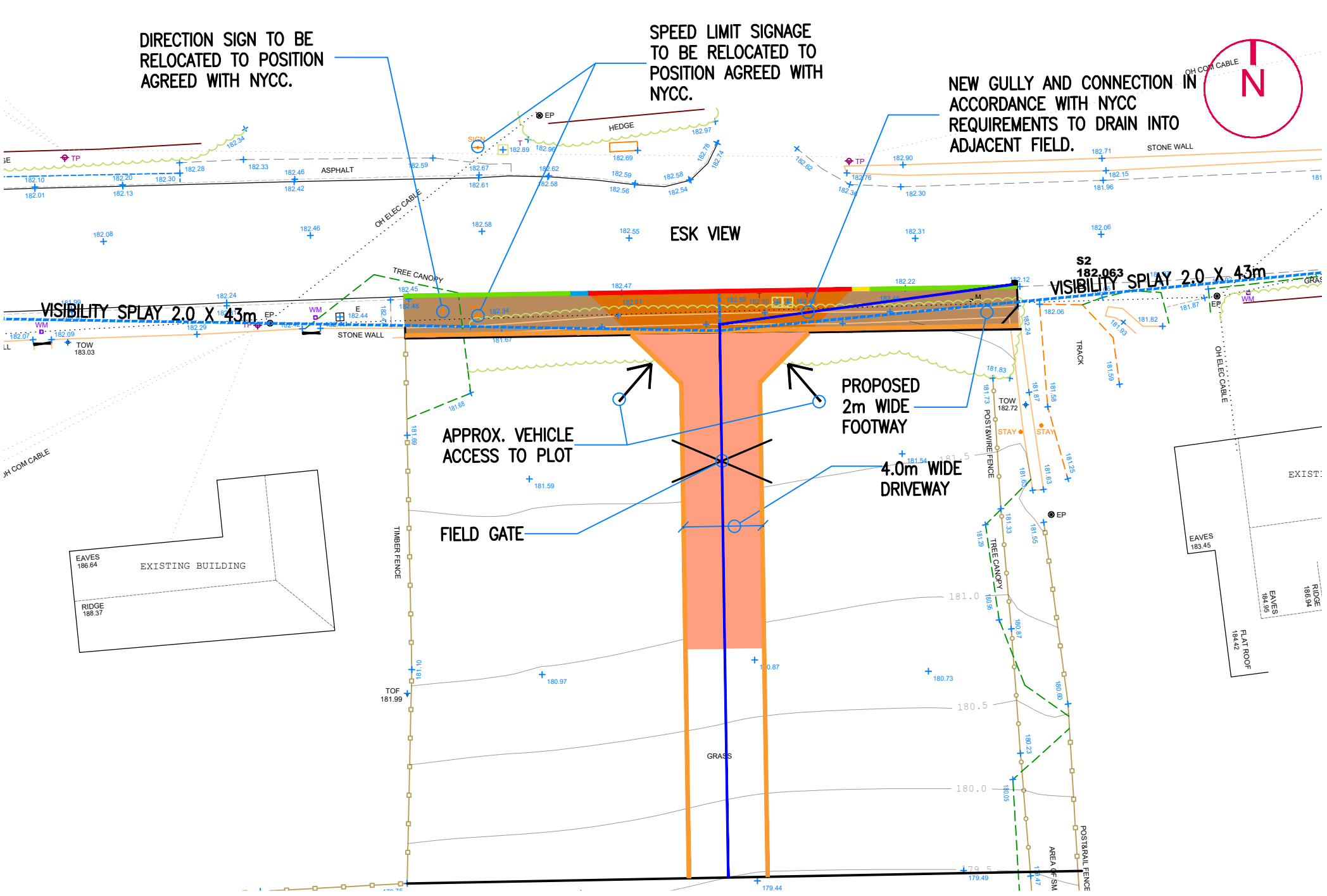
Hi Hilary

Please find attached the revised Esk View Access drawing with the proposed footway shown in a different colour along the frontage. The 3 coloured elements are: 1. Driveway construction at its junction with the highway; 2. Either side of this is the Proposed Footway on the frontage only (2m wide); 3. Private section of driveway to serve the 2 plots at the front and field access (4m wide with no footway).

Thanks

John

John Long



- HB2 KERB**  
125mm x 255mm PCC HALF BATTER KERB ON CONCRETE BED (GRADE ST2), 275mm WIDE x 150mm DEEP, WITH A 150mm WIDE HAUNCH BROUGHT UP TO WITHIN 75mm OF THE TOP OF THE KERB, 100mm KERB FACE- BS EN 1340
- DC KERB**  
125mm x 175mm PCC HALF BATTER KERB ON CONCRETE BED (GRADE ST2), 275mm WIDE x 150mm DEEP, WITH A 150mm WIDE HAUNCH BROUGHT UP TO WITHIN 75mm OF THE TOP OF THE KERB, 25mm KERB FACE- BS EN 1340
- EDGING PIN KERB**  
50mm x 150mm PCC FLAT TOP EDGING ON CONCRETE BED (GRADE ST2), 200mm WIDE x 125mm DEEP, WITH A 75mm WIDE HAUNCH BROUGHT UP TO WITHIN 75mm OF THE TOP OF THE EDGING- BS EN 1340
- DK**  
125mm X 255mm BN TO LEFT HAND, WITH A 150mm WIDE HAUNCH BROUGHT UP TO WITHIN 75mm OF THE TOP OF THE KERB- BS EN 1340
- DK**  
125mm X 255mm BN TO RIGHT HAND, WITH A 150mm WIDE HAUNCH BROUGHT UPTO WITHIN 75mm OF THE TOP OF THE KERB- BS EN 1340

**PROPOSED DRIVEWAY CONSTRUCTION (NYCC STANDARD DETAIL E6W)**  
**SURFACE COURSE** 25mm THICK DBM WITH 10mm N/S AGGREGATE  
**BINDER COURSE** 70mm THICK DBM WITH 20mm N/S AGGREGATE  
**SUB BASE** 150mm OF TYPE 1 SUB BASE MATERIAL

**PROPOSED DRIVEWAY CONSTRUCTION**  
**SURFACE COURSE** 25mm THICK DBM WITH 10mm N/S AGGREGATE  
**BINDER COURSE** 70mm THICK DBM WITH 20mm N/S AGGREGATE  
**SUB BASE** 150mm OF TYPE 1 SUB BASE MATERIAL

**PROPOSED FOOTWAY CONSTRUCTION – MIN 3% CROSSFALL**  
**SURFACE COURSE** 20mm OF 6mm NS DENSE BITUMEN MACADAM  
**BINDER COURSE** 50mm OF 20mm NS DENSE BITUMEN MACADAM  
**SUB BASE** 150mm OF 40mm NS CRUSHED STONE BASE

**NOTES**

1. THIS DRAWING IS SUBJECT TO FULL CDM COMPLIANCE, STATUTORY UNDERTAKERS SEARCH/DIVERSION REQUIREMENTS, HIGHWAY DRAINAGE PROVISION, LAND OWNERSHIP AND LOCAL AUTHORITY APPROVAL. NO DEVIATION FROM THE DRAWING SHOWN IS ALLOWED WITHOUT WRITTEN PERMISSION
2. REFER TO VIA SOLUTIONS PROJECT SPECIFIC DESIGN RISK ASSESSMENT (DRA)
3. IT IS ASSUMED THAT ALL WORKS WILL BE CARRIED OUT BY A COMPETENT CONTRACTOR WORKING WHERE APPROPRIATE TO AN APPROVED METHOD STATEMENT / LEGAL AGREEMENT
4. GRADIENT OF NEW ACCESS DRIVE NOT TO EXCEED 1 IN 10 FOR FIRST 6m FROM BACK OF FOOTWAY

REV.	AMENDMENTS	DATE
A	GENERAL DETAILS	07/10/20
B	GENERAL DETAILS	26/01/21



NYMNP  
26/01/2021

AMENDED

PROPOSED RESIDENTIAL DEVELOPMENT

LAND EAST OF 12 ESK VIEW, EGTON

ACCESS DESIGN

SCALE: 1:250 @A3

DATE: JANUARY 2021

DRAWING No: 2008004. REV B