

FAO Rob Smith  
North York Moors National Park Authority  
The Old Vicarage  
Bondgate  
Helmsley  
York  
YO62 5BP

NYMNP

20/01/2021

**Date:** 20 January 2021

**Our ref:** 50303/04/HS/JCx/16877357v2

**Your ref:** NYM/2017/0505/MEIA

Dear Rob

**North York Moors: Woodsmith Mine - Application to Partially Discharge Conditions 4, 18, 34, 46, 47, 52, 57, 60, 64, 68, 70, 71, 73, 76, 79, 91, 92, 93, 94, 95 & 97 of Planning Permission NYM/2017/0505/MEIA**

On behalf of our client, Anglo American Woodsmith Limited, we are pleased to submit this application for limited and partial approval of Planning Conditions 4, 18, 34, 46, 47, 52, 57, 60, 64, 68, 70, 71, 73, 76, 79, 91, 92, 93, 94, 95 & 97 of Planning Permission NYM/2017/0505/MEIA.

The Project will be delivered in a series of Phases. This application relates solely to the Phase 13 works at the Woodsmith Mine.

## **Background**

*On 19 October 2015, the NYMNP granted planning permission for the “Winning and working of polyhalite by underground methods including the construction of a minehead at Dove's Nest Farm involving access, maintenance and ventilation shafts, the landforming of associated spoil, the construction of buildings, access roads, car parking and helicopter landing site, attenuation ponds, landscaping, restoration and aftercare and associated works. In addition, the construction of an underground tunnel between Doves Nest Farm and land at Wilton that links to the mine below ground, comprising 1 no. shaft at Doves Nest Farm, 3 no. intermediate access shaft sites, each with associated landforming of associated spoil, the construction of buildings, access roads and car parking, landscaping, restoration and aftercare, and the construction of a tunnel portal at Wilton comprising buildings, landforming of spoil and associated works” (Council Reference NYM/2014/0676/MEIA).*

NYM/2014/0676/MEIA was approved subject to 95 planning conditions and a Section 106 Agreement.

On 6 February 2017, the NYMNP granted planning permission for the “Variation of Condition 5 of planning permission NYM/2014/0676/MEIA to allow minor material amendments relating to that part of the development at the Woodsmith Mine site (formerly known as Doves Nest Farm and Haxby Plantation), including; re-design of foreshafts and shaft construction methodology, changes to building layout and shaft access arrangements, revisions to construction and operational shaft platform levels, revisions to location and layout of surface water attenuation ponds, revisions to groundwater management

*arrangements and amendments to internal access arrangements”* (Council Reference NYM/2017/0505/MEIA).

The amended scheme (NYM/2017/0505/MEIA) was approved subject to 98 planning conditions and a deed of variation to the originally approved Section 106 Agreement.

### **Phase 13 Works**

Phase 13 covers off the following proposed works at the Woodsmith Mine:

- Establishment and use of temporary laydown area for storage of segments;
- Construction and use of secondary secure storage unit;
- Extension to warehouse facility;
- Installation of siltbuster chemical store;
- Installation of weatherproof storage shelter in MTS maintenance area;
- Installation of bollard lighting between the welfare car park and the security cabin and;
- Extension to welfare building canopy.

### **Planning Conditions 52, 57, 70, 73 and 95**

Anglo American is committed to implementing the mitigation, monitoring and reporting measures developed in previous phases, throughout Phase 13 for the following conditions:

- NYM-52 Protected Species Management Plans;
- NYM-57 Landscape and Ecological Management Plan;
- NYM-70 Arboricultural Method Statement;
- NYM-73 Woodland Management Plan; and
- NYM-95 Archaeological Written Scheme of Investigation;

Anglo American is not intending to re-submit the documentation for the above conditions as they have already been approved and implemented in full for the duration of previous phases and will continue to be implemented insofar as they relate to Phase 13.

### **Partial Discharge**

Anglo American acknowledges that limited and partial approval of Planning Conditions 4, 18, 34, 46, 47, 52, 57, 60, 64, 68, 70, 71, 73, 76, 79, 91, 92, 93, 94, 95 & 97 when given, does not constitute permission to undertake works other than those described, including any works at Ladycross Plantation, and that such works remain subject to the approval of other conditions.

This approach has been discussed and agreed with your Planning Team and is consistent with the approach taken on previous phases of the Project.

### **Application Submission**

The application was submitted via the planning portal on 19 January 2021 (reference PP-09398300) and comprises the following documentation:

- Completed application form;
- Application drawings – Please see Appendix 1;

- Supporting Documents – Please see Appendix 1.

The requisite planning application fee of £116 has been paid online by credit card.

**Conclusion**

We trust that this application provides you with the necessary information to be able to partially discharge the above conditions to cover Phase 13 works at Woodsmith Mine. However, should you require any further information, please do not hesitate to contact me.

Yours sincerely

Associate Director



**Appendix 1 : Supporting Documents**



**Table 1: List of Supporting Documents**

<b>Condition No</b>	<b>Description</b>	<b>Document Name / Number</b>	<b>Further Details</b>
N/A	N/A	Listed Plans	<p>40-ARI-WS-7100-CI-22-01075 - Woodsmith Mine Construction Phase 13 Masterplan</p> <p>40-ARI-WS-7100-CI-22-01076- Woodsmith Mine Construction Phase 13 Planning Phases Comparison General Arrangement</p> <p>40-ARI-WS-7100-CI-22-01077 – Woodsmith Mine Construction Phase 13 Drainage General Arrangement</p> <p>40-STS-WS-2100-PA-02-30104 – Woodsmith Mine Segment Storage Area General Arrangement</p>
<b>4</b>	Phasing Plan	40-ARI-WS-7100-CI-22-01076 - Woodsmith Mine Construction Phase 13 Planning Phases Comparison General Arrangement	40-ARI-WS-7100-CI-22-01075 - Woodsmith Mine Construction Phase 13 Masterplan
<b>18</b>	Noise & Vibration	Phase 13 Woodsmith Mine Noise and Vibration Management Plan - 40-RHD-WS-70-EN-PL-0048	<p>Phase 13 – Woodsmith Mine Construction Environmental Management Plan – 40-RHD-WS-70-EN-PL-0046</p> <p>Phase 13 Construction Method Statement – NYMNPA 94 – 40-SMP-WS-7100-PA-MS-00012</p>
<b>34</b>	Construction Traffic Management Plan	Phase 13 Woodsmith Mine Construction Traffic Management Plan - 40-RHD-WS-70-EN-PL-0047	Phase 4 CTMP (reference 40-RHD-WS-70-CI-PL-0004)
<b>46</b>	GW / SW Monitoring Scheme	Phase 13 Works at Woodsmith Mine, North Yorkshire Hydrogeological Risk Assessment – 40-FWS-WS-70-WM-RA-0015	N/A

<b>46</b>	Hydrogeological Risk Assessment	Phase 13 Works at Woodsmith Mine, North Yorkshire Hydrogeological Risk Assessment – 40-FWS-WS-70-WM-RA-0015	N/A
<b>46</b>	Remedial Action Plan	Phase 13 Works at Woodsmith Mine, North Yorkshire Hydrogeological Risk Assessment – 40-FWS-WS-70-WM-RA-0015	N/A
<b>47</b>	Groundwater Management Scheme	Phase 11 Works at Woodsmith Mine, North Yorkshire – Groundwater Management Scheme – 40-FWS-WS-70-WM-PL-0022	The Phase 11 Groundwater Management scheme remains applicable to Phase 13.
<b>52</b>	Protected Species Management Plan	Refer to CEMP (Condition 93)	Phase 11 – Woodsmith Mine Protected Species Management Plan – Bats – 40-RHD-WS-70-EN-PL-0043
<b>57</b>	Landscape & Ecological Management Plan	Refer to CEMP (Condition 93)	N/A
<b>60</b>	Surface Water Drainage	Woodsmith Mine – Phase 12 Works – NYMNPA 60 and 79 Surface Water Drainage Scheme – 40-ARI-WS-7100-CI-RP-01008	<p>The drainage strategy, calculations and surface water management plan described in the Phase 12 Surface Water Drainage Scheme are still applicable for the Phase 13 works. The Phase 13 Surface Water Drainage Scheme is shown on the general arrangement drawing 40-ARI-WS-7100-CI-22-01077. The proposed works do not impact or amend the surface water drainage design submitted as part of the Phase 12 submission.</p> <p>The proposed temporary laydown area for the storage of segments is located in the same area as the previously proposed laydown area included in the Phase 12 submission. The Phase 13</p>

			<p>segment storage area has the same drained area as the Phase 12 laydown area and therefore its incorporation does not result in any increase in the overall drained site area. The platform retains the same surface drainage features as described in the Phase 12 submission, (including a series of filter drains) and therefore its incorporation does not adversely impact the surface water drainage design and calculations previously submitted for the Phase 12 scheme.</p> <p>The construction and use of the secondary secure storage unit will occupy a very small area to the north of the previously approved secure storage unit. Any surface water drainage from the limited hardstanding areas will outfall directly into the site attenuation ponds and, due to their limited size, will not impact on the overall surface water drainage strategy.</p> <p>The remaining scope items are located on areas of the existing hardstanding platforms which were constructed during previous planning phases and are drained as part of the current surface water drainage design and therefore require no alterations to the existing provision or strategy.</p>
<b>64</b>	Temporary Fencing	Refer to Construction Method Statement (Condition 94)	40-ARI-WS-7100-CI-22-01075 - Woodsmith Mine Construction Phase 13 Masterplan
<b>68</b>	Temporary Structures	Refer to Construction Method Statement (Condition 94)	Listed plans.
<b>70</b>	Arboricultural Method Statement	Refer to CEMP (Condition 93)	N/A
<b>71</b>	Hard & Soft Landscaping	40-ARI-WS-7100-CI-22-01078 - Woodsmith Mine	N/A

		Construction Phase 13 Hard and Soft Landscaping Plan	
73	Woodland Management Plan	N/A	No trees are to be removed as part of this phase.
76	Soil Management Plan	Refer to CEMP (Condition 93)	Woodsmith Mine – Phase 11 Works – NYMNP 76 Soil Management Plan - 40-ARI-WS-7100-CI-PL-01000
79	Surface Water Drainage	Woodsmith Mine – Phase 12 Works – NYMNP 60 and 79 Surface Water Drainage Scheme – 40-ARI-WS-7100-CI-RP-01008	See Condition 60 above
91	Emissions	N/A	<p>Condition NYMNP-91 states that emissions associated with construction works at Woodsmith Mine must lead to nutrient nitrogen and acid deposition no greater than that reported in the Environmental Statement and Supplementary Environmental Information (SEI) Report on which the planning permission was based (reference NYM/2017/0505/MEIA). The levels of deposition detailed in the SEI were based upon emissions from 18MW of diesel power generation fitted with Selective Catalytic Reduction (SCR) technology, the blasting of three shafts (one blast per shaft, per day) and emissions from onsite mobile plant.</p> <p>Anglo American obtained planning permission to provide onsite power via an 11kV electrical supply (reference NYM/2018/0181/NM) and Liquefied Natural Gas (LNG) generators (reference NYM/2018/0662/NM), removing the requirement for diesel generation. The nutrient nitrogen and acid deposition associated with the LNG generators was significantly lower than that predicted using the diesel generators.</p> <p>In Phase 13, the LNG generators and</p>

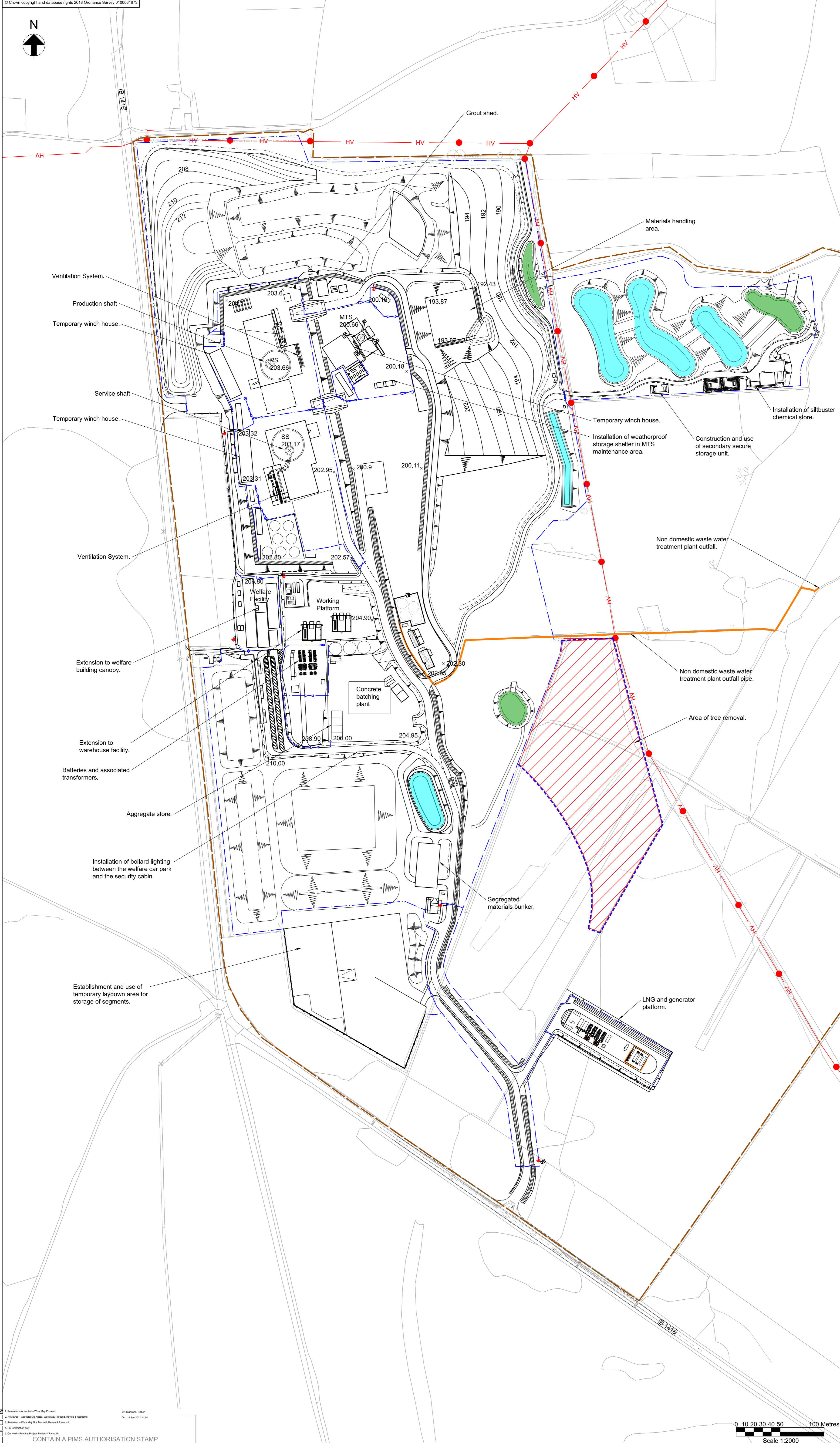
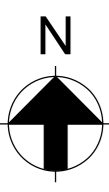
			<p>11kV supply will be in use. Some small portable generators may be required to power lighting on the temporary segment laydown area, which will be replaced by mains power as soon as practicable. Emissions from these small generators, used for a short period of time, are likely to have a negligible effect on nutrient nitrogen and acid deposition. Blasting operations, approved under Phase 11, will continue to occur on only the MTS shaft, using the same type and quantity of explosives per blast as considered in the SEI Report. Total emissions from blasting would therefore be reduced by approximately one third compared with the scenario modelling in the SEI. Emissions from onsite mobile plant are not expected to be of any greater magnitude than previously considered.</p> <p>Given the above, emissions associated with the LNG generators, temporary use of small portable generators, blasting, and plant which will occur concurrently during Phase 13 would result in nutrient nitrogen and acid deposition of a lower magnitude than reported in the SEI, due to the improved generator technology, the reduction in shafts to be blasted and the use of an 11kV electrical supply.</p>
92	CVPMP	Phase 7 – Woodsmith Mine Construction Vehicle and Plant Management Plan – 40-RHD-WS-70-CI-PL-0012	<p>A Construction Vehicle and Plant Management Plan (CVPMP) (reference 40-RHD-WS-70-CI-PL-0012) was submitted to discharge condition NYMNPA-92 as part of the Phase 7 Works.</p> <p>The plant required for the Phase 13 Works will be similar in nature to that considered during Phase 7 and in no greater number. Therefore particulate emissions from plant used during Phase 13 are expected to be of no greater magnitude than that presented in the Phase 7 CVPMP. Dust and particulate matter generated during the ongoing</p>

			<p>blasting will be filtered and captured via the ventilation system which will be operated for a period of approximately 30 minutes following each blast. This will ensure minimal release of particulate matter to the atmosphere.</p> <p>Emissions from vehicle movements were considered in the Phase 7 CVPMP, and were based on the maximum permissible light and heavy goods vehicle movements to and from Woodsmith Mine. Whilst the number of vehicles travelling to and from Woodsmith Mine has temporarily increased due to COVID-19 restrictions, these vehicles would otherwise be using the Park and Ride facilities, and therefore there is not expected to be a significant change in total particulate emissions within the local area. As such, the findings of the Phase 7 CVPMP are considered to be applicable for Phase 13.</p>
<b>93</b>	CEMP	Phase 13 – Woodsmith Mine Construction Environmental Management Plan – 40-RHD-WS-70-EN-PL-0046	<p>Phase 13 CMS (reference 40-SMP-WS-7100-PA-MS-00012)</p> <p>Phase 3 CEMP (reference 40-RHD-WS-70-EN-PL-0014)</p> <p>Phase 3 Surface Water Drainage Scheme (reference 40-ARI-WS-71-PA-RP-1050)</p> <p>Protected Species Management Plans:</p> <p>40-RHD-WS-70-EN-PL-0010 Ph3 PSMP for Reptiles;</p> <p>40-RHD-WS-70-EN-PL-0042 Ph11 PSMP for Badgers;</p> <p>40-RHD-WS-70-EN-PL-0012 Ph3 PSMP for Birds; and</p> <p>40-RHD-WS-70-EN-PL-0043 Ph11 PSMP for Bats.</p>
<b>94</b>	Construction Method Statement	Phase 13 Construction Method Statement –	<p>Listed plans.</p> <p>Phase 13 – Woodsmith Mine</p>

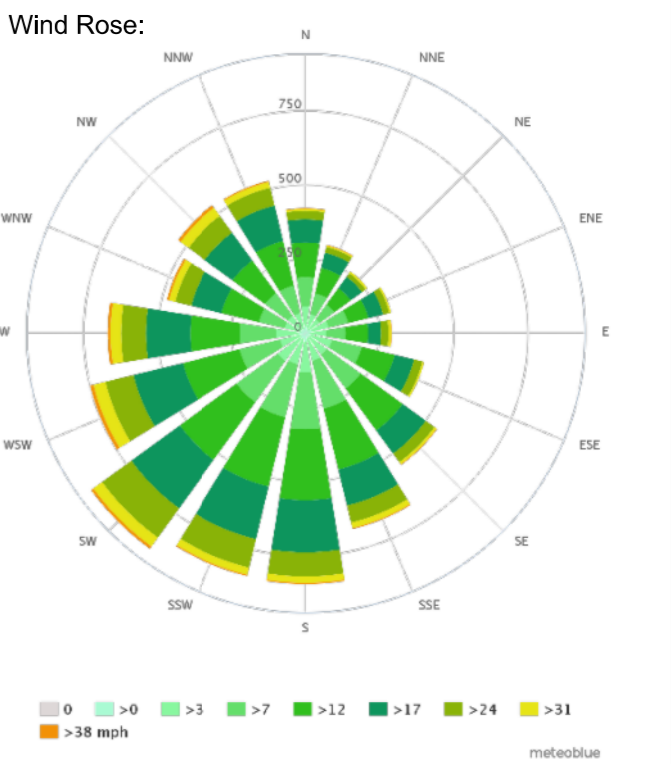
		NYMNP 94 – 40-SMP-WS-7100- PA-MS-00012	<p>Construction Traffic Management Plan 40-RHD-WS-70-EN-PL-0047</p> <p>Phase 12 - Woodsmith Mine Construction Traffic Management Plan 40-RHD-WS-70-CI-PL-0016</p> <p>Phase 13 – Woodsmith Mine Construction Environmental Management Plan – 40-RHD-WS-70- EN-PL-0046</p> <p>Phase 11 – Woodsmith Mine Soil Management Plan - 40-ARI-WS-7100- CI-PL-01000</p>
<b>95</b>	Written Scheme of Investigation	Refer to CEMP (Condition 93)	N/A

**\* As agreed, documents from previous phases (where they remain unchanged in relation to Phase 13) have not been resubmitted with this application**





- Key:**
- Land ownership boundary
  - Construction phase security fence / inner site access control fence
  - 2.4m high palisade fence
  - Topographical survey
  - Proposed layout
  - 3m high environmental barrier
  - Proposed drainage ditch
  - Surface water drainage attenuation pond
  - Surface water drainage wetland
  - Telecommunication mast
  - Temporary Heras fencing
- Key to utilities:**
- HV Existing Northern Powergrid electrical apparatus



0	14/01/21	JB	CW	CW
For Planning				
B	21/12/20	KK	CW	CW
For comment				
A	16/12/20	JB	CW	CW
For comment				
REV	DATE	BY	CHKD	APPD



Drawing Title: **Woodsmith Mine Construction Phase 13 Masterplan**

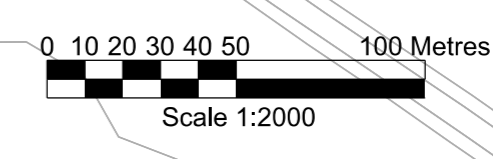
SCALE: 1:2000  
Job No: **253285**



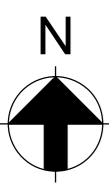
DRG No: **40-ARI-WS-7100-CI-22-01075** REV **0**

1. Reviewed - Accepted - Work May Proceed  
 2. Reviewed - Accepted - Work May Proceed - Review & Resubmit  
 3. Reviewed - Work May Not Proceed - Review & Resubmit  
 4. For Information Only  
 5. On Hold - Pending Approval - Review & Resubmit

CONTAIN A PIMS AUTHORISATION STAMP  
 THIS DRAWING IS CONFIDENTIAL AND THE PROPERTY OF ANGLO AMERICAN PLC IT MUST NOT BE COPIED WITHOUT WRITTEN CONSENT







- Key:
- Previous Planning Phases
  - Phase 13

Ventilation system.

Production shaft

Temporary winch house.

Temporary winch house.

Service shaft

Ventilation system.

Extension to welfare building canopy.

Extension to warehouse facility.

Installation of bollard lighting between the welfare car park and the security cabin.

Establishment and use of temporary laydown area for storage of segments.

MTS shaft.

Temporary winch house.

Installation of siltbuster chemical store.

Construction and use of secondary secure storage unit.

LNG and generator platform.

0	14/01/21	JB	CW	CW
For Planning				
B	21/12/20	KK	CW	CW
For comment				
A	16/12/20	JB	CW	CW
For comment				
REV	DATE	BY	CHKD	APPD



Anglo American Woodsmith Project Ltd  
 Resolution House | Lake View | Scarborough | YO11 3ZB | North Yorkshire  
 T: +44 (0) 1723 470010 | W: uk.angloamerican.com

Drawing Title: Woodsmith Mine Site  
 Construction Phase 13  
 Planning Phases Comparison  
 General Arrangement

SCALE: 1:2000

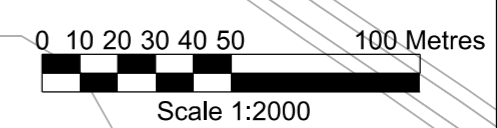
Job No:

253285

**ARUP**

DRG No: 40-ARI-WS-7100-CI-22-01076

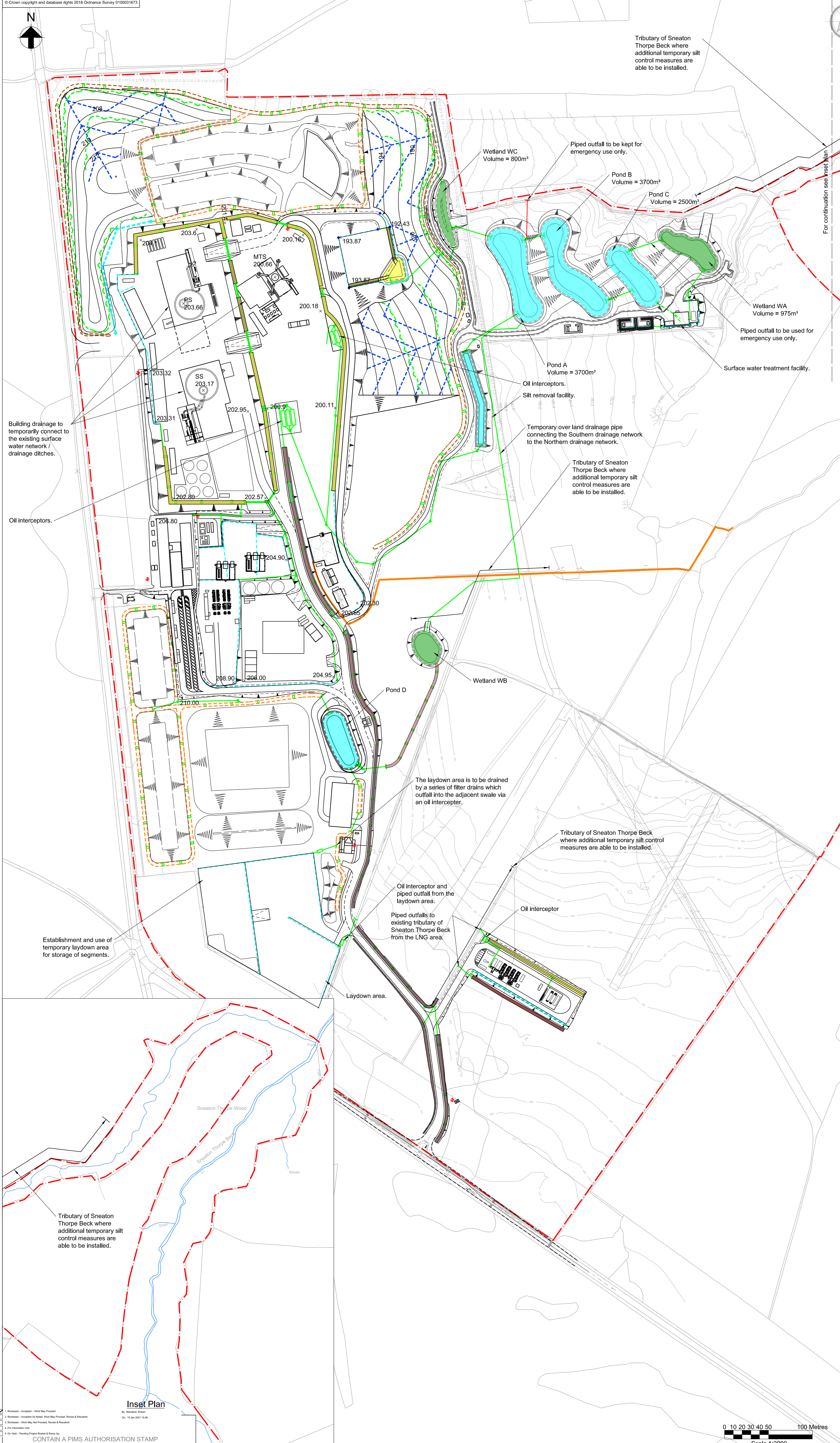
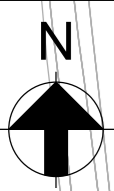
REV 0



Reviewed - Accepted - Work May Proceed  
 Reviewed - Accepted - Work May Proceed - Review & Resubmit  
 Reviewed - Work May Not Proceed - Review & Resubmit  
 For Information Only  
 On Hold - Pending Final Review & Approvals  
 CONTAIN A PIMS AUTHORIZATION STAMP  
 THIS DRAWING IS CONFIDENTIAL AND THE PROPERTY OF ANGLO AMERICAN PLC IT MUST NOT BE COPIED WITHOUT WRITTEN CONSENT

By: Steven, Robert  
 On: 15 Jan 2021 15:08





- Notes:
- This drawing shows the proposed surface water drainage network for the Phase 13 works.
- Key:
- Land Ownership Boundary
  - Proposed General Arrangement layout
  - Surface water drainage attenuation pond
  - Wetland
  - Existing watercourses / ditch
  - Manhole and carrier pipe
  - Swale
  - Check dam
  - Silt fence
  - Ditch
  - Ditch with impermeable liner
  - Inlet / outlet headwall
  - Filter drain
  - Earthworks herringbone filter drain
  - Non domestic waste water discharge pipe

For continuation see inset plan

Building drainage to temporarily connect to the existing surface water network / drainage ditches.

Oil interceptors.

Establishment and use of temporary laydown area for storage of segments.

Wetland WC  
Volume = 800m<sup>3</sup>

Piped outfall to be kept for emergency use only.

Pond B  
Volume = 3700m<sup>3</sup>

Pond C  
Volume = 2500m<sup>3</sup>

Wetland WA  
Volume = 975m<sup>3</sup>

Piped outfall to be used for emergency use only.

Surface water treatment facility.

Pond A  
Volume = 3700m<sup>3</sup>

Oil interceptors.  
Silt removal facility.

Temporary over land drainage pipe connecting the Southern drainage network to the Northern drainage network.

Tributary of Sneaton Thorpe Beck where additional temporary silt control measures are able to be installed.

Wetland WB

Pond D

The laydown area is to be drained by a series of filter drains which outfall into the adjacent swale via an oil interceptor.

Tributary of Sneaton Thorpe Beck where additional temporary silt control measures are able to be installed.

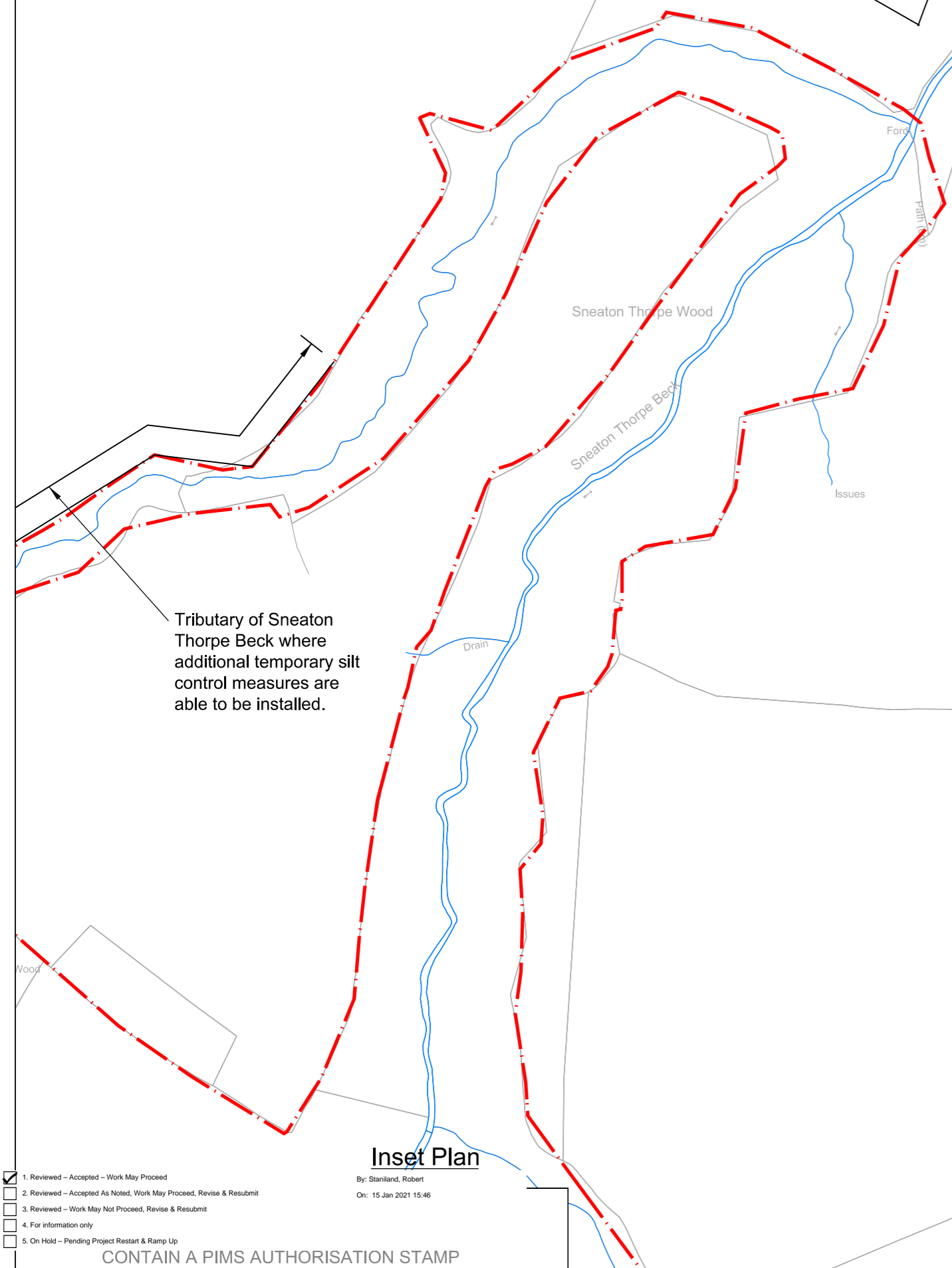
Oil interceptor and piped outfall from the laydown area.

Piped outfalls to existing tributary of Sneaton Thorpe Beck from the LNG area.

Oil interceptor

Laydown area.

Tributary of Sneaton Thorpe Beck where additional temporary silt control measures are able to be installed.



**Inset Plan**

1. Reviewed - Accepted - Work May Proceed  
2. Reviewed - Accepted - Work May Proceed - Review & Resubmit  
3. Reviewed - Work May Not Proceed - Review & Resubmit  
4. For Information Only  
5. On Hold - Pending Approval - Review & Resubmit

By: Steve Ford, Robert  
On: 15 Jan 2021 15:48

CONTAIN A PIMS AUTHORIZATION STAMP

THIS DRAWING IS CONFIDENTIAL AND THE PROPERTY OF ANGLO AMERICAN PLC. IT MUST NOT BE COPIED WITHOUT WRITTEN CONSENT.

0	14/01/21	JB	CW	CW
For Planning				
B	21/12/20	KK	CW	CW
For comment				
A	16/12/20	JB	CW	CW
For comment				
REV	DATE	BY	CHKD	APPD



Drawing Title: Woodsmith Mine Site Construction Phase 13 Drainage General Arrangement

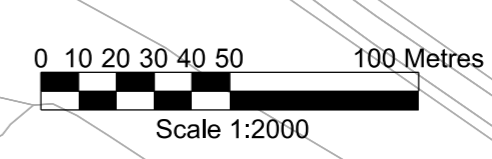
SCALE: 1:2000

Job No: 253285

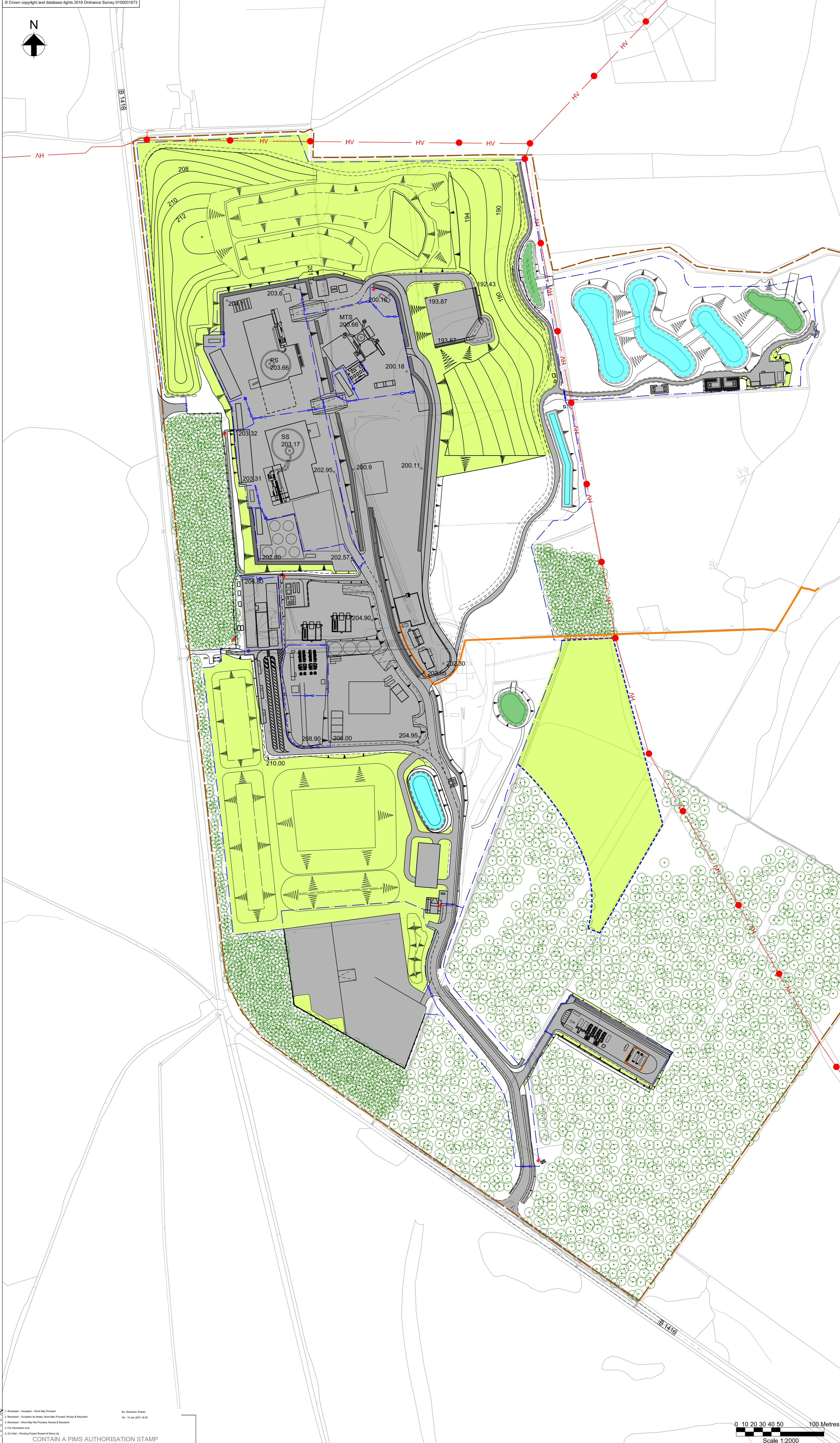
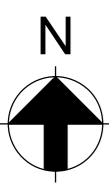


DRG No: 40-ARI-WS-7100-CI-22-01077

REV 0







1	14/01/21	JB	CW	CW
For Planning				
0	21/12/20	KK	CW	CW
Issue				
A	16/12/20	JB	CW	CW
For comment				
REV	DATE	BY	CHKD	APPD



Drawing Title: **Woodsmith Mine Construction Phase 13 Hard and Soft Landscaping Plan**

SCALE: 1:2000  
 Job No: **253285**



DRG No: **40-ARI-WS-7100-CI-22-01078** REV **1**

THIS DRAWING IS CONFIDENTIAL AND THE PROPERTY OF ANGLO AMERICAN PLC. IT MUST NOT BE COPIED WITHOUT WRITTEN CONSENT.

CONTAIN A PIMS AUTHORISATION STAMP

By: **Stewart, Robert**  
 On: **15 Jan 2021 16:33**

1. Reviewed - Accepted - Work May Proceed  
 2. Reviewed - Accepted - Work May Proceed - Review & Resubmit  
 3. Reviewed - Work May Not Proceed - Review & Resubmit  
 4. For Information Only  
 5. On Hold - Pending Project Restart & Re-Plan

