

Discharge of Conditions

Listed Building Consent ref NYM/2021/0034.LB

Site Address – Old School House, Thorpe Green Bank, Fylingthorpe, YO22 4TU

Applicants – Mr James Donaldson

Condition 3

Exterior pointing:

We will use Lime stuff Medium Stuff - Lime Putty Mortar – mix 1:3

Colour -oatmeal

Condition 4

Internal plasterwork:

A suitable plaster repair mix would be Limestuff non-hydraulic - Coarse Stuff lime render is made on site using our **CHALK LIME PUTTY** and a blend of grit sand and **WAREHAM WASHED SAND**. It is supplied as a ready mix, meaning it is easy to use straight from the bag. We add a good deal of ox or goat hair added.

This base-coat will be applied in two coats no more than 3/4 inch thick (and more than two if required to bring to within a few millimetres of the finished wall line. A light spray of water on the area to be plastered will be used to control suction.

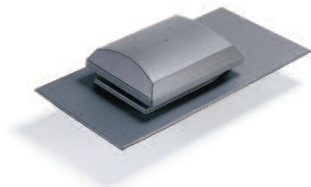
The final finish will be Limestuff Fine Stuff - Lime putty top coat plaster, a non-hydraulic Fine Stuff lime plaster is made using a 1:2 mix of our **MATURED LIME PUTTY** and **SILVER SAND** ideally (if it can be found) with white goat hair added, cut to half-inch lengths. It will be applied 3-5 mm thick.

The decorative paint will be limewash, prepared from quicklime, applied in two coats, with the last coat burnished, or polished during curing with a dry paint brush.

Condition 5

As noted on dwg 2454:6 Elevation as Proposed.

An in-line slate ventilator as illustrated below will be positioned in a rear facet of the spirelet so that it will not visible from ground level.



Glidvale G5 slate ventilator