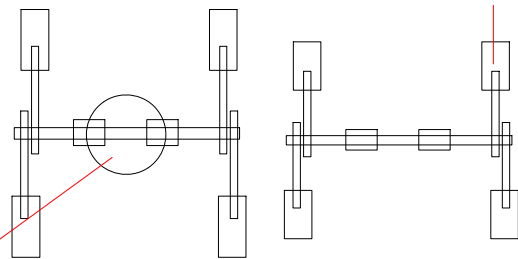


photographs of the site

Double Swing Frame (K-13D)

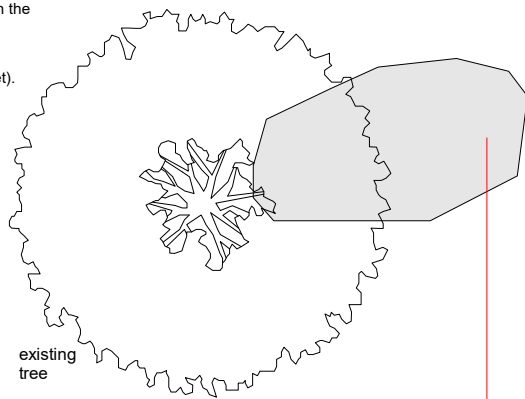
The Standard Double Swing Frame is 3.5m long, 2.2m wide and 2.73m high. The top pole is 14cm diameter with 12cm diameter frame legs, which are fitted with galvanised metal legs and are concreted into the ground. The timber is pressure-treated with non-arsenic preservative salts and impregnated with wax. The swing points are heavy duty stainless steel and the swings are at a minimum height of 40cm. Two Flat Swing Seats are included in the quote. The swings require an appropriate safety surface (3.5 x 7.0m) with a free space area of 8.0m x 6.0m. A Toddler Cradle Swing Seat (RT-CSS) is available as an alternative, if preferred (£135.00 + VAT per swing and chain set).



Basket Swing (CP-BS)

The Basket Swing is versatile for all ages and has been designed to take several young children, or a couple of adults, with a capacity to carry a tonne. It is ideally suited and is certificated for use by children and adults with special needs. Constructed with 12cm diameter, quarter-sawn timber legs and an 18cm diameter, machine-rounded top pole, the frame is 3.5m long by 2.8m wide by 2.7m high. All fittings are stainless steel and the 1.2m diameter basket is a heavy-duty galvanised steel ring cushioned and secured with steel-core multi-strand 16mm herculean net rope. The Basket and rope comes in Red and Blue, or all Black. Safety surfacing is required to meet EN 1177 standards (minimum safety surfacing area: 3.0m x 7.0m).

existing kiosk

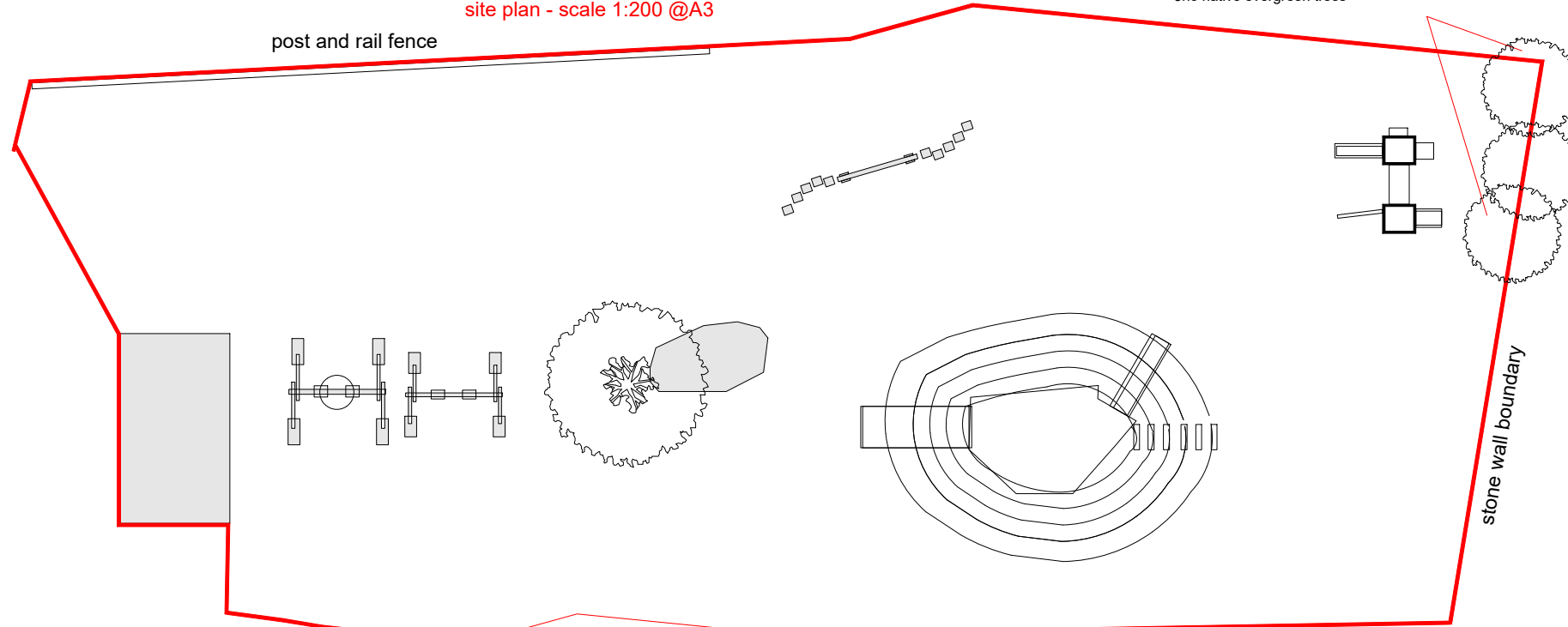


Sandpit Edging & Restoration (CP-BES)

This work will include the following:

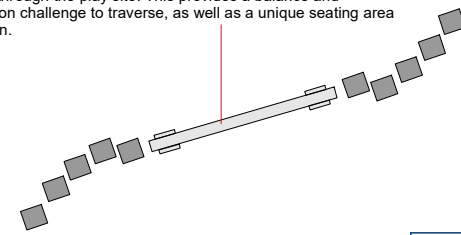
- Remove existing edging and stack neatly for disposal by The Grainary
- Supply and install new edging - approx. 19.2 linear metres - constructed from pressure-treated landscape grade Timber Sleeper Edging (2400mm x 100mm x 200mm) laid on end to a height of 200mm
- Edging will be capped to provide seating ledge on top, which will be constructed with CLS, graded C24 pressure-treated 195mm x 45mm timbers with eased corners.
- 75mm x 75mm x 600mm pressure-treated timber retaining posts supplied with Postsaver bitumen sleeves to prevent rot. Retaining posts will be dug to a depth of 400mm and concreted. All fixed, jointed and secured with High Tensile black bolts.

post and rail fence



Agility Trail (CP-NC)

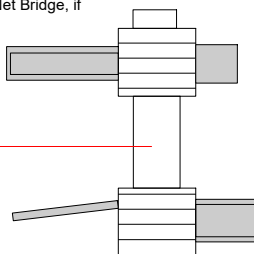
10 stepping logs (180mm in diameter and at 150mm to 350mm above ground), with 5 on either end of a balance beam (3m long with a flat top), which can be arranged in a horseshoe shape, or meander through the play site. This provides a balance and coordination challenge to traverse, as well as a unique seating area for children.



boundary of low wall and shrub

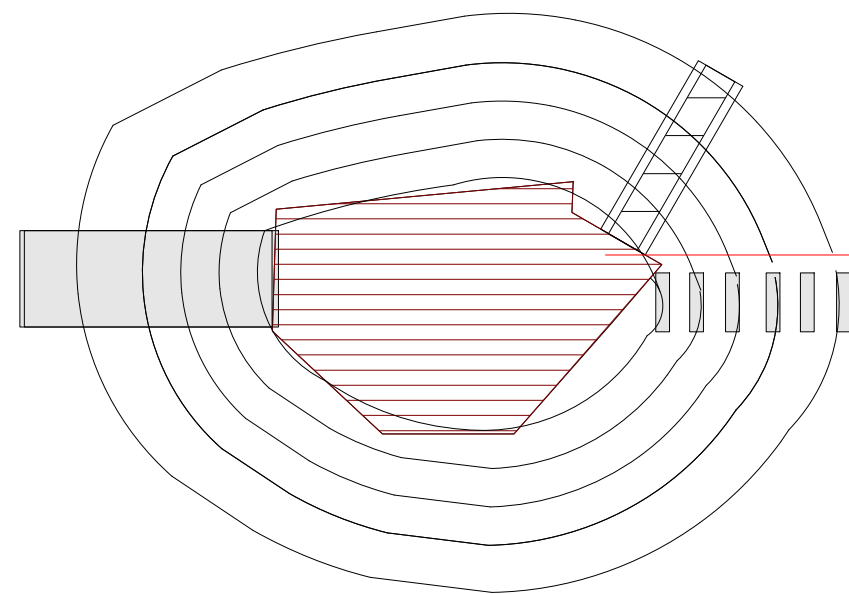
Double Multi Activity Tower Unit (K-72)

The structure will be made up of 2 towers, both with a roof. Each tower is 1.2 x 1.2m with a 1.47m-deck height. The towers are connected by a Net Bridge between the upper decks. Access to upper decks is via 4 separate elements: Solid Steps with Handrails, a Vertical Climbing Wall with different coloured/shaped rock grips, an Open Scramble Net and a climbing ramp with pull chain. Exit is via a green 3.0m HDPE slide. The support legs are 1/4 sawn machine rounds with sand and varnished finish, fitted with galvanised metal extension legs which are to limit the effects of ground moisture and are concreted into position. Main fixings are stainless steel. The products are designed to be suitable for children between 5-14 years. Suitable safety surfacing is required for this product. An optional Barrel Tunnel can be added below the Net Bridge, if preferred.



NYMNPA

23/03/2022



Semi Octagonal Mound Platform Deck (CP-DECK BES)

To enhance the existing grass mound and provide an exciting, natural playscape by adding a semi octagonal landing platform 2.0m x 1.5m at the top of the mound. There will be a guard rail with half-round timber balustrades. Access will include a 4.0m x 0.8m Climbing Ramp with different coloured/shaped rock grips and a deck entry frame, positioned at the right-hand elevation of the mound, (where existing plastic slide is). To the left elevation, six Sleeper Steps will be installed. Each step is 0.8m long and constructed from 250mm x 125mm pressure-treated UC 3 redwood timber sleepers - all will be treated with bitumen underneath and along the back side to minimise ingress of ground moisture and provide greater longevity. To the front/left elevation, a triangular lower deck platform will abut the semi-octagonal deck frame and will provide a step down to the slide entry - complete with deck entry frame. The existing stainless-steel slide will be reinstated. All constructed within the parameters of BSEN1176.

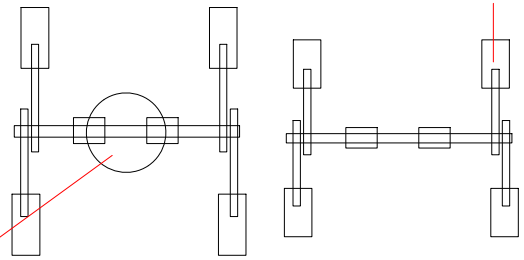
Preparation of the mound will include:

- The removal of the plastic slide - to be set aside for disposal by The Grainary.
- Various grading work to level the top of the mound prior to installing the Platform and Triangular Slide entry platform.
- The removal and reinstallation of the stainless-steel slide



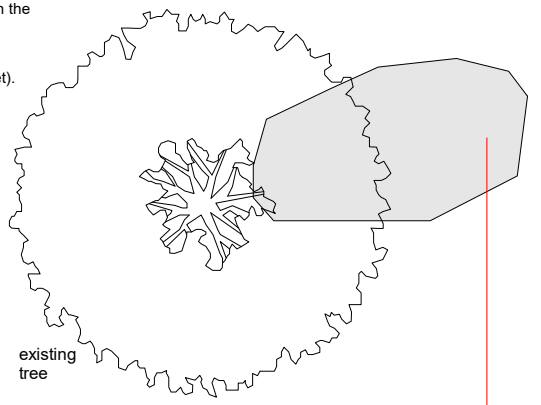
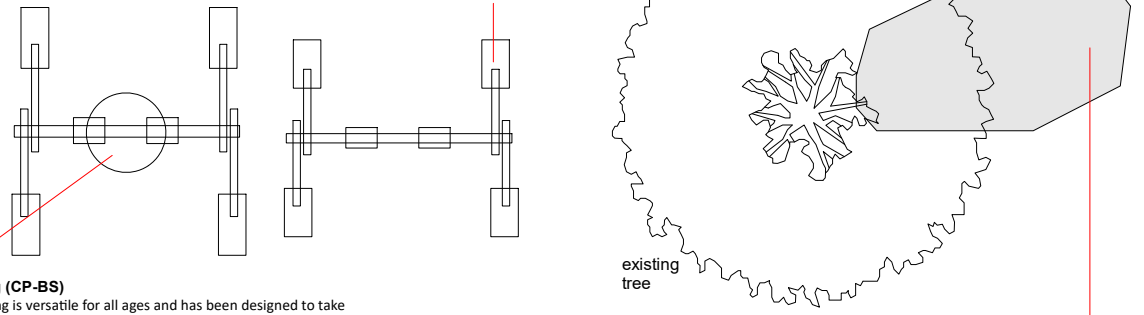
photographs of the site

Double Swing Frame (K-13D)
 The Standard Double Swing Frame is 3.5m long, 2.2m wide and 2.73m high. The top pole is 14cm diameter with 12cm diameter frame legs, which are fitted with galvanised metal legs and are concreted into the ground. The timber is pressure-treated with non-arsenic preservative salts and impregnated with wax. The swing points are heavy duty stainless steel and the swings are at a minimum height of 40cm. Two Flat Swing Seats are included in the quote. The swings require an appropriate safety surface (3.5 x 7.0m) with a free space area of 8.0m x 6.0m. A Toddler Cradle Swing Seat (RT-CSS) is available as an alternative, if preferred (£135.00 + VAT per swing and chain set).



existing kiosk

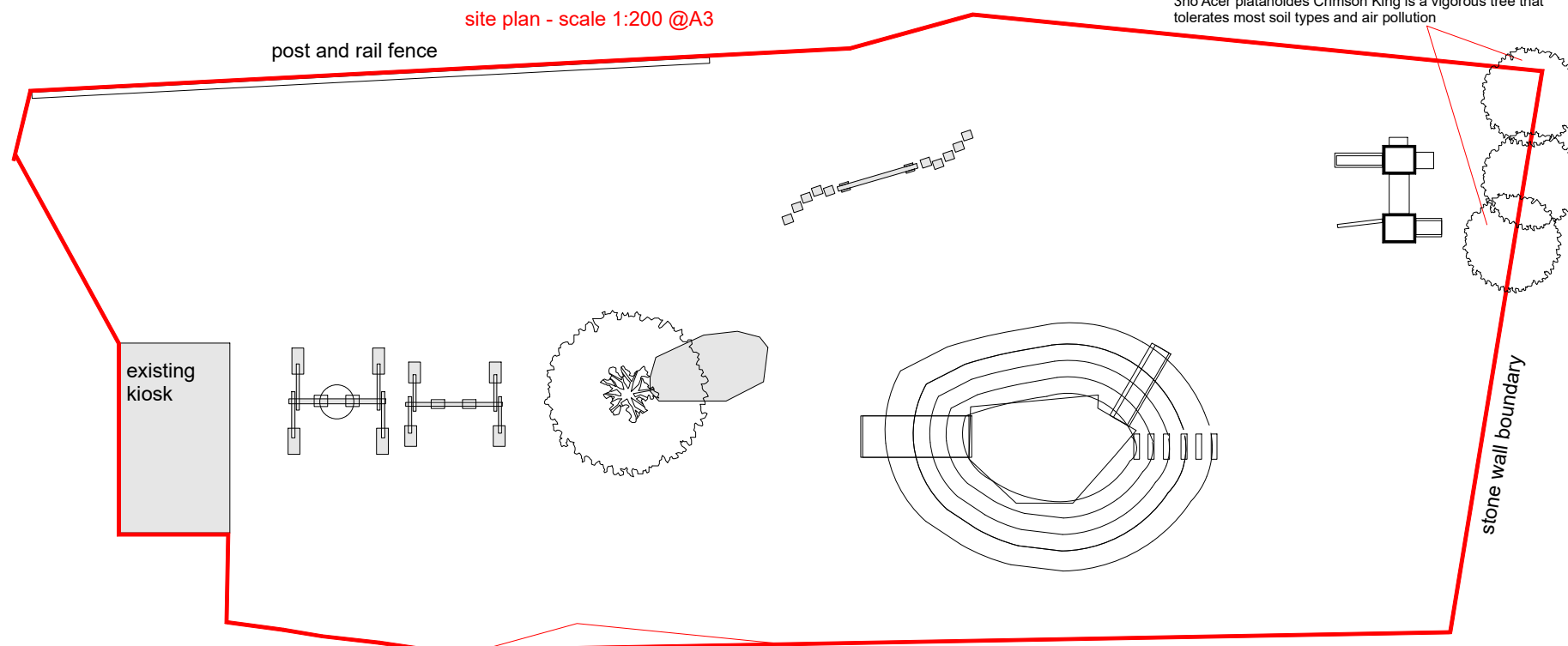
Basket Swing (CP-BS)
 The Basket Swing is versatile for all ages and has been designed to take several young children, or a couple of adults, with a capacity to carry a tonne. It is ideally suited and is certificated for use by children and adults with special needs. Constructed with 12cm diameter, quarter-sawn timber legs and an 18cm diameter, machine-rounded top pole, the frame is 3.5m long by 2.8m wide by 2.7m high. All fittings are stainless steel and the 1.2m diameter basket is a heavy-duty galvanised steel ring cushioned and secured with steel-core multi-strand 16mm herculean net rope. The Basket and rope comes in Red and Blue, or all Black. Safety surfacing is required to meet EN 1177 standards (minimum safety surfacing area: 3.0m x 7.0m).



existing tree

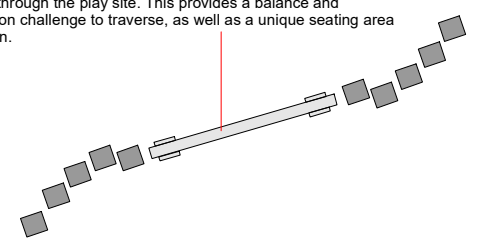
Sandpit Edging & Restoration (CP-BES)
 This work will include the following:
 • Remove existing edging and stack neatly for disposal by The Grainary
 • Supply and install new edging - approx. 19.2 linear metres - constructed from pressure-treated landscape grade Timber Sleeper Edging (2400mm x 100mm x 200mm) laid on end to a height of 200mm
 • Edging will be capped to provide seating ledge on top, which will be constructed with CLS, graded C24 pressure-treated 195mm x 45mm timbers with eased corners.
 • 75mm x 75mm x 600mm pressure-treated timber retaining posts supplied with Postsaver bitumen sleeves to prevent rot. Retaining posts will be dug to a depth of 400mm and concreted. All fixed, jointed and secured with High Tensile black bolts.

site plan - scale 1:200 @A3

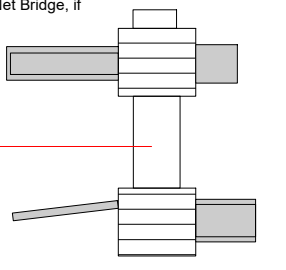


existing kiosk

Agility Trail (CP-NC)
 10 stepping logs (180mm in diameter and at 150mm to 350mm above ground), with 5 on either end of a balance beam (3m long with a flat top), which can be arranged in a horseshoe shape, or meander through the play site. This provides a balance and coordination challenge to traverse, as well as a unique seating area for children.



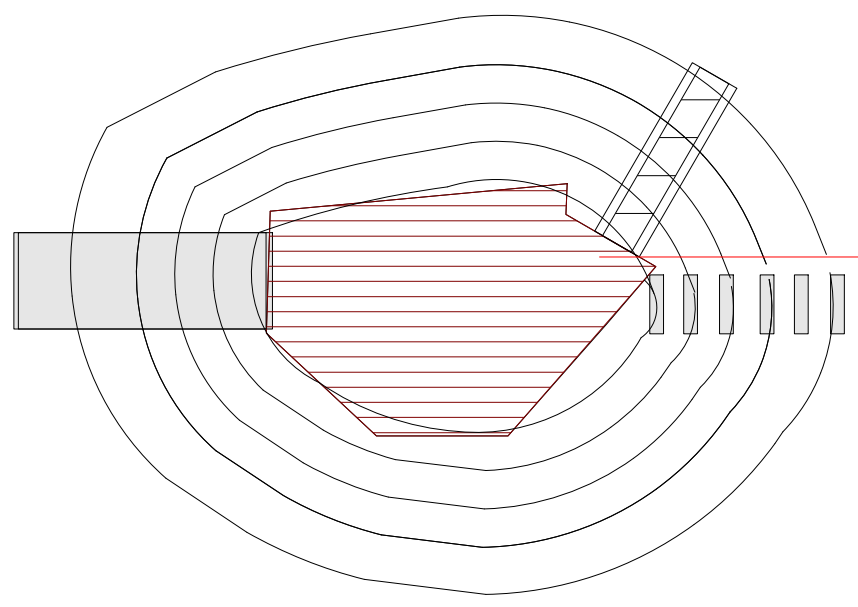
Double Multi Activity Tower Unit (K-72)
 The structure will be made up of 2 towers, both with a roof. Each tower is 1.2 x 1.2m with a 1.47m-deck height. The towers are connected by a Net Bridge between the upper decks. Access to upper decks is via 4 separate elements: Solid Steps with Handrails, a Vertical Climbing Wall with different coloured/shaped rock grips, an Open Scramble Net and a climbing ramp with pull chain. Exit is via a green 3.0m HDPE slide. The support legs are 1/4 sawn machine rounds with sand and varnished finish, fitted with galvanised metal extension legs which are to limit the effects of ground moisture and are concreted into position. Main fixings are stainless steel. The products are designed to be suitable for children between 5-14 years. Suitable safety surfacing is required for this product. An optional Barrel Tunnel can be added below the Net Bridge, if preferred.



boundary of low wall and shrub

stone wall boundary

NYMNP
 28/03/2022

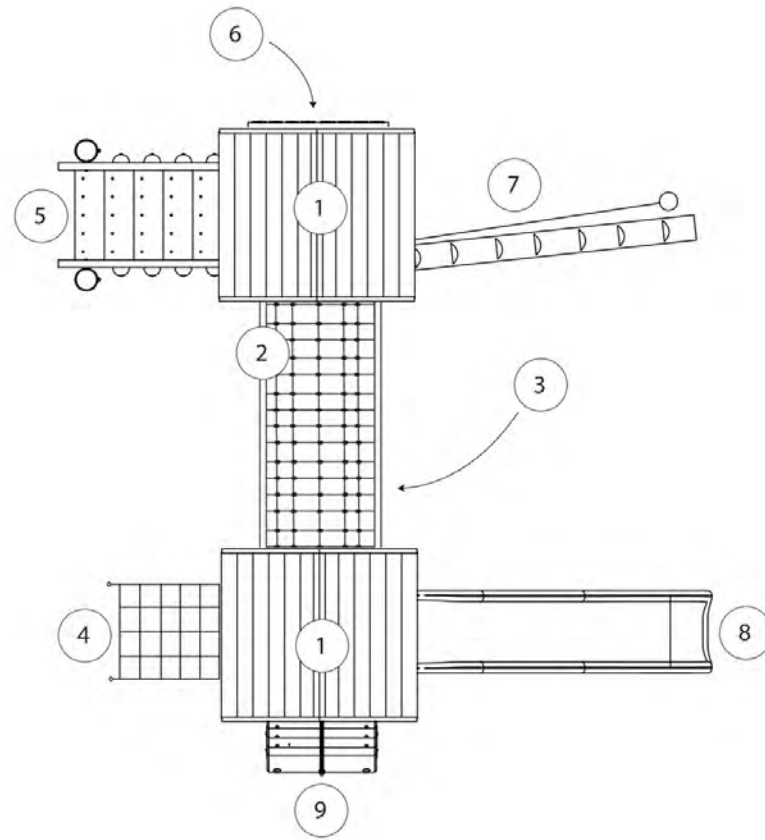


Semi Octagonal Mound Platform Deck (CP-DECK BES)
 To enhance the existing grass mound and provide an exciting, natural playscape by adding a semi octagonal landing platform 2.0m x 1.5m at the top of the mound. There will be a guard rail with half-round timber balustrades. Access will include a 4.0m x 0.8m Climbing Ramp with different coloured/shaped rock grips and a deck entry frame, positioned at the right-hand elevation of the mound, (where existing plastic slide is). To the left elevation, six Sleeper Steps will be installed. Each step is 0.8m long and constructed from 250mm x 125mm pressure-treated UC 3 redwood timber sleepers - all will be treated with bitumen underneath and along the back side to minimise ingress of ground moisture and provide greater longevity. To the front/left elevation, a triangular lower deck platform will abut the semi-octagonal deck frame and will provide a step down to the slide entry - complete with deck entry frame. The existing stainless-steel slide will be reinstated. All constructed within the parameters of BSEN1176.
 Preparation of the mound will include:
 • The removal of the plastic slide - to be set aside for disposal by The Grainary.
 • Various grading work to level the top of the mound prior to installing the Platform and Triangular Slide entry platform.
 • The removal and reinstallation of the stainless-steel slide

site plan - scale 1:100 @A3

**The Grainary
Double Tower Unit
October 2021**

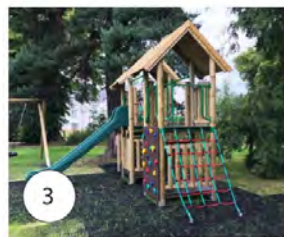
NYMNP
15/03/2022



- ① Tower with roof
- ② Rope bridge
- ③ Tunnel (underneath)
- ④ Scramble net
- ⑤ Access steps with handrails
- ⑥ Vertical rock wall
- ⑦ Jungle log ladder
- ⑧ Slide
- ⑨ Climbing ramp

Caledonia Play South Street Milnathort Kinross KY13 9XB 01577 840570 info@caledoniaplay.com www.caledoniaplay.com

**The Grainary
Extra images
October 2021**

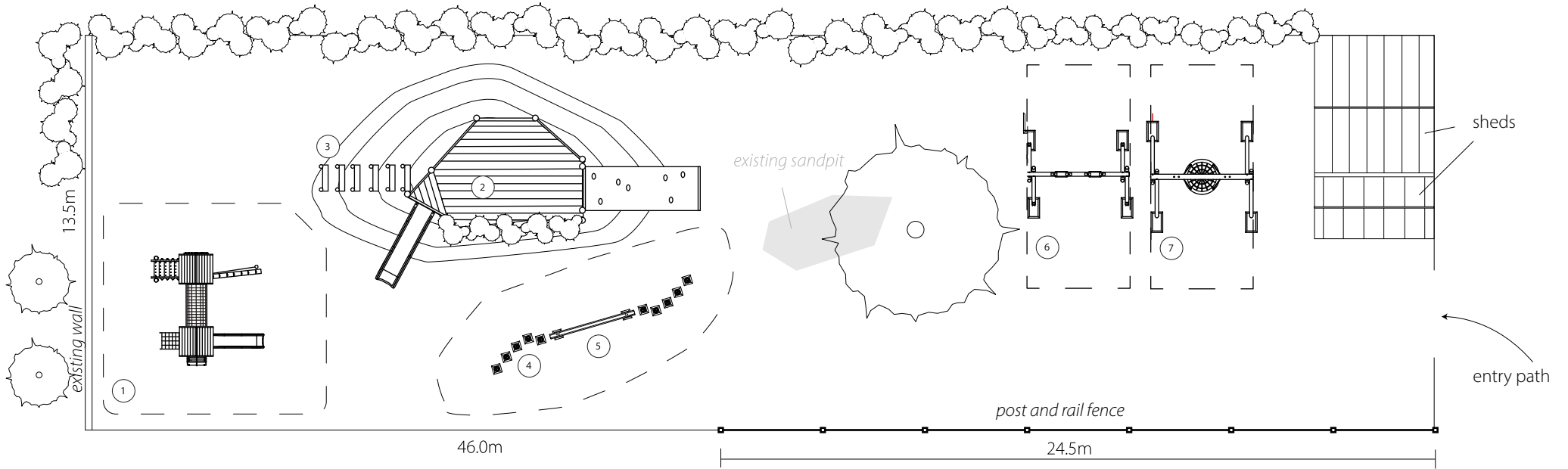


- ① Basket swing
- ② Double swing frame with flat seats
- ③ Tower with roof
- ④ Jungle log ladder
- ⑤ Rope bridge
- ⑥ Ramp
- ⑦ Tunnel
- ⑧ Scramble net
- ⑨ Steps with hand rail
- ⑩ Vertical rock wall
- ⑪ Stepping log columns and balance beam



Caledonia Play South Street Milnathort Kinross KY13 9XB 01577 840570 info@caledoniaplay.com www.caledoniaplay.com

The Grainary
Play Area Proposal
October 2021



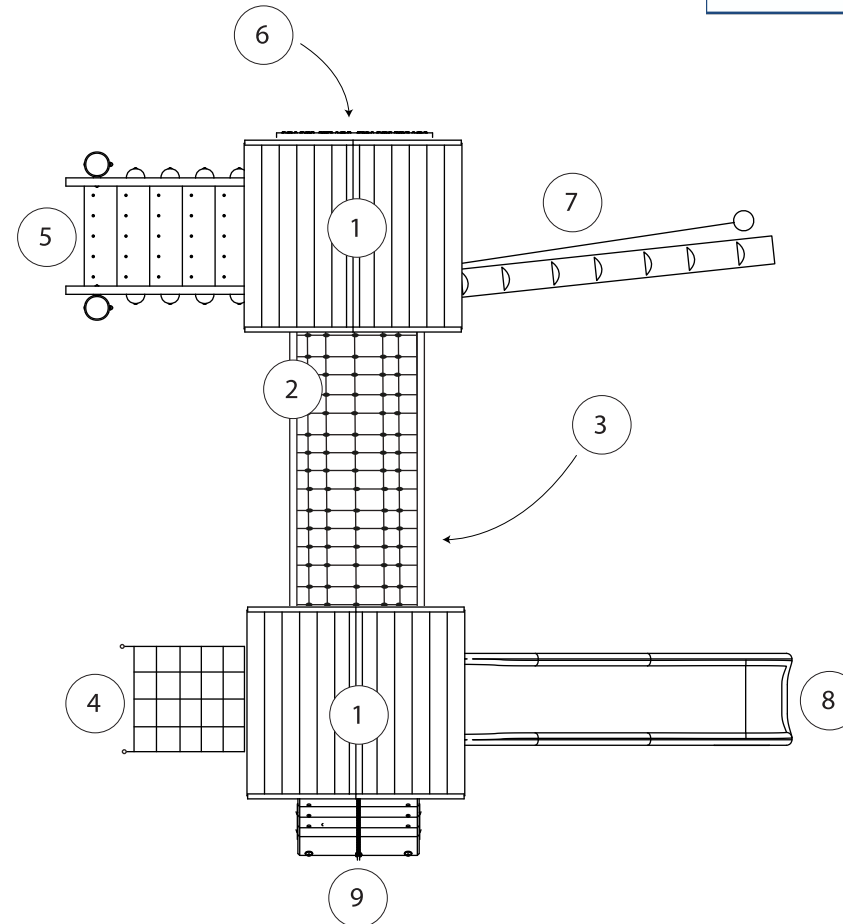
- ① Double activity tower unit
- ② Elevated platform with slide and climbing ramp
- ③ Sleeper steps
- ④ Stepping log columns x 10
- ⑤ 3.0m balance beam x 1
- ⑥ Double swing frame with flat seats
- ⑦ Basket swing

NYMNP
 15/03/2022

The Grainary
Double Tower Unit
October 2021

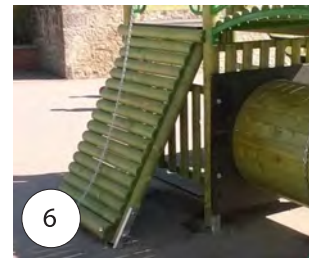
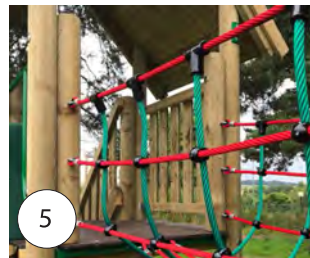
NYMNPA

15/03/2022



- ① Tower with roof
- ② Rope bridge
- ③ Tunnel (underneath)
- ④ Scramble net
- ⑤ Access steps with handrails
- ⑥ Vertical rock wall
- ⑦ Jungle log ladder
- ⑧ Slide
- ⑨ Climbing ramp

The Grainary
 Extra images
 October 2021



- ① Basket swing
- ② Double swing frame with flat seats
- ③ Tower with roof
- ④ Jungle log ladder
- ⑤ Rope bridge
- ⑥ Ramp
- ⑦ Tunnel
- ⑧ Scramble net
- ⑨ Steps with hand rail
- ⑩ Vertical rock wall
- ⑪ Stepping log columns and balance beam

NYMNPA
 15/03/2022