

- NOTES:**
1. All levels shown are above ordnance datum (AOD)
 2. All coordinates are in metres relative to ordnance survey national grid.
 3. All dimensions are in metres
 4. Do not scale from this drawing. Do not take digital dimensions off this drawing. Work to figured dimensions only - if in doubt ask.
 5. Indicative Water Tank Zone consists Baker Tanks.

- Legend - Existing Site Features**
- Land Ownership Boundary (dashed orange line)
 - Site Boundary (dashed blue line)
 - Existing Site Fence (dashed purple line)
 - Existing Public Footpath (dashed yellow line)
 - Existing Sewer Route (6000 U/G) (dashed green line)
 - Existing Building (grey fill)
 - Lagoon (blue hatched fill)
 - Existing Access Road (grey fill)
 - Attenuation Pond (blue hatched fill)

- Legend - Phase 5 Works**
- Previous Planning Phases (grey fill)
 - Phase 5 (red fill)

- Related Documents**
- 40-ST5-LC-2100-CN-MS-00006 Construction Method Statement Phase 5 - Ladycross Plantation
 - 40-ST5-LC-2100-EN-PL-00025 Construction Environmental Management Plan Phase 5 - NYMNP Condition 93 Ladycross Plantation

- Related Drawings**
- 40-ST5-LC-2100-PA-22-20115 Ladycross Plantation Phase 5 Hard & Soft Landscape
 - 40-ST5-LC-2100-PA-22-20116 Ladycross Plantation Phase 5 General Arrangement

CLIENT REVIEW				
REV	DATE	BY	CHKD	APPD
D (PLA)	21.07.2022	LL	WH	CT
Revision				
C (PLA)	20.07.2022	LL	WH	CT
Revision post comments				
B (PLA)	15.07.2022	LL	WH	CT
Revision post comments				
A (PLA)	07.07.2022	LL	WH	CT
Client Review				

NYMNP
28/07/2022

Plan - Main Site Area - Scale 1:500



Reviewed - Accepted - Work May Proceed
 Reviewed - Accepted As Noted - Work May Proceed - Review & Resubmit
 Reviewed - Work May Not Proceed - Review & Resubmit
 For Information Only
 On Hold - Pending Project Restart & Ramp Up

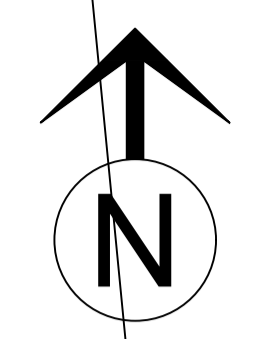
By: [Signature] / Date: 28/07/2022 11:14
 CONTAIN A PIMS AUTHORIZATION STAMP

Anglo American WoodSmith Project Ltd.
 WoodSmith Road | Lake View Development | 1201 | 2301 North Yorkshire

Drawing Title: Ladycross Plantation Phase 5 Phasing Plan
 SCALE: 1:500/NTS
 Project: WOODSMITH PROJECT

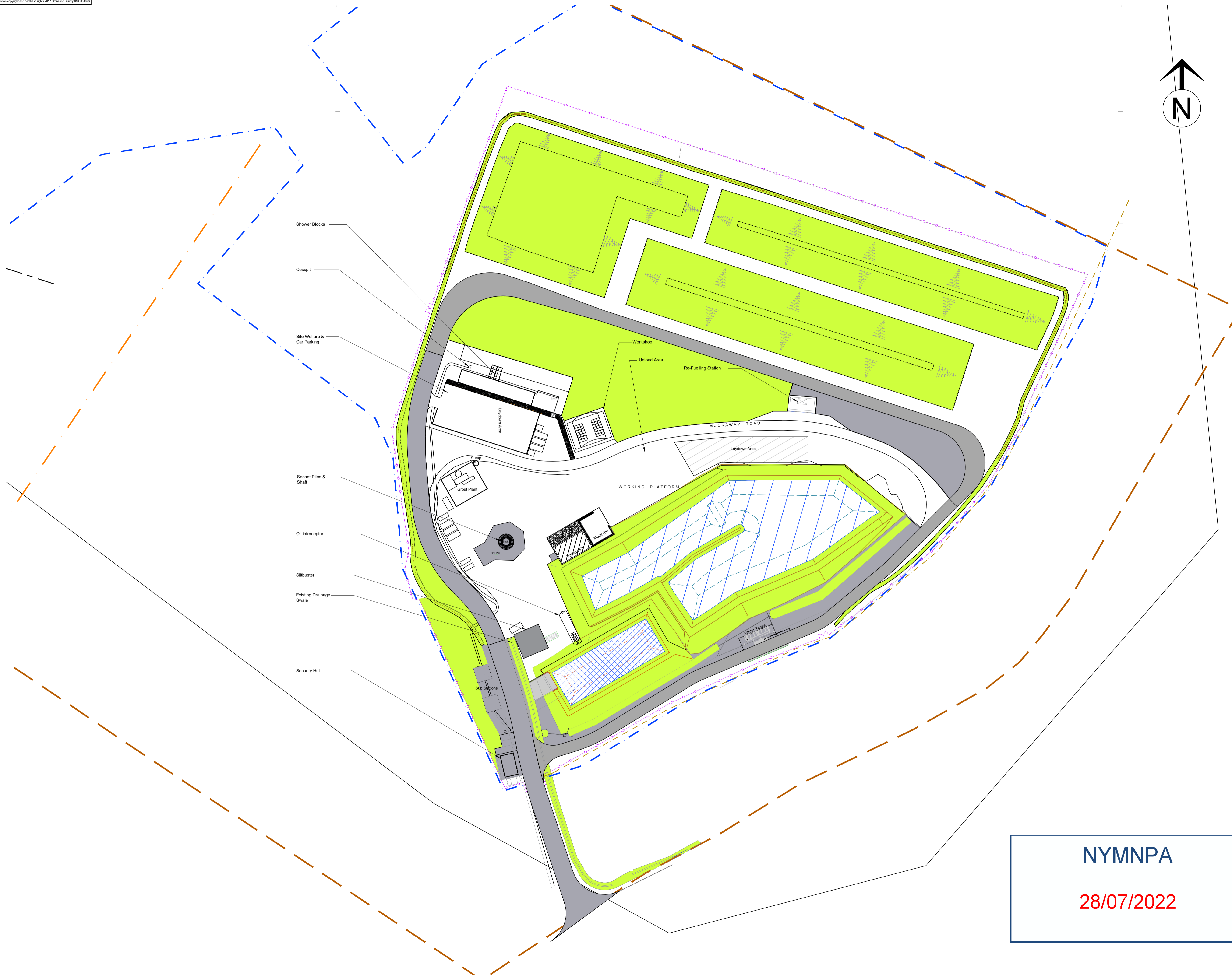
DRG No: 40-ST5-LC-2100-PA-22-20114
 REV: D

- NOTES:**
- All levels shown are above ordnance datum (AOD)
 - All coordinates are in metres relative to ordnance survey national grid.
 - All dimensions are in metres
 - Do not scale from this drawing. Do not take digital dimensions of this drawing. Work to figured dimensions only - if in doubt ask
 - Indicative Water Tank Zone consists Baker Tanks



- Legend - Existing Site Features**
- Land Ownership Boundary
 - Site Boundary
 - Existing Site Fence
 - Existing Public Footpath
 - Existing Sewer Route (6000)
 - Existing Building
 - Lagoon
 - Existing Access Road
 - Attenuation Pond

- Legend - Phase 5 Works**
- Landscaping - Hard
 - Landscaping - Soft



- Related Documents**
- 40-ST5-LC-2100-CN-MS-00006 Construction Method Statement Phase 5 - Ladycross Plantation
 - 40-ST5-LC-2100-EN-PL-00025 Construction Environmental Management Plan Phase 5 - NYMNP Condition 93 Ladycross Plantation

- Related Drawings**
- 40-ST5-LC-2100-PA-22-20114 Ladycross Plantation Phase 5 Phasing Plan
 - 40-ST5-LC-2100-PA-22-20116 Ladycross Plantation Phase 5 General Arrangement

CLIENT REVIEW				
C (PLA)	21.07.2022	LL	WH	CT
B (PLA)	15.07.2022	LL	WH	CT
A (PLA)	07.07.2022	LL	WH	CT
REV	DATE	BY	CHKD	APPD



Creating Title: Ladycross Plantation Phase 5 Hard & Soft Landscaping
 SCALE: 1:500/NTS
 Project:

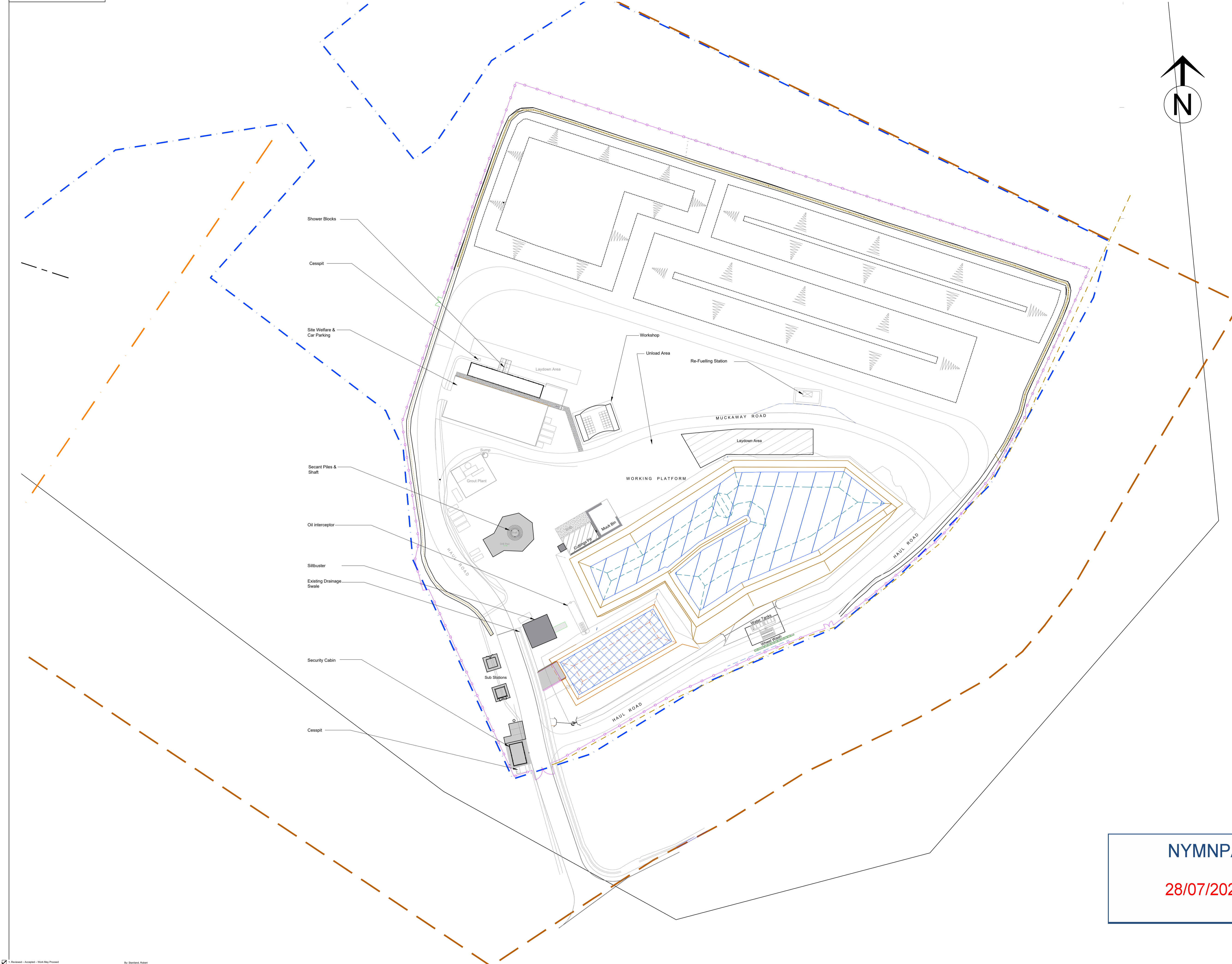
WOODSMITH PROJECT **STRABAG**
 DRG No: 40-ST5-LC-2100-PA-22-20115 REV: C

NYMNP
28/07/2022

Plan - Main Site Area - Scale 1:500

Reviewed - Accepted - Work May Proceed
 Reviewed - Accepted As Noted - Work May Proceed, Review & Resubmit
 Reviewed - Work May Not Proceed - Review & Resubmit
 For Information Only
 On Hold - Pending Project Restart & Replan On

CONTAIN A PIMS AUTHORISATION STAMP



- NOTES:**
- All levels shown are above ordnance datum (AOD)
 - All coordinates are in metres relative to ordnance survey national grid.
 - All dimensions are in metres
 - Do not scale from this drawing. Do not take digital dimensions off this drawing. Work to figured dimensions only - if in doubt ask
 - Indicative Water Tank Zone consists Baker Tanks

- Legend - Existing Site Features**
- Land Ownership Boundary
 - Site Boundary
 - Existing Site Fence
 - Existing Public Footpath
 - Existing Sewer Route (6000 U/G)
 - Existing Building
 - Lagoon
 - Existing Access Road
 - Attenuation Pond

- Related Documents**
- 40-ST5-LC-2100-CN-MS-00006 Construction Method Statement Phase 5 - Ladycross Plantation
 - 40-ST5-LC-2100-EN-PL-00025 Construction Environmental Management Plan Phase 5 - NYMNPFA Condition 93 Ladycross Plantation

- Related Drawings**
- 40-ST5-LC-2100-PA-22-20114 Ladycross Plantation Phase 5 Phasing Plan
 - 40-ST5-LC-2100-PA-22-20115 Ladycross Plantation Phase 5 Hard & Soft Landscaping

NYMNPFA
28/07/2022

CLIENT REVIEW				
REV	DATE	BY	CHKD	APPD
D (PLA)	20.07.2022	LL	WH	CT
Revised Post Comments				
C (PLA)	20.07.2022	LL	WH	CT
Revised Post Comments				
B (PLA)	15.07.2022	LL	WH	CT
Revised Post Comments				
A (PLA)	07.07.2022	LL	WH	CT
Client Review				



Drawing Title: Ladycross Plantation Phase 5 General Arrangement

SCALE: 1:500/NTS

Project: WOODSMITH PROJECT **STRABAG**

DRG No: 40-ST5-LC-2100-PA-22-20116 REV: **D**

Reviewed - Accepted - Work May Proceed
 Reviewed - Accepted As Noted - Work May Proceed, Review & Resubmit
 Reviewed - Work May Not Proceed - Review & Resubmit
 For Information Only
 On Hold - Pending Project Restart & Ramp Up
 DRAWINGS ARE NOT VALID UNLESS THEY CONTAIN A PIMS AUTHORISATION STAMP

Plan - Main Site Area - Scale 1:500

