

From: General Manager- Ox Pasture Hall Hotel

Sent: 21 September 2022 13:11

To: Jill Bastow <j.bastow@northyorkmoors.org.uk>

Subject: Re: External Lighting Proposal To New Spa Development - Ox pasture Hall - Operational times

Dear Jill,

Please find attached the Victorian lamp post we will be using.

The only difference will be the lighting inside the head unit which Mike will source for downward lighting.

Is this enough to pass the external lighting condition now?

Kind regards,

Jay Badsha
General Manager
Ox Pasture Hall Hotel

www.oxpasturehallhotel.com

Click Below to visit us on Facebook

<http://www.facebook.com/oxpasture.hall?ref=stream>

NYMNP

21/09/2022

AMENDED



From:
To: [Jill Bastow](#); [Mike Hawtin](#)
Cc: [Oxpasturehallhotel Info](#); [Reception Ox Pasture Hall](#)
Subject: Fwd: External Lighting Proposal To New Spa Development - Ox pasture Hall - Operational times
Date: 21 September 2022 12:12:09
Attachments: [CCF_000013.pdf](#)

Dear Jill,

Re. New Spa Development

As just discussed with Mike Hawtin please find attached drawing showing lighting proposal.

All spa lights (highlighted in orange and green) will be controlled by a light sensor.

Highlighted in orange will be lights that will be controlled by a motion sensor after 11.30pm. This will cover access to the ground floor suites from the hotel and car park.

Highlighted in green will be lights controlled by a timer programmed for off at 10.30pm.

Mike will be sending across details for the lights.

Kind regards,

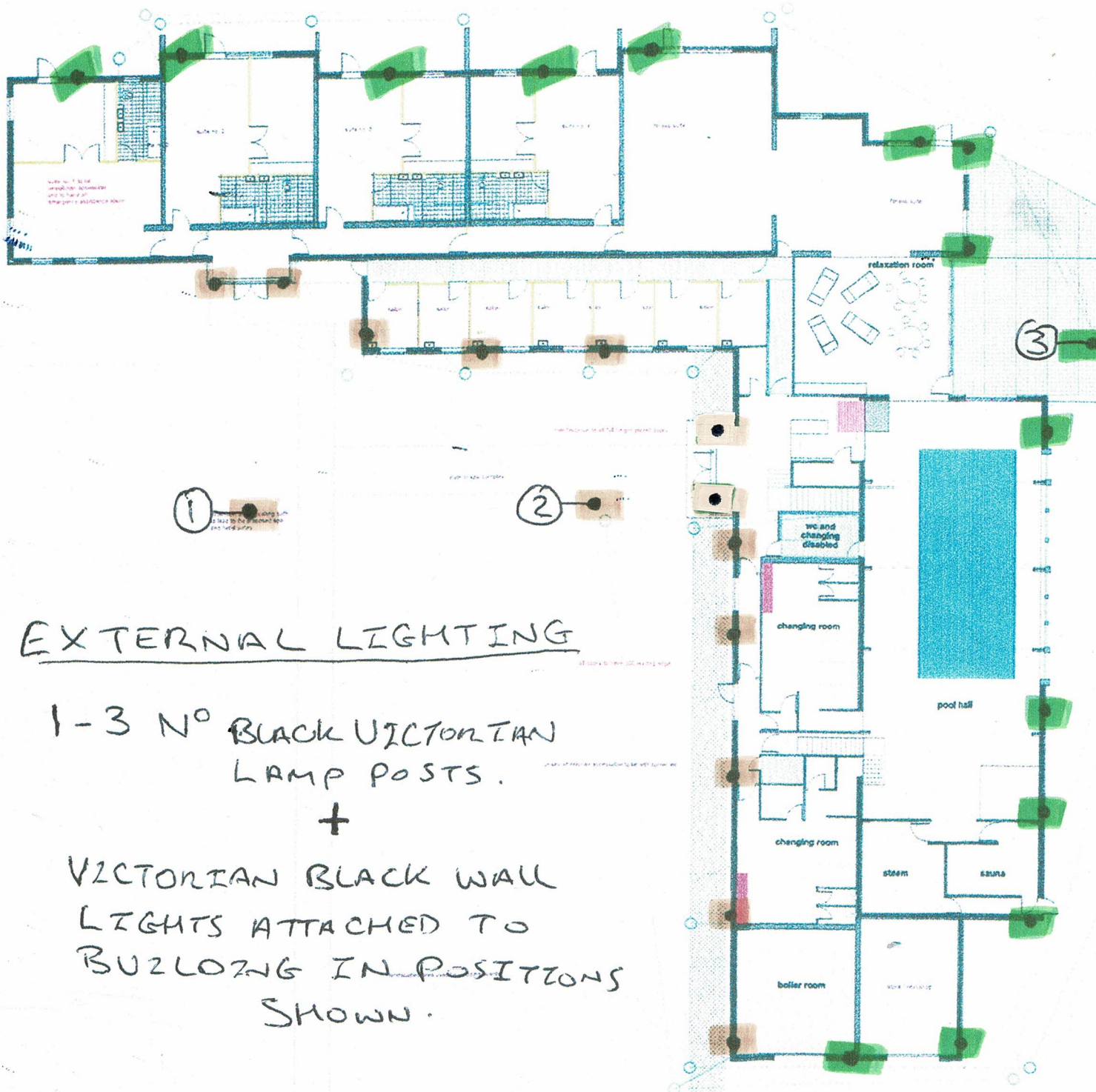
Jay Badsha
General Manager
Ox Pasture Hall Hotel

www.oxpasturehallhotel.com

Click Below to visit us on Facebook

<http://www.facebook.com/oxpasture.hall?ref=stream>

All lighting is to be controlled by a central lighting control system. The system is to be designed to provide a high level of energy efficiency. The system is to be designed to provide a high level of energy efficiency. The system is to be designed to provide a high level of energy efficiency.



EXTERNAL LIGHTING

1-3 N° BLACK VICTORIAN LAMP POSTS.

+

VICTORIAN BLACK WALL LIGHTS ATTACHED TO BUZZBOX IN POSITIONS SHOWN.

HIGHLIGHTED IN ORANGE

- 11-30pm LIGHTS OFF WITH MOTION SENSOR.

HIGHLIGHTED IN GREEN

- 10-30pm LIGHTS OFF.

AMENDED

NYMNP
21/09/2022

ground floor layout
 Alpha, Design, Draw
 Date: 10/09/2022
 Scale: 1:100
 Project: NYMNP
 Drawn by: [Name]
 Checked by: [Name]

From: General Manager- Ox Pasture Hall Hotel
Sent: 21 September 2022 12:11
To: Jill Bastow <j.bastow@northyorkmoors.org.uk>
Cc: Mike Hawtin <m.hawtin@northyorkmoors.org.uk>; Shaun Conway <Oxpasturehallhotel Info <info@oxpasturehallhotel.com>; Reception Ox Pasture Hall <oxpasturehallreservations@gmail.com>
Subject: Fwd: External Lighting Proposal To New Spa Development - Ox pasture Hall - Operational times

----- Forwarded message -----

From: **General Manager- Ox Pasture Hall Hotel**
Date: Wed, Sep 21, 2022 at 12:10 PM
Subject: Fwd: External Lighting Proposal To New Spa Development - Ox pasture Hall - Operational times
To: Jill Bastow <j.bastow@northyorkmoors.org.uk>, Mike Hawtin <m.hawtin@northyorkmoors.org.uk>
Cc: Shaun Conway Oxpasturehallhotel Info <info@oxpasturehallhotel.com>, Reception Ox Pasture Hall <oxpasturehallreservations@gmail.com>

Dear Jill,

Re. New Spa Development

As just discussed with Mike Hawtin please find attached drawing showing lighting proposal.

All spa lights (highlighted in orange and green) will be controlled by a light sensor.

Highlighted in orange will be lights that will be controlled by a motion sensor after 11.30pm. This will cover access to the ground floor suites from the hotel and car park.

Highlighted in green will be lights controlled by a timer programmed for off at 10.30pm.

Mike will be sending across details for the lights.

Kind regards,

Jay Badsha
General Manager
Ox Pasture Hall Hotel

www.oxpasturehallhotel.com

Click Below to visit us on Facebook

<http://www.facebook.com/oxpasture.hall?ref=stream>

The Dark Sky A/B range of LED lanterns consists of 4 lanterns. 2 four sided lanterns and 2 six sided lanterns both with or without PIR sensor. The non-PIR versions can be constructed as either upward or downward lanterns.

The PIR versions can only be mounted as upward lanterns. Suitable for use in high saline coastal areas. Integral driver and 3000K 8W LED.
Complete with 2 year warranty.



NYMNPA

21/09/2022

Product Features

- 2 year warranty
- IP44
- Class II
- 8w 3000K
- Suitable for High Saline Areas
- Non Dimmable
- 4 Sided or 6 Sided options
- PIR Versions
- Non-PIR versions can be constructed to be mounted on the bracket in either an upward or downward style
- Life: L70 - 25,000hrs

AMENDED

Product Information							
Code	Description	Power (w)	Lumen (Lm)	CRI	PIR	Energy Class	Protection Class
DSA12BLK	8w 4 sided Up/Down Light	8	419	85	No	A	II
DSA13BLK	8w 4 sided Up/Down Light with PIR	8	419	85	Yes	A	II
DSB16BLK	8w 6 sided Up/Down Light	8	400	85	No	A	II
DSB17BLK	8w 6 sided Up/Down Light with PIR	8	400	85	Yes	A	II

Nominal voltage	220-240VAC
Operating frequency	50/60Hz
IP rating	44
Start time	<0.5 sec

PIR Specifications

Detection Range	1-8m@2m mounting height
Detection Angle	120°
Detection Speed	0.6~1.5 m/sec
Time Setting	90 seconds from last trigger non-adjustable
Lux Setting	On <30 lux – Off >80 lux non-adjustable
Manual Override	Yes – Switch power twice within 2 sec
Parasitic Power	<0.5W

Construction

Body: PP (Polypropylene)
Diffuser: PC (Polycarbonate)

Standards

BSEN60598-1:2015 Luminaires – Part 1: General requirements and tests

In Conformity with

LVD Low voltage directive 2014/35/EU
ERP Energy related products directive 2009/125/EC
RoHS Restriction of hazardous substances 2011/65/EU