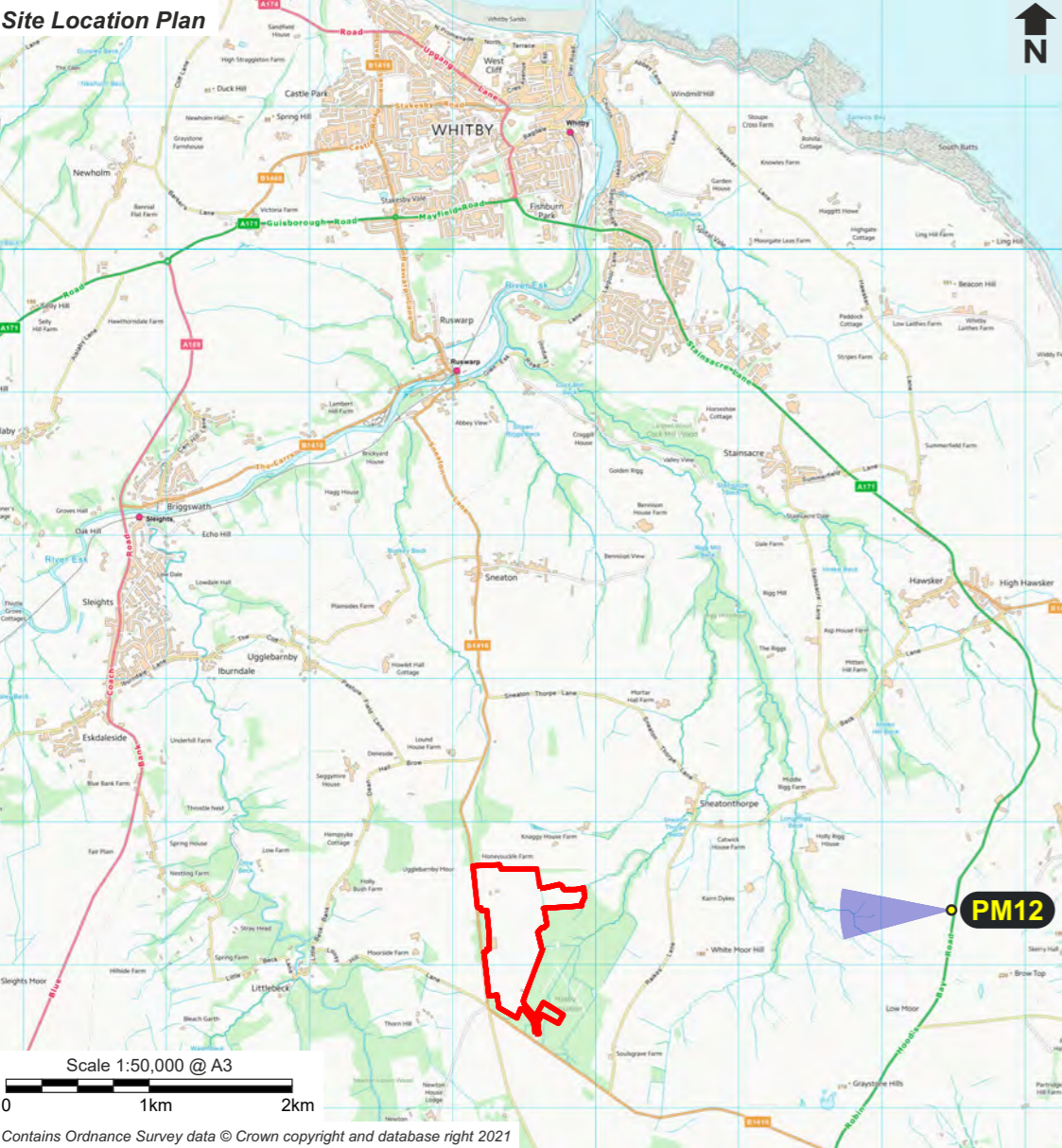
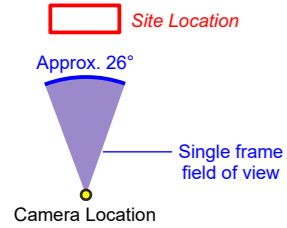


Grid reference: E492500 N505394
 Elevation: 198m AOD
 Direction of centre of view: 268°
 Horizontal field of view: Approx. 26°
 Distance to site boundary: 2560m

Camera body: Canon 5D, Mark IV
 Lens: 150mm
 Camera height above ground level: 1.5m
 Time and date of photo: 4pm, 25/08/2022
 Weather conditions: Dry & cloudy, clear visibility

Correct Viewing Distance
 Print at A3 sheet size, view with both eyes at 500mm distance to form a representation of the real scene.



© 2023 Anglo American Woodsmith Limited. This document contains intellectual property of Anglo American Woodsmith Limited and/or its affiliates and is subject to legal restrictions as to its use. Recipients may not copy, distribute, disseminate, disclose or otherwise use this document or the contents hereof except as is specifically authorized by Anglo American Woodsmith Limited.

THIS DRAWING IS CONFIDENTIAL AND THE PROPERTY OF ANGLO AMERICAN PLC - IT MUST NOT BE COPIED WITHOUT WRITTEN CONSENT

AMENDED

NYMNPA
 10/02/2023

View 12: Existing View



B(PLA)	25/01/2023	WM	SME	BMA
Revision Description PLANNING				
A(IFR)	16/01/2023	WM	SME	BMA
Revision Description REVIEW				
REV	DATE	BY	CHKD	APPD



Anglo American Woodsmith Limited
 Resolution House | Lake View | Scarborough | YO11 3ZB | North Yorkshire
 T: +44 (0) 1723 470010 | W: uk.angloamerican.com

Drawing Title: **WOODSMITH PROJECT
 CONSTRUCTION PHASE
 PROCESS AND FIREWATER
 TANKS LVIA**
**PHOTOMONTAGE VIEW 12
 FROM ROBIN HOOD'S BAY ROAD**

SCALE @ A3: N/A

CONT No:	
Package No:	P0902
DRG No:	1580-WOB-CI-31-00001
REV	B



Grid reference: E492500 N505394
 Elevation: 198m AOD
 Direction of centre of view: 268°
 Horizontal field of view: Approx. 26°
 Distance to site boundary: 2560m

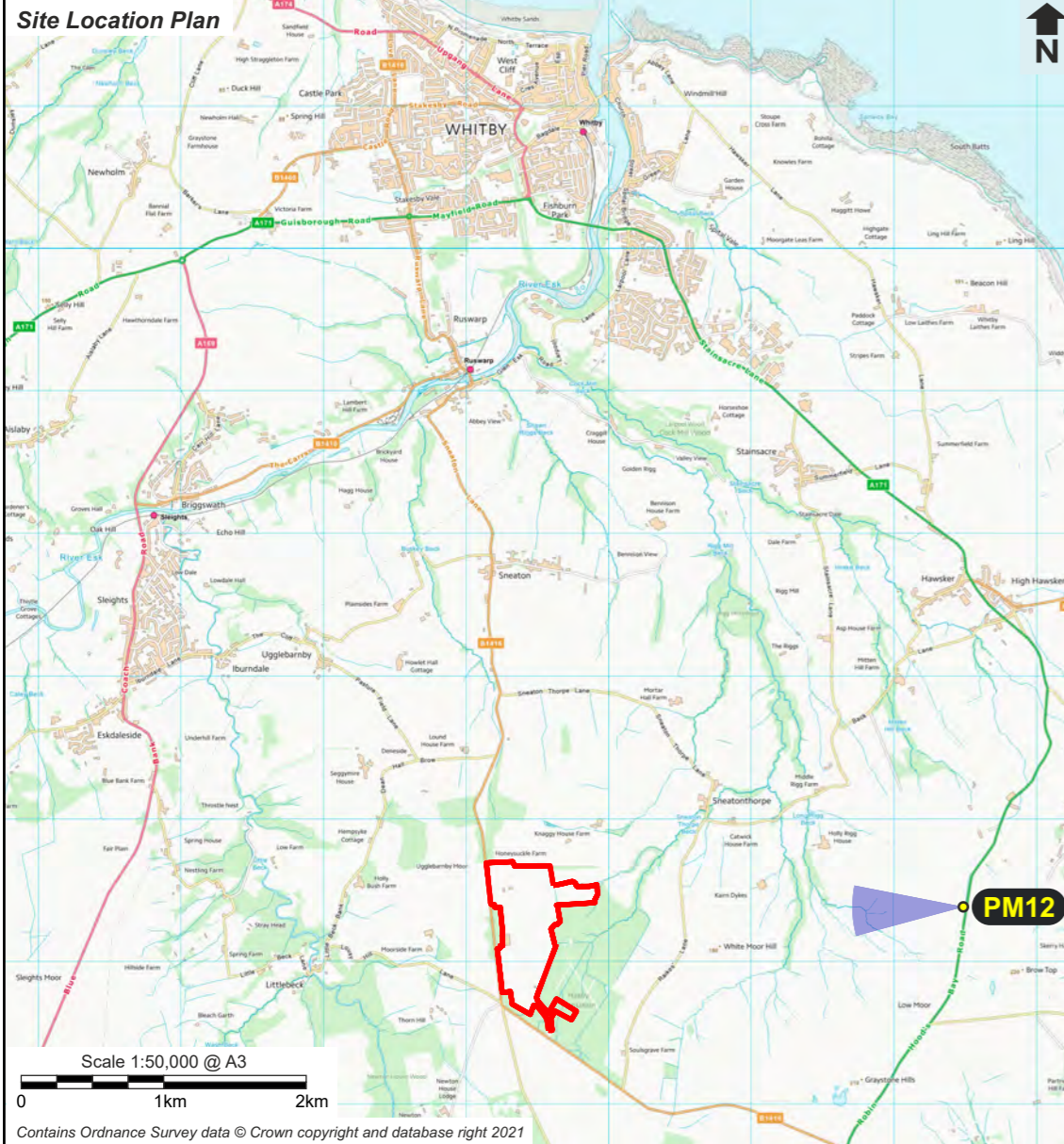
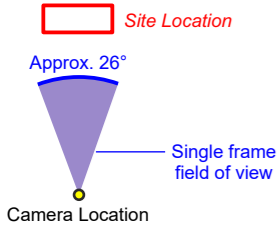
AMENDED

NYMNP

10/02/2023

Camera body: Canon 5D, Mark IV
 Lens: 150mm
 Camera height above ground level: 1.5m
 Time and date of photo: 4pm, 25/08/2022
 Weather conditions: Dry & cloudy, clear visibility

Correct Viewing Distance
 Print at A3 sheet size, view with both eyes at 500mm distance to form a representation of the real scene.



View 12: View With Process & Firewater Tanks - Sheet 1



B(PLA)	25/01/2023	WM	SME	BMA
Revision Description PLANNING				
A(IFR)	16/01/2023	WM	SME	BMA
Revision Description REVIEW				
REV	DATE	BY	CHKD	APPD



Anglo American Woodsmith Limited
 Resolution House | Lake View | Scarborough | YO11 3ZB | North Yorkshire
 T: +44 (0) 1723 470010 | W: uk.angloamerican.com

Drawing Title: **WOODSMITH PROJECT
 CONSTRUCTION PHASE
 PROCESS AND FIREWATER
 TANKS LVIA**
**PHOTOMONTAGE VIEW 12
 FROM ROBIN HOOD'S BAY ROAD**

SCALE @ A3: N/A

CONT No:

Package No:
P0902

DRG No:
1580-WOB-CI-31-00002



REV

B

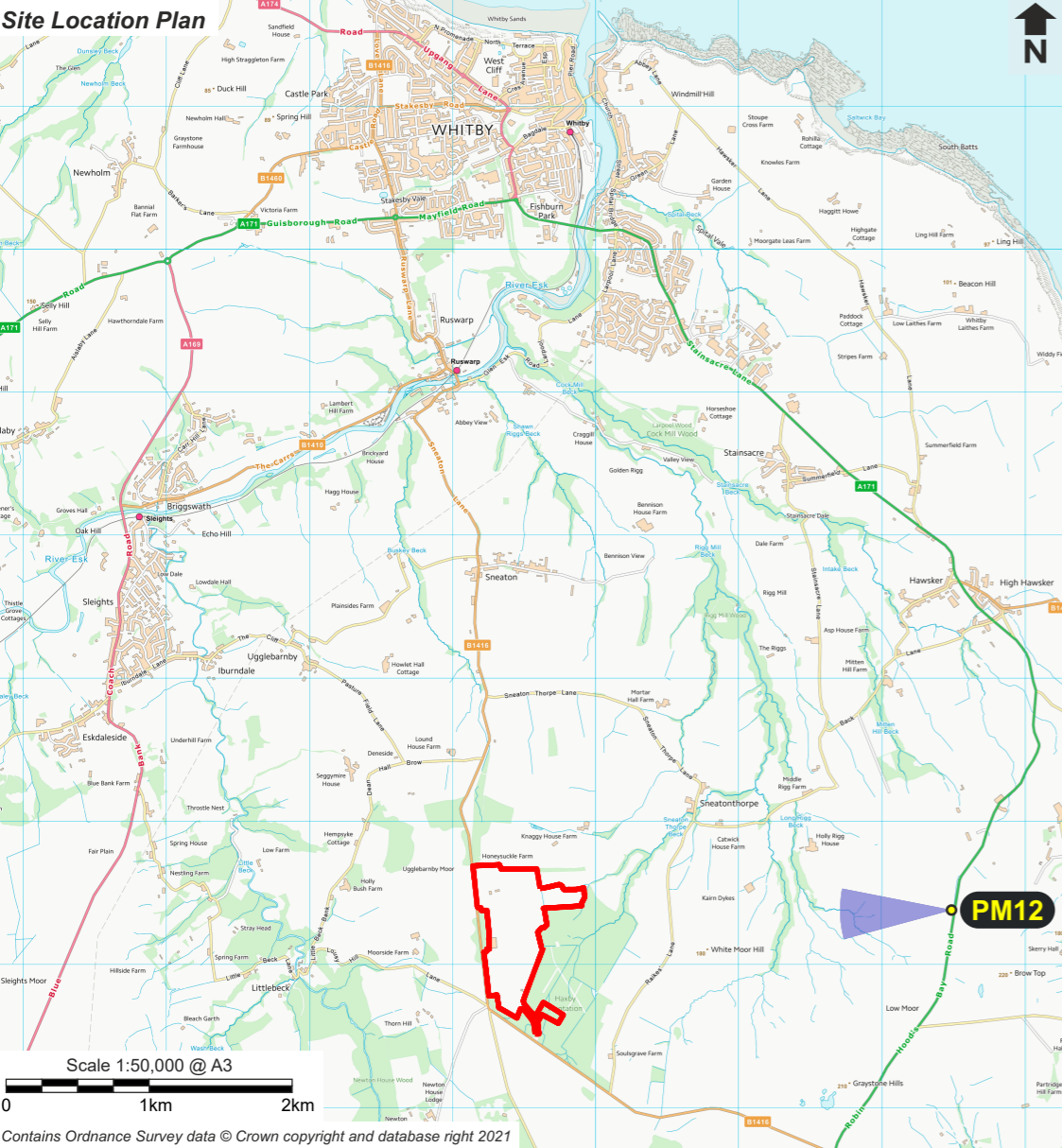
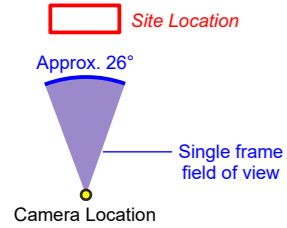
© 2023 Anglo American Woodsmith Limited. This document contains intellectual property of Anglo American Woodsmith Limited and/or its affiliates and is subject to legal restrictions as to its use. Recipients may not copy, distribute, disseminate, disclose or otherwise use this document or the contents hereof except as is specifically authorized by Anglo American Woodsmith Limited.

THIS DRAWING IS CONFIDENTIAL AND THE PROPERTY OF ANGLO AMERICAN PLC - IT MUST NOT BE COPIED WITHOUT WRITTEN CONSENT

Grid reference: E492500 N505394
 Elevation: 198m AOD
 Direction of centre of view: 268°
 Horizontal field of view: Approx. 26°
 Distance to site boundary: 2560m

Camera body: Canon 5D, Mark IV
 Lens: 150mm
 Camera height above ground level: 1.5m
 Time and date of photo: 4pm, 25/08/2022
 Weather conditions: Dry & cloudy, clear visibility

Correct Viewing Distance
 Print at A3 sheet size, view with both eyes at 500mm distance to form a representation of the real scene.



© 2023 Anglo American Woodsmith Limited. This document contains intellectual property of Anglo American Woodsmith Limited and/or its affiliates and is subject to legal restrictions as to its use. Recipients may not copy, distribute, disseminate, disclose or otherwise use this document or the contents hereof except as is specifically authorized by Anglo American Woodsmith Limited.

THIS DRAWING IS CONFIDENTIAL AND THE PROPERTY OF ANGLO AMERICAN PLC - IT MUST NOT BE COPIED WITHOUT WRITTEN CONSENT

AMENDED

NYMNP
 10/02/2023

View 12: View With Process & Firewater Tanks - Sheet 2



B(PLA)	25/01/2023	WM	SME	BMA
Revision Description PLANNING				
A(IFR)	16/01/2023	WM	SME	BMA
Revision Description REVIEW				
REV	DATE	BY	CHKD	APPD



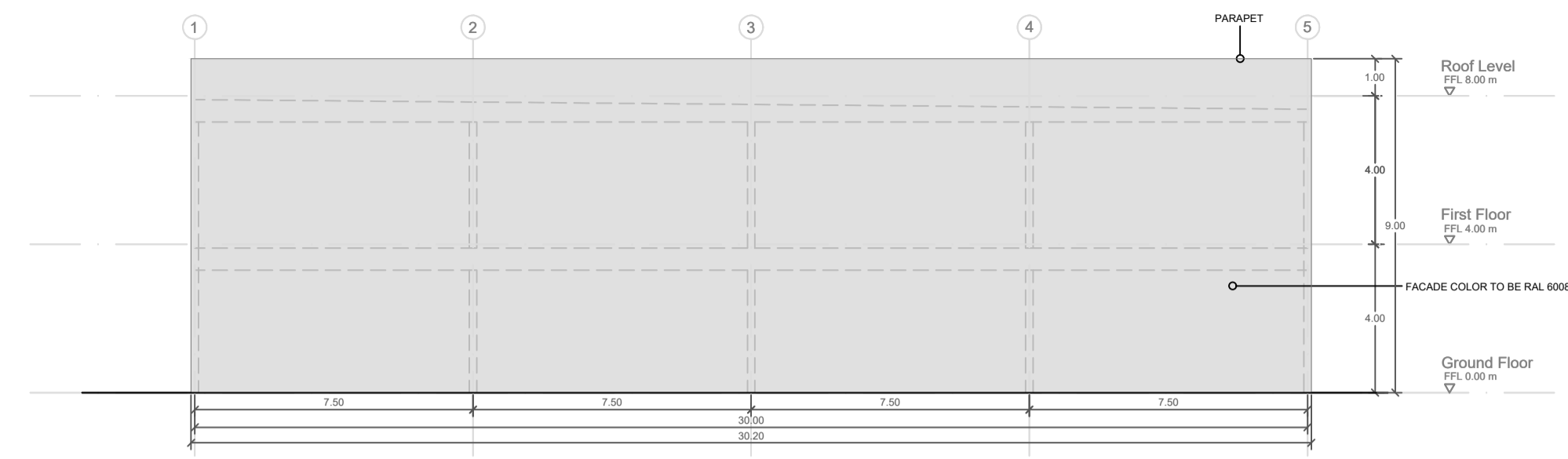
Anglo American Woodsmith Limited
 Resolution House | Lake View | Scarborough | YO11 3ZB | North Yorkshire
 T: +44 (0) 1723 470010 | W: uk.angloamerican.com

Drawing Title: **WOODSMITH PROJECT
 CONSTRUCTION PHASE
 PROCESS AND FIREWATER
 TANKS LVIA**
**PHOTOMONTAGE VIEW 12
 FROM ROBIN HOOD'S BAY ROAD**

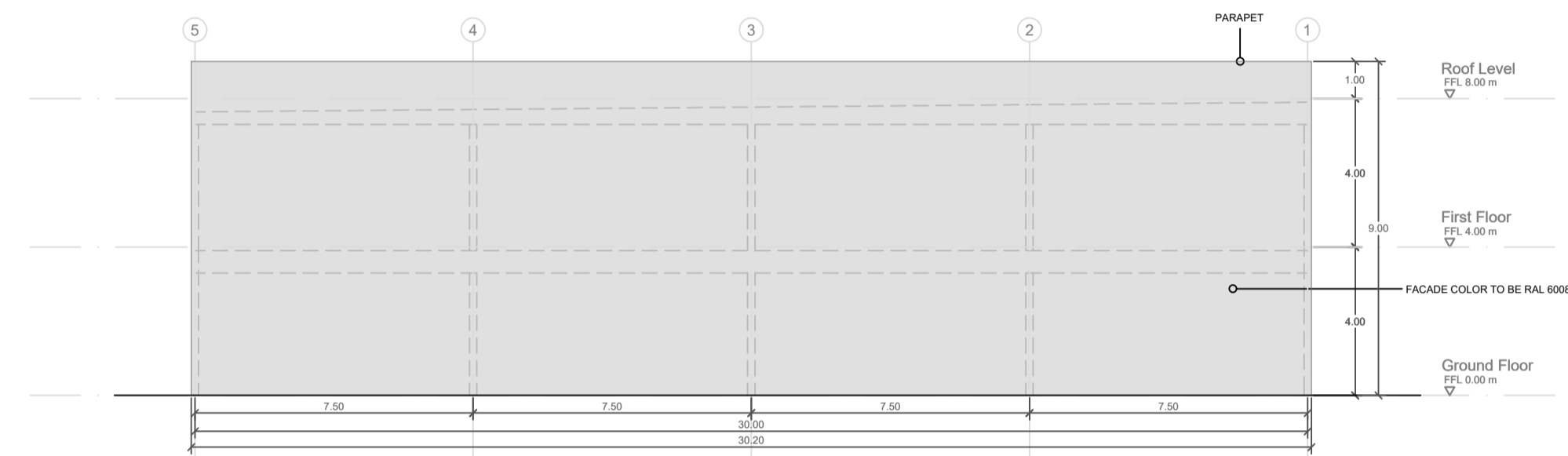
SCALE @ A3: N/A

CONT No:	
Package No:	P0902
DRG No:	1580-WOB-CI-31-00003
REV	B

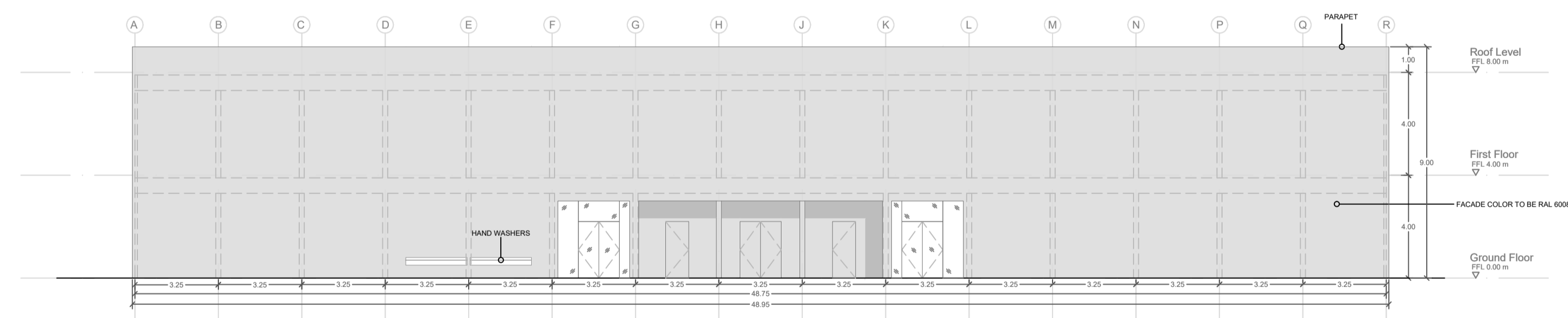




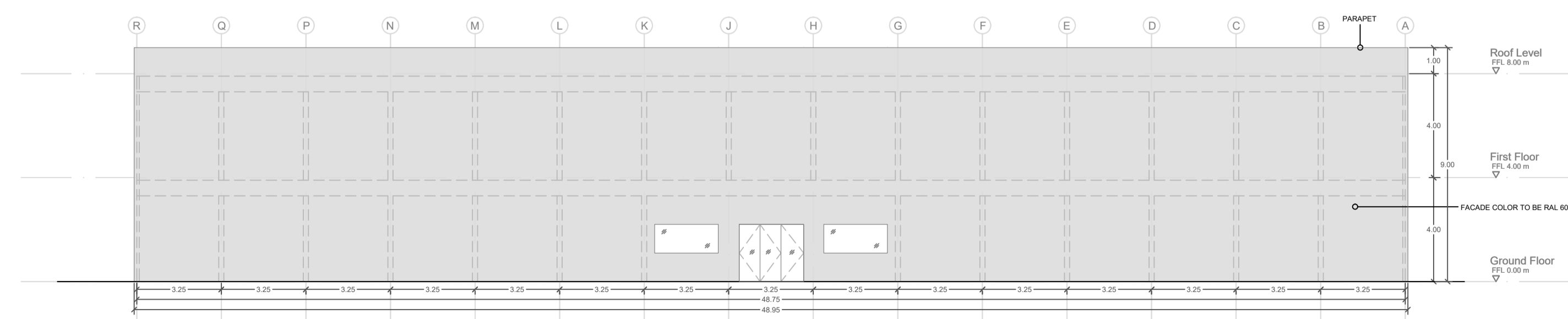
01 SOUTH ELEVATION



02 NORTH ELEVATION



03 WEST ELEVATION



04 EAST ELEVATION

NY MNPA

10/02/2023

AMENDED

*NOTES:
- Dimensions are indicative only and to be confirm by manufacturer.

Draft for Review				
Revision	Date	By	CHKD	APPD
A	26/01/23	AP	IM	RP



Drawing Title: **Change House Architectural Layout (Sheet 3) Elevations**

SCALE: 1: 100

CONT No:

EWP No: P0902

DRG No: 7218-WOB-AR-18-00003



REV A



PIMS CERTIFICATION
DRAWINGS ARE NOT VALID UNLESS THEY
CONTAIN A PIMS AUTHORISATION STAMP

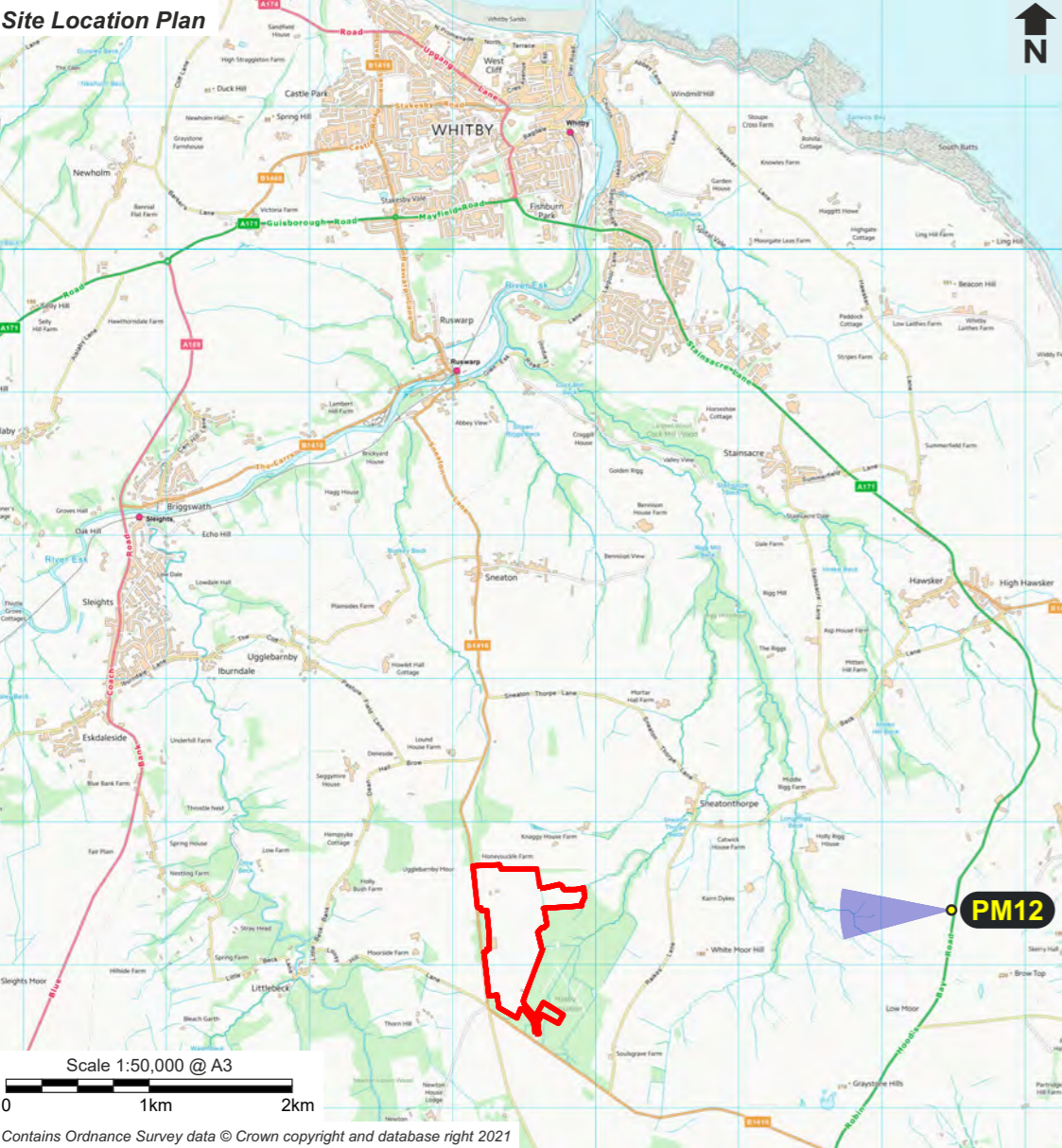
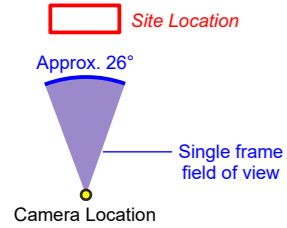
© 2022 Anglo American Woodsmith Limited. This document contains intellectual property of Anglo American Woodsmith Limited and/or its affiliates and is subject to legal restrictions as to its use. Recipients may not copy, distribute, disseminate, disclose or otherwise use this document or the contents hereof except as is specifically authorized by Anglo American Woodsmith Limited.

THIS DRAWING IS CONFIDENTIAL AND THE PROPERTY OF ANGLO AMERICAN PLC. IT MUST NOT BE COPIED WITHOUT WRITTEN CONSENT

Grid reference: E492500 N505394
 Elevation: 198m AOD
 Direction of centre of view: 268°
 Horizontal field of view: Approx. 26°
 Distance to site boundary: 2560m

Camera body: Canon 5D, Mark IV
 Lens: 150mm
 Camera height above ground level: 1.5m
 Time and date of photo: 4pm, 25/08/2022
 Weather conditions: Dry & cloudy, clear visibility

Correct Viewing Distance
 Print at A3 sheet size, view with both eyes at 500mm distance to form a representation of the real scene.



© 2023 Anglo American Woodsmith Limited. This document contains intellectual property of Anglo American Woodsmith Limited and/or its affiliates and is subject to legal restrictions as to its use. Recipients may not copy, distribute, disseminate, disclose or otherwise use this document or the contents hereof except as is specifically authorized by Anglo American Woodsmith Limited.

THIS DRAWING IS CONFIDENTIAL AND THE PROPERTY OF ANGLO AMERICAN PLC - IT MUST NOT BE COPIED WITHOUT WRITTEN CONSENT

AMENDED

NYMNPA
 10/02/2023

View 12: Current View



A(IFR)	30/01/2023	WM	SME	BMA
Revision Description REVIEW				
REV	DATE	BY	CHKD	APPD

AngloAmerican
 Anglo American Woodsmith Limited
 Resolution House | Lake View | Scarborough | YO11 3ZB | North Yorkshire
 T: +44 (0) 1723 470010 | W: uk.angloamerican.com

Drawing Title: **WOODSMITH PROJECT
 CONSTRUCTION PHASE
 CHANGE HOUSE LVIA**

**PHOTOMONTAGE VIEW 12
 FROM ROBIN HOOD'S BAY ROAD**

SCALE @ A3: N/A

CONT No: _____

Package No: P0902

DRG No: 7218-WOB-CI-31-00001

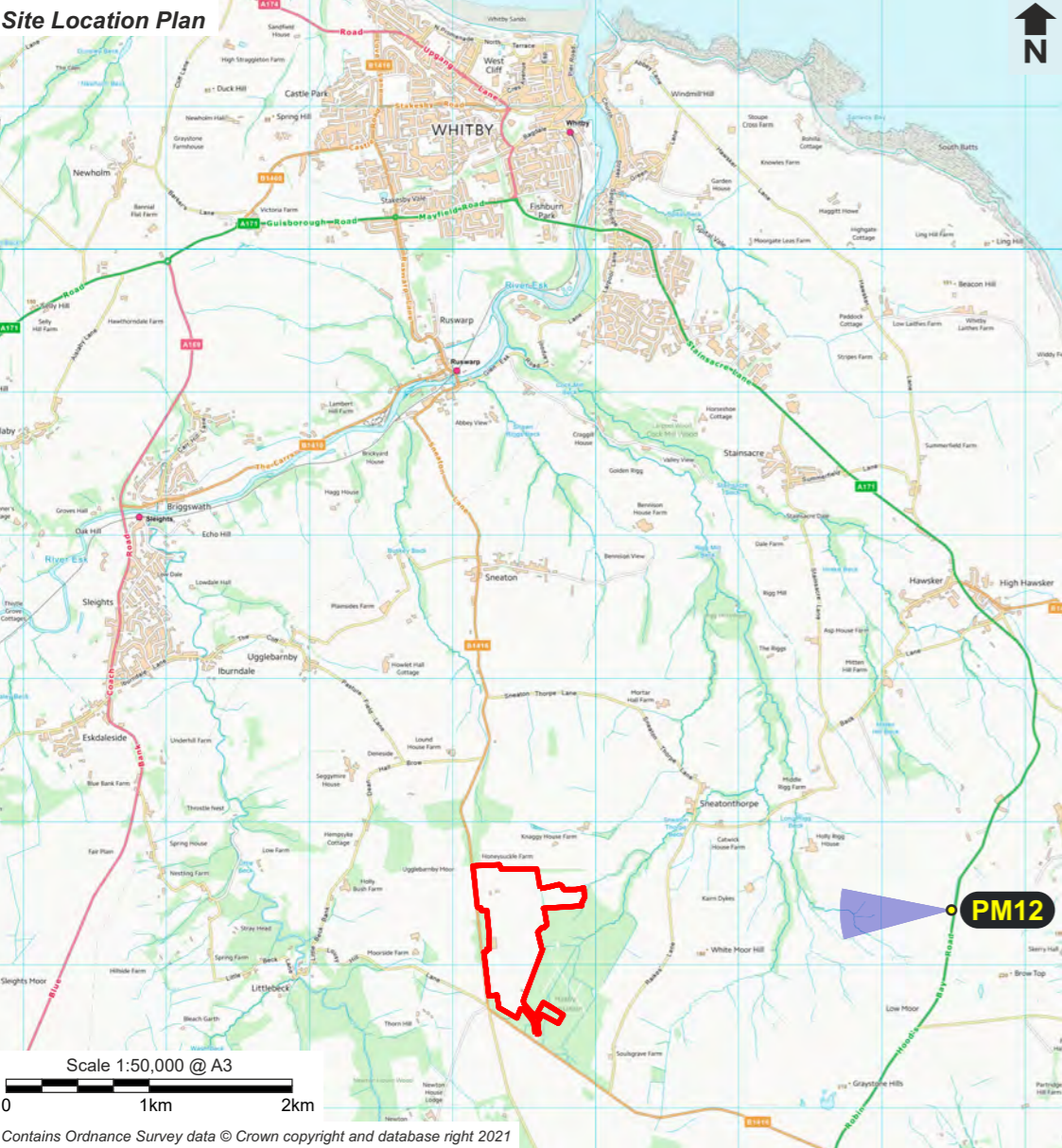
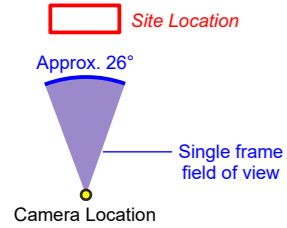
REV A



Grid reference: E492500 N505394
 Elevation: 198m AOD
 Direction of centre of view: 268°
 Horizontal field of view: Approx. 26°
 Distance to site boundary: 2560m

Camera body: Canon 5D, Mark IV
 Lens: 150mm
 Camera height above ground level: 1.5m
 Time and date of photo: 4pm, 25/08/2022
 Weather conditions: Dry & cloudy, clear visibility

Correct Viewing Distance
 Print at A3 sheet size, view with both eyes at 500mm distance to form a representation of the real scene.



© 2023 Anglo American Woodsmith Limited. This document contains intellectual property of Anglo American Woodsmith Limited and/or its affiliates and is subject to legal restrictions as to its use. Recipients may not copy, distribute, disseminate, disclose or otherwise use this document or the contents hereof except as is specifically authorized by Anglo American Woodsmith Limited.

THIS DRAWING IS CONFIDENTIAL AND THE PROPERTY OF ANGLO AMERICAN PLC - IT MUST NOT BE COPIED WITHOUT WRITTEN CONSENT

AMENDED

NYMNPA
 10/02/2023

View 12: Post-Construction View



--	--	--	--	--

A(IFR)	30/01/2023	WM	SME	BMA
--------	------------	----	-----	-----

Revision Description
 REVIEW

REV	DATE	BY	CHKD	APPD
-----	------	----	------	------



Anglo American Woodsmith Limited
 Resolution House | Lake View | Scarborough | YO11 3ZB | North Yorkshire
 T: +44 (0) 1723 470010 | W: uk.angloamerican.com

Drawing Title: **WOODSMITH PROJECT
 CONSTRUCTION PHASE
 CHANGE HOUSE LVIA**

**PHOTOMONTAGE VIEW 12
 FROM ROBIN HOOD'S BAY ROAD**

SCALE @ A3: N/A

CONT No:

Package No:
 P0902

DRG No:
 7218-WOB-CI-31-00002

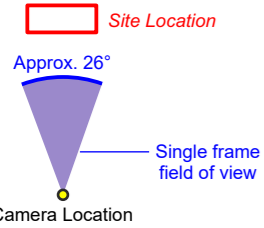


REV
 A

Grid reference: E492500 N505394
 Elevation: 198m AOD
 Direction of centre of view: 268°
 Horizontal field of view: Approx. 26°
 Distance to site boundary: 2560m

Camera body: Canon 5D, Mark IV
 Lens: 150mm
 Camera height above ground level: 1.5m
 Time and date of photo: 4pm, 25/08/2022
 Weather conditions: Dry & cloudy, clear visibility

Correct Viewing Distance
 Print at A3 sheet size, view with both eyes at 500mm distance to form a representation of the real scene.



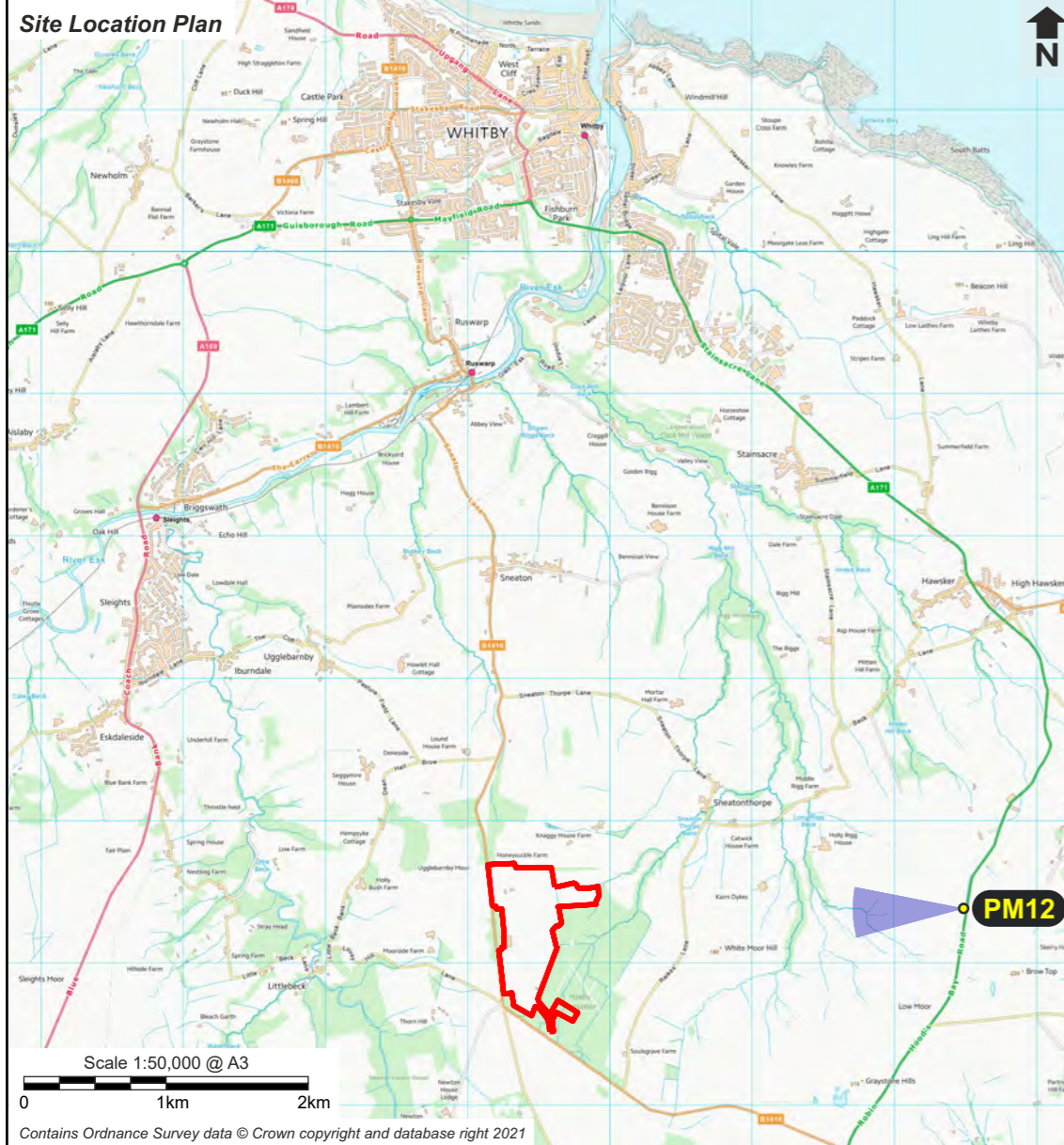
NYMNP
 10/02/2023

AMENDED

View 12: Post-Construction View With Development Outline



Building Key
 1 Change House



© 2023 Anglo American Woodsmith Limited. This document contains intellectual property of Anglo American Woodsmith Limited and/or its affiliates and is subject to legal restrictions as to its use. Recipients may not copy, distribute, disseminate, disclose or otherwise use this document or the contents hereof except as is specifically authorized by Anglo American Woodsmith Limited.

THIS DRAWING IS CONFIDENTIAL AND THE PROPERTY OF ANGLO AMERICAN PLC - IT MUST NOT BE COPIED WITHOUT WRITTEN CONSENT

A(IFR)	30/01/2023	WM	SME	BMA
Revision Description REVIEW				
REV	DATE	BY	CHKD	APPD

AngloAmerican
 Anglo American Woodsmith Limited
 Resolution House | Lake View | Scarborough | YO11 3ZB | North Yorkshire
 T: +44 (0) 1723 470010 | W: uk.angloamerican.com

Drawing Title: **WOODSMITH PROJECT
 CONSTRUCTION PHASE
 CHANGE HOUSE LVIA**

**PHOTOMONTAGE VIEW 12
 FROM ROBIN HOOD'S BAY ROAD**

SCALE @ A3: N/A

CONT No: _____

Package No: P0902

DRG No: 7218-WOB-CI-31-00003

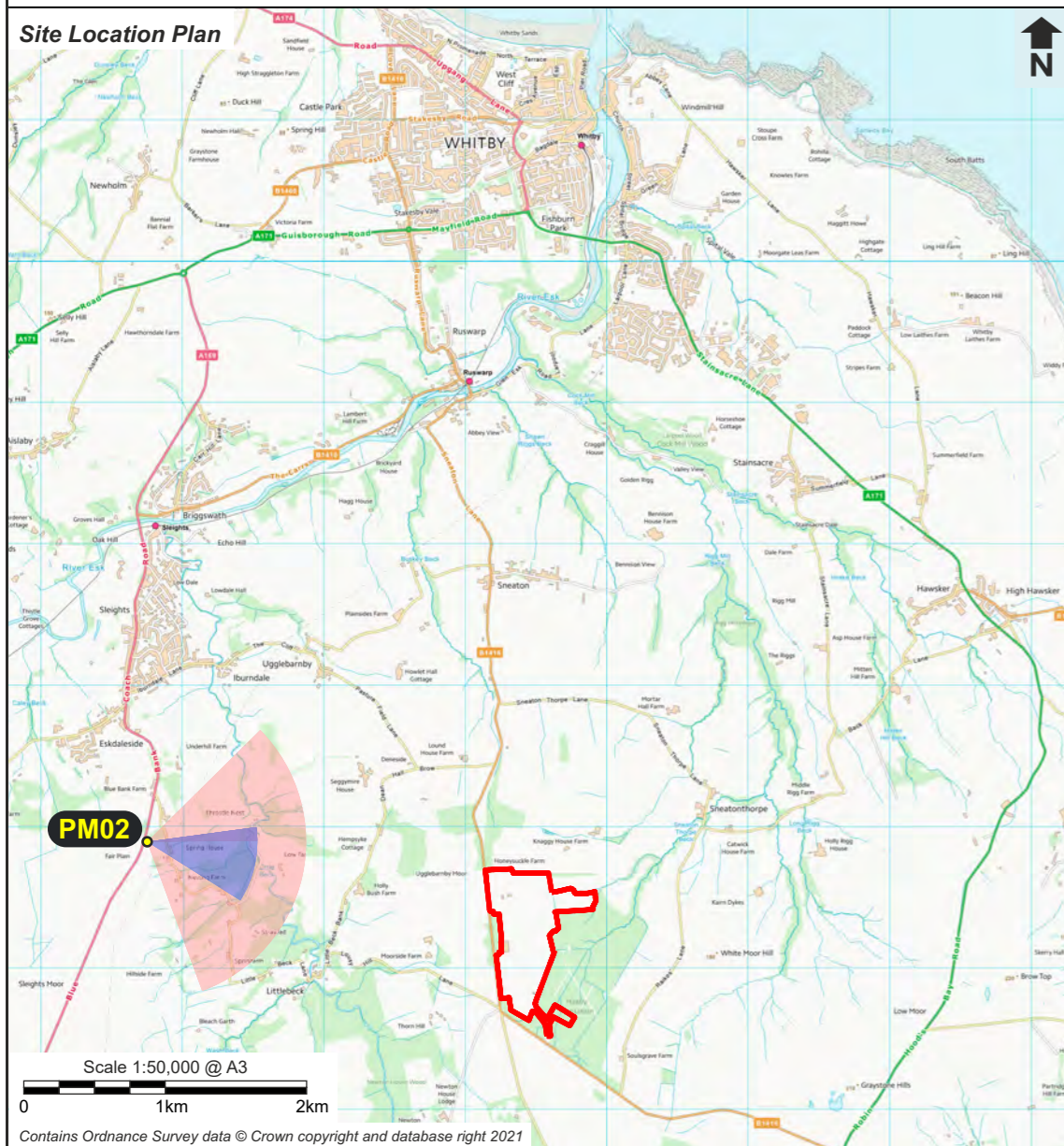
REV **A**





Approx. 103° East
Central image as used on subsequent pages

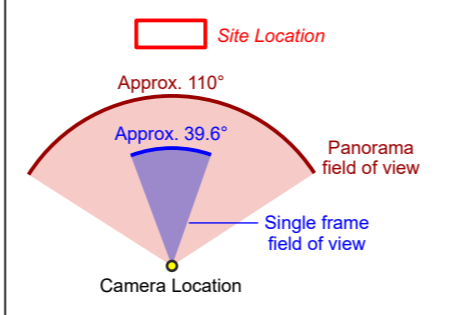
View 02: Location and Panoramic Context



Notes
The above panoramic image has been digitally merged together from multiple photographs. It shows the broader context of the single frame image shown on the following pages.
The horizontal field of view of the panoramic image has been shown below the image as degrees offset from the view centreline.
The horizontal extent of the single frame image is shown by the dashed box.

Grid reference: E486728 N505824
Elevation: 186m AOD
Direction of centre of view: 103°
Horizontal field of view: Approx. 110°
Distance to site boundary: 2425m

Camera body: Canon Powershot SX540HS
Lens: 24mm wide
Camera height above ground level: 1.7m
Time and date of photo: 4:04pm, 14/06/2022
Weather conditions: Cloudy, clear visibility



© 2023 Anglo American Woodsmith Limited. This document contains intellectual property of Anglo American Woodsmith Limited and/or its affiliates and is subject to legal restrictions as to its use. Recipients may not copy, distribute, disseminate, disclose or otherwise use this document or the contents hereof except as is specifically authorized by Anglo American Woodsmith Limited.

THIS DRAWING IS CONFIDENTIAL AND THE PROPERTY OF ANGLO AMERICAN PLC - IT MUST NOT BE COPIED WITHOUT WRITTEN CONSENT

AMENDED

NYMNP
10/02/2023

A(IFR)	30/01/2023	WM	SME	BMA
Revision Description				
REV	DATE	BY	CHKD	APPD
Anglo American Woodsmith Limited Resolution House Lake View Scarborough YO11 3ZB North Yorkshire T: +44 (0) 1723 470010 W: uk.angloamerican.com				
Drawing Title: WOODSMITH PROJECT CONSTRUCTION PHASE CHANGE HOUSE LVIA				
PHOTOMONTAGE VIEW 02 FROM BLUE BANK CAR PARK OFF A169				
SCALE @ A3: N/A				
CONT No:				
Package No: P0902				
DRG No:				
7218-WOB-CI-31-00004				REV
				A



View 02:
Current View

NYMNP
 10/02/2023

AMENDED

Grid reference: E486728 N505824
Elevation: 186m AOD
Direction of centre of view: 103°
Horizontal field of view: Approx. 110°
Distance to site boundary: 2425m

Camera body: Canon Powershot SX540HS
Lens: 24mm wide
Camera height above ground level: 1.7m
Time and date of photo: 4:04pm, 14/06/2022
Weather conditions: Cloudy, clear visibility

Correct Viewing Distance
 Print at A3 sheet size, view with both eyes at 500mm distance to form a representation of the real scene.

A(IFR)	30/01/2023	WM	SME	BMA
Revision Description				
REVIEW				
REV	DATE	BY	CHKD	APPD



Anglo American Woodsmith Limited
 Resolution House | Lake View | Scarborough | YO11 3ZB | North Yorkshire
 T: +44 (0) 1723 470010 | W: uk.angloamerican.com

Drawing Title: WOODSMITH PROJECT
 CONSTRUCTION PHASE
 CHANGE HOUSE LVIA

PHOTOMONTAGE VIEW 02
 FROM BLUE BANK CAR PARK OFF A169

SCALE @ A3: N/A

CONT No:	
Package No:	
DRG No:	REV
7218-WOB-CI-31-00005	A

© 2023 Anglo American Woodsmith Limited. This document contains intellectual property of Anglo American Woodsmith Limited and/or its affiliates and is subject to legal restrictions as to its use. Recipients may not copy, distribute, disseminate, disclose or otherwise use this document or the contents hereof except as is specifically authorized by Anglo American Woodsmith Limited.

THIS DRAWING IS CONFIDENTIAL AND THE PROPERTY OF ANGLO AMERICAN PLC - IT MUST NOT BE COPIED WITHOUT WRITTEN CONSENT



View 02:
Post-Construction
View

NYMNP
 10/02/2023

AMENDED

Grid reference: E486728 N505824
Elevation: 186m AOD
Direction of centre of view: 103°
Horizontal field of view: Approx. 110°
Distance to site boundary: 2425m

Camera body: Canon Powershot SX540HS
Lens: 24mm wide
Camera height above ground level: 1.7m
Time and date of photo: 4:04pm, 14/06/2022
Weather conditions: Cloudy, clear visibility

Correct Viewing Distance
 Print at A3 sheet size, view with both eyes at 500mm distance to form a representation of the real scene.

A(IFR)	30/01/2023	WM	SME	BMA
Revision Description REVIEW				
REV	DATE	BY	CHKD	APPD



Anglo American Woodsmith Limited
 Resolution House | Lake View | Scarborough | YO11 3ZB | North Yorkshire
 T: +44 (0) 1723 470010 | W: uk.angloamerican.com

Drawing Title: **WOODSMITH PROJECT
 CONSTRUCTION PHASE
 CHANGE HOUSE LVIA**

PHOTOMONTAGE VIEW 02
 FROM BLUE BANK CAR PARK OFF A169

SCALE @ A3: N/A

CONT No:	
Package No: P0902	
DRG No: 7218-WOB-CI-31-00006	
REV A	

© 2023 Anglo American Woodsmith Limited. This document contains intellectual property of Anglo American Woodsmith Limited and/or its affiliates and is subject to legal restrictions as to its use. Recipients may not copy, distribute, disseminate, disclose or otherwise use this document or the contents hereof except as is specifically authorized by Anglo American Woodsmith Limited.

THIS DRAWING IS CONFIDENTIAL AND THE PROPERTY OF ANGLO AMERICAN PLC - IT MUST NOT BE COPIED WITHOUT WRITTEN CONSENT



View 02: Post-Construction View With Development Outline

Building Key

1 Change House

NYMNP
 10/02/2023

AMENDED

Grid reference: E486728 N505824
Elevation: 186m AOD
Direction of centre of view: 103°
Horizontal field of view: Approx. 110°
Distance to site boundary: 2425m

Camera body: Canon Powershot SX540HS
Lens: 24mm wide
Camera height above ground level: 1.7m
Time and date of photo: 4:04pm, 14/06/2022
Weather conditions: Cloudy, clear visibility

Correct Viewing Distance
 Print at A3 sheet size, view with both eyes at 500mm distance to form a representation of the real scene.

A(IFR)	30/01/2023	WM	SME	BMA
Revision Description				
REVIEW				
REV	DATE	BY	CHKD	APPD



Anglo American Woodsmith Limited
 Resolution House | Lake View | Scarborough | YO11 3ZB | North Yorkshire
 T: +44 (0) 1723 470010 | W: uk.angloamerican.com

Drawing Title: WOODSMITH PROJECT
 CONSTRUCTION PHASE
 CHANGE HOUSE LVIA

PHOTOMONTAGE VIEW 02
 FROM BLUE BANK CAR PARK OFF A169

SCALE @ A3: N/A

CONT No:	
Package No:	
DRG No:	REV
7218-WOB-CI-31-00007	A

© 2023 Anglo American Woodsmith Limited. This document contains intellectual property of Anglo American Woodsmith Limited and/or its affiliates and is subject to legal restrictions as to its use. Recipients may not copy, distribute, disseminate, disclose or otherwise use this document or the contents hereof except as is specifically authorized by Anglo American Woodsmith Limited.

THIS DRAWING IS CONFIDENTIAL AND THE PROPERTY OF ANGLO AMERICAN PLC - IT MUST NOT BE COPIED WITHOUT WRITTEN CONSENT

AMENDED

NYMNP
10/02/2023

