

- NOTES:**
- All levels shown are above ordnance datum (AOD)
 - All coordinates are in metres relative to ordnance survey national grid.
 - All dimensions are in metres
 - Do not scale from this drawing. Do not take digital dimensions off this drawing. Work to figured dimensions only - if in doubt ask
 - Indicative Water Tank Zone consists Baker Tanks

- Legend - Existing Site Features**
- Land Ownership Boundary
 - Site Boundary
 - Existing Site Fence
 - Existing Public Footpath
 - Existing Sewer Route (6000 U/G)
 - Existing Access Road
 - Attenuation Pond

- Legend - Phase 7 Works**
- Previous Planning Phases
 - Phase 7

- Related Documents**
- 40-ST5-LC-2100-CN-MS-00008 Construction Method Statement Phase 7 - Ladycross Plantation
 - 40-ST5-LC-2100-EN-PL-00032 Construction Environmental Management Plan Phase 7 - NYMNP Condition 93 Ladycross Plantation

- Related Drawings**
- 40-ST5-LC-2100-PA-22-20120 Ladycross Plantation Phase 7 Phasing Plan
 - 40-ST5-LC-2100-PA-22-20121 Ladycross Plantation Phase 7 Hard & Soft Landscape
 - 40-ST5-LC-2100-PA-22-20122 Ladycross Plantation Phase 7 General Arrangement

CLIENT REVIEW

C (PLA)	27.07.2023	LB	LL	CT
B (PLA)	06.07.2023	LB	LL	CT
A (PLA)	21.06.2023	LB	LL	CT

INTERNAL REVIEW

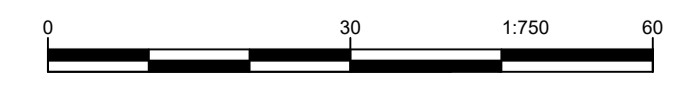
A2 (PLA)	21.06.2023	LB	LL	CT
A1 (PLA)	08.06.2023	LB	LL	CT



Drawing Title: Ladycross Plantation Phase 7 Phasing Plan
 SCALE: 1:750

Project: WOODSMITH PROJECT
 Drawing No: 40-ST5-LC-2100-PA-22-20120
 REV: C

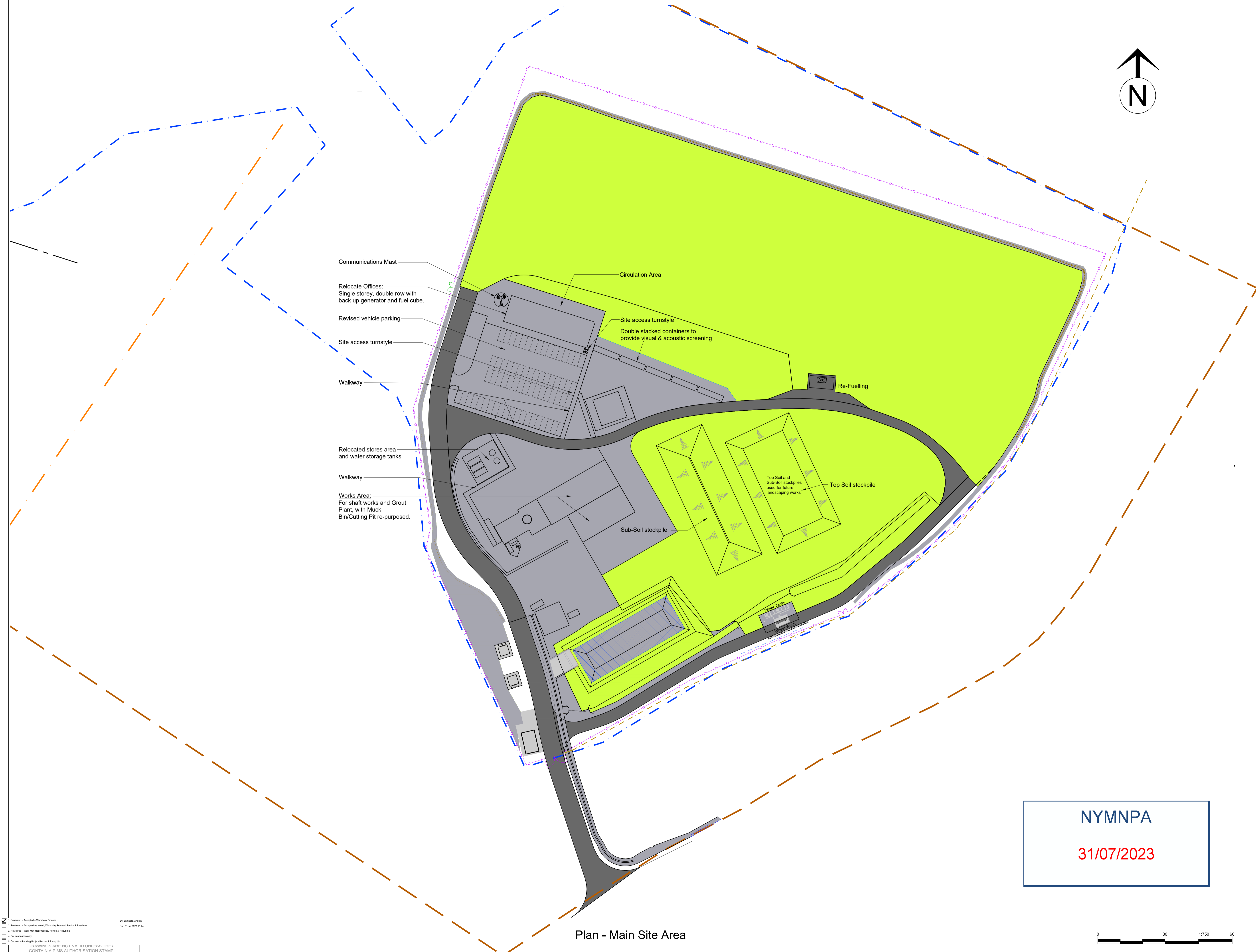
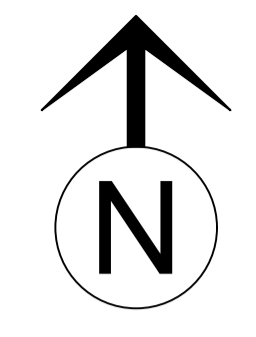
NYMNP
 31/07/2023



Plan - Main Site Area

By: Semaiah, Angelo
 On: 31.07.2023 15:17
 CONTAIN A PIMS AUTHORIZATION STAMP

- NOTES:**
- All levels shown are above ordnance datum (AOD)
 - All coordinates are in metres relative to ordnance survey national grid.
 - All dimensions are in metres
 - Do not scale from this drawing. Work to figured dimensions only - if in doubt ask
 - Indicative Water Tank Zone consists Baker Tanks



- Legend - Existing Site Features**
- Land Ownership Boundary
 - Site Boundary
 - Existing Site Fence
 - Existing Public Footpath
 - Existing Sewer Route (6000 U/G)
 - Existing Building
 - Visual Screen Option
 - Existing Access Road
 - Attenuation Pond

- Legend - Phase 7 Works**
- Landscaping - Hard
 - Landscaping - Soft

- Related Documents**
- 40-ST5-LC-2100-CN-MS-00008 Construction Method Statement Phase 7 - Ladycross Plantation
 - 40-ST5-LC-2100-EN-PL-00032 Construction Environmental Management Plan Phase 7 - NYMNPFA Condition 93 Ladycross Plantation

- Related Drawings**
- 40-ST5-LC-2100-PA-22-20120 Ladycross Plantation Phase 7 Phasing Plan
 - 40-ST5-LC-2100-PA-22-20121 Ladycross Plantation Phase 7 Hard & Soft Landscape
 - 40-ST5-LC-2100-PA-22-20122 Ladycross Plantation Phase 7 General Arrangement

CLIENT REVIEW

C (PLA)	27.07.2023	LB	LL	CT
	Client Review			
B (PLA)	08.07.2023	LB	LL	CT
	Client Review			
A (PLA)	21.06.2023	LB	LL	CT
	Client Review			

INTERNAL REVIEW

A1 (PLA)	21.06.2023	LB	LL	CT
	Internal Review			
REV	DATE	BY	CHKD	APPD

NYMNPFA

31/07/2023

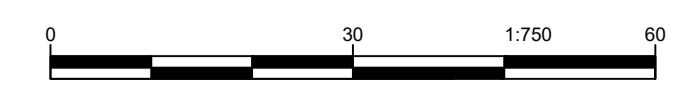


Drawing Title: Ladycross Plantation Phase 7 Hard & Soft Landscaping
 SCALE: 1:750
 Project: WOODSMITH PROJECT

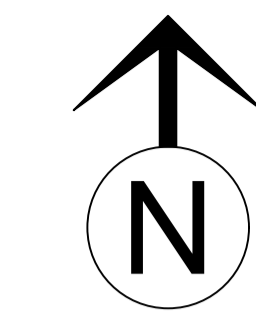
DRG No: 40-ST5-LC-2100-PA-22-20121
 REV: C

Reviewed - Accepted - Work May Proceed
 Reviewed - Accepted As-Noted - Work May Proceed, Review & Resubmit
 Reviewed - Work May Not Proceed - Review & Resubmit
 For Information Only
 On Hold - Pending Project Restart & Re-approvals
 DRAWINGS ARE NOT VALID UNLESS THEY CONTAIN A PIMS AUTHORISATION STAMP
 THIS DRAWING IS CONFIDENTIAL AND THE PROPERTY OF ANGLO AMERICAN PLC. IT MUST NOT BE COPIED WITHOUT ANGLO AMERICAN'S CONSENT

Plan - Main Site Area



- NOTES:**
- All levels shown are above ordnance datum (AOD)
 - All coordinates are in metres relative to ordnance survey national grid.
 - All dimensions are in metres
 - Do not scale from this drawing. Do not take digital dimensions off this drawing. Work to figured dimensions only - if in doubt ask
 - Indicative Water Tank Zone consists Baker Tanks.



- Legend - Existing Site Features**
- Land Ownership Boundary
 - Site Boundary
 - Existing Site Fence
 - Existing Public Footpath
 - Existing Sewer Route (6000 U/G)
 - Building

- Related Documents**
- 40-ST5-LC-2100-CN-MS-00008 Construction Method Statement Phase 7 - Ladycross Plantation
 - 40-ST5-LC-2100-EN-PL-00032 Construction Environmental Management Plan Phase 7 - NYMNPFA Condition 93 Ladycross Plantation

- Related Drawings**
- 40-ST5-LC-2100-PA-22-20120 Ladycross Plantation Phase 7 Phasing Plan
 - 40-ST5-LC-2100-PA-22-20121 Ladycross Plantation Phase 7 Hard & Soft Landscape
 - 40-ST5-LC-2100-PA-22-20122 Ladycross Plantation Phase 7 General Arrangement

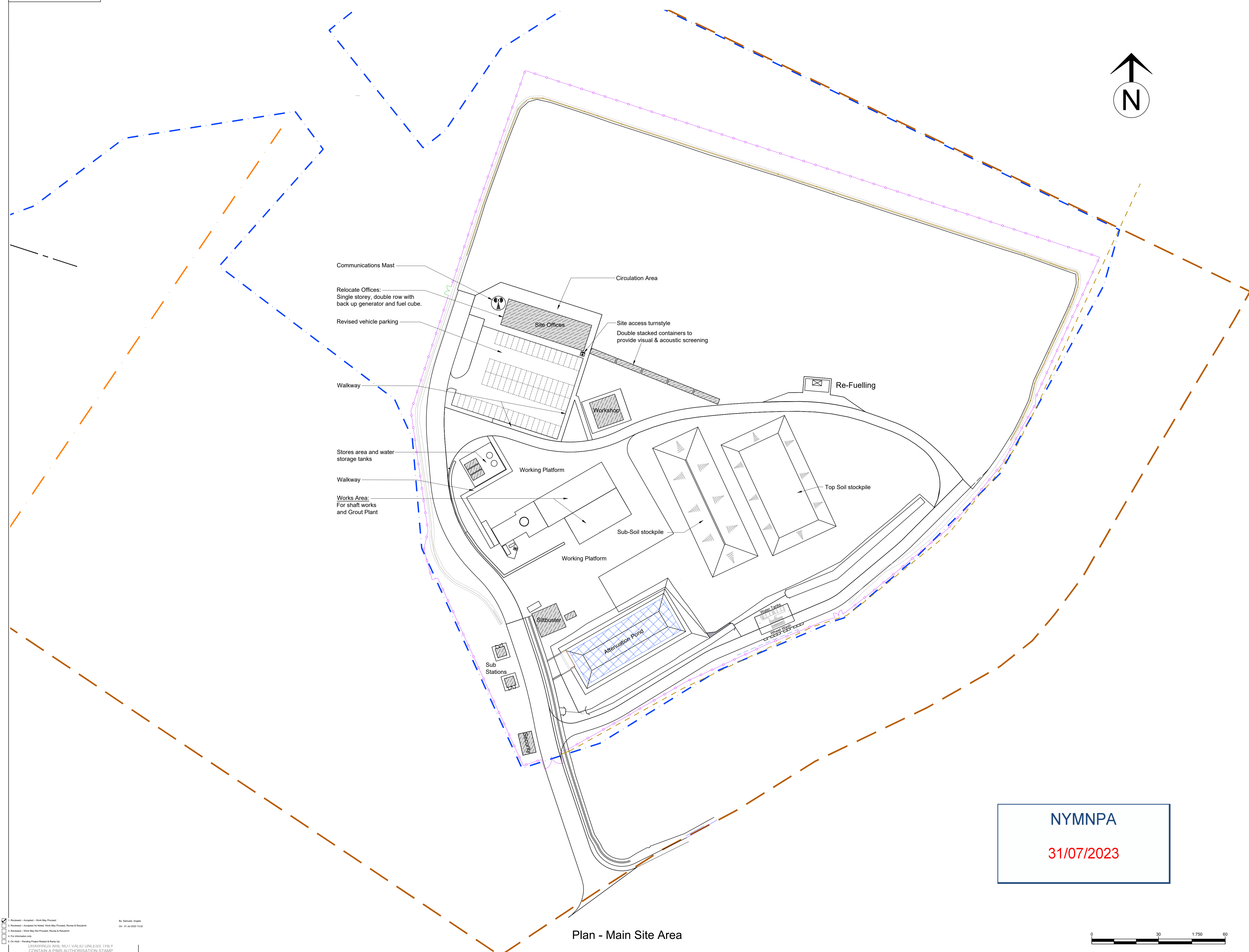
CLIENT REVIEW				
C (PLA)	27.07.2023	LB	LL	CT
Client Review				
B (PLA)	08.03.2022	LB	LL	CT
Client Review				
A (PLA)	21.06.2023	LB	LL	CT
Client Review				

INTERNAL REVIEW				
A1 (PLA)	21.06.2023	LB	LL	CT
Internal Review				
REV	DATE	BY	CHKD	APPD



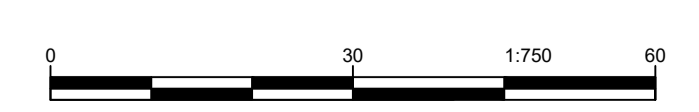
Drawing Title: Ladycross Plantation Phase 7 General Arrangement
 SCALE: 1:750
 Project: WOODSMITH PROJECT

DRG No: 40-ST5-LC-2100-PA-22-20122
 REV: C



Plan - Main Site Area

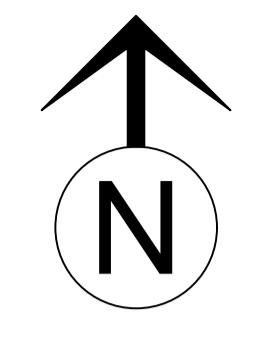
NYMNPFA
31/07/2023



Reviewed - Accepted - Work May Proceed
 Reviewed - Accepted As Noted - Work May Proceed, Review & Resubmit
 Reviewed - Work May Not Proceed - Review & Resubmit
 For Information Only
 On Hold - Pending Project Restart & Ramp Up
 DRAWINGS ARE NOT VALID UNLESS THEY CONTAIN A PIMS AUTHORISATION STAMP
 THE COMPANY IS CONFIDENTIAL AND THE PROPERTY OF ANGLO AMERICAN PLC. IT MUST NOT BE COPIED WITHOUT ANGLO AMER'S CONSENT

By: Serkan, Angelo
 On: 31 Jul 2023 13:32

- NOTES:**
- All levels shown are above ordnance datum (AOD)
 - All coordinates are in metres relative to ordnance survey national grid.
 - All dimensions are in metres
 - Do not scale from this drawing. Work to figured dimensions only - if in doubt ask
 - Indicative Water Tank Zone consists Baker Tanks



- Legend - Site Features**
- Land Ownership Boundary
 - Site Boundary
 - Existing Site Fence
 - Existing Public Footpath
 - Existing Sewer Route (6000 U/G)
 - Carrier Pipe with manholes
 - Swale or Ditch
 - Perimeter Ditch
 - Filter Drain with Catch Pits
 - Silt Fence
 - Building

- Related Documents**
- 40-STSLC-2100-CNMS-00008 Construction Method Statement Phase 7 - Ladycross Plantation
 - 40-STSLC-2100-EN-PL-00032 Construction Environmental Management Plan Phase 7 - NYMNPFA Condition 93 Ladycross Plantation

- Related Drawings**
- 40-STSLC-2100-PA-22-20120 Ladycross Plantation Phase 7 Phasing Plan
 - 40-STSLC-2100-PA-22-20121 Ladycross Plantation Phase 7 Hard & Soft Landscape
 - 40-STSLC-2100-PA-22-20122 Ladycross Plantation Phase 7 General Arrangement

CLIENT REVIEW				
B (PLA)	27.07.2023	LB	LL	CT

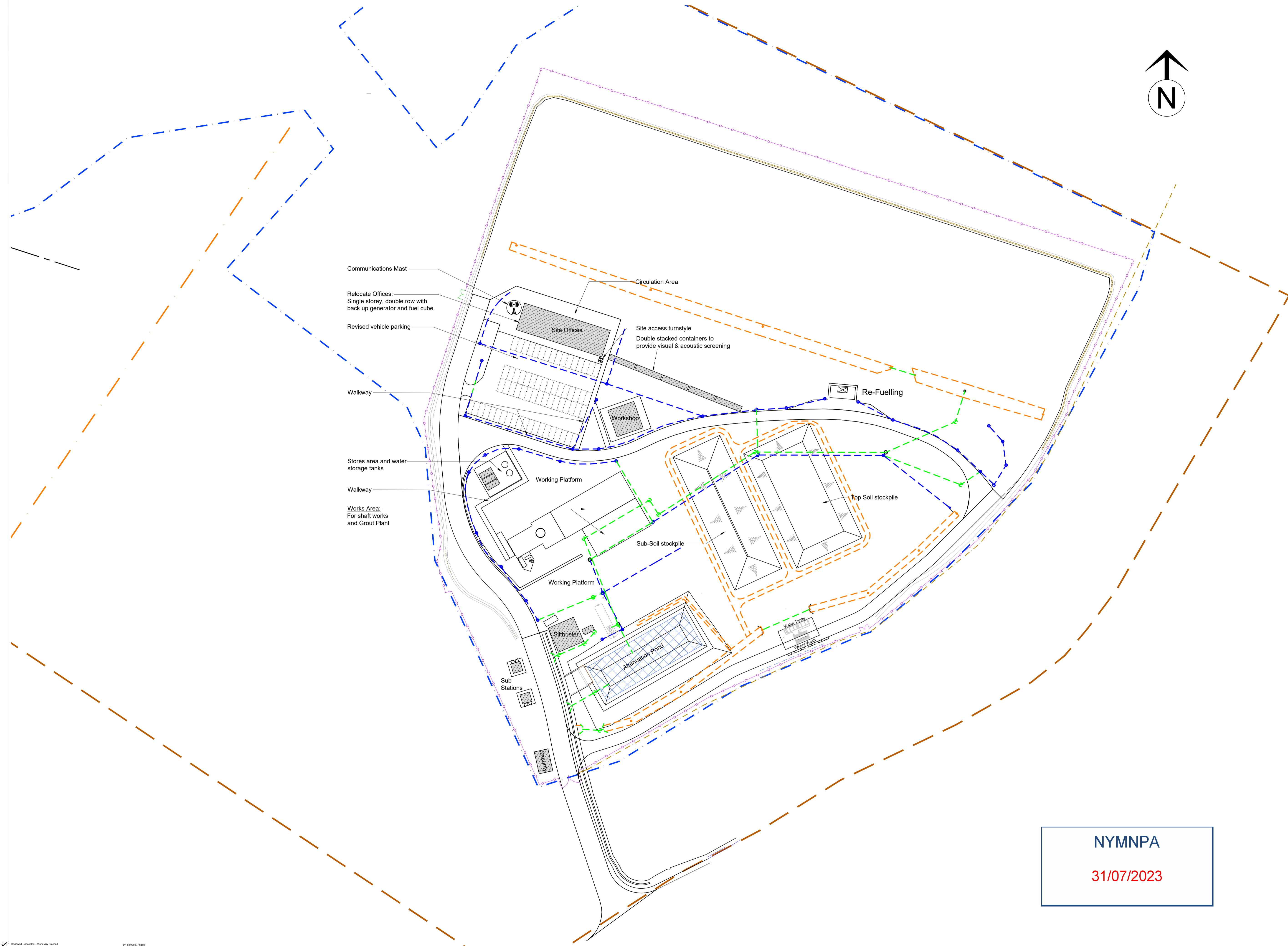
CLIENT REVIEW				
A (PLA)	06.07.2023	LB	PG	CF
REV	DATE	BY	CHKD	APPD



Drawing Title: Ladycross Plantation Phase 7 General Arrangement Drainage Layout
SCALE: 1:750

Project: WOODSMITH PROJECT **STRABAG**

DRG No: 40-STSLC-2100-PA-22-20123 REV: B



Communications Mast

Relocate Offices:
Single storey, double row with
back up generator and fuel cube.

Revised vehicle parking

Walkway

Stores area and water
storage tanks

Walkway

Works Area:
For shaft works
and Grout Plant

Circulation Area

Site Offices

Site access turnstile

Double stacked containers to
provide visual & acoustic screening

Workshop

Re-Fuelling

Working Platform

Top Soil stockpile

Sub-Soil stockpile

Working Platform

Siltbuster

Sub Stations

Attenuation Pond

Water Tank

Shed Wash

Plan - Main Site Area

NYMNPFA

31/07/2023

