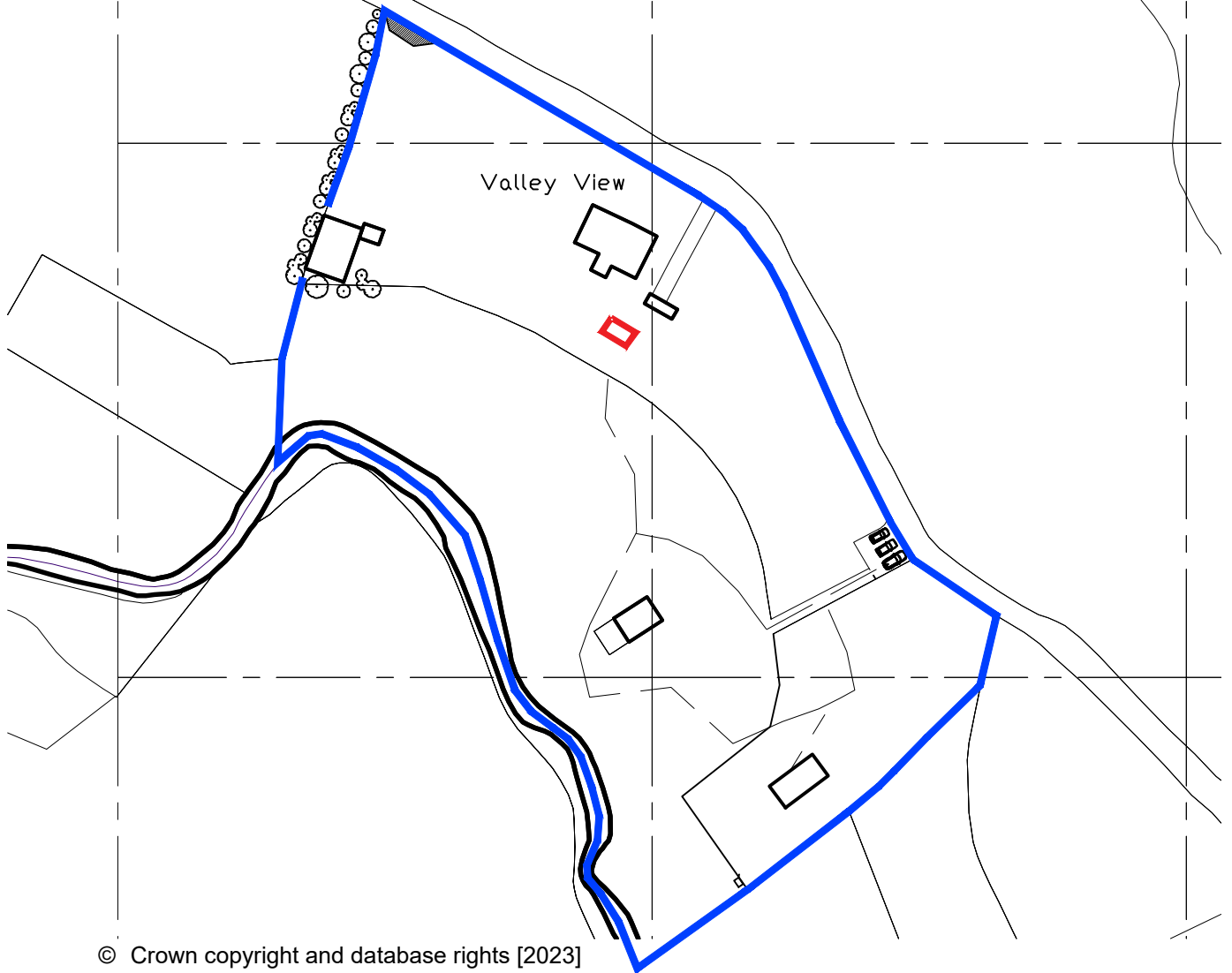


NYMNPA

29/11/2023



© Crown copyright and database rights [2023]
Ordnance Survey 0100031673

TP1 24/11/23 Town Planning Submission

GR ER

rev date description

drawn checked

dwg no. job no. 01065

001

Valley View, Golden grove

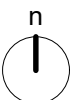
Site Location Plan

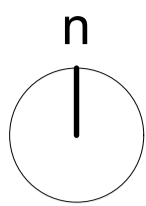
Drawing Scale 1:1250 @ A4

Reed Studio | Keelham Cottage | Keelham Lane | OL14 8RX

©2023 do not scale from drawing report discrepancies immediately

**Reed
Studio**





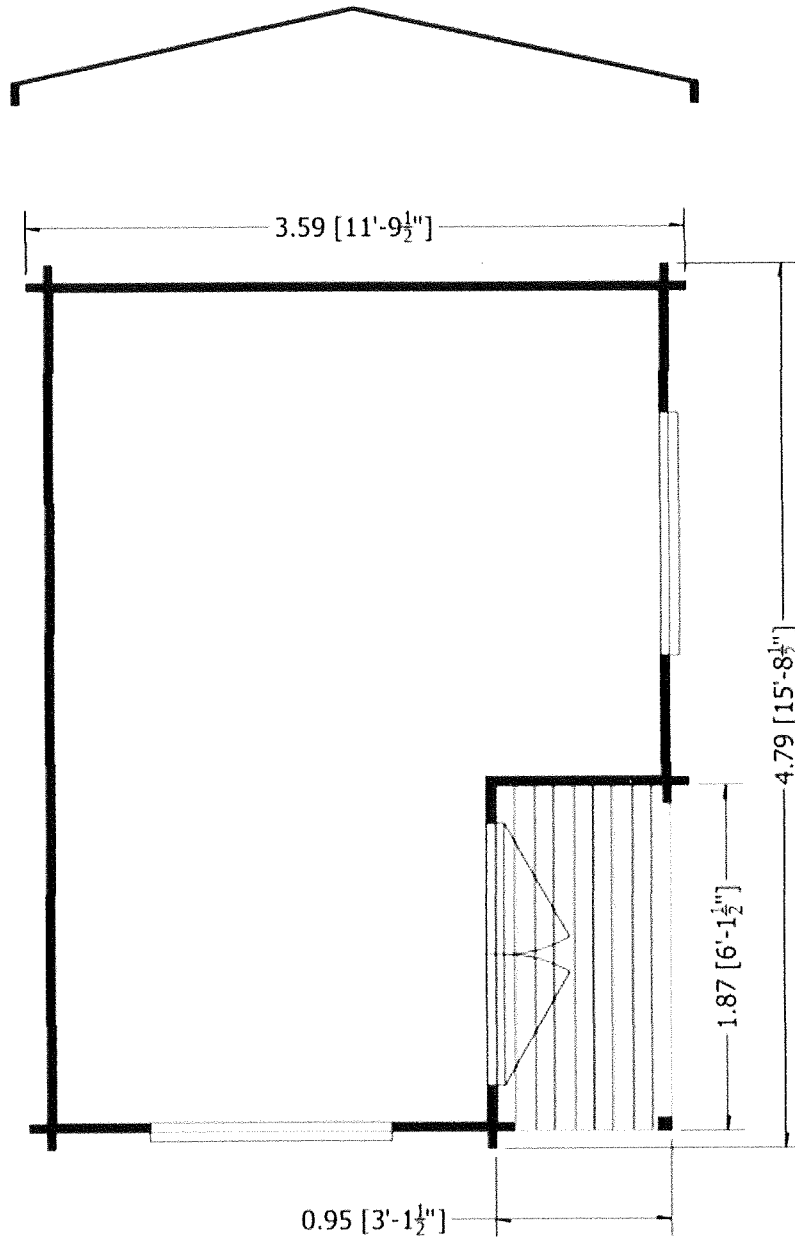
NYMNPA
29/11/2023



508300

| | | | | |
|---------|--------|---------------------------|-------|---------|
| TP1 | 241123 | Town planning submission | GR | ER |
| rev | date | description | drawn | checked |
| dwg no. | | job no. 01065 | | |
| | | Valley View, Golden Grove | | |
| | | Site Plan | | |
| | | 1:500 @ A1 1:1000 @ A3 | | |

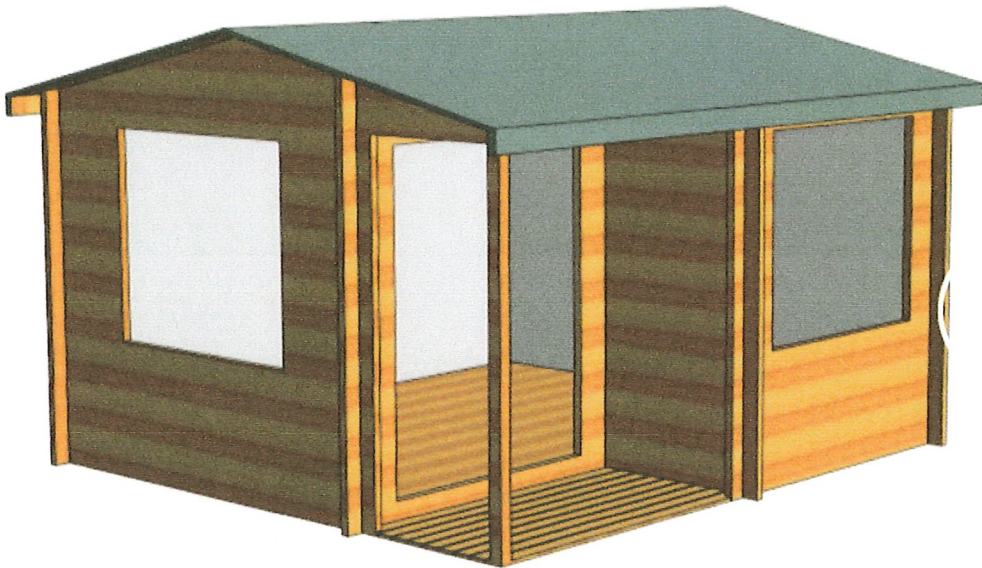
FLOOR PLAN



NYMNP

25/09/2023

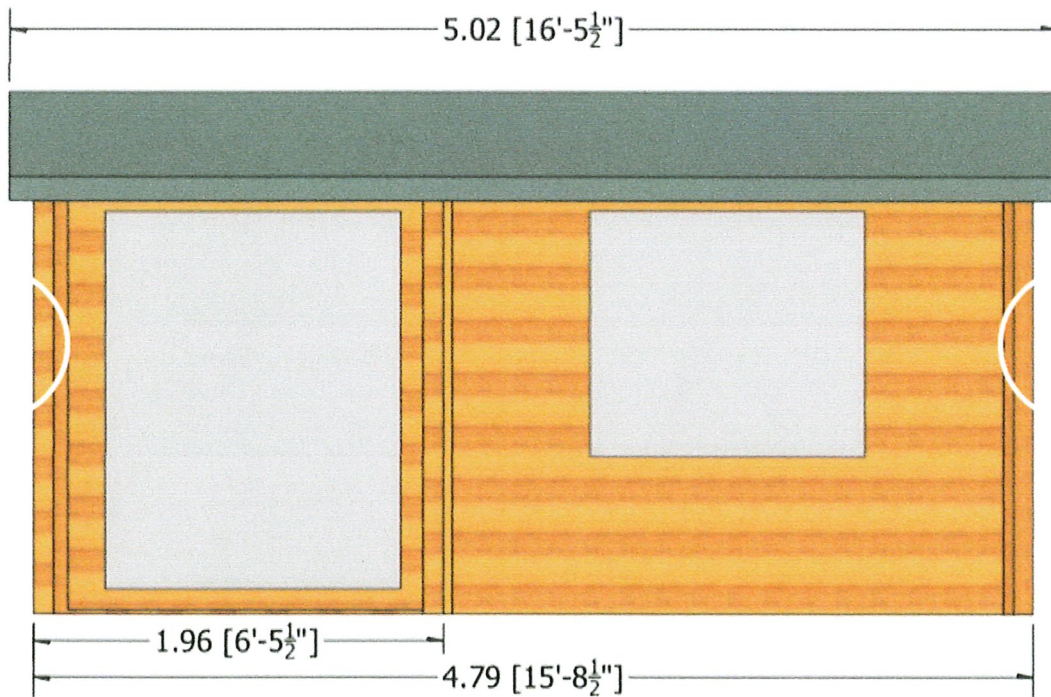
3D



NYMNP

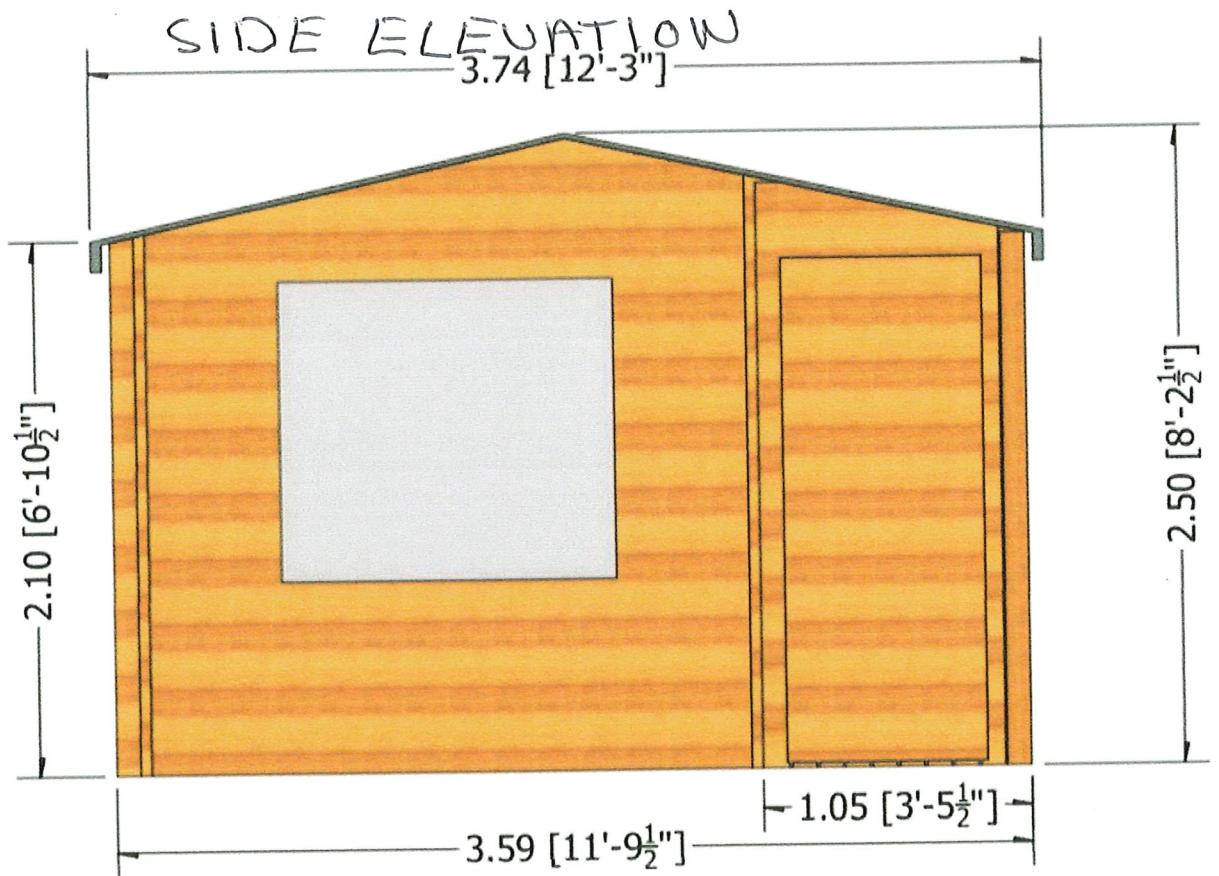
25/09/2023

FRONT ELEVATION



NYMNPA

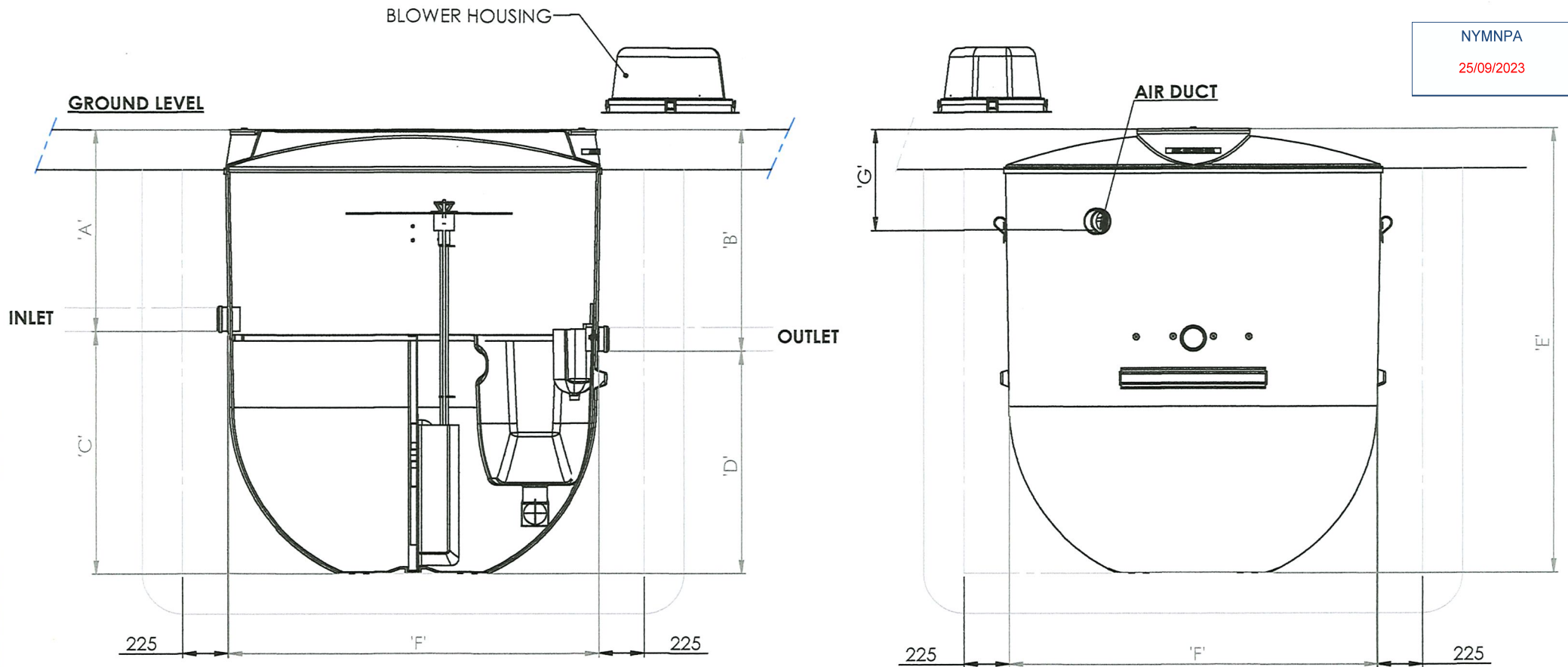
25/09/2023



Notes:

1. This drawing is for 'Dimensional Information Only', It is essential that this drawing is read in conjunction with the 'Installation Guidelines' supplied with the unit. (Copies available from our sales department).
2. All Pipe connections are \varnothing 110.0mm PVCu.
3. All units require appropriate 'Cover' & 'Frame' to suit site loadings (standard cover supplied).
4. Blower assembly mounted externally, within 10m of treatment plant.
5. \varnothing 160mm Inlet Option - By Exyernal Adaptor Only.

| Unit Dimension Chart | | | | | | | | |
|----------------------|-----------------|-----------------|-----------------|-----------------|-----------------|-----------------|-----------------|----------------------|
| Unit | Dim 'A' (mm) | Dim 'B' (mm) | Dim 'C' (mm) | Dim 'D' (mm) | Dim 'E' (mm) | Dim 'F' (mm) | Dim 'G' (mm) | Unit Weight (Kgs) |
| E006G10AB | 1000 | 1100 | 1200 | 1100 | 2200 | 1850 | 500 | 250 |
| E006G15AB | 1500 | 1600 | 1200 | 1100 | 2700 | 1850 | 500 | 270 |
| E009G10AB | 1000 | 1100 | 1700 | 1600 | 2700 | 1850 | 500 | 275 |
| E009G15AB | 1500 | 1600 | 1700 | 1600 | 3200 | 1850 | 500 | 295 |
| E012G10AB | 1000 | 1100 | 1700 | 1600 | 2700 | 1850 | 500 | 275 |
| E012G15AB | 1500 | 1600 | 1700 | 1600 | 3200 | 1850 | 500 | 295 |



| Please check with Clearwater that this drawing is the latest issue | | | | |
|--|----------|-----------|-------------|--|
| Issue | Date | Drawn by | Description | |
| 08 | 02.06.20 | Viaasan K | CC1523 | |
| 07 | 17/05/18 | M.H. | CC1435 | |

Material : Various
 Finish :
 Weight : 270.53 Kg Kgs

Tolerance :
 Thickness : n/a
 Surface Area :

Drawing : DS0968B - E6, E9 & E12 Gravity
 E6, E9 & E12 Treatment Plant (Gravity)

All dimensions in mm

Scale: Not to scale

Clearwater reserve the right to alter the details of this drawing without prior notice. This drawing is copyright and may not be reproduced or used without the written permission of Clearwater.