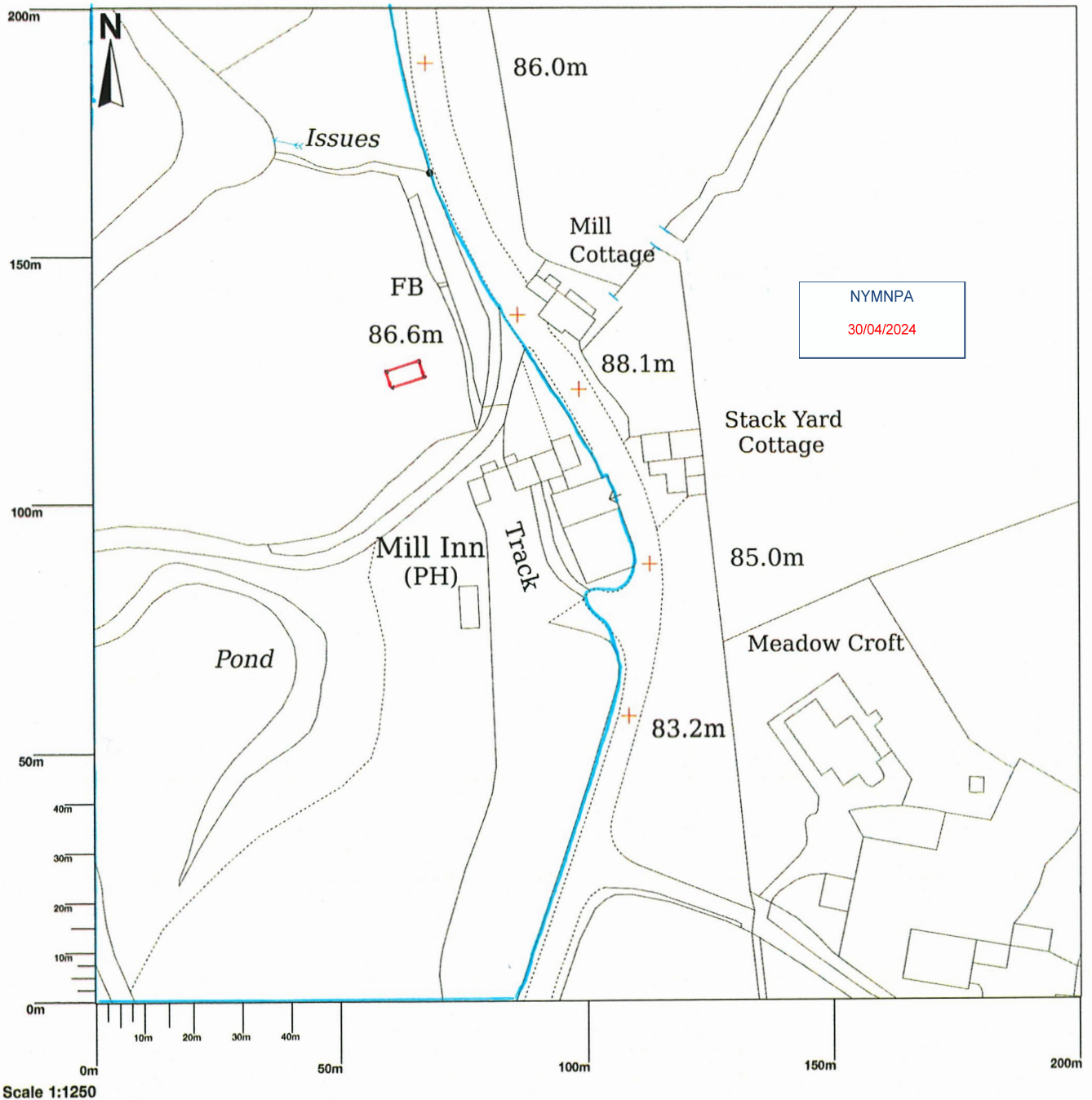
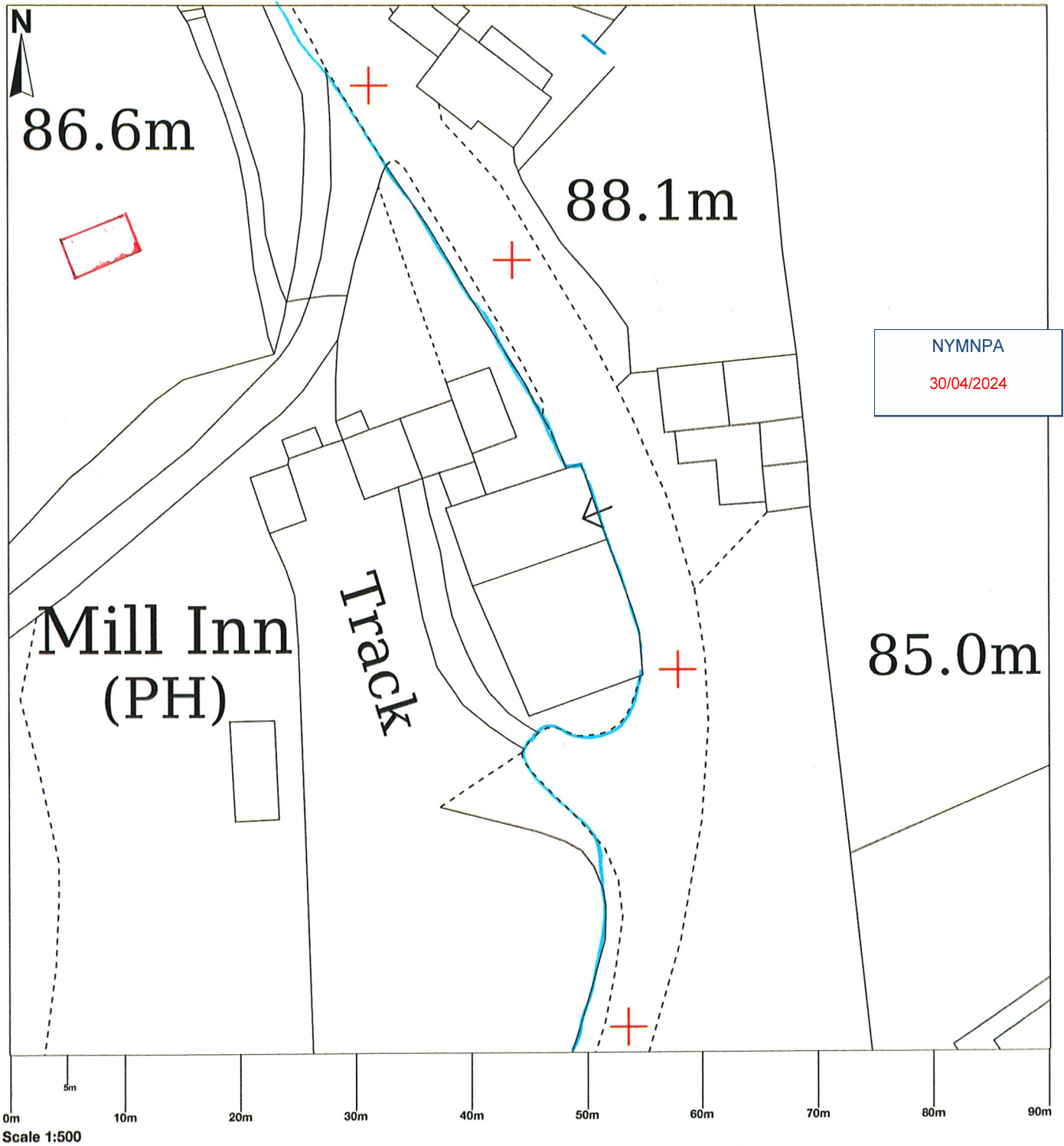


Mill Inn, Harwood Dale, Scarborough, YO13 0LA

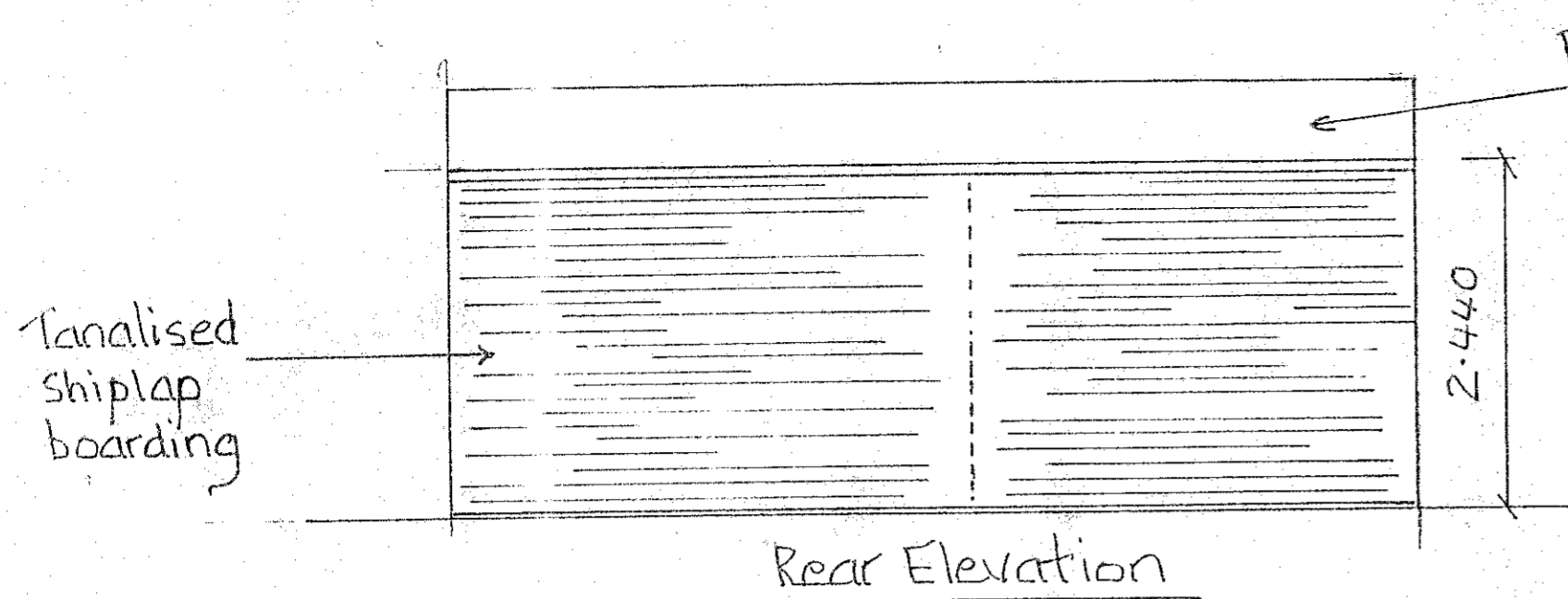


© Crown copyright and database rights 2024 OS 100054135. Map area bounded by: 495223,495893 495423,496093. Produced on 04 April 2024 from the OS National Geographic Database. Supplied by UKPlanningMaps.com. Unique plan reference: p4e/1077393/1456746

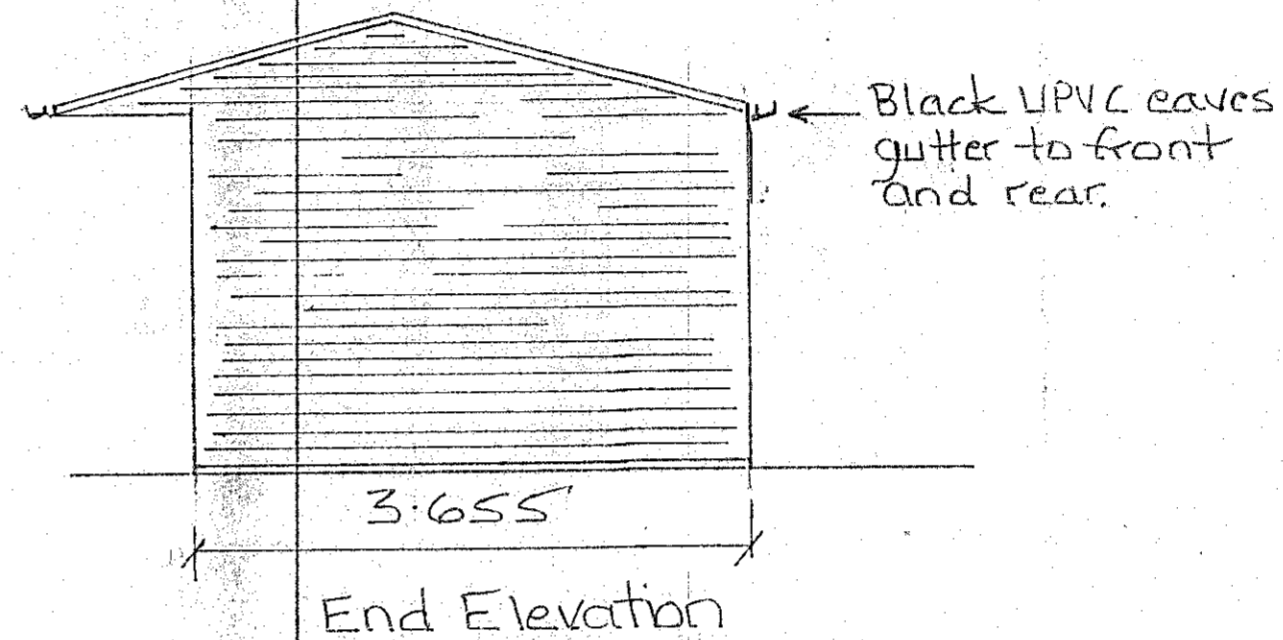
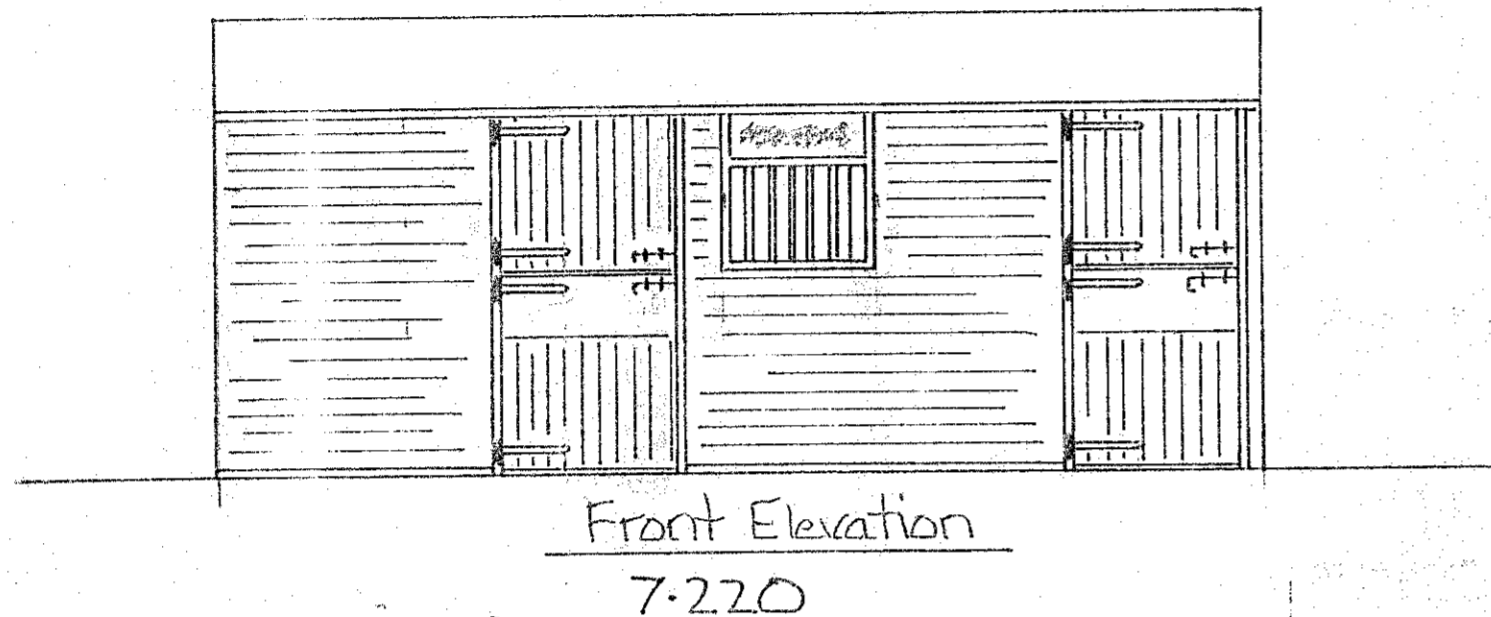
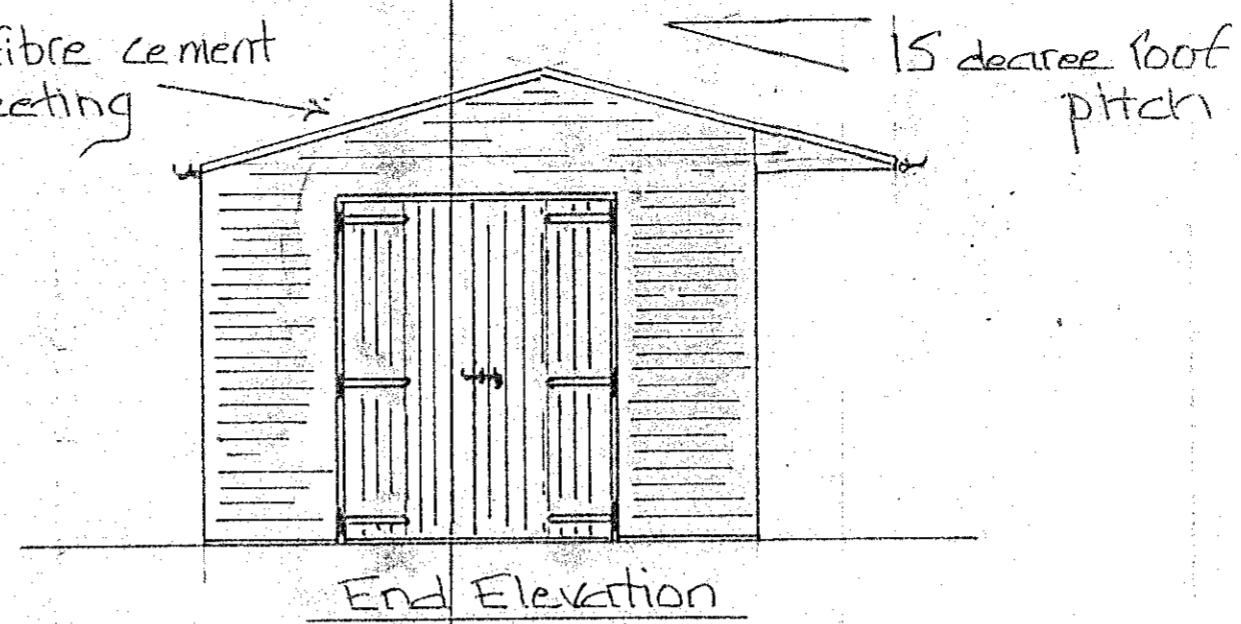
Mill Inn, Harwood Dale, Scarborough, YO13 0LA



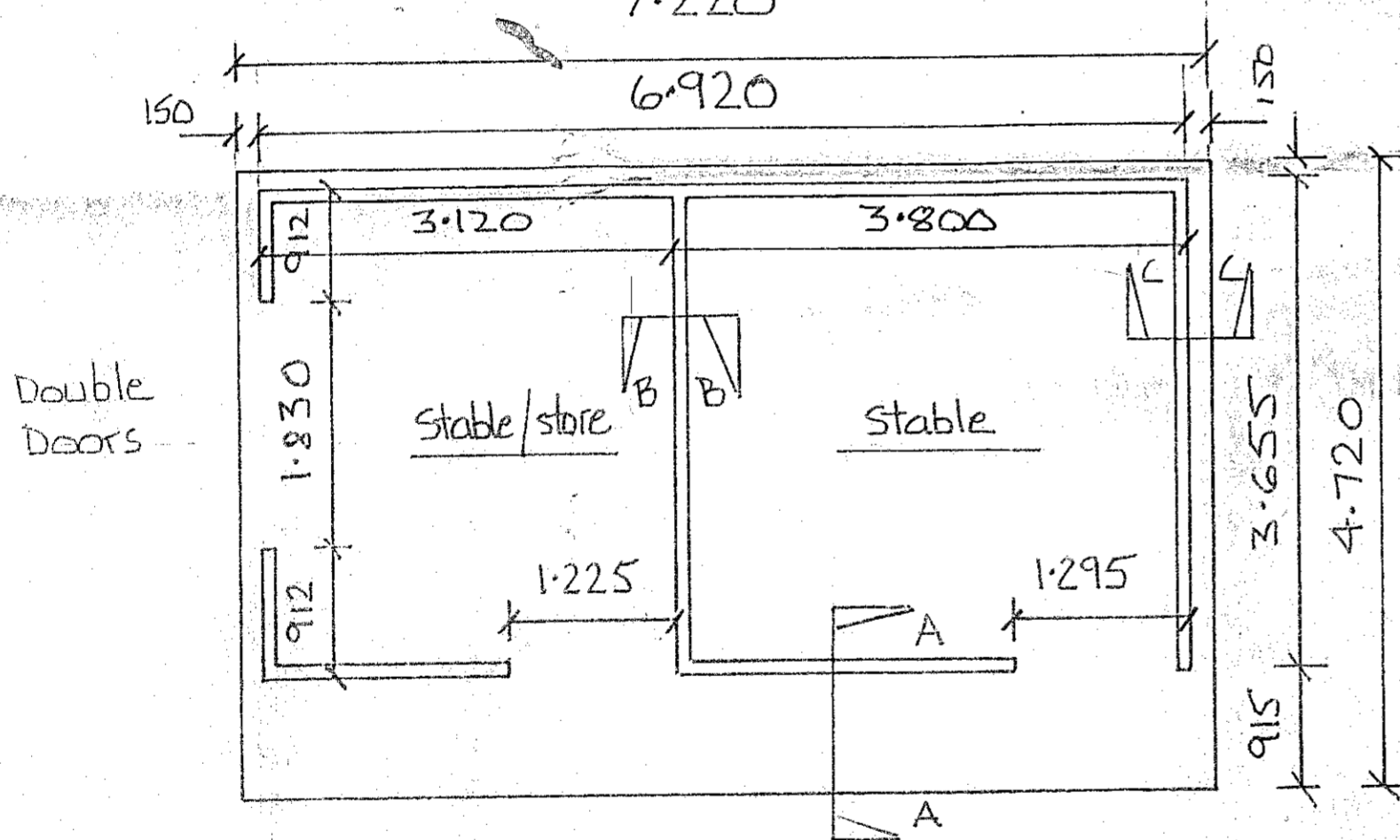
© Crown copyright and database rights 2024 OS 100054135. Map area bounded by: 495278,495948 495368,496038. Produced on 04 April 2024 from the OS National Geographic Database. Supplied by UKPlanningMaps.com. Unique plan reference: b90e//1082037/1456758



Profile 6-fibre cement roof sheeting



0m 1cm=0.5m 2.5m
Scale 1:50



NYMNPA
30/04/2024

Brick plinth must be laid square and level.
Dimensions must not exceed those on drawing.
Dimensions should be checked on site and not scaled from drawing.

New Livery Range sectional timber stables.

Drawing Title	
Floor plan with base details and brick plinth dimensions, with elevations added.	
Scale	1:50 1:10
Date	16/5/18
Drawn	Checked

