

- HOME
- ABOUT
- CONTACT US
- WORK FOR US!



THE RED GRANDIS HARDWOOD IN THE CONSTRUCTION OF THE OLD FOYLE FLUSH CASEMENT WINDOWS IS ENGINEERED HARDWOOD.

Search this website ..

- HARDWOOD ▾
- TROPICAL DECKING ▾
- PLYWOOD ▾
- MILLWORK
- NEWS
- CONNECTICUT YARD

Species Spotlight: Red Grandis

SEPTEMBER 21, 2012 BY SHANNON ROGERS — 2 COMMENTS

In our constant search for new products that can replace or at least act as alternatives to currently popular species that have become unpredictable to source, expensive to obtain, or inconsistent in quality, we came across Red Grandis (*Eucalyptus grandis*). This discovery was more than a year ago now. In the months since we have been evaluating the product on all of the above factors to see if it would be a fit for our customers. The **verdict is still on Red Grandis** but I thought it was worthwhile to share our experience so far.



What is Red Grandis?



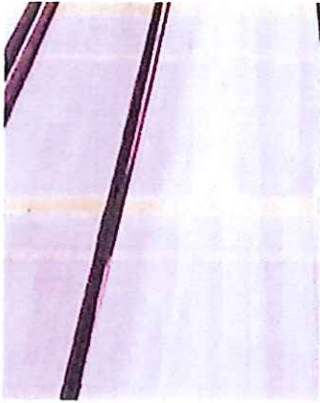
Red Grandis is a plantation species grown in Uruguay in an FSC certified forest using FSC certified harvesty practices. The **Cofusa** and **Ururfor** companies have been refining the species for more than 20 years. The result is a mature forest of over 66,000 acres in inland



Uruguay that boasts a multi generational forest that produces defect free, large diameter logs with a 20 year growing cycle. The efforts in the nursery to produce a hearty and productive tree have been well worth it and modern vegetative reproductive technology ensures effective clones of this superior species each generation. Effective forestry and silvicultural practices



take over from there to create highly a consistent and healthy population.



The board on the left has tanned in the sun for 3 hours, the right was exposed 1 hour ago

The species bears a close resemblance to Genuine Mahogany in hardness, density, and grain structure and is a cross between Mahogany and Cherry in color when freshly sawn. As it oxidizes and is finished, the color deepens to a rich red much closer to centuries old Mahogany. The sapwood is very subtle and is sometimes not easy to pick out from the heartwood. It is a little paler in color but over time the oxidization makes the whole board much more uniform. Like Mahogany however, the sapwood is quite narrow and it is easy to obtain 100% heartwood boards. Red Grandis is a high quality hardwood that is well suited for millwork, mouldings,

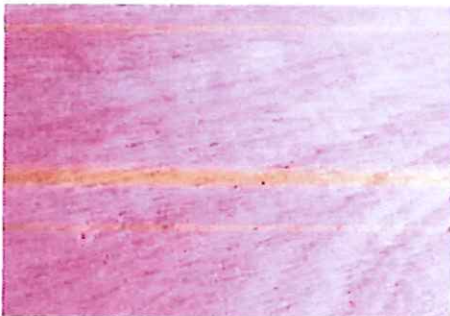


Like most plantation species, pin knots will be found but are not considered defects due to their stability.

furniture, cabinets, and even windows and doors as the heartwood is resistant to decay as long as it isn't in direct contact with the ground.



Why Red Grandis?



We are very happy with the species as a Mahogany, Spanish Cedar, or even a Cherry alternative because of the aesthetic similarities but also the physical workability, stability, and durability. It is a bit softer than Genuine Mahogany with a Janka rating of 720 psi and the density is almost exactly the same. In short it is easy to work and similar to an existing species on the market so easy to accept and convince customers it is a good choice. Most importantly though is the behind the scenes aspects. It is highly sustainable and FSC

rated so you can count on getting it when you need it with the same high quality each time and you can qualify for LEEDS points by using it. Mahogany is a CITES listed product so availability is dependent on so many factors, all of which serve to drive up the price as well as make sourcing it difficult. None of this applies to Red Grandis.