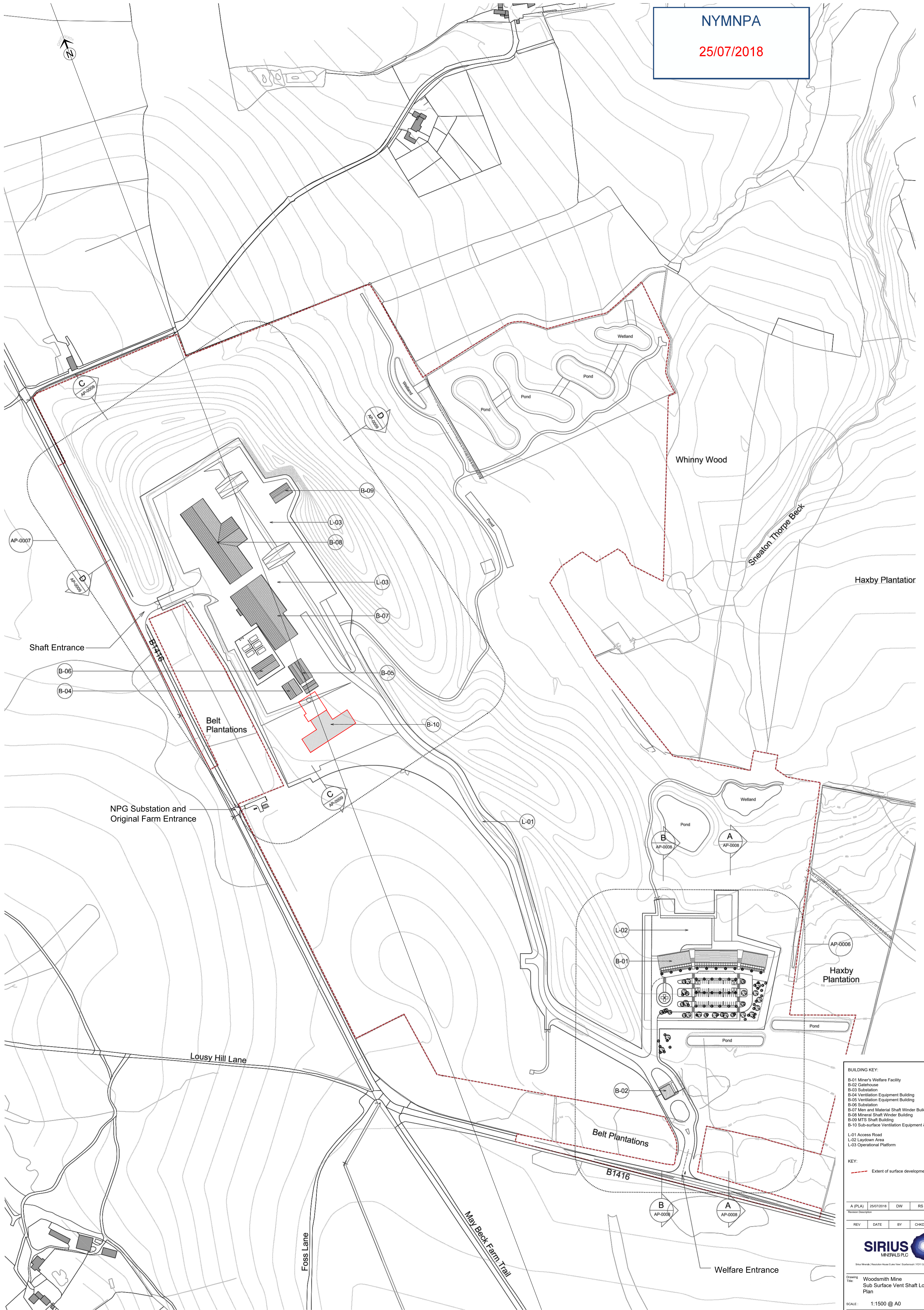


NYMNPA
25/07/2018



- BUILDING KEY:**
- B-01 Miner's Welfare Facility
 - B-02 Canteen
 - B-03 Substation
 - B-04 Ventilation Equipment Building
 - B-05 Ventilation Equipment Building
 - B-06 Substation
 - B-07 Men and Material Shaft Winder Building
 - B-08 Mineral Shaft Winder Building
 - B-09 MTS Shaft Building
 - B-10 Sub-surface Ventilation Equipment & Shaft
 - L-01 Access Road
 - L-02 Laydown Area
 - L-03 Operational Platform

KEY:

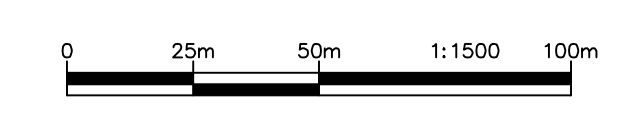
- - - Extent of surface development

A (PLA)	25/07/2018	DW	RS	JC
Revision Description				
REV	DATE	BY	CHKD	APPD



Drawing Title: **Woodsmith Mine Sub Surface Vent Shaft Location Plan**

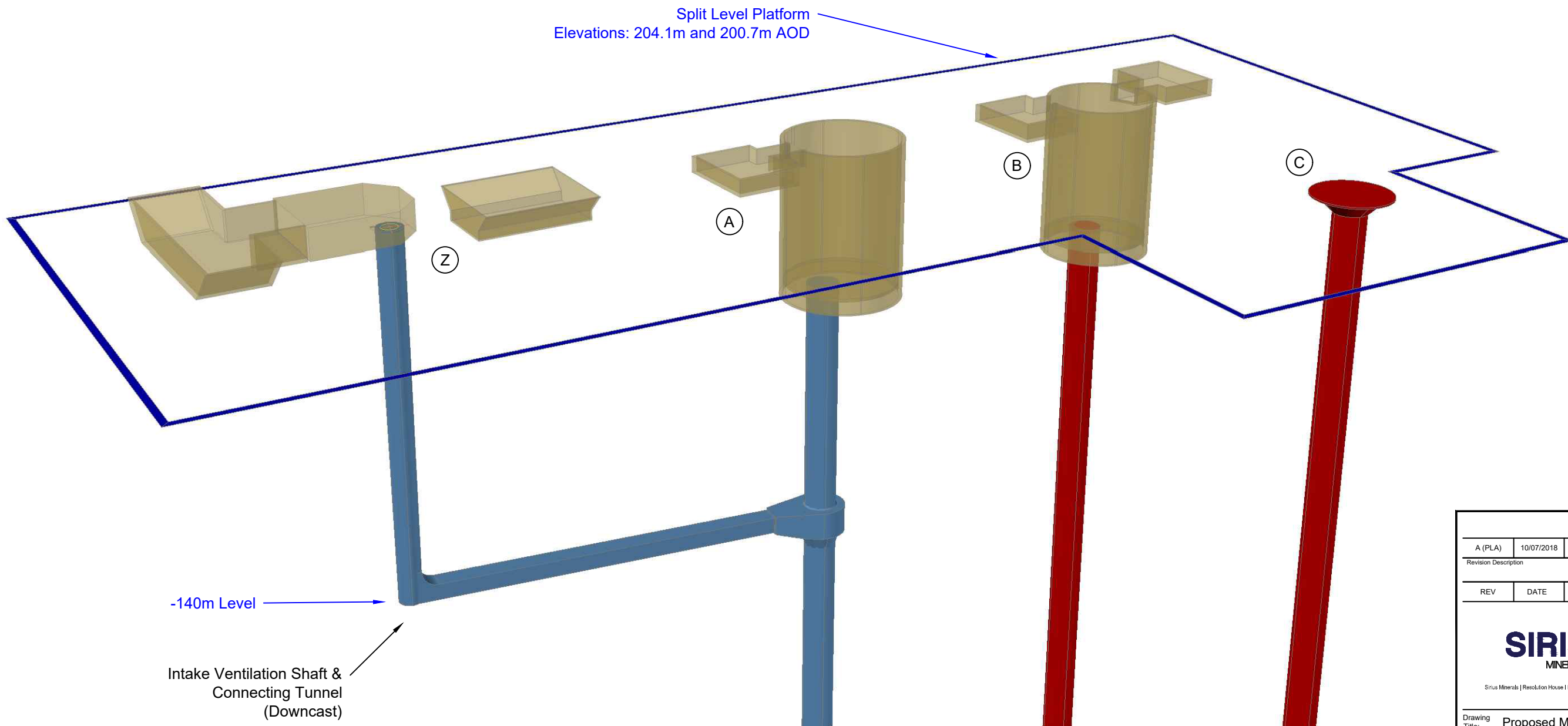
SCALE: 1:1500 @ A0
CONT No:



Feature Identification

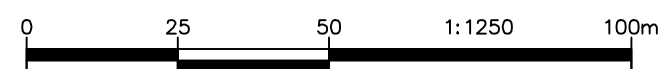
ID	Description
A	Men and materials shaft winder and headframe chamber
B	Minerals shaft winders and headframe chamber
C	TBM shaft evasee
Z	Fan, Bulk Air Cooler and Heat Rejection Unit Chambers

NYMNPA
17/07/2018



-140m Level
Intake Ventilation Shaft & Connecting Tunnel (Downcast)

Split Level Platform
Elevations: 204.1m and 200.7m AOD



A (PLA)	10/07/2018	DW	JC	WW
Revision Description				
REV	DATE	BY	CHKD	APPD

SIRIUS
MINERALS PLC

Sirius Minerals | Resolution House | Lake View | Scarborough | YO11 3ZB | North Yorkshire

Drawing Title: Proposed Mine and MTS Subsurface Structures / Vent Shaft

SCALE @ A3: 1:1250

CONT No:

DRG No: 40-SMP-WS-1400-PA-31-00001

REV **A**

DOCUMENT CERTIFICATION