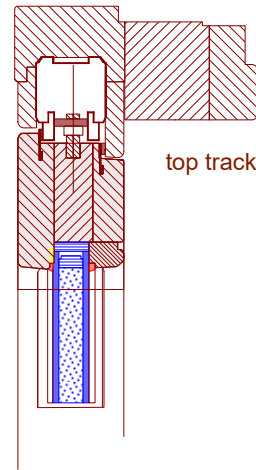


WINDOWS AND DOORS

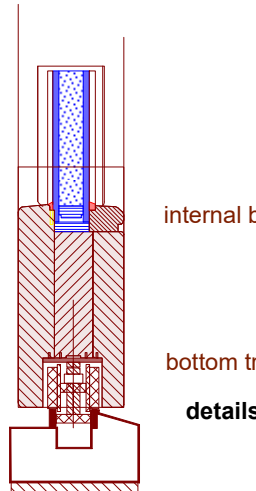
All windows and doors to be high performance weather rated purpose made timber designed to the approval of the local planning authority (note: habitable rooms opening light size to achieve minimum 1/20 of floor area for rapid ventilation part of which should be 1.75m above floor level)
 All doors to have trickle vents fitted giving background ventilation of not less than 8000mm sq to habitable rooms and 4000mm sq to all other areas

Glazing to doors which is wholly or partially within 1500mm from the floor level to be safety glazing to a minimum Class C and marked accordingly to BS 6206
 Glazing adjacent to doors which is wholly or partially within 300mm of the edge of a door & which is also wholly or partially within 1500mm from the floor level to be safety glazing to a minimum Class C and marked accordingly to BS 6206
 Low level glazing other than glazing in doors and glazing adjacent to doors which is wholly or partially within 800mm from the floor level to be safety glazing to a minimum Class C and marked accordingly to BS 6206
 Note: escape windows to be provided to suit unobstructed openable area that is at least 0.33m² and at least 450mm high and 450mm wide (the route thro' may be at an angle rather than straight thro') the bottom of the openable area should be not more than 1100mm above the floor

internal beads



top track



internal beads

bottom track

details of the bi-fold door and frame

doors and frames constructed from triple laminated solid timber sections with espagnolette multipoint locking systems

Timber
 to be treated laminated hardwood and sourced from sustainable sources only and in compliance with the terms required by the British Woodworking Federation BWF Timber Window Accreditation TWA scheme
 All timber to comply with the requirements of BS EN 942 2007.

Preservation
 components to be subjected to preservative treatment by double vacuum pressure impregnation The preservative to be used must meet UK Building Regulations

Glass
 proposed double glazed units to be a 4:16:4 (24mm) argon gas filled unit with softcoat Saint Gobain Low-E glass on the inside leaf, giving a U value of 1.2 W/m²K. The type of edge spacer used within the unit to be warmedge type.
 A toughened/laminated glass is used where necessary to comply with the Building Regulations;

Operation and Ironmongery
 7 lever lock and espagnolette multiple locking mechanism

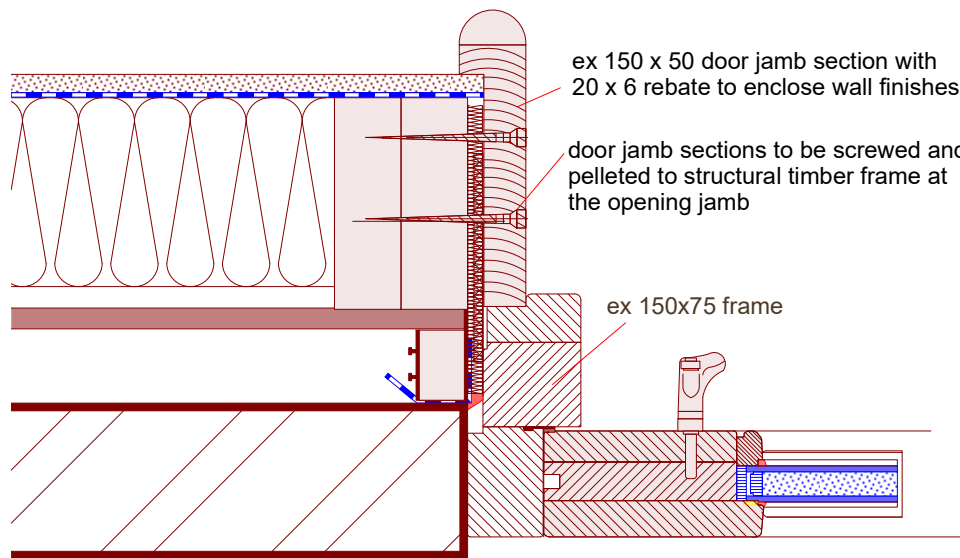
Ironmongery to be in brushed stainless steel finish

The windows are draught-sealed with gaskets.

WEATHERSHIELD AQUATECH WOODSTAIN - external
DULUX TRADE PROTECTIVE WOODSHEEN - internal
 Surfaces must be sound, clean and dry before treating. if necessary strip back to bare wood.
 Remove and treat any mould, algae, lichen or moss with *Weathershield Multi-Surface Fungicidal Wash.
 Clean the rebates and any loose or open joints.
 Thoroughly rub down all surfaces in the direction of the grain to remove any grey, weathered wood and surface sheen from remaining coatings, and then dust off (refer to your COSHH Assessment).
 Prime all bare wood with 1 coat of ** Weathershield Aquatech Preservative Basecoat+ (BP) including any new or bare replacement beading. Excess basecoat should be wiped off surrounding paintwork.

Mix the ** Weathershield Aquatech Preservative Basecoat+ (BP) thoroughly by shaking the container. Pour out a sufficient amount of primer for the job into a suitable metal container. Do not use direct from the can or return any unused basecoat to the container. Do not thin.
 Fill any surface defects, open joints etc. Do not use linseed oil putty for glazing (or making good) with natural wood finishes, The normal finishing process is 2 coats of Weathershield Aquatech Woodstain.
 When treating timber that has been pressure impregnated with preservative ensure that the surface is completely dry. The use of silicone sealants can cause "cissing" of this product. Do not use on resinous wood or woodwork with a history of blistering. The maximum benefits of this system will only be realised when used as directed above on good quality timber that conforms to BS942: 2007 (or as amended), in conjunction with good component design.

details of the hinged door and frame



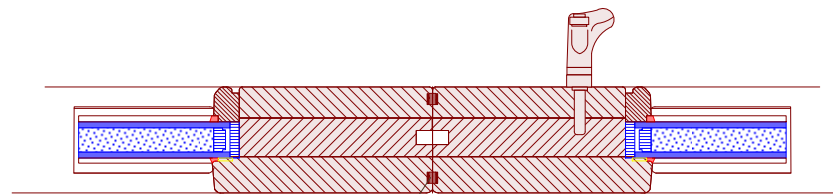
ex 150 x 50 door jamb section with 20 x 6 rebate to enclose wall finishes

door jamb sections to be screwed and pelleted to structural timber frame at the opening jamb

ex 150x75 frame

ex 175 x 50 door jamb section with 20 x 6 rebate to enclose wall finishes

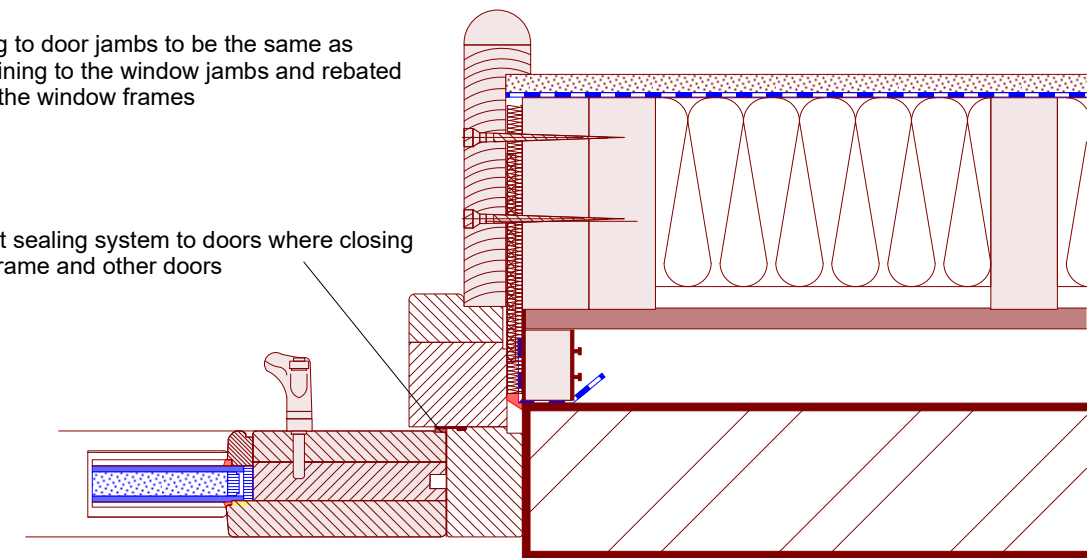
component sizes of doors
 height (mm) 2040
 stiles (mm) ex 125 x 75
 bottom rail (mm) 180 x 75
 lower middle rail (mm) ex112 x 75
 upper middle rail (mm) ex112 x 75
 top rail (mm) ex 125 x 75



gasket sealing system to doors where closing onto frame and other doors

lining to door jambs to be the same as the lining to the window jambs and rebated into the window frames

gasket sealing system to doors where closing onto frame and other doors



detail : external doors
 scale : 1 : 5 @ A3
 dwg. no : tcj2
 date : 08.12

NYMNP
 17/12/2018

John Blaymires 56 Pasture Lane
 Seamer
 Scarborough YO12 4QR
 Dipl. Arch (Leeds) RIBA
 CLIENT ox pasture hall hotel
 PROJECT 2016 proposed spa complex and suites

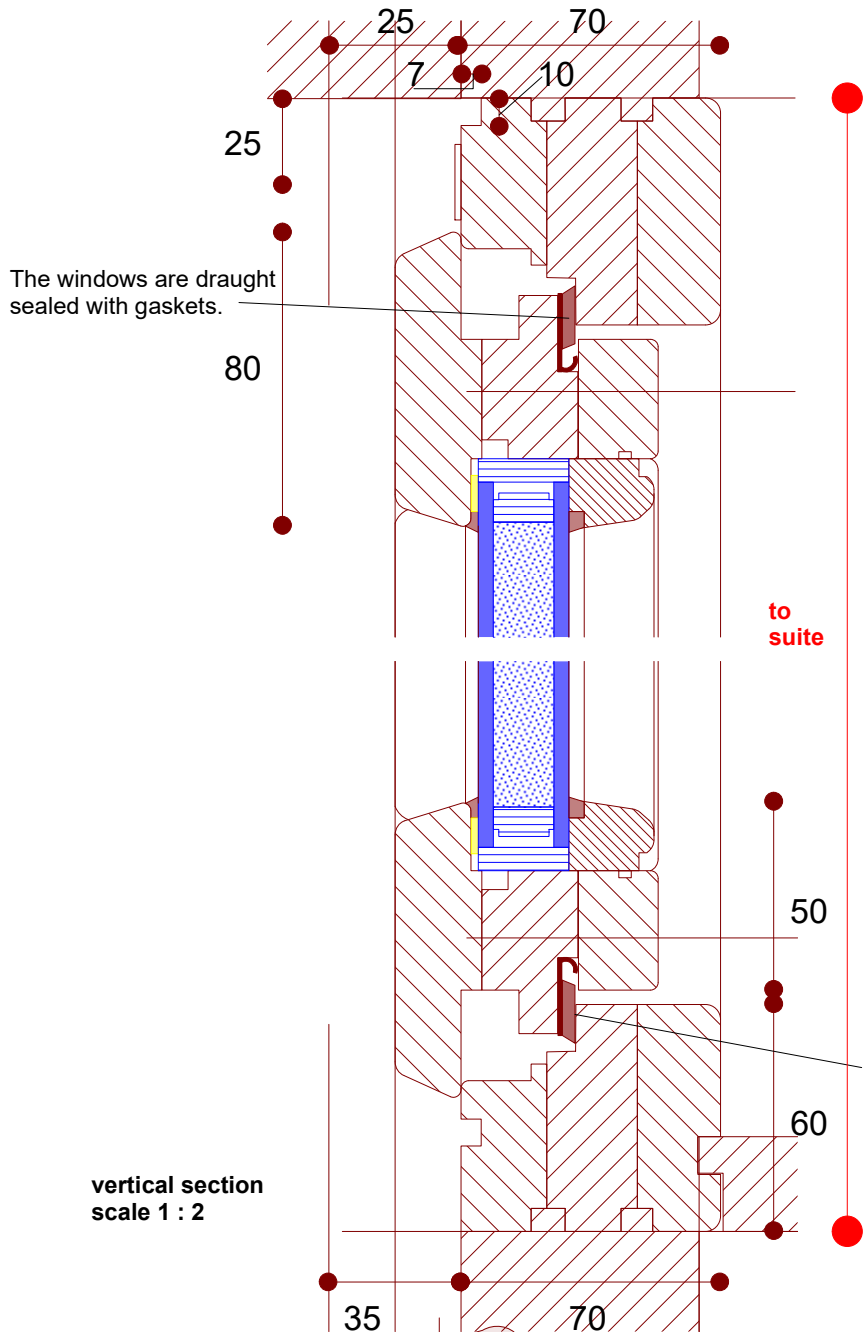
NYMNPA
17/12/2018



friction hinge - stainless steel

WEATHERSHIELD AQUATECH WOODSTAIN - external
DULUX TRADE PROTECTIVE WOODSHEEN - internal
Surfaces must be sound, clean and dry before treating.
if necessary strip back to bare wood.
Remove and treat any mould, algae, lichen or moss with
*Weathershield Multi-Surface Fungicidal Wash.
Clean the rebates and any loose or open joints.
Thoroughly rub down all surfaces in the direction of the grain
to remove any grey, weathered wood and surface sheen from
remaining coatings, and then dust off (refer to your COSHH
Assessment).
Prime all bare wood with 1 coat of ** Weathershield Aquatech
Preservative Basecoat+ (BP) including any new or bare
replacement beading. Excess basecoat should be wiped off
surrounding paintwork.

Mix the ** Weathershield Aquatech Preservative Basecoat+
(BP) thoroughly by shaking the container. Pour out a sufficient
amount of primer for the job into a suitable metal container. Do
not use direct from the can or return any unused basecoat to
the container. Do not thin.
Fill any surface defects, open joints etc. Do not use linseed oil
putty for glazing (or making good) with natural wood finishes,
The normal finishing process is 2 coats of Weathershield
Aquatech Woodstain.
When treating timber that has been pressure impregnated with
preservative ensure that the surface is completely dry.
The use of silicone sealants can cause "cissing" of this
product. Do not use on resinous wood or woodwork with a
history of blistering. The maximum benefits of this system will
only be realised when used as directed above on good quality
timber that conforms to BS942: 2007 (or as amended), in
conjunction with good component design.



vertical section
scale 1 : 2

Timber
to be treated laminated hardwood and sourced from
sustainable sources only and in compliance with the terms
required by the British Woodworking Federation BWF Timber
Window Accreditation TWA scheme
All timber to comply with the requirements of BS EN 942 2007.

Preservation
components to be subjected to preservative treatment by
double vacuum pressure impregnation The preservative to be
used must meet UK Building Regulations

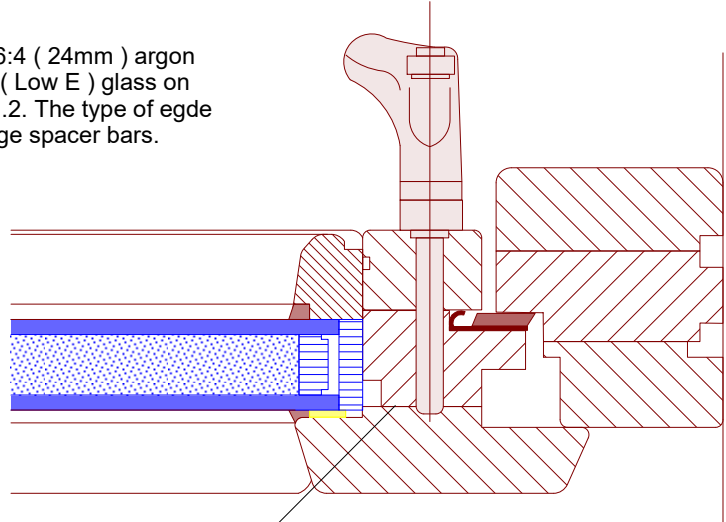
Glass
proposed double glazed units to be a 4:16:4 (24mm) argon
gas filled unit with softcoat Saint Gobain Low-E glass on the
inside leaf, giving a U value of 1.2 W/m2K. The type of edge
spacer used within the unit to be warmedge type.
A toughened/laminated glass is used where necessary to
comply with the Building Regulations;

Operation and Ironmongery
Side Hung operation - a casement stay and fastener
with a lockable handle for an increased security
Ironmongery to be brushed stainless steel finish

The windows are draught-sealed with gaskets.

The windows are draught-sealed with gaskets.

proposed double glazed units to be a 4:16:4 (24mm) argon
gas filled unit with softcoat low emissivity (Low E) glass on
the inside leaf, giving a glass U value of 1.2. The type of edge
spacer used within the unit to be warmedge spacer bars.



horizontal section
scale 1 : 2

The windows are draught
sealed with gaskets.

The windows are draught
sealed with gaskets.

The windows are draught
sealed with gaskets.

to suite

detail : casement window detail
scale : 1 : 2 @ A3

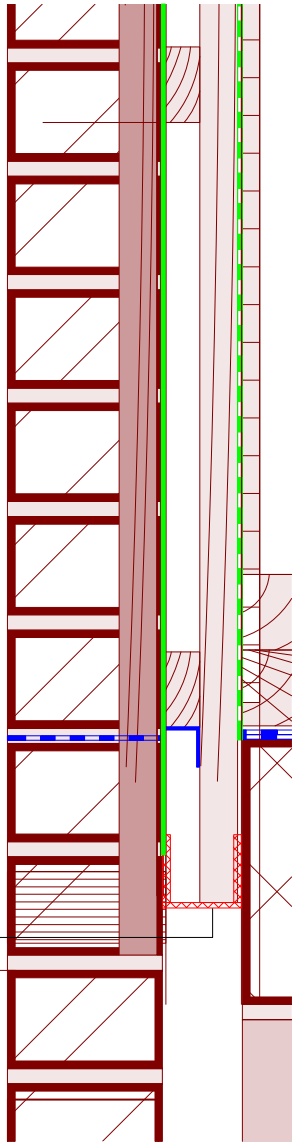
John Blaymires 56 Pasture Lane
Seamer
Dipl. Arch (Leeds) RIBA Scarborough YO12 4QR

CLIENT ox pasture hall hotel
PROJECT 2016 proposed spa complex and suites

NYMNP
17/12/2018

TREATMENT OF THE VERTICAL BOARDING
WEATHERSHIELD AQUATECH WOODSTAIN - external
 Surfaces must be sound, clean and dry before treating.
 if necessary strip back to bare wood.
 Remove and treat any mould, algae, lichen or moss with
 *Weathershield Multi-Surface Fungicidal Wash.
 Clean the rebates and any loose or open joints.
 Thoroughly rub down all surfaces in the direction of the grain to
 remove any grey, weathered wood and surface sheen from
 remaining coatings, and then dust off (refer to your COSHH
 Assessment).
 Prime all bare wood with 1 coat of ** Weathershield Aquatech
 Preservative Basecoat+ (BP) including any new or bare
 replacement beading. Excess basecoat should be wiped off
 surrounding paintwork.

Mix the ** Weathershield Aquatech Preservative Basecoat+ (BP)
 thoroughly by shaking the container. Pour out a sufficient
 amount of primer for the job into a suitable metal container. Do not use
 direct from the can or return any unused basecoat to
 the container. Do not thin.
 Fill any surface defects, open joints etc. Do not use linseed oil putty for
 glazing (or making good) with natural wood finishes.
 The normal finishing process is 2 coats of Weathershield Aquatech
 Woodstain.
 When treating timber that has been pressure impregnated with
 preservative ensure that the surface is completely dry.
 The use of silicone sealants can cause "cissing" of this product. Do not
 use on resinous wood or woodwork with a history of blistering. The
 maximum benefits of this system will only be realised when used as
 directed above on good quality timber that conforms to BS942: 2007
 (or as amended), in conjunction with good component design.



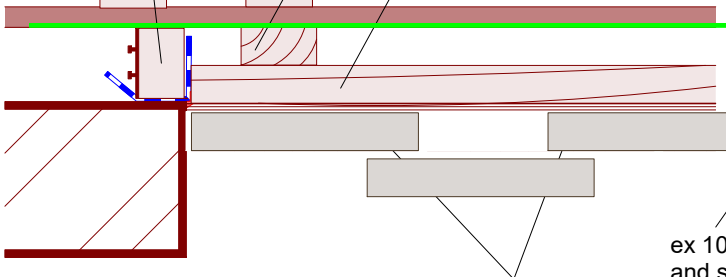
insect and rodent mesh
at base of the boarding

base of boarding

John Blaymires	56 Pasture Lane
	Seamer
Dipl. Arch (Leeds) RIBA	Scarborough YO12 4QR
CLIENT ox pasture hall hotel	
PROJECT 2016 proposed spa complex and suites	

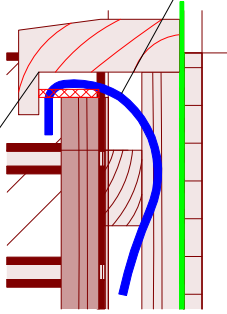
plan of boarding
thermabate cavity barrier

50x25 treated counter-battens at same centres as studs
50x25 treated battens at same centres as studs



150x25 sawn softwood vertical boarding with 6 gap between to be double nailed to each batten with stainless steel ring shanked nails on 6 thick wbp plywood base all treated as specified

top of boarding flow of air passage



ex 100x63 top cover section in treated timber and stained to match boarding with insect mesh to top and 10 wide continuous air gap. falls to top of cover section which may be to slope or horizontal dependant on position