

NYMNPA
23/01/2019

Tributary of Sneaton Thorpe Beck where additional temporary silt control measures are able to be installed.

Basal drainage layer to base of future mound.

Piped outfall to be kept for emergency use only.

Pond B Volume = 3700m³

Pond C Volume = 2500m³

Pond A Volume = 3700m³

Silt removal facility.

Temporary over land drainage pipe connecting the southern drainage network to the Northern drainage network.

Tributary of Sneaton Thorpe Beck where additional temporary silt control measures are able to be installed.

Permanent building drainage to temporarily connect to the existing surface water network / drainage ditches.

Wetland B

Pond D

Tributary of Sneaton Thorpe Beck where additional temporary silt control measures are able to be installed.

Piped outfalls to existing tributary of Sneaton Thorpe Beck.

Notes:

1. This drawing shows the proposed surface water drainage network for Site Preparation Phase 9.

Key:

- Land Ownership Boundary
- Proposed General Arrangement layout
- Surface water drainage attenuation pond
- Wetland
- Existing watercourses / ditch
- Manhole and carrier pipe
- Swale
- Check dam
- Silt fence
- Ditch
- Ditch with impermeable liner
- Inlet / outlet headwall
- Filter drain
- Basal drainage
- Groundwater drainage
- Non domestic waste water discharge pipe

0	21/01/19	CG	JB	CW
For Planning				
B	18/01/19	KK	JB	CW
For comment				
A	17/01/19	KK	JB	CW
For comment				
Issue	Date	By	Chkd	Appd

ARUP

Admiral House, Rose Wharf,
78 East Street, Leeds, LS9 9EE

Client
Sirius Minerals Plc

Job Title
**Woodsmith Mine
Proposed Minehead**

Woodsmith Mine Site Construction Phase 9 Drainage General Arrangement

Scale at A1 1:2000

Discipline **Drainage**

Job No

253285

Drawing Status

Planning

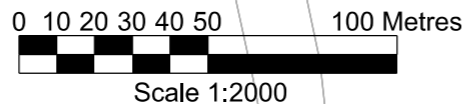
Drawing No

40-ARI-WS-7100-CI-18-01052

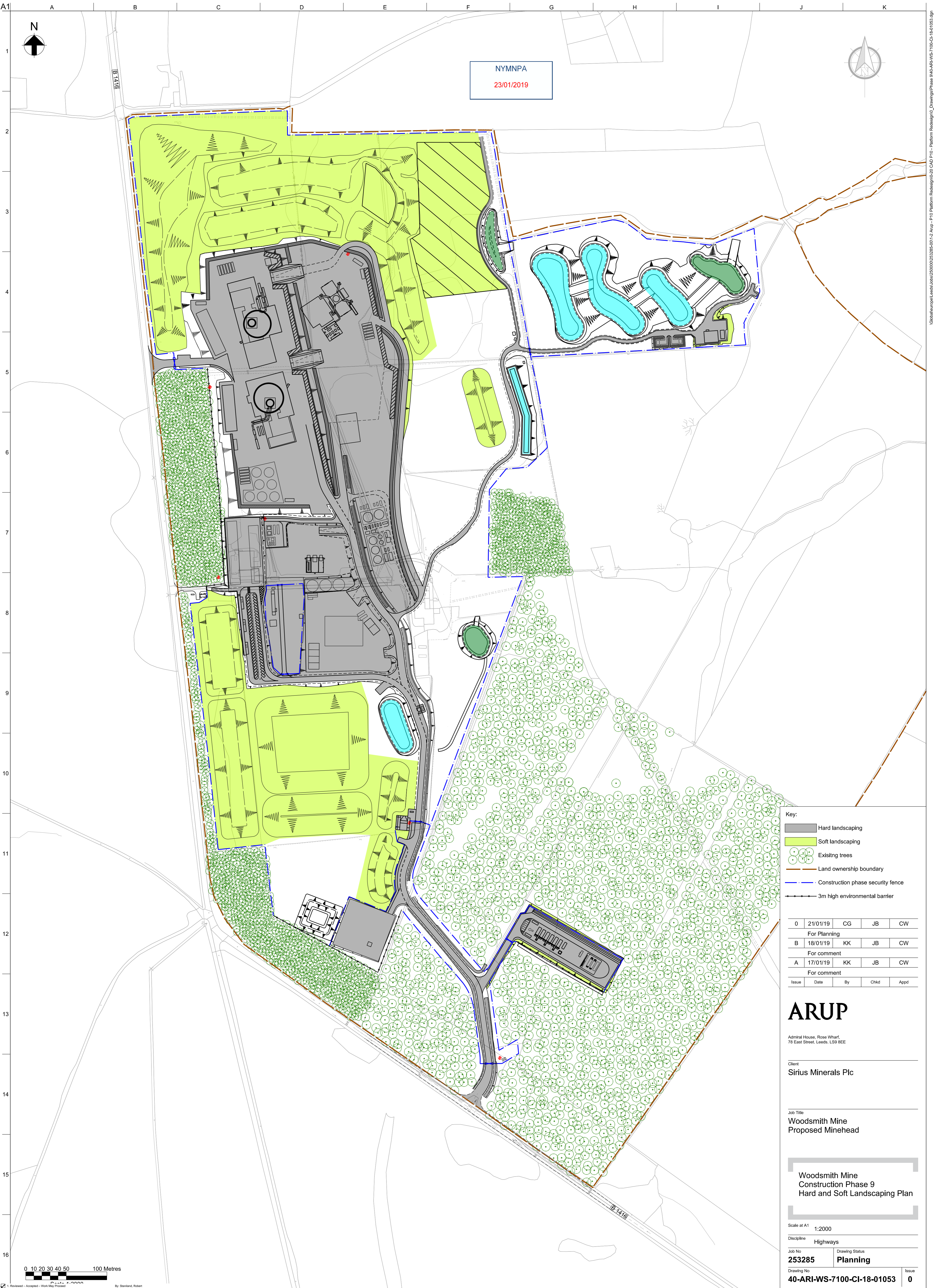
Issue

0

Inset Plan
By: Standard, Robert
On: 22 Jan 2019 11:54



I:\bbs\arup\leeds\253285\01-2-Arup - P10 Platform Redesign\30 CAD P10 - Platform Redesign\0_Drawings\Phase 9\40-ARI-WS-7100-CI-18-01052.dgn



NYMNPA
23/01/2019

Key:

- Hard landscaping
- Soft landscaping
- Existing trees
- Land ownership boundary
- Construction phase security fence
- 3m high environmental barrier

0	21/01/19	CG	JB	CW
For Planning				
B	18/01/19	KK	JB	CW
For comment				
A	17/01/19	KK	JB	CW
For comment				
Issue	Date	By	Chkd	Appd

ARUP
Admiral House, Rose Wharf,
78 East Street, Leeds, LS9 8EE

Client
Sirius Minerals Plc

Job Title
**Woodsmith Mine
Proposed Minehead**

**Woodsmith Mine
Construction Phase 9
Hard and Soft Landscaping Plan**

Scale at A1 1:2000

Discipline **Highways**

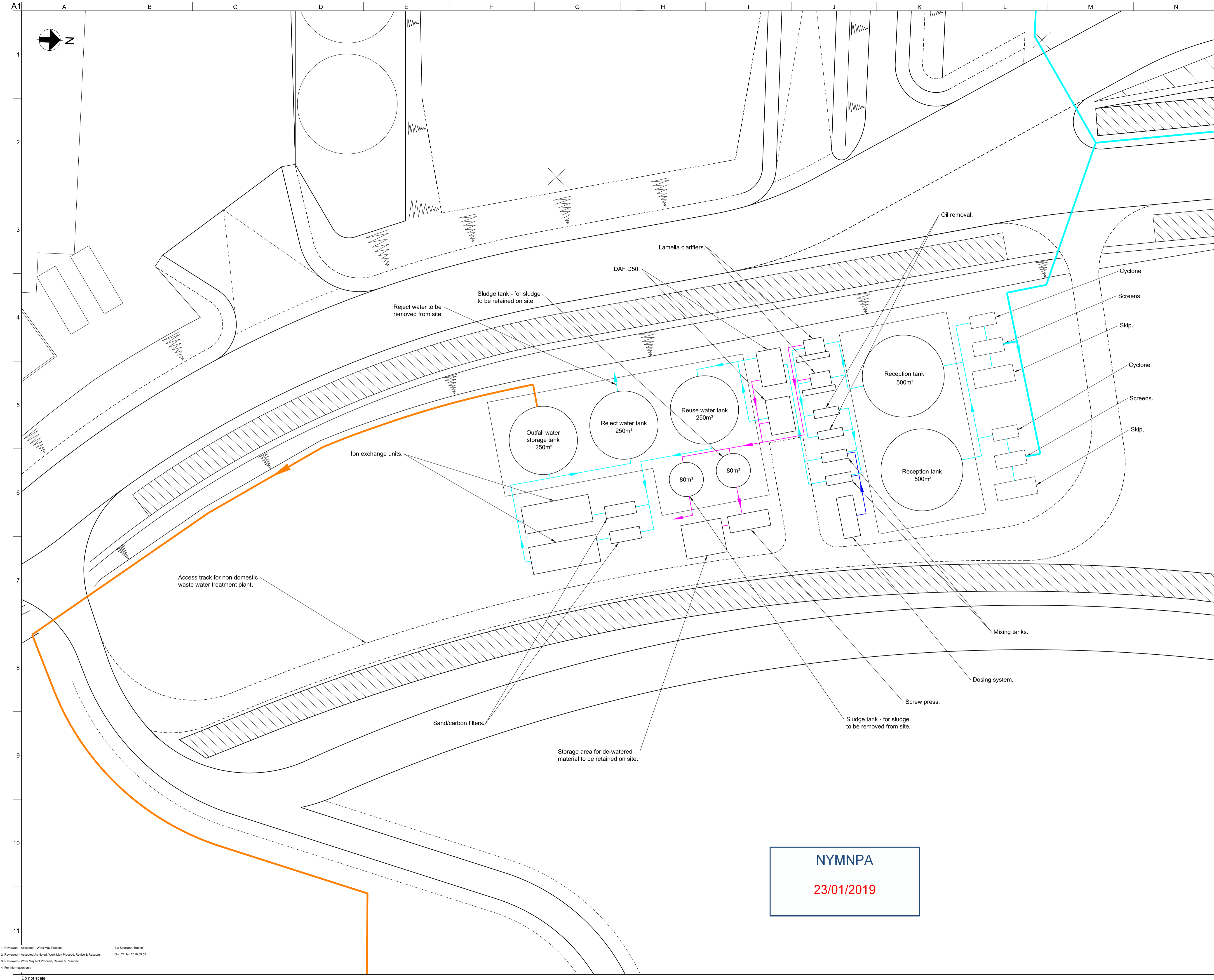
Job No 253285	Drawing Status Planning
Drawing No 40-ARI-WS-7100-CI-18-01053	Issue 0

0 10 20 30 40 50 100 Metres

By: Standard, Robert
On: 22 Jan 2019 11:54

1. Reviewed - Accepted - Work May Proceed
2. Reviewed - Accepted As Noted, Work May Proceed, Revise & Resubmit
3. Reviewed - Work May Not Proceed, Revise & Resubmit
4. For information only

I:\bbs\arup\leeds\253285\01-2-Arup - P10 Platform Redesign\18-01053-01-2-Arup - P10 Platform Redesign\Phase 9-40-ARI-WS-7100-CI-18-01053.dgn



- Notes:
- For outfall location refer to drawing 40-ARI-WS-7100-CI-18-01050
- Key :
- Principal non domestic waste water pumped connection
 - Non domestic waste water treatment plant outfall (gravity connection)
 - Principal sludge system
 - Chemical dosing system pipe
 - Surface water drainage ditch
 - Proposed general arrangement

0	18/01/19	CG	JB	CW
For issue				
A	16/01/19	CG	JB	CW
For comment				
Issue	Date	By	Chkd	Appd

ARUP
 Admiral House, Rose Wharf,
 76 East Street, Leeds, LS9 8EE

Client
Sirius Minerals Plc

Job Title
**Woodsmith Mine
 Proposed Minehead**

Woodsmith Mine
 Construction Phase 9
 Non Domestic Waste Water
 Treatment Plant

Scale at A1 1:250

Discipline General

Job No 253285	Drawing Status Planning
Drawing No 40-ARI-WS-7100-CI-22-01054	Issue 0

NYMNPA

23/01/2019

By: Stanland, Robert
 On: 21 Jan 2019 09:55

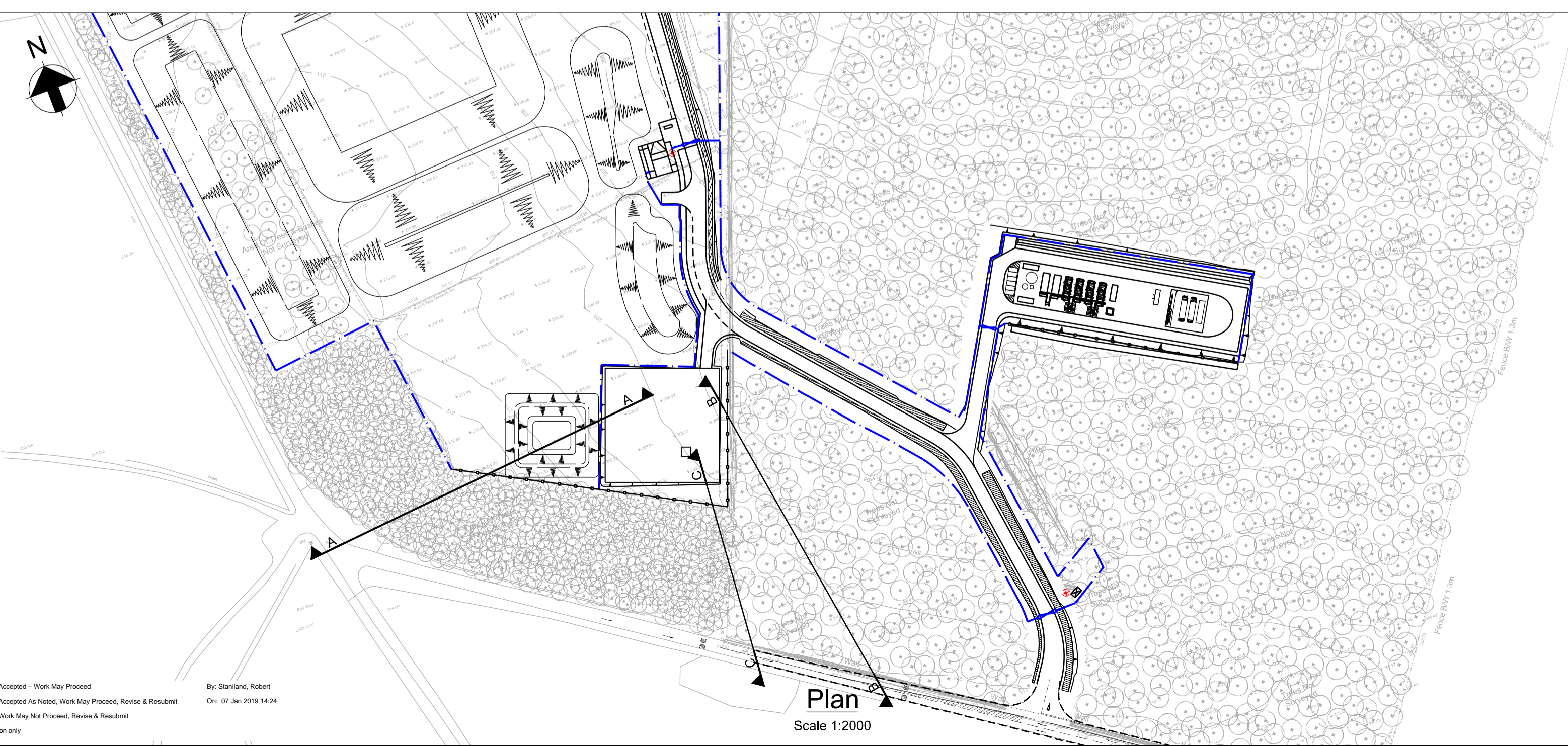
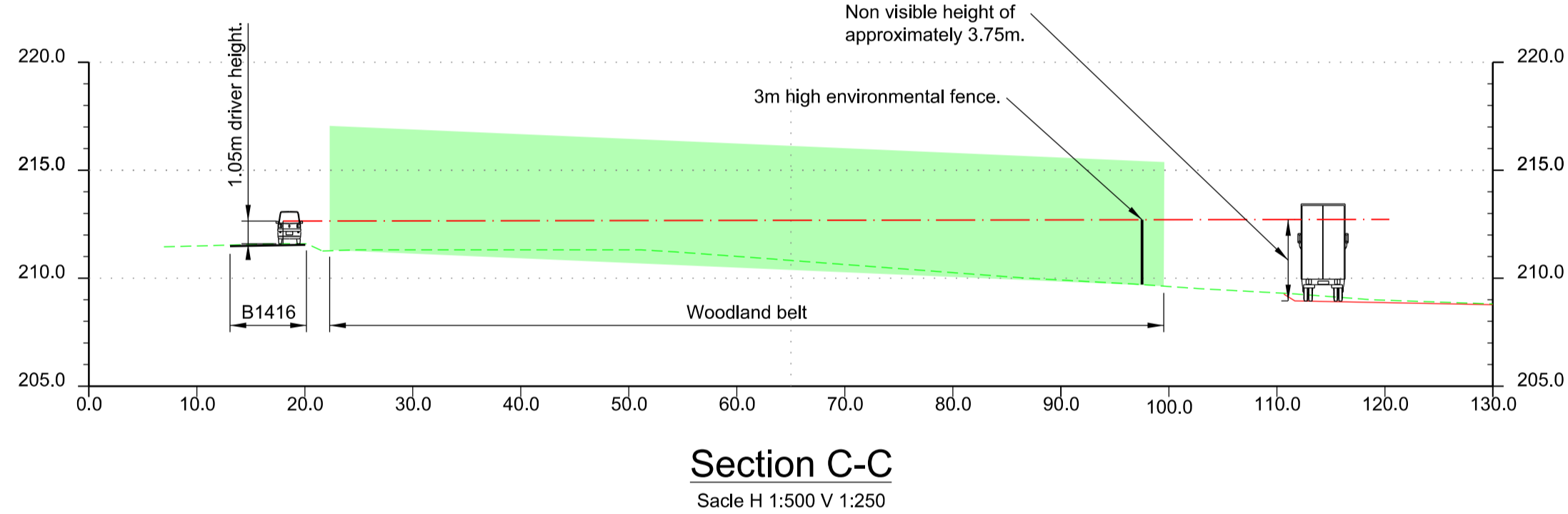
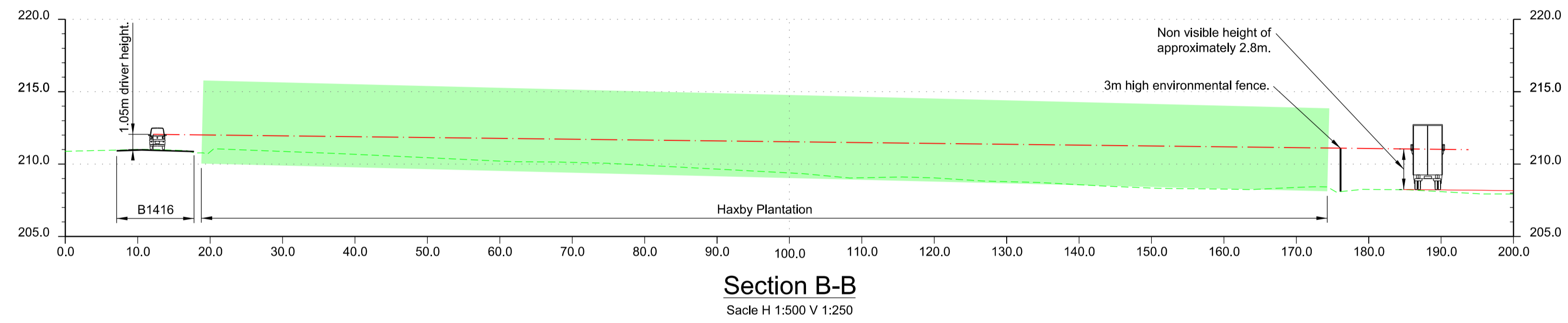
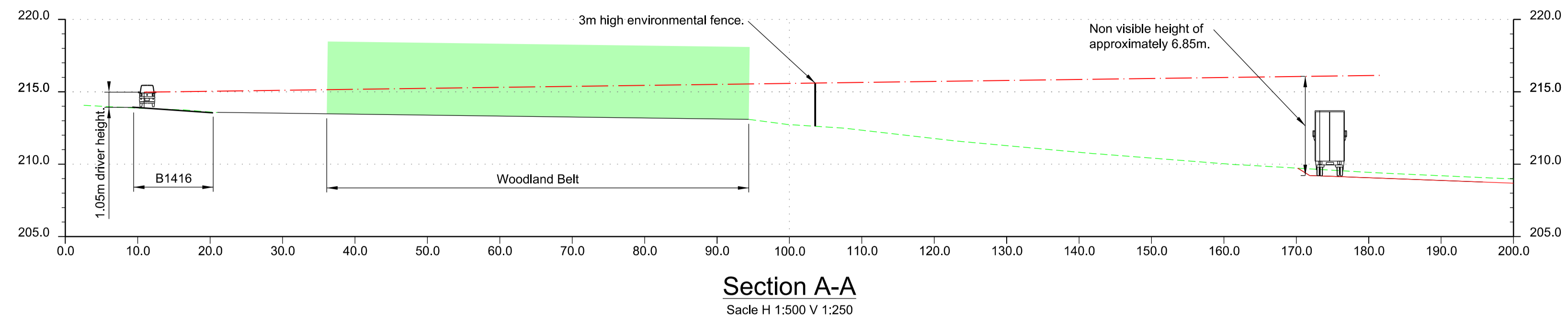
1. Reviewed - Accepted - Work May Proceed
 2. Reviewed - Accepted As Noted, Work May Proceed, Revise & Resubmit
 3. Reviewed - Work May Not Proceed, Revise & Resubmit
 4. For information only

Do not scale

I:\G:\arup\leeds\user25000\253285\2019\2 - Arup - P10 Platform Redesign\Drawings\40-ARI-WS-7100-CI-22-01000 Waste water management strategy.dgn
 © Arup

A1
1
2
3
4
5
6
7
8
9
10
11

A B C D E F G H I J K L M N



NYMNP
23/01/2019

- Notes :
- All levels are in metres above Ordnance Datum. Levels shown are approximate.
- Key :
- Existing ground profile
 - Proposed platform profile
 - Line of sight
 - Woodland area
 - 3m high environmental wooden fence
 - 2.4m high construction black weld mesh fence

0	02/01/19	CG	CW	CW
Issue				
A	18/12/18	CG	JB	CW
Draft				
Issue	Date	By	Chkd	Appd

ARUP
Admiral House, Rose Wharf,
75 East Street, Leeds, LS9 8EE

Client
Sirius Minerals Plc

Job Title
**Woodsmith Mine
Proposed Minehead**

**Woodsmith Mine
Temporary platform visibility**

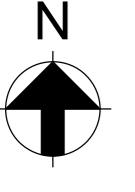
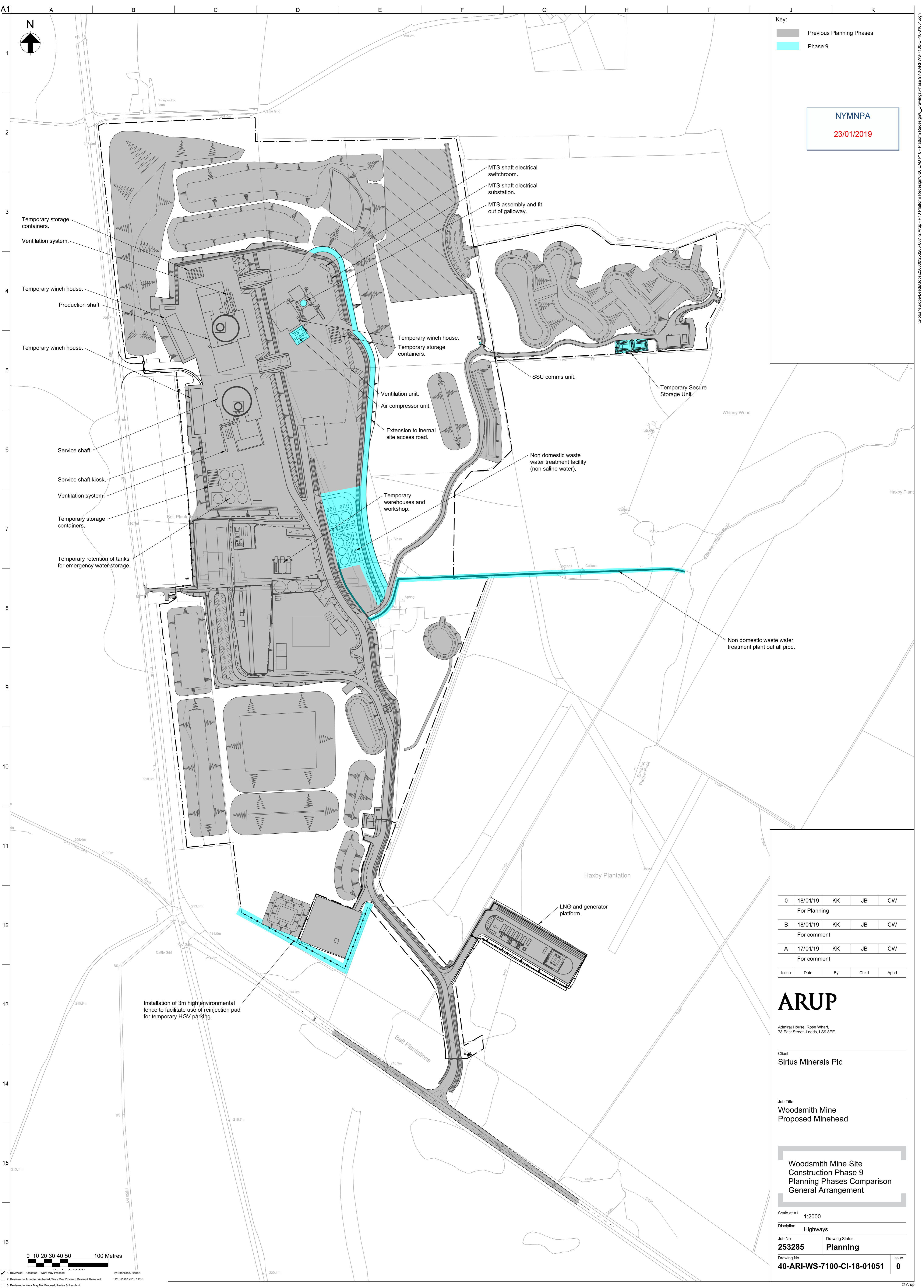
Scale at A1 As shown
Discipline General
Job No **253285** Drawing Status **Issue**
Drawing No **40-ARI-WS-7240-CI-41-01000** Issue **0**

1. Reviewed - Accepted - Work May Proceed
2. Reviewed - Accepted As Noted, Work May Proceed, Revise & Resubmit
3. Reviewed - Work May Not Proceed, Revise & Resubmit
4. For information only

By: Stanland, Robert
On: 07 Jan 2019 14:24

Do not scale

I:\Global\Projects\Leeds\Jobs\253285-01\2 Anup - P10 Platform - Redesign\02 CAD P10 - Platform - Redesign\40-ARI-WS-7240-CI-41-01000 HVG Parking sections.dgn



Key:
 Previous Planning Phases
 Phase 9

NYMNP
 23/01/2019

Temporary storage containers.
 Ventilation system.
 Temporary winch house.
 Production shaft.
 Temporary winch house.
 Service shaft.
 Service shaft kiosk.
 Ventilation system.
 Temporary storage containers.
 Temporary retention of tanks for emergency water storage.

MTS shaft electrical switchroom.
 MTS shaft electrical substation.
 MTS assembly and fit out of galloway.

Temporary winch house.
 Temporary storage containers.
 Ventilation unit.
 Air compressor unit.
 Extension to internal site access road.

SSU comms unit.
 Temporary Secure Storage Unit.

Non domestic waste water treatment facility (non saline water).

Temporary warehouses and workshop.

Non domestic waste water treatment plant outfall pipe.

LNG and generator platform.

Installation of 3m high environmental fence to facilitate use of reinjection pad for temporary HGV parking.

0	18/01/19	KK	JB	CW
For Planning				
B	18/01/19	KK	JB	CW
For comment				
A	17/01/19	KK	JB	CW
For comment				
Issue	Date	By	Chkd	Appd

ARUP

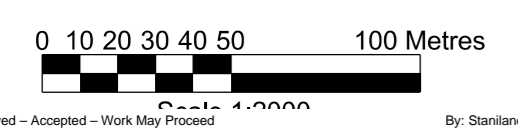
Admiral House, Rose Wharf,
 78 East Street, Leeds, LS9 8EE

Client
Sirius Minerals Plc

Job Title
**Woodsmith Mine
 Proposed Minehead**

**Woodsmith Mine Site
 Construction Phase 9
 Planning Phases Comparison
 General Arrangement**

Scale at A1 1:2000
 Discipline Highways
 Job No 253285 Drawing Status Planning
 Drawing No 40-ARI-WS-7100-CI-18-01051 Issue 0



1. Reviewed - Accepted - Work May Proceed
 2. Reviewed - Accepted As Noted, Work May Proceed, Revise & Resubmit
 3. Reviewed - Work May Not Proceed, Revise & Resubmit
 4. For information only

By: Steward, Robert
 On: 22 Jan 2019 11:52

I:\bb\arup\leeds\2000\2023285\01-12-Aug - P10 Platform Redesign\30 CAD P10 - Platform Redesign\0_Drawings\Phase 9\40-ARI-WS-7100-CI-18-01051.dgn