

**Design , Access & Heritage Statement –
Victory Mill, Thornton-le- Dale YO18 7RU
Planning Portal Reference – PP-05050664**

Overview

The application is for the erection of an external lift enclosure to provide accessibility to the upper Apartment of Victory Mill.

Use

The proposed use is in connection with existing domestic development.

Amount

The proposal is for a enclosure approximately 2.5m x 2.5m x 10.5m in size.

Layout

The proposed layout has been determined by 3 factors: -

1. Applicant's requirements for easier access to upper floor.
2. Form of the existing building.
3. Technical requirements of lift supplier (footprint and height above highest floor level)
4. Pre-application advice

Scale

The scale is proportional to the layout and only a single enclosure is proposed.

Landscaping

No change to landscaping is proposed.

Appearance

The general appearance of the enclosure will reflect a typical grain elevator, the Mill having being previously used (prior to conversion to offices) as flour and feed mill.

Access

The site will be served by the existing access from Priestman's Lane.

Heritage Statement

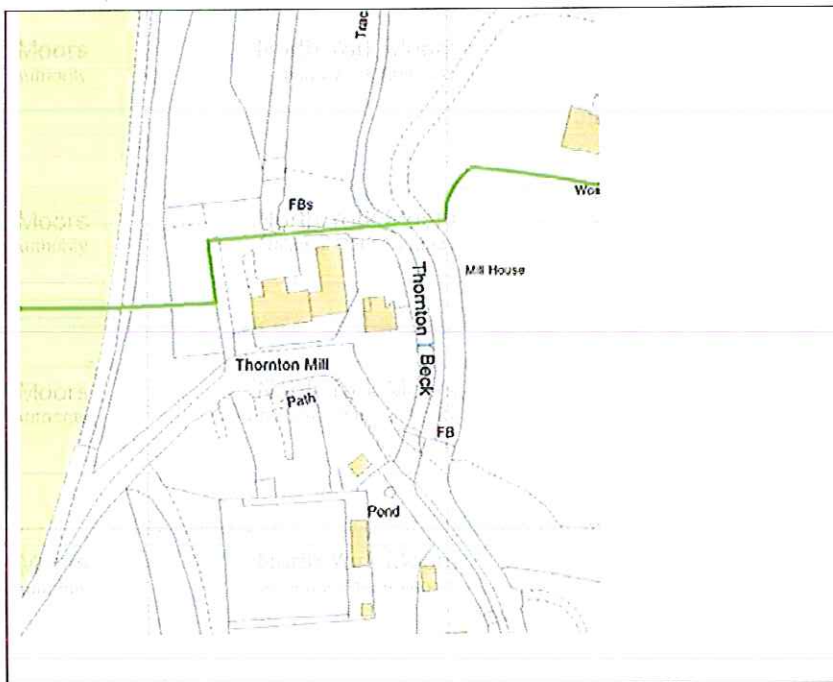
Because the development is within the Conservation Area, the Local Planning Authority have determined a Heritage Statement is required.

A Heritage Statement is expected to contain the following information

- Assessment of Historic Significance
- Assessment of Impact
- Mitigation Strategy

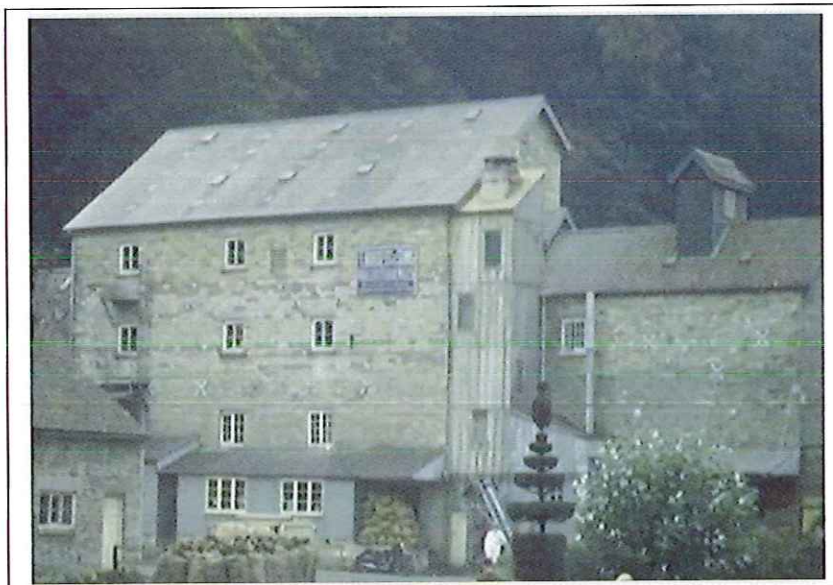
Assessment of Historic Significance.

The site is at the Northern perimeter of the Thornton-le-Dale Conservation Area.



The rear elevation of Victory Mill is visible only from Ellerburn Road and from the footpath that follows Thornton Beck. The thickly wooded area to the West of the site precludes views from the Whitbygate.

The Mill is not a Listed Building having undergone substantial alterations in the late 1990's to create offices from the mill that ceased production in 1963



The adjacent photograph shows the Mill in the 1950's and indicates the design cues for the lift enclosure, taken from elements that previously were part of the architecture of Victory Mill.



Another photograph showing the Mill at the Coronation celebrations.

Assessment of Impact

The proposals have very little impact upon the conservation area as the proposed lift enclosure will, by virtue of its location, not be visible from the large majority of the Conservation Area.

Mitigation Strategy

Because of the negligible impact on the Heritage Asset no mitigation is considered necessary.

Nicholas W Greenhalgh Dip Arch RIBA Chartered Architect
Cedar Studio Designs Limited
42 Town Street, Old Malton, Malton. YO17 7HD
14th. April 2016