

No changes to this elevation



South Elevation - 1:100

Planning



Amendments

DO NOT SCALE FROM THIS DRAWING. IF IN DOUBT PLEASE ASK ALL DIMENSIONS MUST BE CHECKED ON SITE WHERE POSSIBLE THIS DRAWING MUST NOT BE REPRODUCED IN WHOLE OR PART WITHOUT WRITTEN AUTHORITY

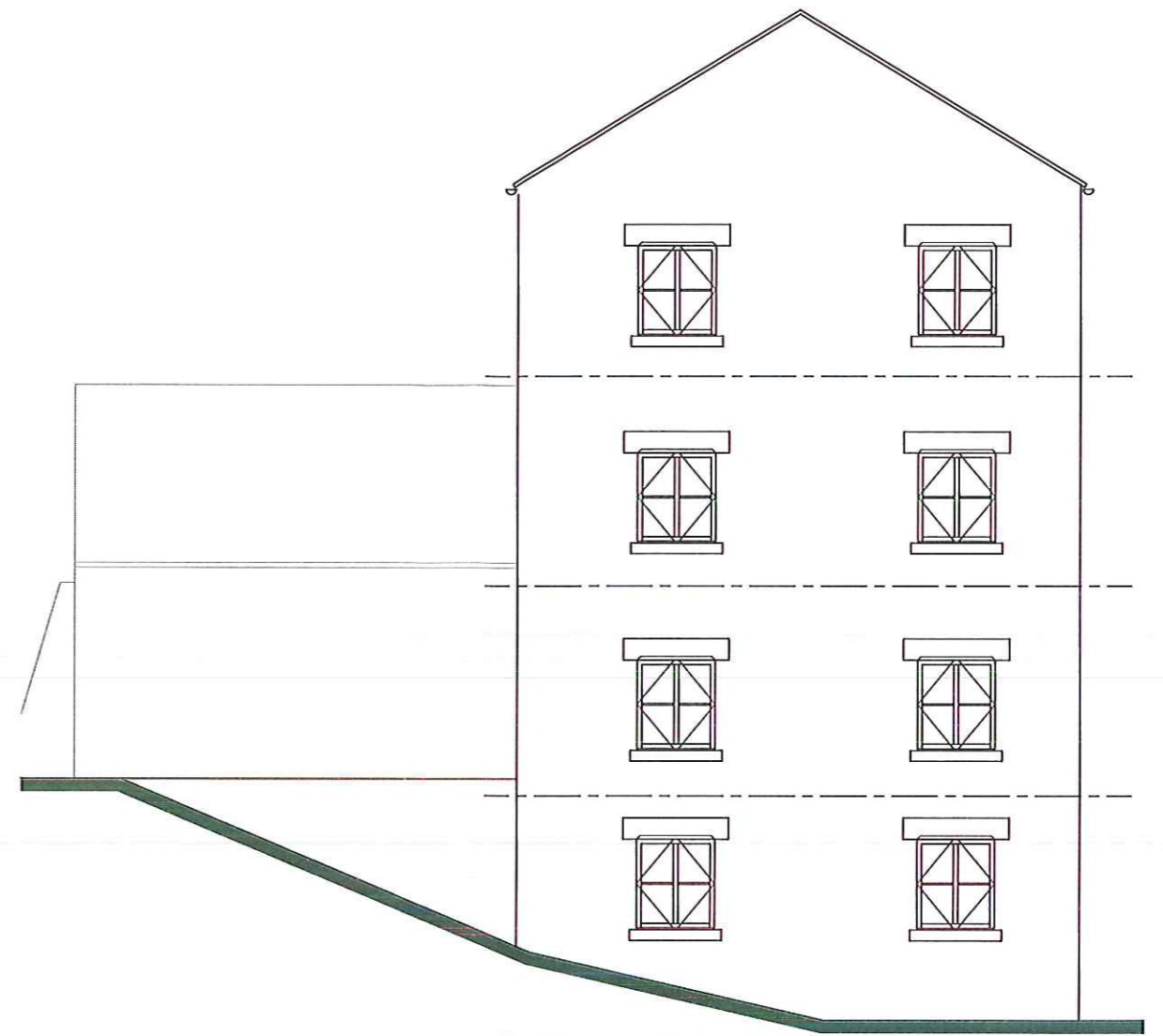
client Burgess Group plc
 project Victory Mill, Thornton Le Dale
 title Front Elevation (Existing)
 job ref 15/B25/08

scale 1:75

@ A3

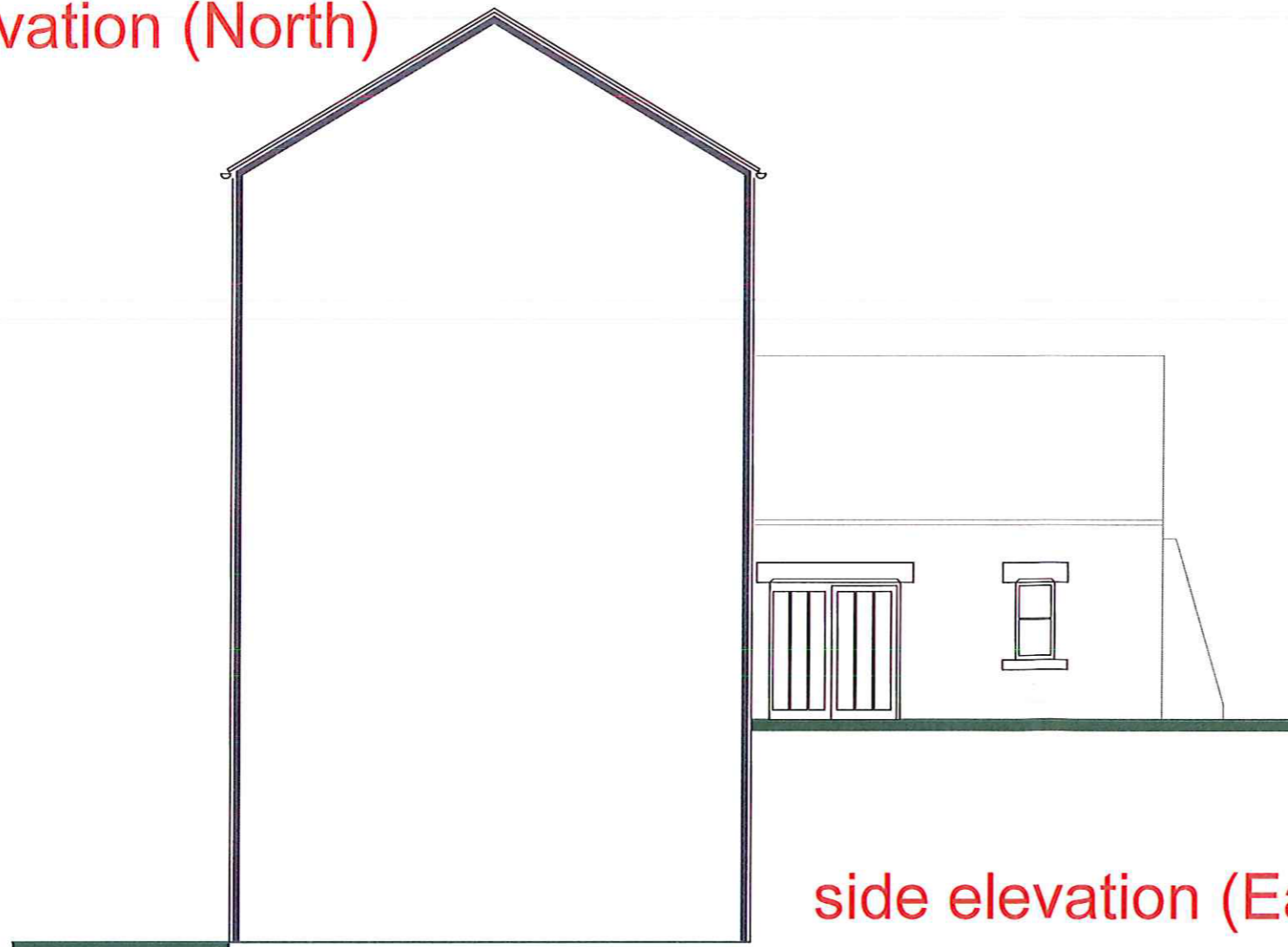


rear elevation (North)



West Elevation - 1:100

side elevation (West)



side elevation (East)

Planning



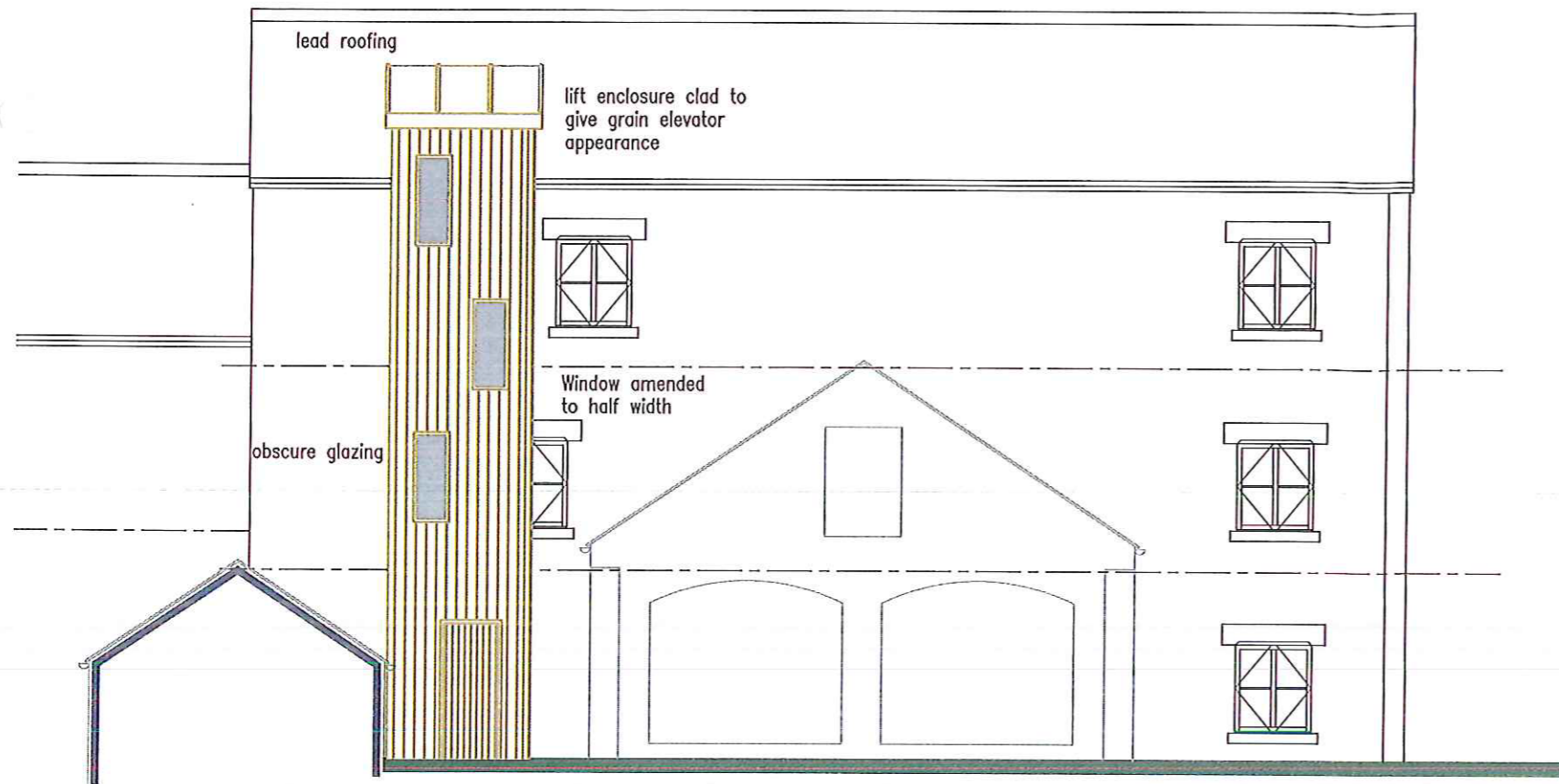
Amendments		

DO NOT SCALE FROM THIS DRAWING. IF IN DOUBT PLEASE ASK
 ALL DIMENSIONS MUST BE CHECKED ON SITE WHERE POSSIBLE
 THIS DRAWING MUST NOT BE REPRODUCED IN WHOLE OR PART WITHOUT
 WRITTEN AUTHORITY

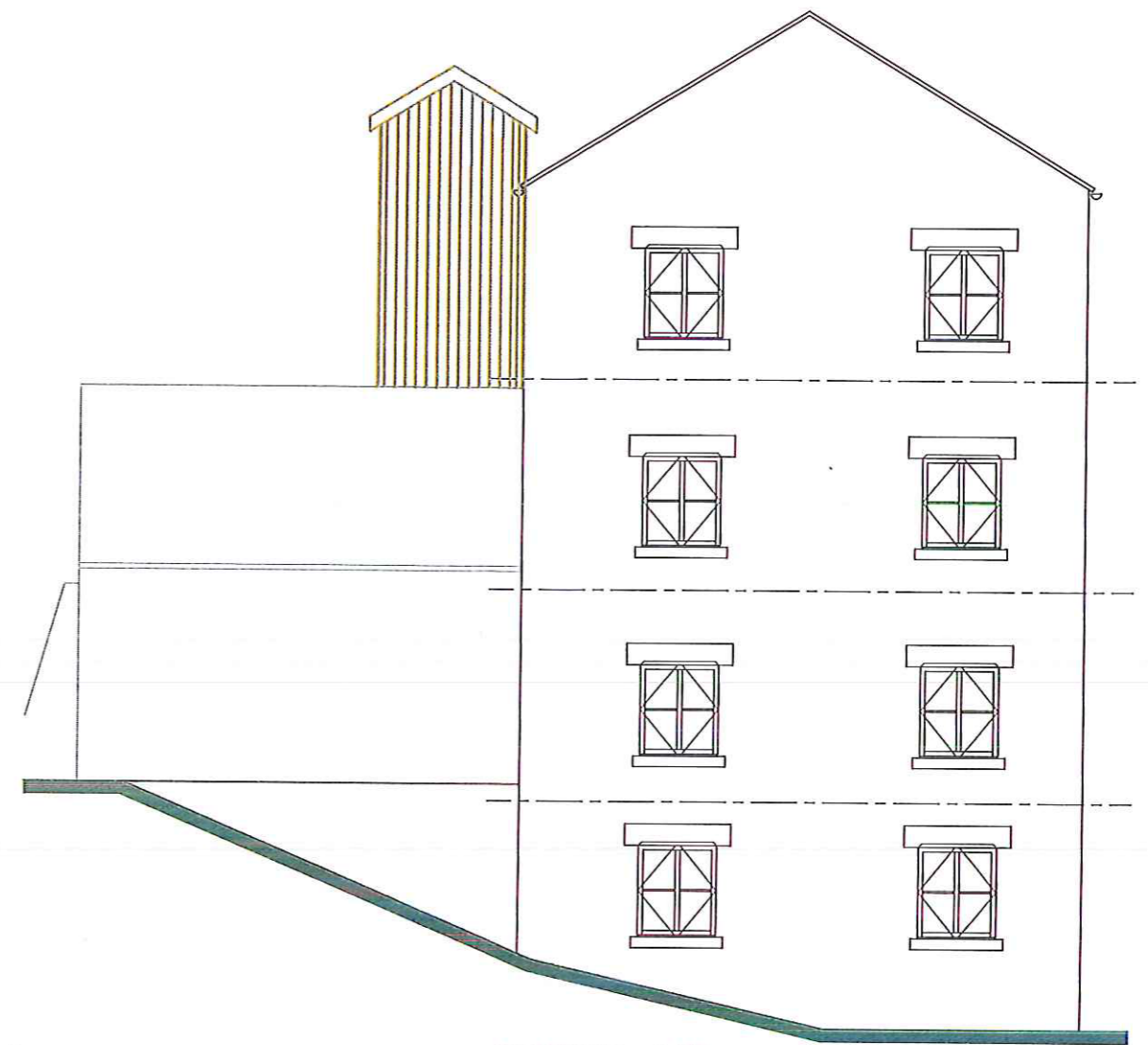
client The Burgess Group
 project Victory Mill, Thornton Le Dale
 title Lift Proposals (existing elevations)
 inh ref 15/R29/11

1:100

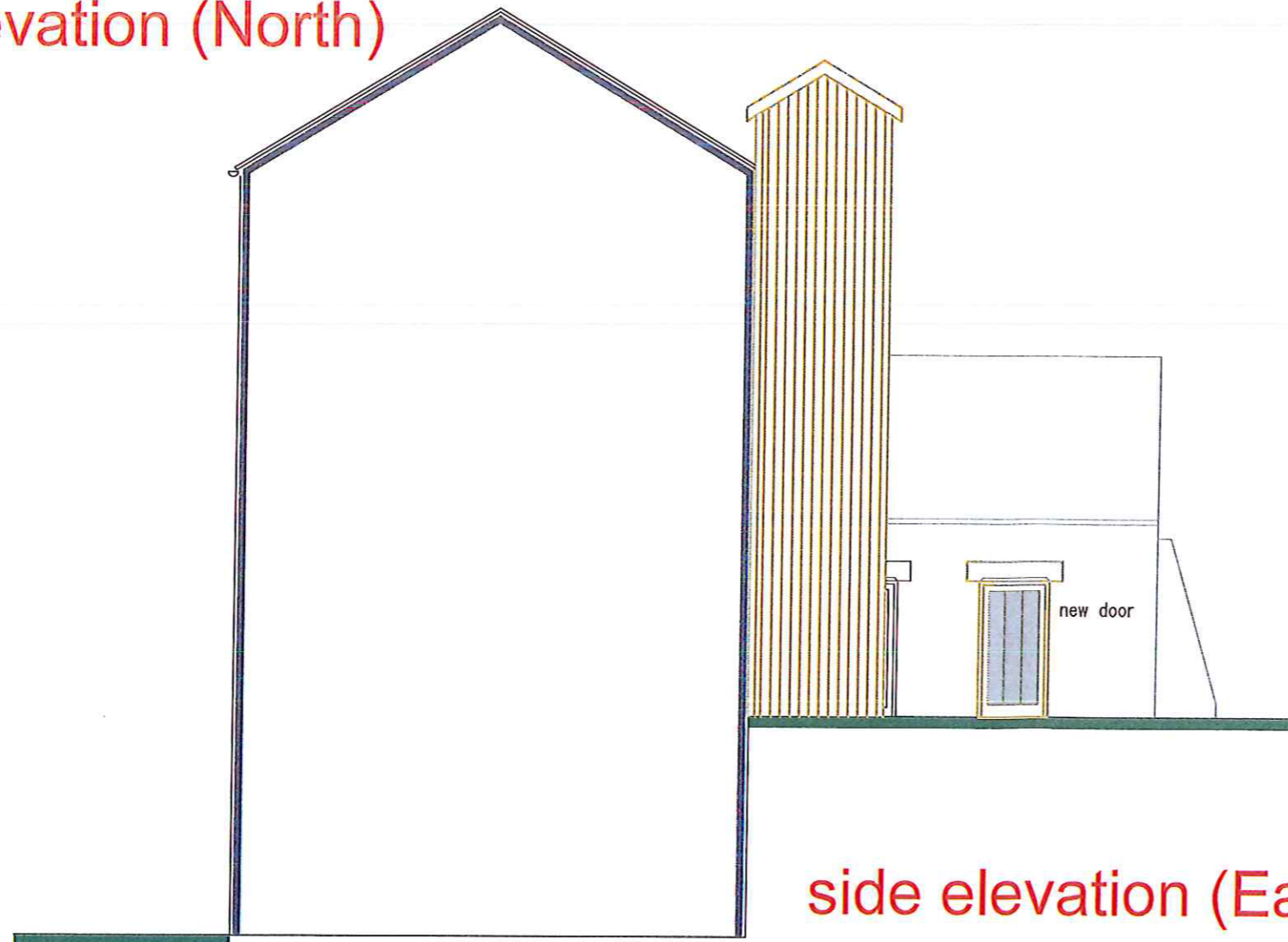
@ A3



rear elevation (North)



side elevation (West)



side elevation (East)

NYMNP
18 APR 2016

Planning



Amendments

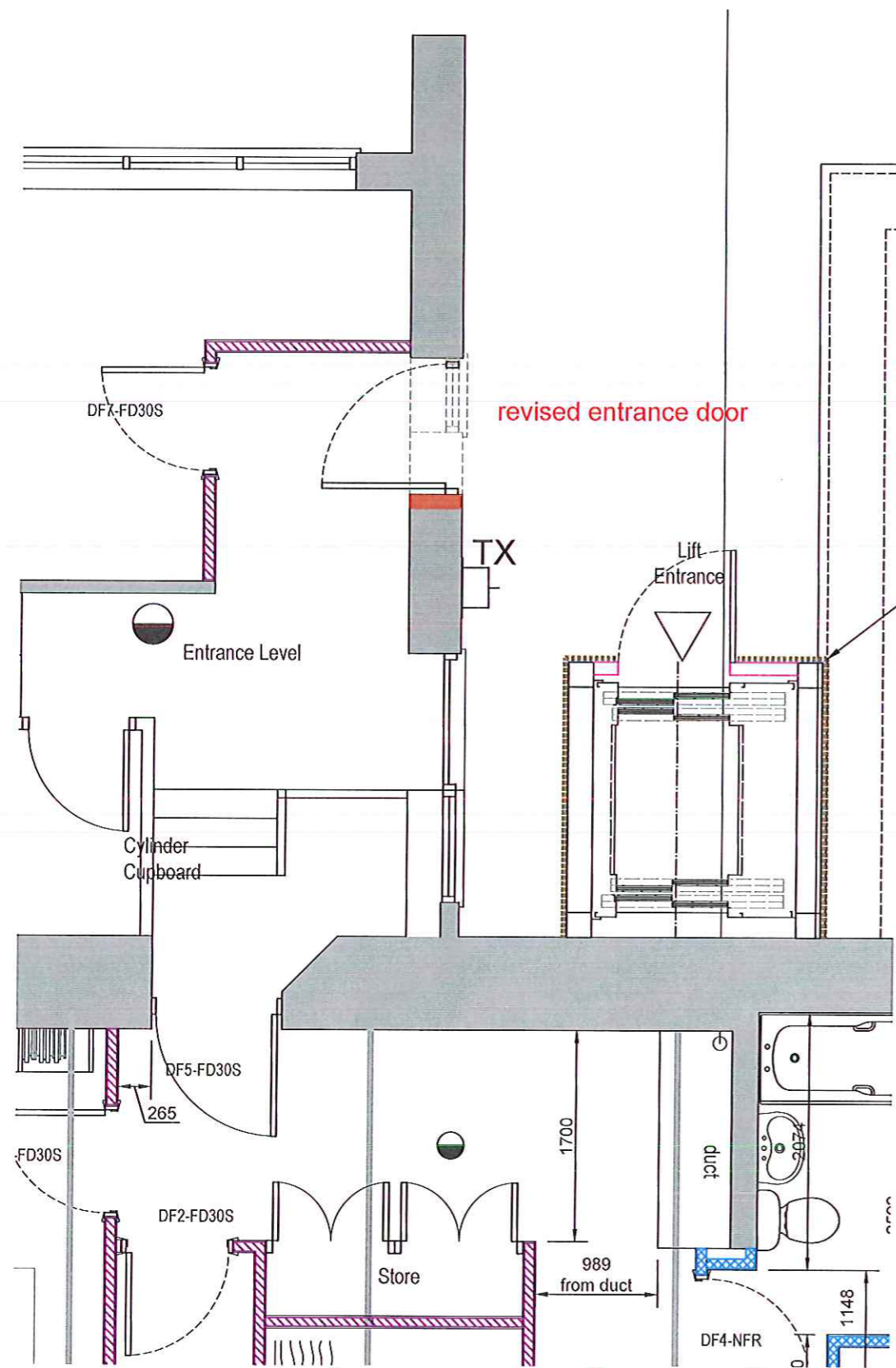
DO NOT SCALE FROM THIS DRAWING. IF IN DOUBT PLEASE ASK ALL DIMENSIONS MUST BE CHECKED ON SITE WHERE POSSIBLE THIS DRAWING MUST NOT BE REPRODUCED IN WHOLE OR PART WITHOUT WRITTEN AUTHORITY

client The Burgess Group
project Victory Mill, Thornton Le Dale
title Lift Proposals (elevations)
inh ref 15/R29/10

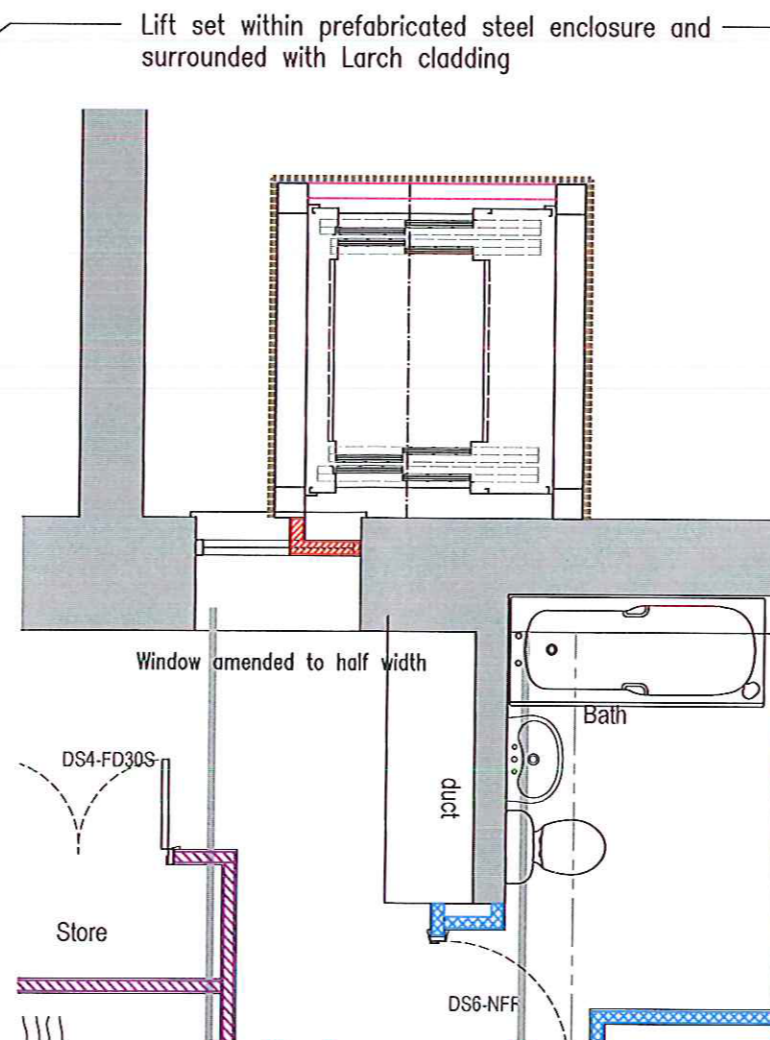
1:100

@ A3

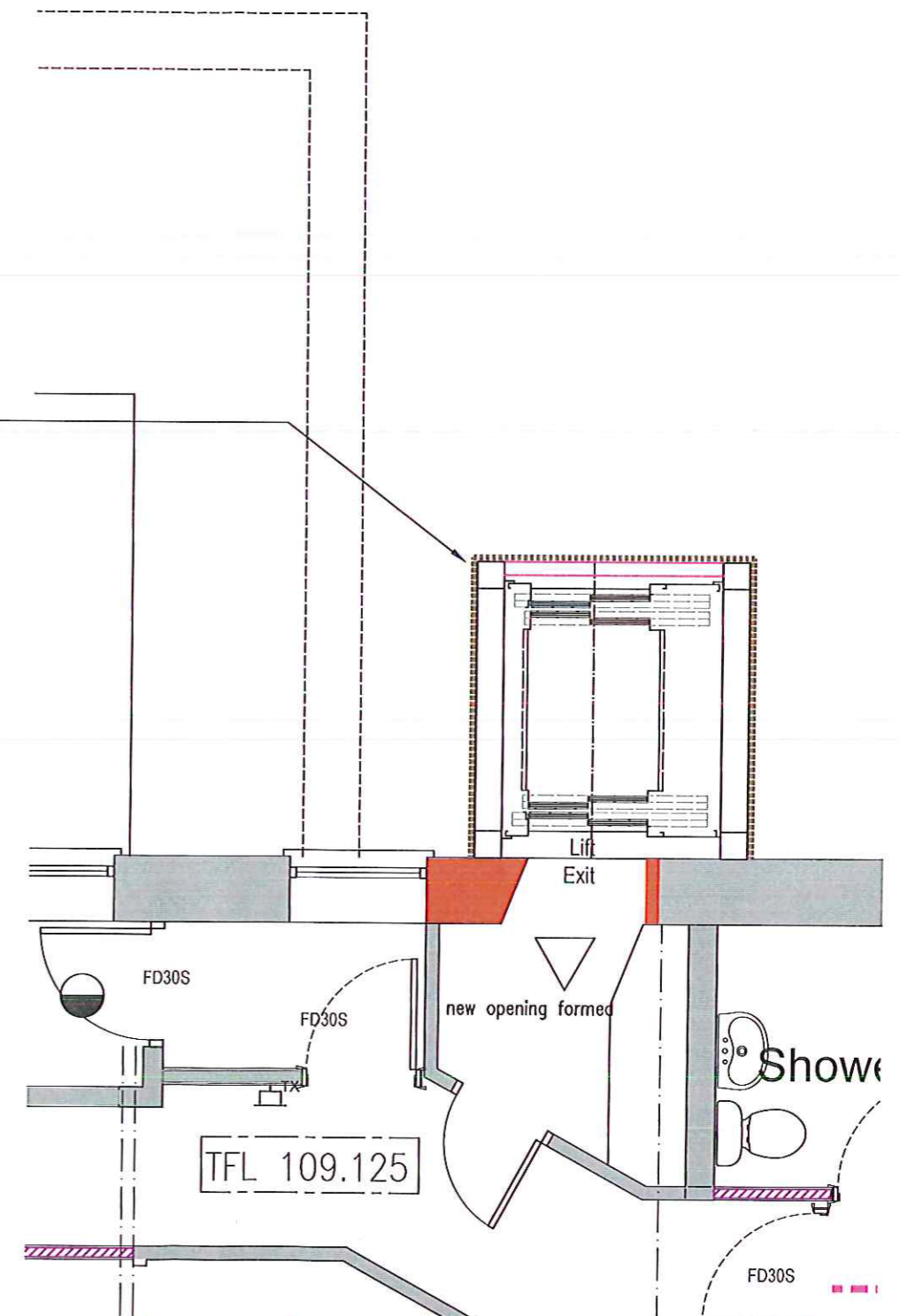
PRELIMINARY



entrance level



mid level



top level



Amendments

DO NOT SCALE FROM THIS DRAWING. IF IN DOUBT PLEASE ASK ALL DIMENSIONS MUST BE CHECKED ON SITE WHERE POSSIBLE THIS DRAWING MUST NOT BE REPRODUCED IN WHOLE OR PART WITHOUT WRITTEN AUTHORITY

client The Burgess Group
 project Victory Mill, Thornton Le Dale
 title Lift Proposals (Plans)
 inh ref 15/R25/09

1:50

@ A3