

WORKSHOP/STUDIO BROOKLEA

1:25

FYLINGDALE INN
BIN STORE

GRAVE
DRIVE

3" CLEAR
SHEET

3" CEMENT
FIBRE
SHEET

CLEAR

2.85m

4.85m

FOOTPATH

TILE RETAINING

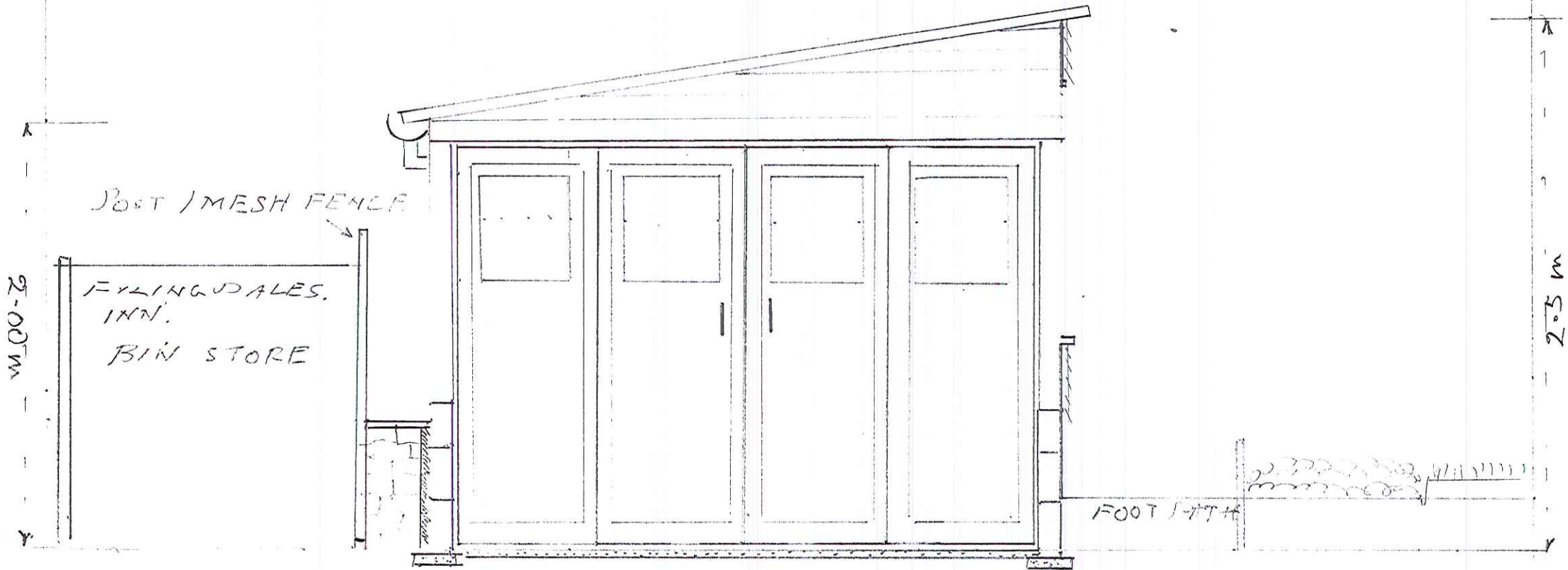
BORDER

PALM TREE

PALE TREE

WORKSHOP / STUDIO BROOKLEA.

1:25

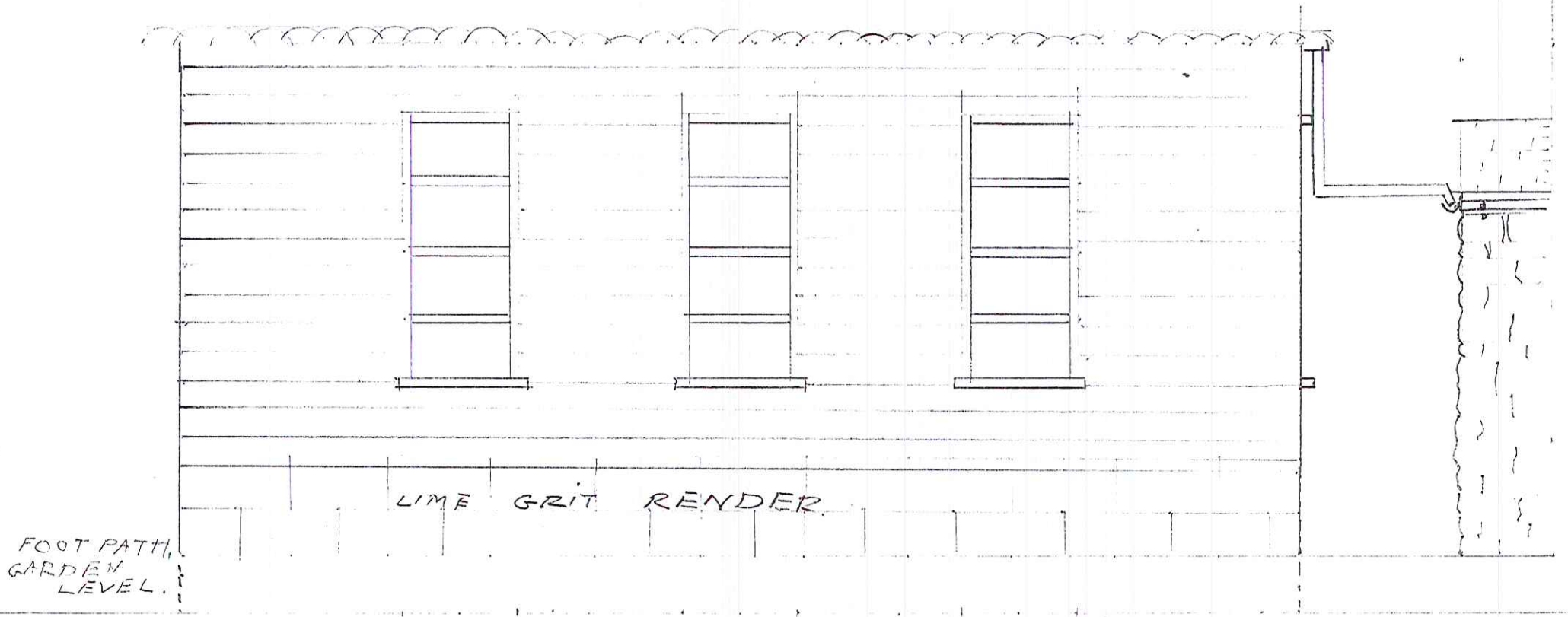


WORKSHOP/STUDIO BROOKLEA

1:25

100MM BLOCK BASE ON TRIP FOUNDATION
100MM WOODEN FRAME. PLY INTERNAL CLADDING
SHIPLAP EXTERNAL CLADDING ON ALL FACES. LIGHT DROWN
3 WINDOWS TO GARDEN SIDE. 1 TO HOUSE SIDE. IN ENTRANCE DOOR
4 BIFOLD DOORS AT ENTRANCE.
WATER GOODS. 100MM ROUND TO EXISTING BUILDING
ROOF 75MM CEMENT FIBRES SHEET 2x CLEAR SHEET
MANS. STRIP LIGHTING 7 DOUBLE GANG POWER SOCKETS

HOUSE →



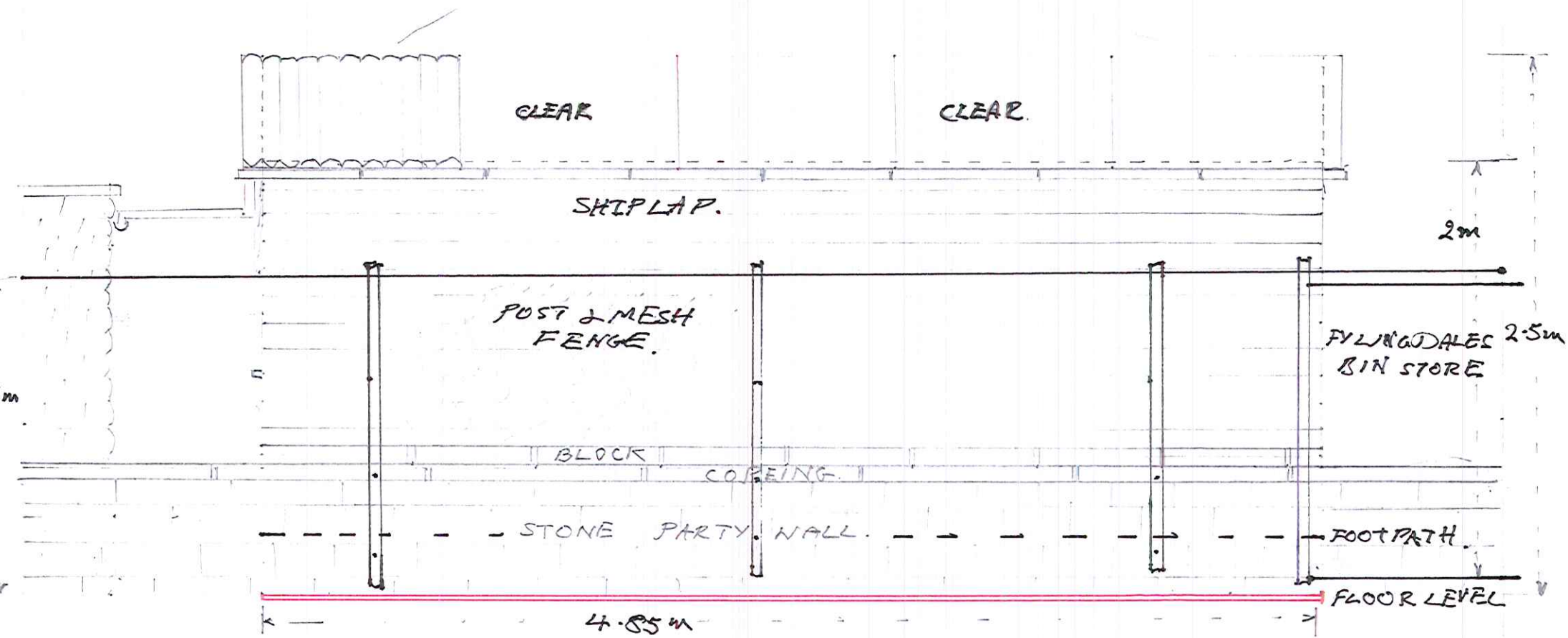
LIME GRIT RENDER

FOOT PATH,
GARDEN
LEVEL.

REAR ELEVATION 1/25.

NYMNP
- 8 JUL 2016

CEMENT / FIBRE.



END ELEVATION

BLIND END

1/25.

NYMNP
- 8 JUL 2016

