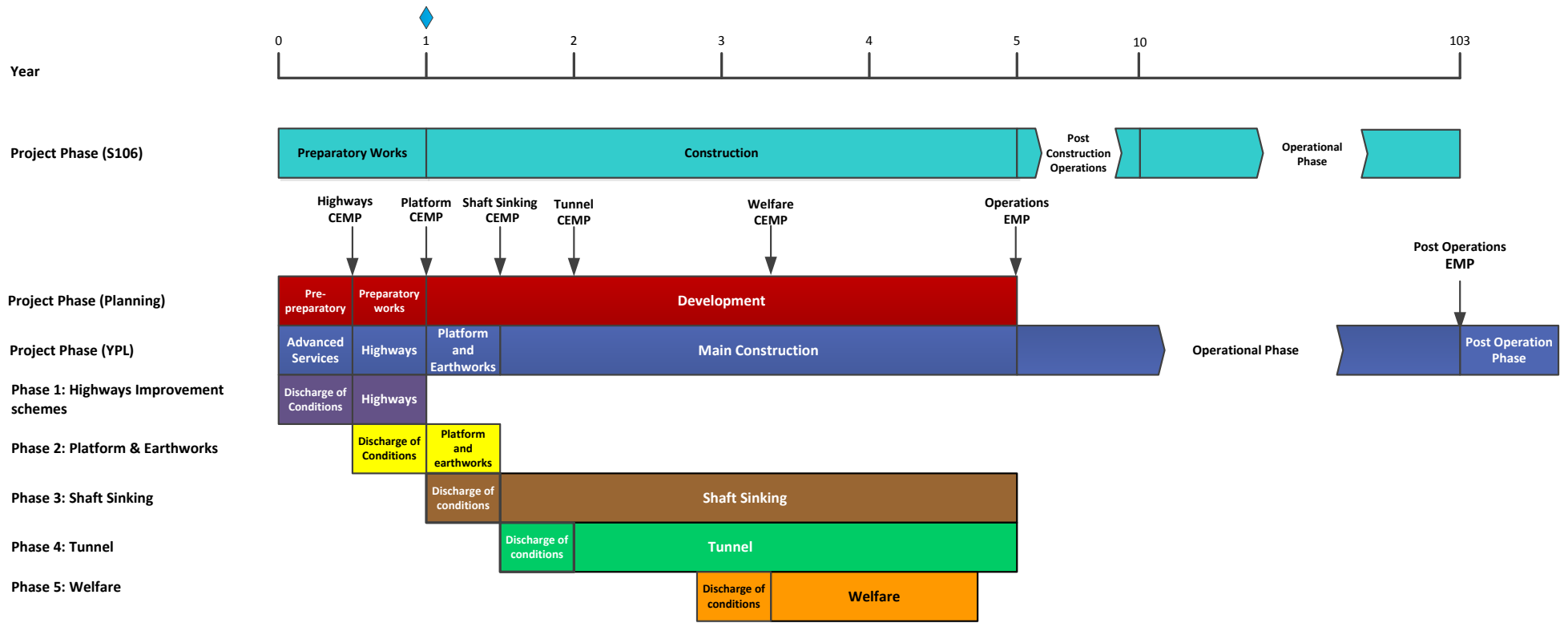


**NYMNP North York Moors National Park Authority
Condition 4 – Phasing Plan
Phase 2 - Platform and Earthworks**



Conditions requiring a phased approach

Condition	Year 0-1	Year 1-2	Year 2-3	Year 3-4	Year 4-5	Year 5-10	Year 10-103
NYMNP 4: Phasing Plan	◆	◆	◆	◆	◆		
NYMNP 18: Noise & Vibration Management Plan	◆	◆	◆	◆	◆		
NYMNP 34: Construction Traffic Management Plan	◆	◆	◆	◆	◆		
NYMNP 46: Ground Water & Surface Water Monitoring Scheme		◆	◆	◆	◆		
NYMNP 47: Groundwater Management Scheme		◆	◆	◆	◆		
NYMNP 52: Protected Species Management Plan	◆	◆	◆	◆	◆		
NYMNP 57: Landscape & Ecological Management Plan		◆	◆	◆	◆		
NYMNP 60: Surface Water Management System		◆	◆	◆	◆		
NYMNP 64: Temporary Boundary Treatment	◆	◆	◆	◆	◆		
NYMNP 68: Temporary Structures		◆	◆	◆	◆		
NYMNP 70: Protection and Management of Trees & Vegetation	◆	◆	◆	◆	◆		
NYMNP 76: Soil Management Plan	◆	◆	◆	◆	◆		
NYMNP 79: Surface Water Drainage Scheme		◆	◆	◆	◆		
NYMNP 92: Construction Vehicle Management Plan		◆	◆	◆	◆		
NYMNP 93: CEMP	◆	◆	◆	◆	◆		
NYMNP 94: Construction Method Statement	◆	◆	◆	◆	◆		
NYMNP 95: Written Scheme of Investigation	◆	◆	◆	◆	◆		

NYMNP-North York Moors National Park Authority
CEMP-Construction Environmental Management Plan

- ◆ Commencement of Construction/ Development
- ◆ Highways Contract
- ◆ Platform & Earthworks
- ◆ Detail provided in Highways CEMP
- ◆ Shaft Sinking
- ◆ Tunnel
- ◆ Welfare