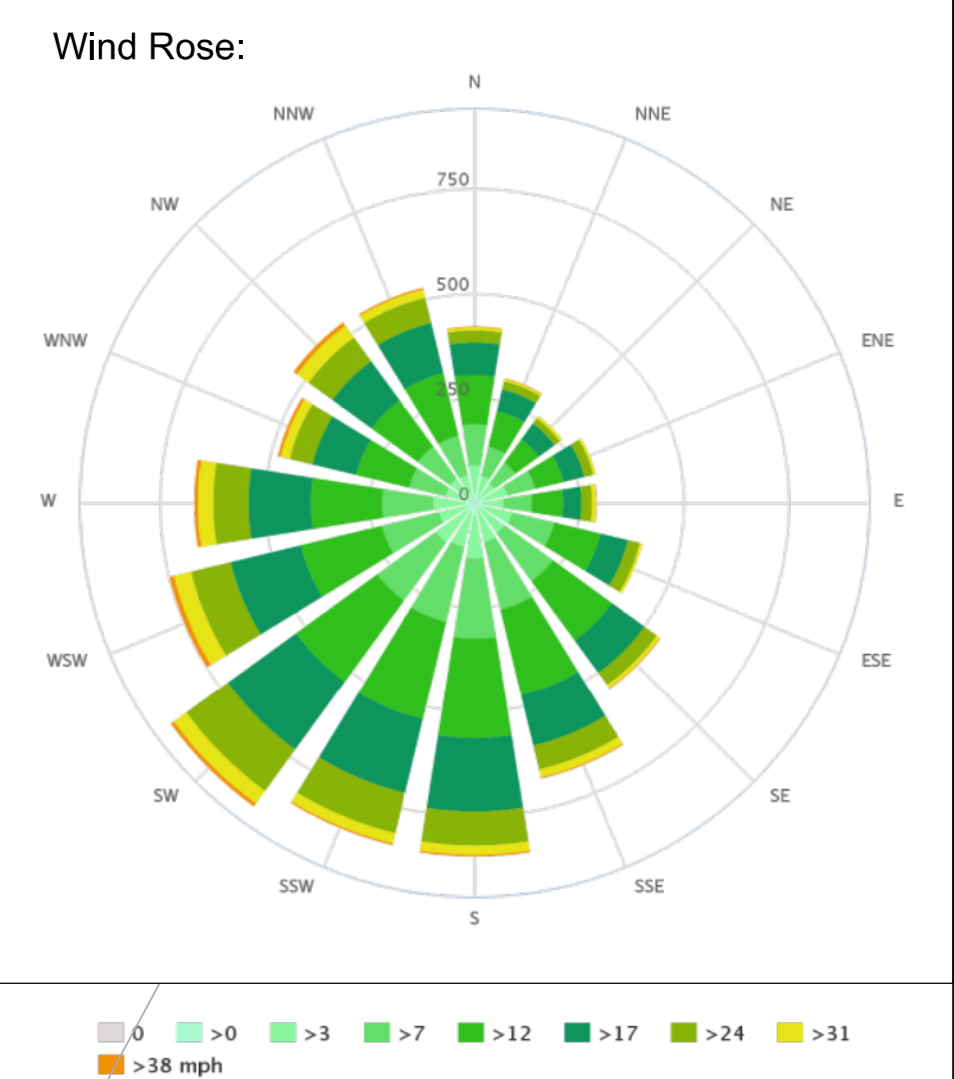


- Notes:
- Dewatering during phase 3 to a maximum of 3m below platform level.
- Key:
- Land ownership boundary
 - Construction Phase Security Fence
 - Temporary Heras Fence
 - Topographical survey
 - Proposed layout
 - 3m high Environmental / acoustic barrier
 - Safety Bund
 - Proposed drainage ditch
 - Surface water drainage attenuation pond
 - Surface water drainage wetland
 - Telecommunication mast
- Key to utilities:
- Existing Northern Powergrid electrical apparatus



0	31/03/17	JB	CW	AH
Issued for Planning				
D	30/03/17	JB	CW	AH
Draft for comment				
C	14/03/17	JB	CW	AH
Draft				
B	22/02/17	JB	CW	AH
Draft				
A	13/02/17	JB	CW	AH
Draft				
Issue	Date	By	Chkd	Appd

ARUP

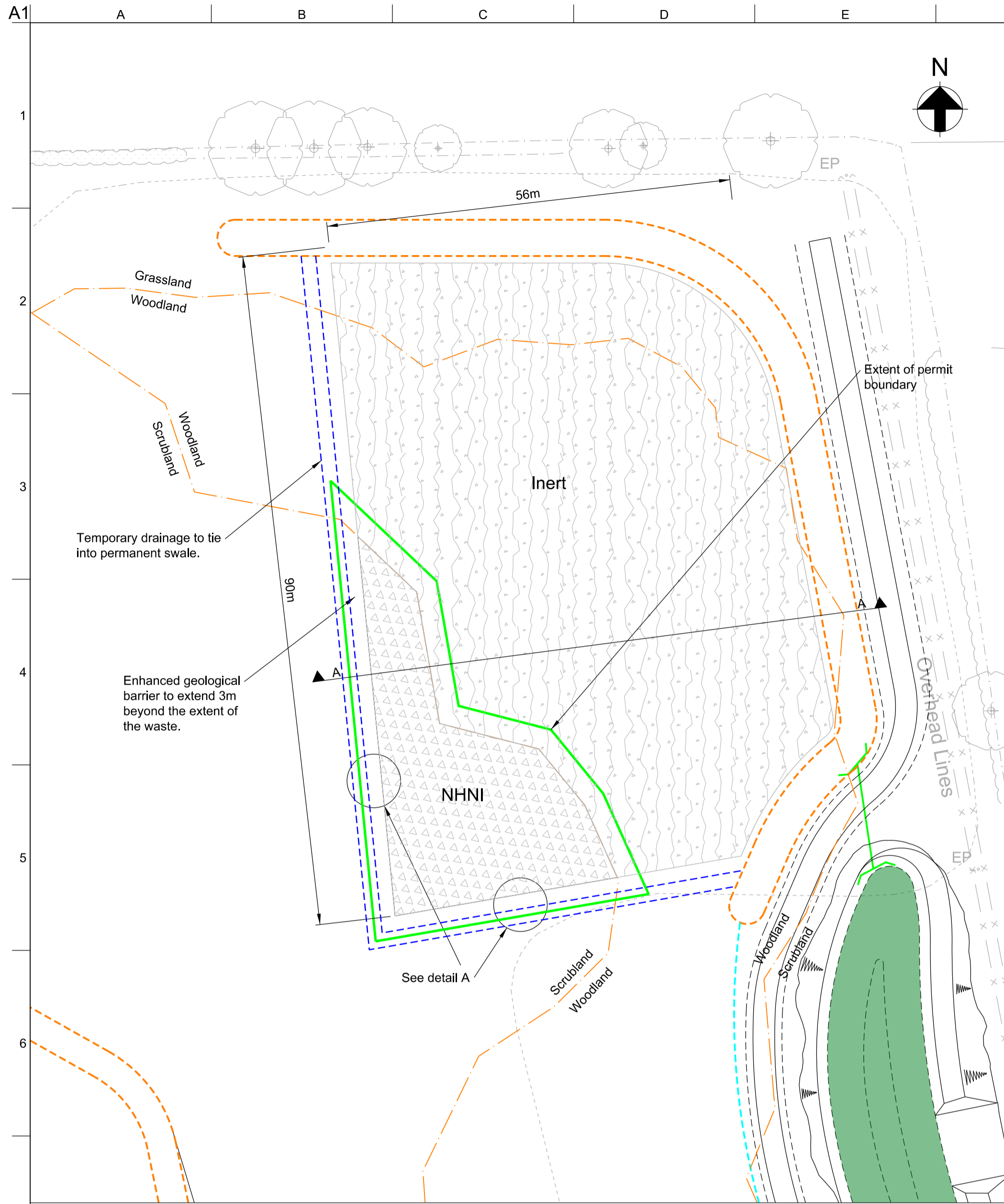
Admiral House, Rose Wharf,
75 East Street, Leeds, LS9 8EE
www.arup.com

Client
Sirius Minerals Plc

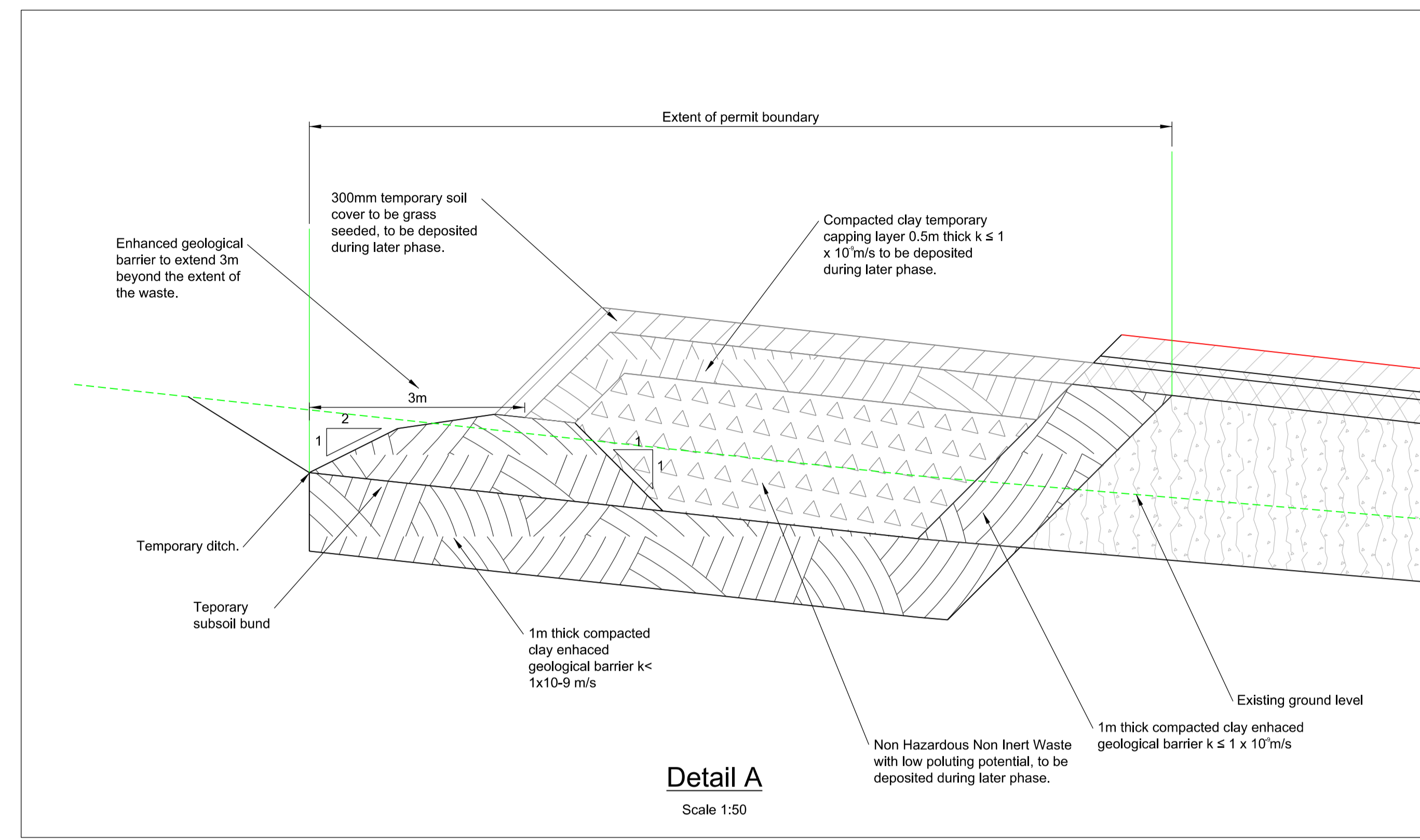
Job Title
**Woodsmith Mine
Proposed Minehead**

**Woodsmith Mine
Construction Phase 3
Masterplan**

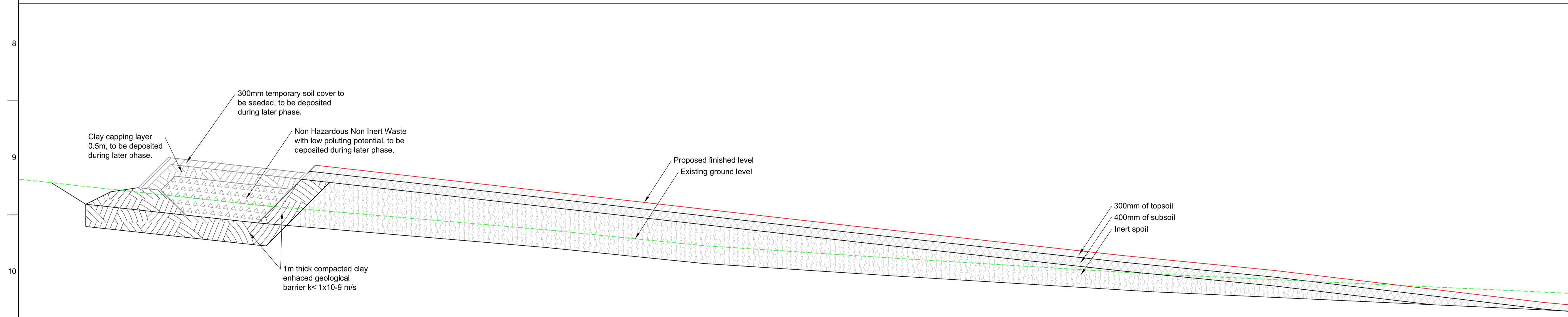
Scale at A1 1:2000
Discipline Highways
Job No 253285
Drawing Status Planning
Drawing No 40-ARI-WS-71-CI-DR-1050
Issue 0



Plan
Scale 1:500



Detail A
Scale 1:50



Section A-A
Scale 1:100

- Notes:
- Restoration area designation from Estell Warren drawing 2309-MH03.
 - Restoration topsoil and subsoil thickness from 2322 landscape appendix1_doves nest farm_rev00.
 - Contractor to manage surface water to minimise ponding and silt run off.
 - Only non-hazardous non-inert spoil with low polluting potential to be deposited within the storage area.
 - NHNI spoil to be compacted in layers not exceeding 300mm thick, 6 passes of a vibrating roller with mass = 3500kg/m width.

Volume within waste storage facility:

Inert = 3,900 m³
NHNI = 1,500m³

- Key:
- Proposed GL
 - - - Existing GL
 - Permit boundary
 - Enhanced geological barrier
 - NHNI waste
 - Inert waste
 - Restoration soil
 - Wetland

0	31/03/17	JB	CW	AH
Issued for Construction				
C	30/03/17	JB	CW	AH
Draft				
B	17/03/17	JB	TC	AH
Draft				
A	10/03/17	KK	TC	AH
Draft Issue				
Issue	Date	By	Chkd	Appd

ARUP

Admiral House, Rose Wharf,
79 East Street, Leeds, LS9 8EE
www.arup.com

Client
Sirius Minerals Plc

Job Title
Woodsmith Mine

**Woodsmith Mine Site
Phase 3 NHNI Store
General Arrangement**

Scale at A1 As shown
Discipline Drainage
Job No **253285** Drawing Status **Planning**
Drawing No **40-ARI-WS-71-CI-DR-1055** Issue **0**