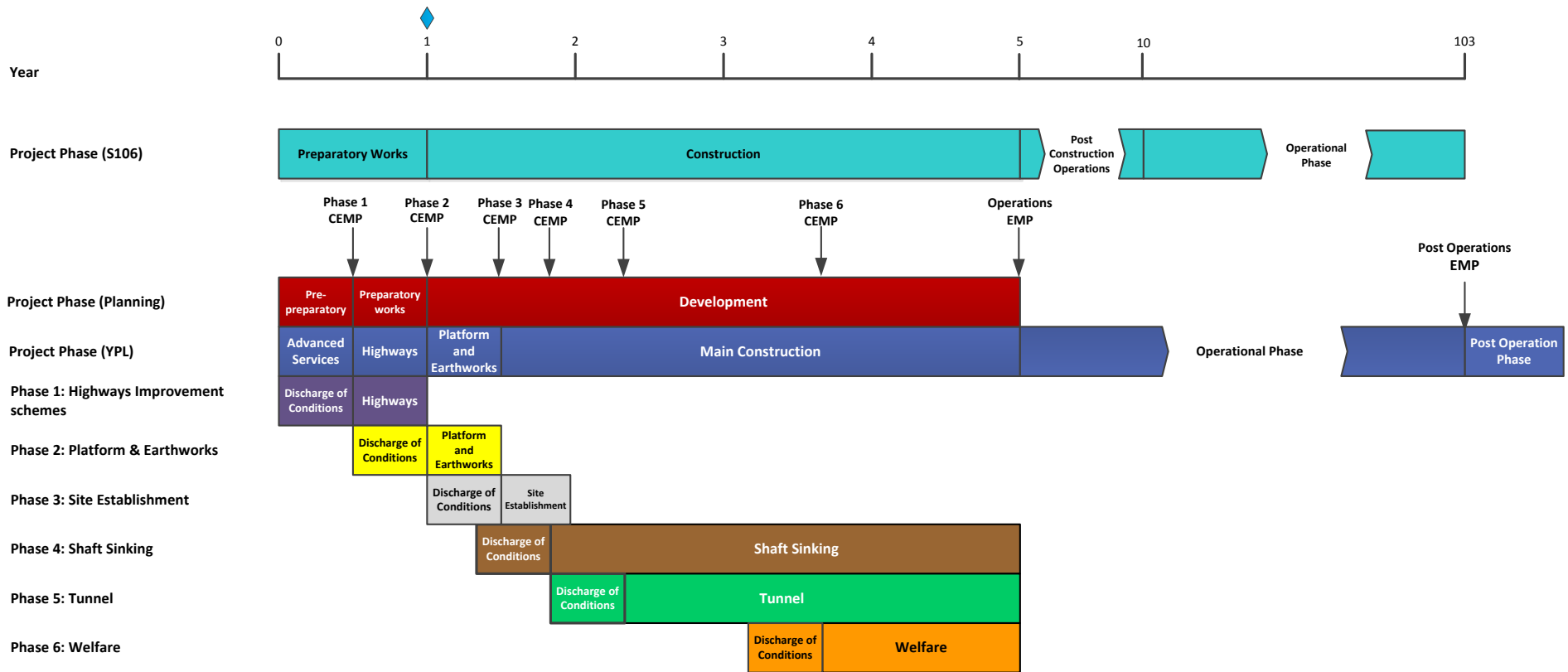


NYMNP NYM/2014/0676/MEIA
Condition 4 – Phasing Plan
Phase 3 – Site Establishment – Woodsmith Mine



Conditions requiring a phased approach

NYMNP 4: Phasing Plan	◆	◆	◆	◆	◆	◆	◆
NYMNP 18: Noise & Vibration Management Plan	◆	◆	◆	◆	◆	◆	◆
NYMNP 34: Construction Traffic Management Plan	◆	◆	◆	◆	◆	◆	◆
NYMNP 46: Ground Water & Surface Water Monitoring Scheme		◆	◆	◆	◆	◆	◆
NYMNP 47: Groundwater Management Scheme		◆	◆	◆	◆	◆	◆
NYMNP 52: Protected Species Management Plan	◆	◆	◆	◆	◆	◆	◆
NYMNP 57: Landscape & Ecological Management Plan		◆	◆	◆	◆	◆	◆
NYMNP 60: Surface Water Management System		◆	◆	◆	◆	◆	◆
NYMNP 64: Temporary Boundary Treatment	◆	◆	◆				
NYMNP 68: Temporary Structures		◆	◆	◆	◆	◆	◆
NYMNP 70: Protection and Management of Trees & Vegetation	◆	◆	◆	◆	◆	◆	◆
NYMNP 76: Soil Management Plan	◆	◆	◆	◆	◆	◆	◆
NYMNP 79: Surface Water Drainage Scheme		◆	◆	◆	◆	◆	◆
NYMNP 92: Construction Vehicle Management Plan		◆	◆	◆	◆	◆	◆
NYMNP 93: CEMP	◆	◆	◆	◆	◆	◆	◆
NYMNP 94: Construction Method Statement	◆	◆	◆	◆	◆	◆	◆
NYMNP 95: Written Scheme of Investigation	◆	◆	◆	◆	◆	◆	◆

NYMNP-North York Moors National Park Authority
 CEMP-Construction Environmental Management Plan

- ◆ Commencement of Construction/Development
- ◆ Highways Contract
- ◆ Platform & Earthworks
- ◆ Detail provided in Highways CEMP
- ◆ Site Establishment
- ◆ Shaft Sinking
- ◆ Tunnel
- ◆ Welfare