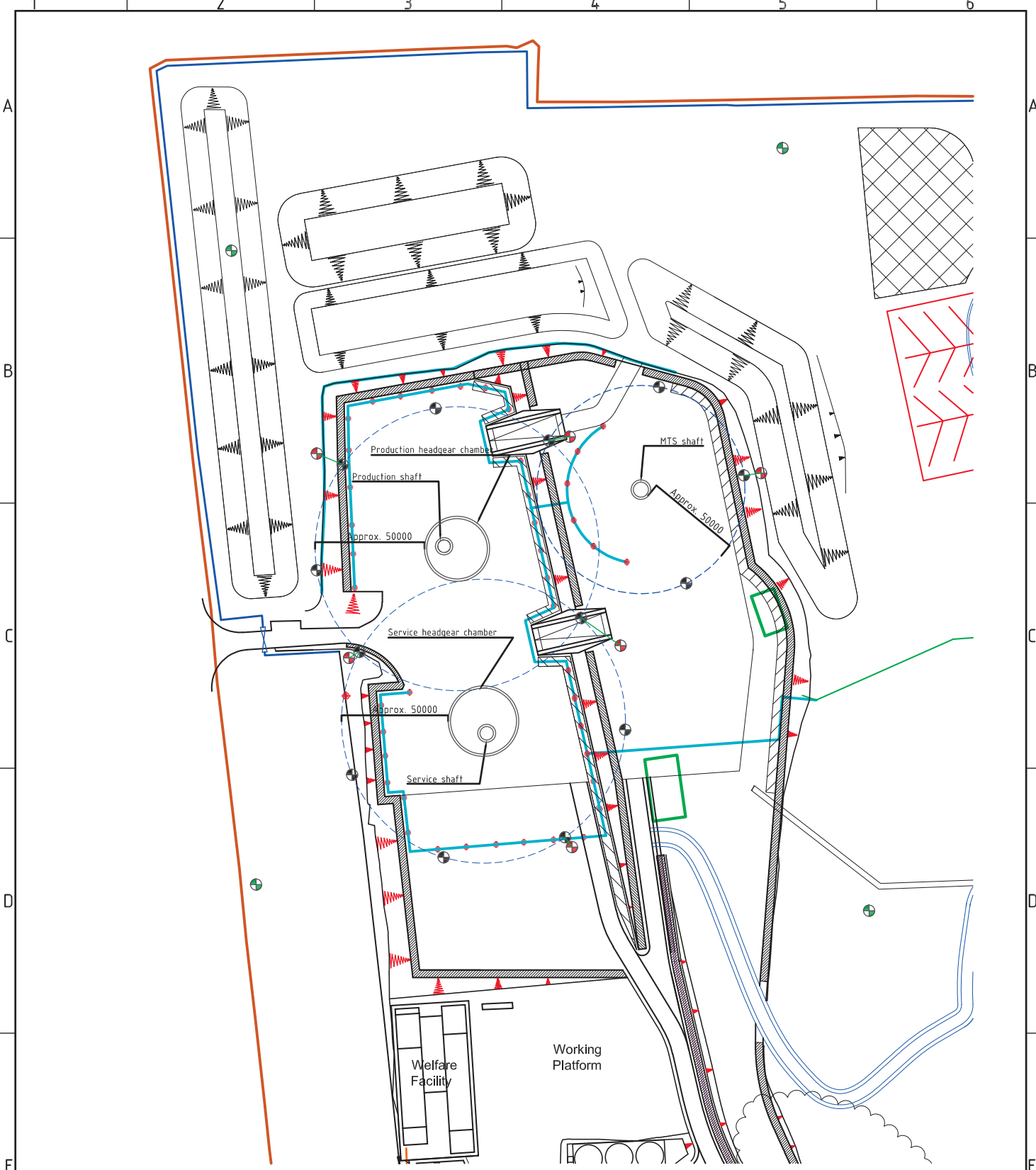


The reproduction, distribution and utilization of this document as well as the communication of its contents to others without expressed authorization is prohibited. Offenders will be held liable for the payment of damages. All rights reserved in the event of the grant of a patent, utility model or design.



| Legend | |
|--------|--|
| | Near-Field Groundwater Monitoring Locations |
| | Adjusted Near-Field Groundwater Monitoring Locations |
| | Far-Field Groundwater Monitoring Locations |

ISSUED FOR INFORMATION
NOT FOR CONSTRUCTION

| 0 | Issued for Sirius M. Information | Berber | 26.05.2017 | | | | |
|------|----------------------------------|----------|------------|------------|------|-------------|------|
| A | Issued for Sirius M. Review | Dobr | 16.05.2017 | | | | |
| Rev. | Revision Description | Drawn by | Date | Checked by | Date | Approved by | Date |

| | | | | | |
|---------|--|-------------|--|-------------------------|--|
| Client: | | Consultant: | | Consultant DRAWING NO.: | |
| | | | | | |

NORTH YORKSHIRE POLYHALITE PROJECT - MINE SHAFT
EARLY CONTRACTOR INVOLVEMENT
CIVIL ENGINEERING
Monitoring Programme Layout

| | | | | | | | |
|------------------|-------------|--------------|------------------|--------|------|-------------------------|------|
| Drawn by: | Checked by: | Approved by: | SMP Approved by: | SCALE | SIZE | DRAWING NO. | REV. |
| Dobr | | | | 1:2000 | A3H | 40-AMC-WS-10-CI-DR-0001 | 0 |
| Date: 16.05.2017 | Date: | Date: | Date: | | | | |

Weitergabe sowie Vervielfältigung dieses Dokuments, Verwertung und Mitteilung seines Inhalts sind verboten, soweit nicht ausdrücklich gestattet. Zuwiderhandlungen verpflichten zu Schadensersatz. Alle Rechte für den Fall der Patent-, Gebrauchsmuster- oder Geschmacksmusterberechtigung vorbehalten.