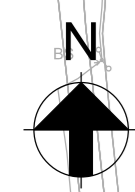


A1
1
2
3
4
5
6
7
8
9
10
11
12
13
14
15
16

A B C D E F G H I J K



Extension of swales to drain bund.

Tributary of Sneaton Thorpe Beck where additional temporary silt control measures are able to be installed.

Piped outfall to be kept for emergency use only.

Volume = 3700m³

Volume = 2500m³

Volume = 3700m³

Silt removal facility.

Tributary of Sneaton Thorpe Beck where additional temporary silt control measures are able to be installed.

Concrete Batching Plant overflow to surface water network for storm events greater than the 1 in 100 storm event. Refer to AMC Surface Water Management Plan.

Tributary of Sneaton Thorpe Beck where additional temporary silt control measures are able to be installed.

For continuation see inset plan

Notes:

- This drawing shows the proposed surface water drainage network for Site Preparation Phase 4.
- For surface water drainage features refer to drawings 40-ARI-WS-71-CI-DR-1071 to 74.

Key:

- Land Ownership Boundary
- Proposed General Arrangement layout
- Surface water drainage attenuation pond
- Wetland
- Existing watercourses / ditch
- Manhole and carrier pipe
- Swale
- Check dam
- Silt fence
- Ditch
- Ditch with impermeable liner
- Inlet / outlet headwall
- Filter drain
- Phase 4 works

0	25/05/17	JB	CW	AH
Issued for Planning				
A	23/05/17	JB	CW	AH
Issued for Planning				
Issue	Date	By	Chkd	Appd

ARUP

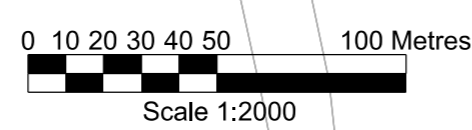
Admiral House, Rose Wharf,
78 East Street, Leeds, LS9 8EE
www.arup.com

Client
Sirius Minerals Plc

Job Title
**Woodsmith Mine
Proposed Minehead**

**Woodsmith Mine Site
Construction Phase 4
Drainage General Arrangement**

Scale at A1	1:2000
Discipline	Drainage
Job No	253285
Drawing Status	Planning
Drawing No	40-ARI-WS-71-CI-DR-1084
Issue	0



Inset Plan