



Home Office

# Emergency Services Mobile Communications Programme **Supporting Technical Information**

## for **EAS0074** : -

### Cockmoor Road

Planned LTE 800

Prepared by: Julian Williams BEng (Hons),MIET

Date: 11<sup>th</sup> December 2017

NYMNP/PA

28/03/2018



HM Government



CFOA  
Chief Fire Officers  
Association



ASSOCIATION OF  
**AMBULANCE**  
CHIEF EXECUTIVES



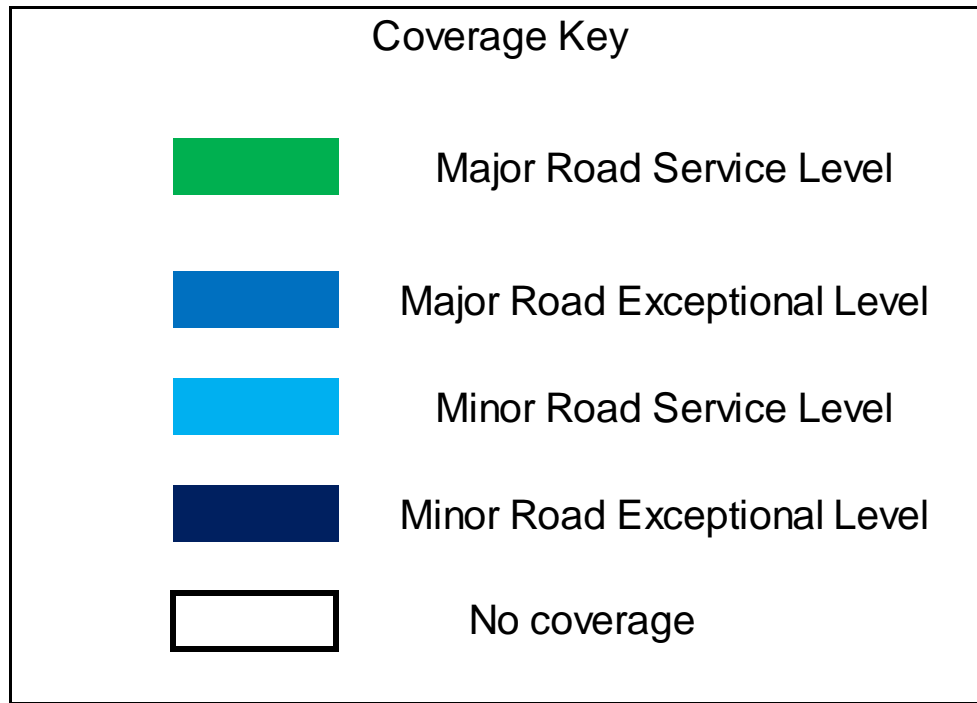
# Map of Area





## EAS0074

This site provides coverage to the Minor Roads (as defined by the ESN) in the following areas Ebberston Moor, Troutsdale Moor, Backleys and Wykeham Forest.



Major Road Service Level: - Required continuous signal level along a major road.

Major Road Exceptional Level – Allowable lower signal level for a short distance on a major road.

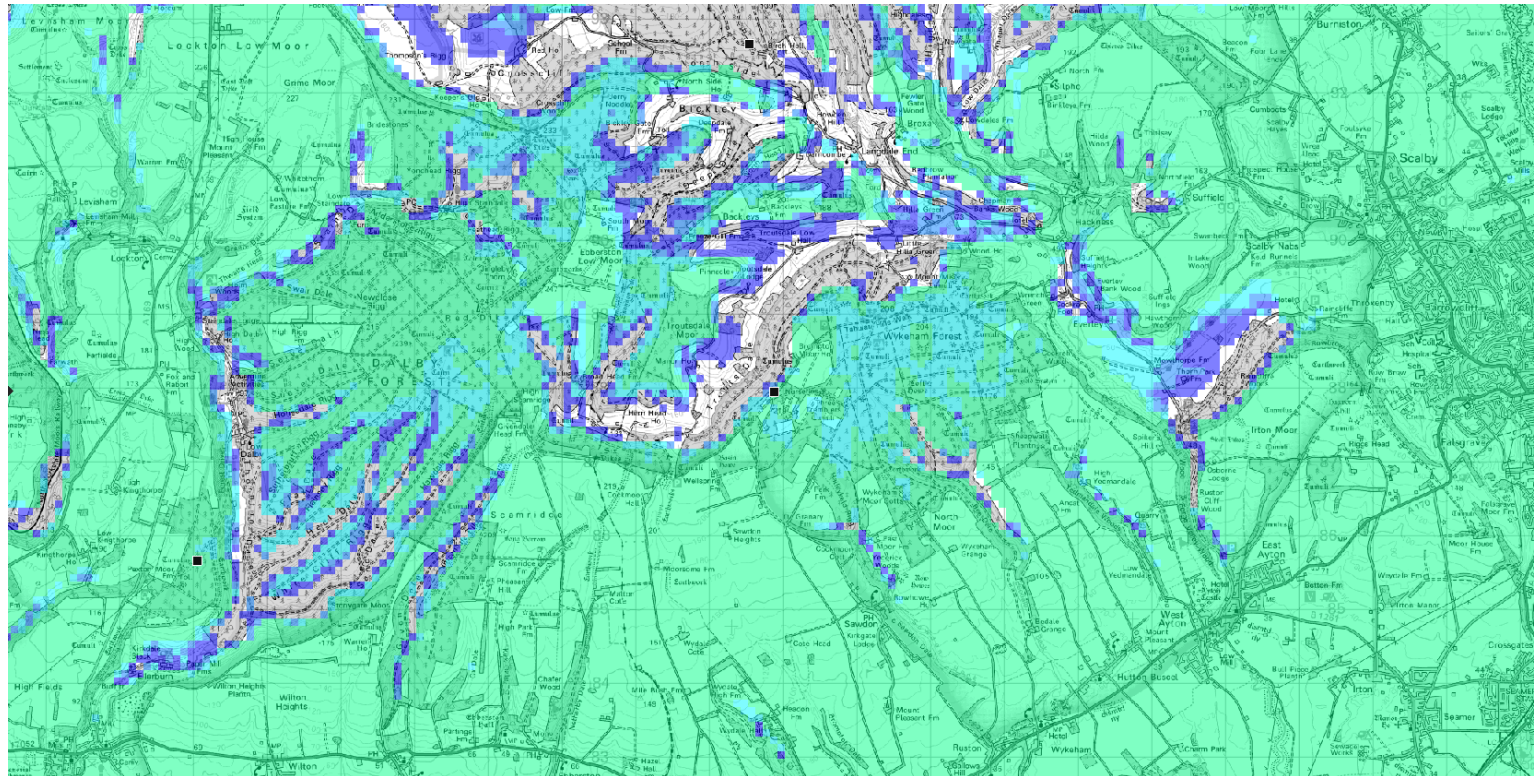
Minor Road Service Level: - Required continuous signal level along a minor road.

Minor Road Exceptional Level – Allowable lower signal level for a short distance on a minor road.





**EAS0074** – Existing L800 ESMCN coverage including proposed EE ESN coverage



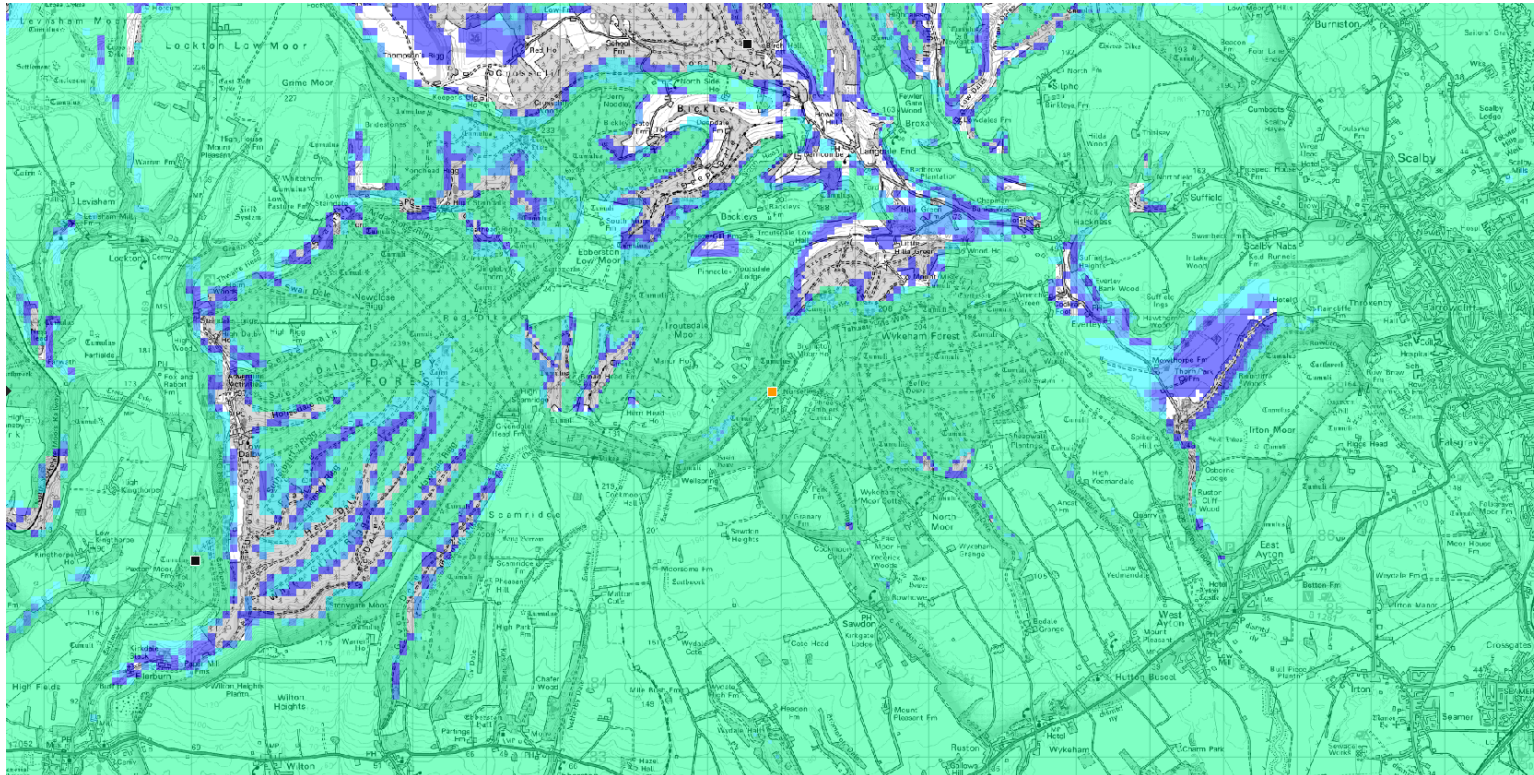
Note: This is predicted coverage using radio coverage planning software





# Home Office

**EAS0074** – Predicted L800 ESMCN coverage with new proposed site with antennas at 35m including EE ESN proposed coverage



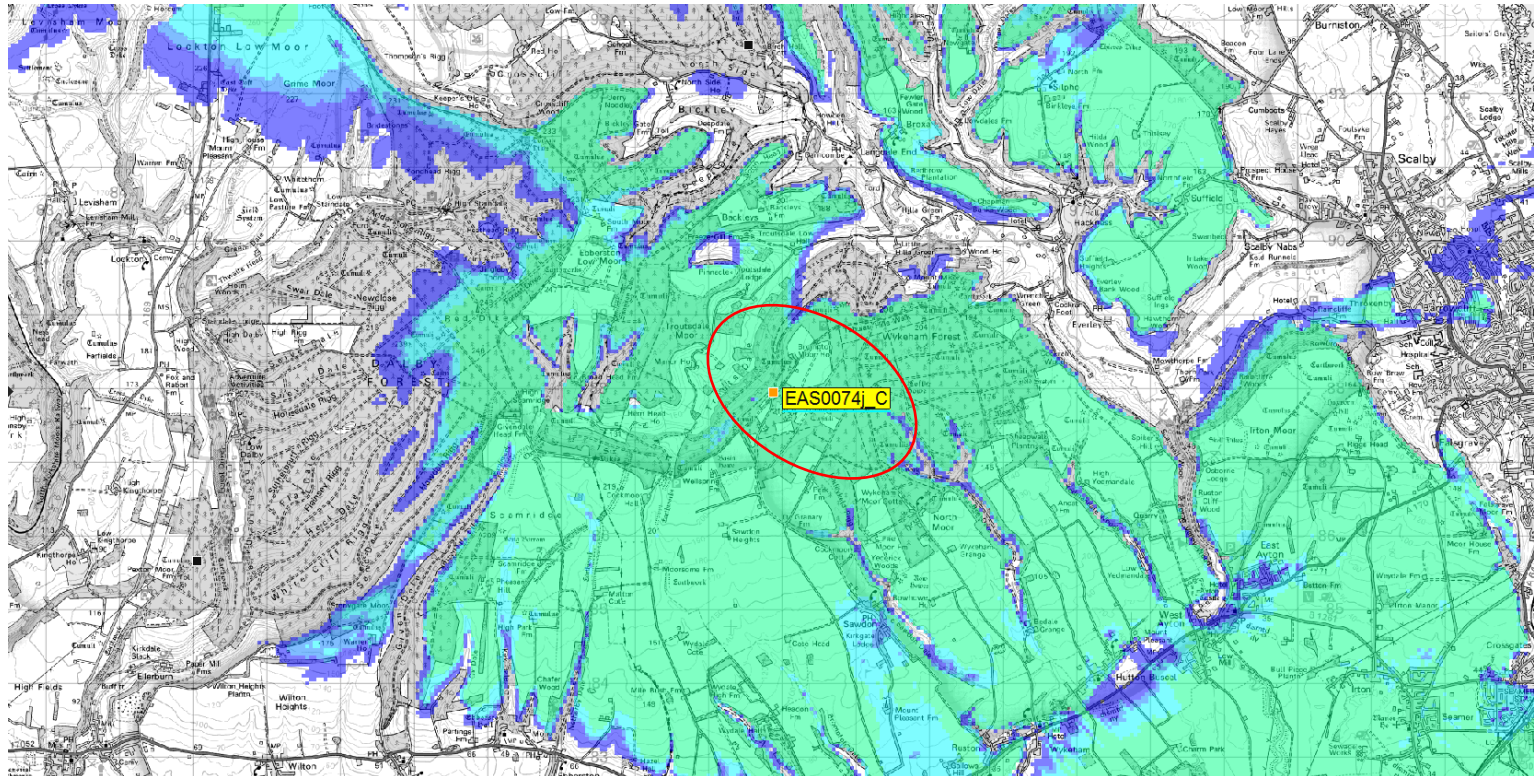
Note: This is predicted coverage using radio coverage planning software





# Home Office

**EAS0074** – Predicted L800 ESMCN coverage from new proposed site with antennas at 35m



Note: This is predicted coverage using radio coverage planning software



CFOA  
Chief Fire Officers  
Association



ASSOCIATION OF  
AMBULANCE  
CHIEF EXECUTIVES