



Home Office

Emergency Services Mobile Communications Programme **Supporting Technical Information**

for **EAS1021** : -

North Side Forestry Commission 2

Planned LTE 800

Prepared by: Julian Williams BEng (Hons) MIET Date: 20/07/2017

NYMNPA

28/03/2018



HM Government



CFOA
Chief Fire Officers
Association

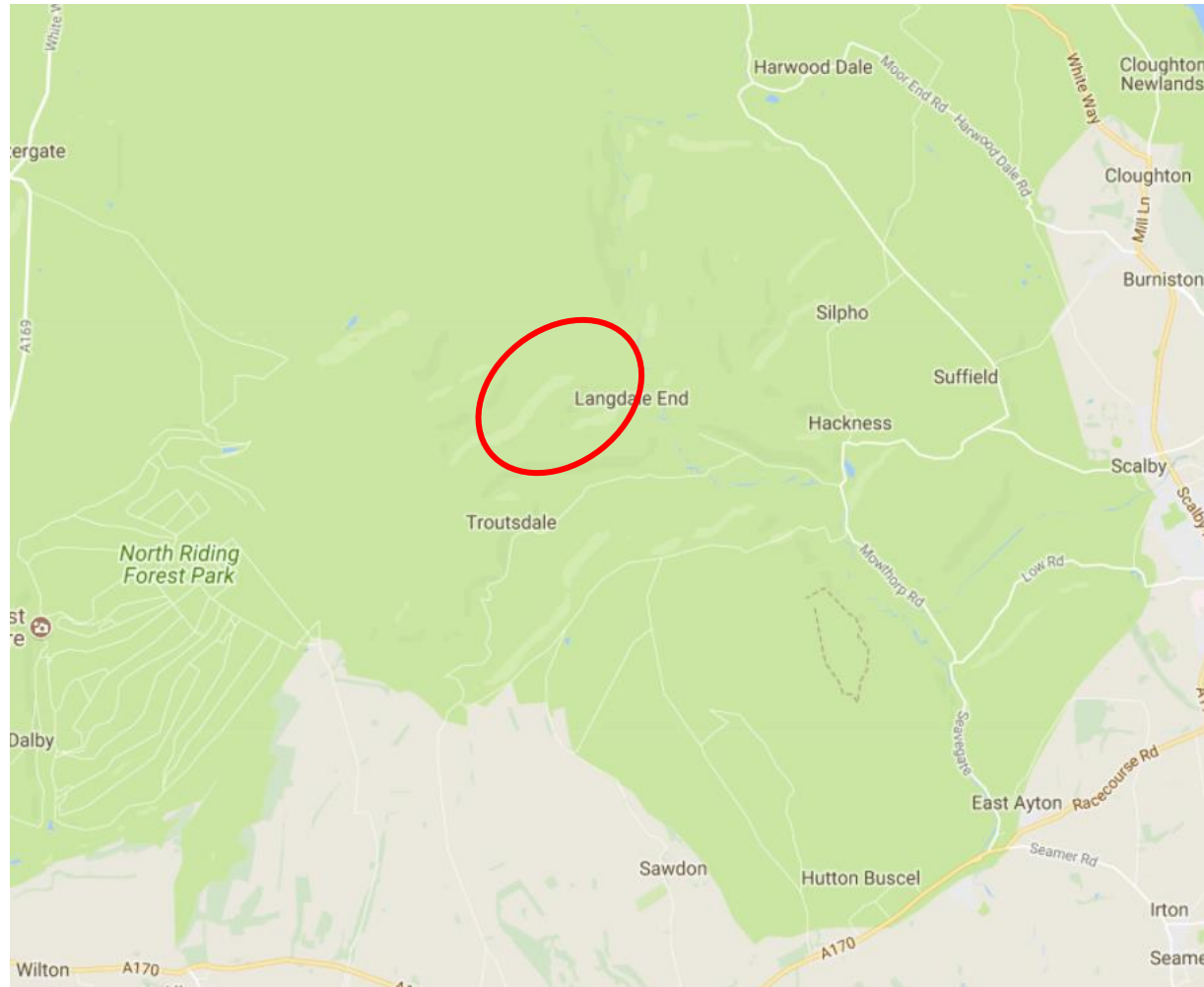


ASSOCIATION OF
AMBULANCE
CHIEF EXECUTIVES



Home Office

Map of Area



HM Government



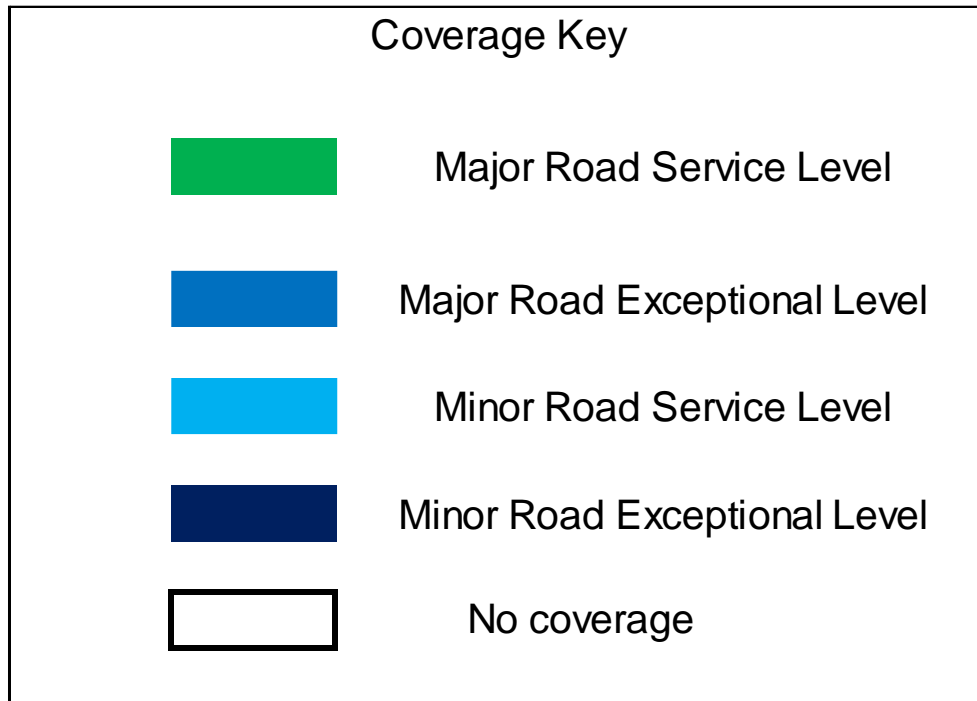
CFOA
Chief Fire Officers
Association



ASSOCIATION OF
AMBULANCE
CHIEF EXECUTIVES



Provides coverage to the Minor Roads (as defined by the ESN) of the North Yorkshire Moors National Park in the area of Langdale End, Bickley and to Crosscliff.



Major Road Service Level: - Required continuous signal level along a major road.

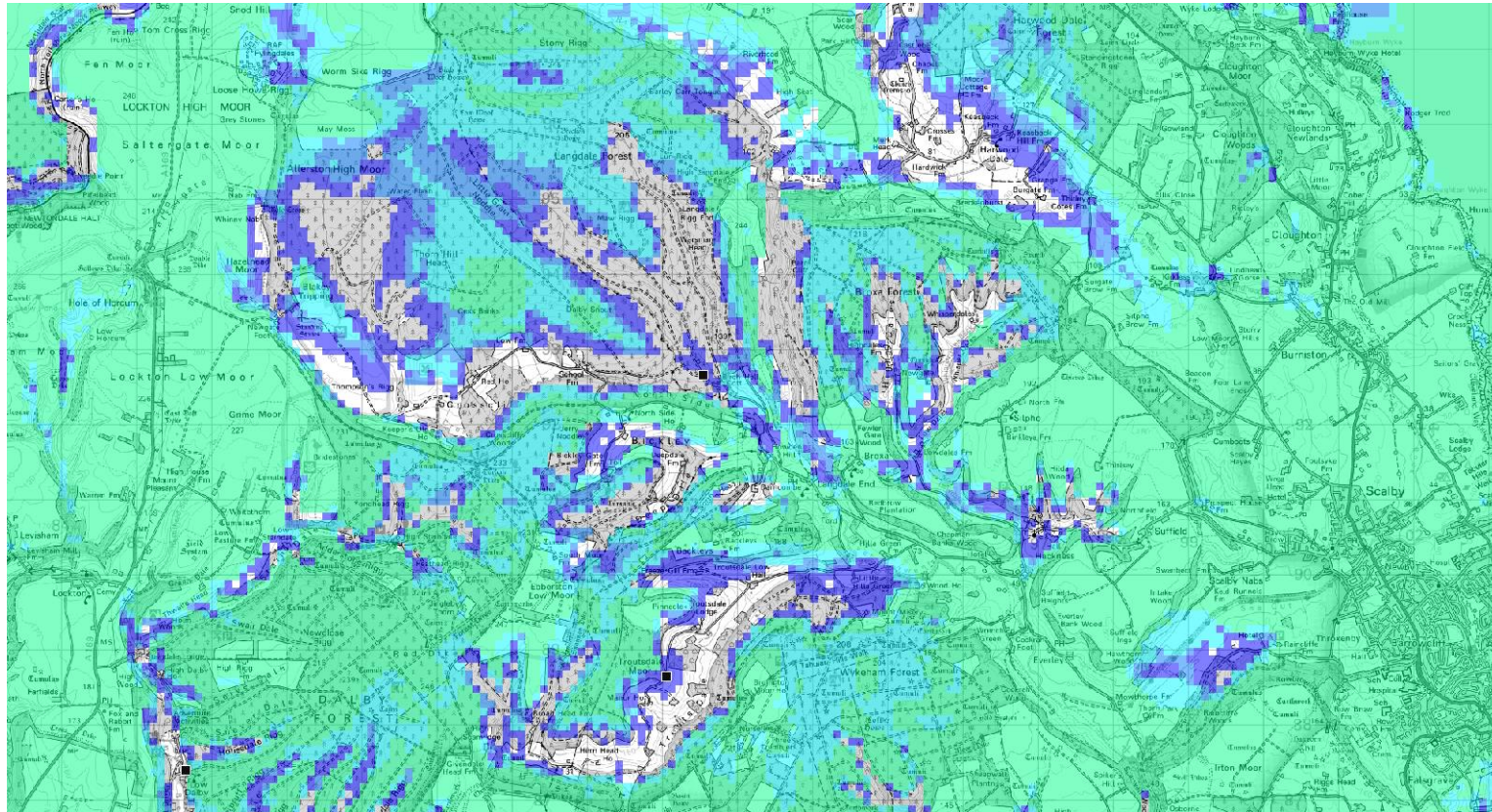
Major Road Exceptional Level – Allowable lower signal level for a short distance on a major road.

Minor Road Service Level: - Required continuous signal level along a minor road.

Minor Road Exceptional Level – Allowable lower signal level for a short distance on a minor road.



EAS1021 – Existing L800 ESMCN coverage including proposed EE ESN coverage

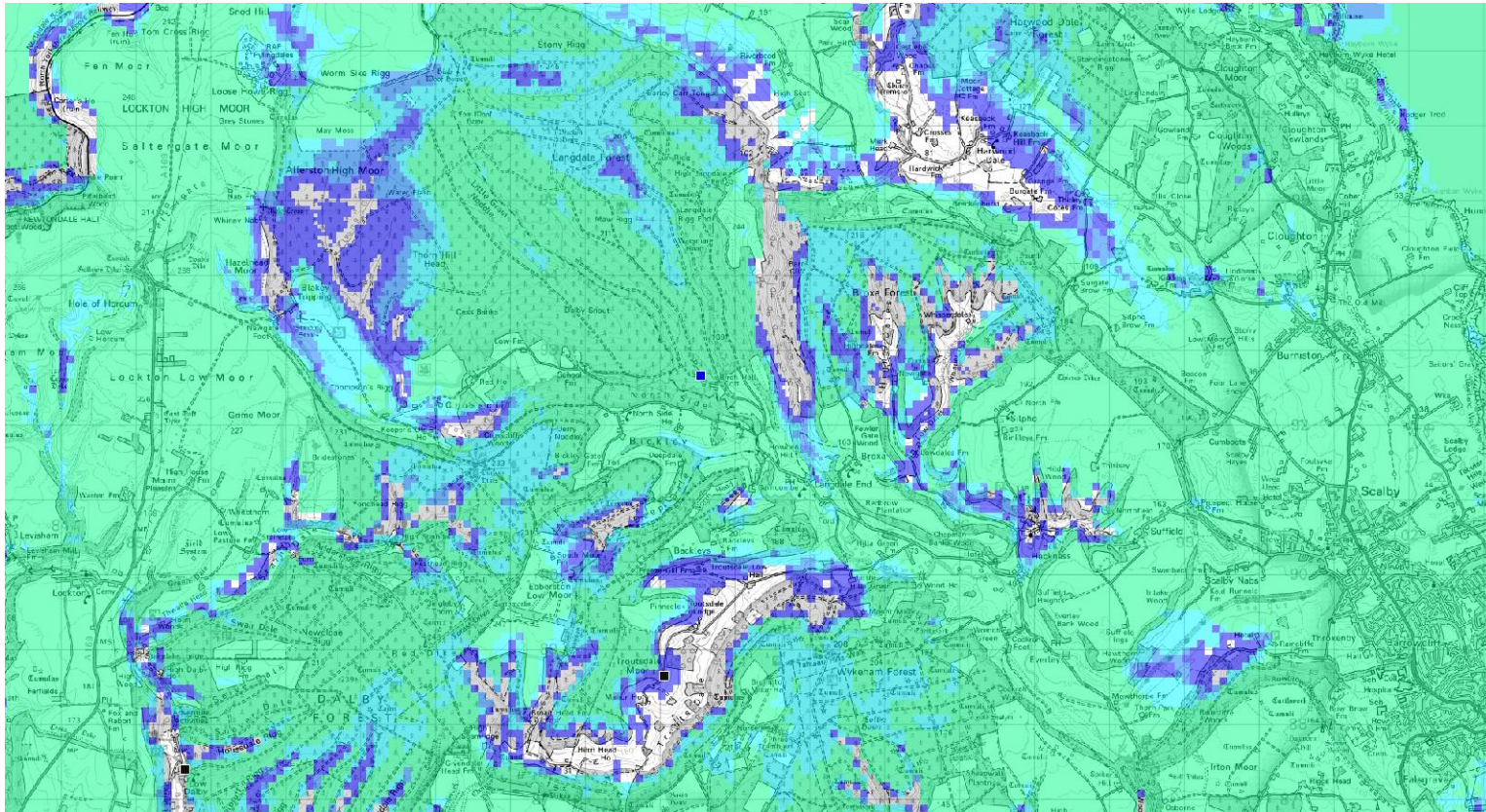


Note: This is predicted coverage using radio coverage planning software



Home Office

EAS1021 – Predicted L800 ESMCN coverage with new proposed site with antennas at 30m including EE ESN proposed coverage

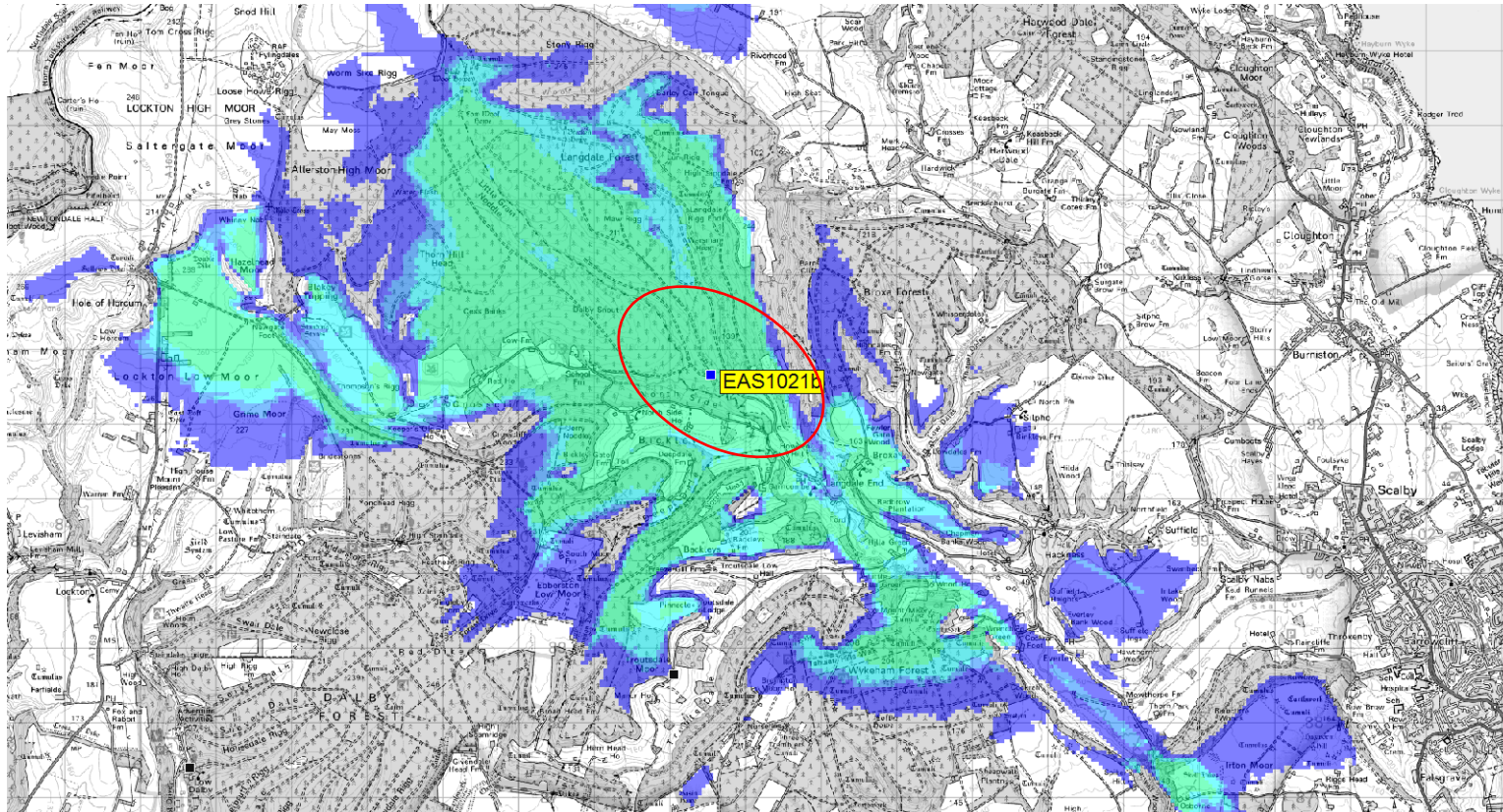


Note: This is predicted coverage using radio coverage planning software



Home Office

EAS1021 – Predicted L800 ESMCN coverage from new proposed site with antennas at 30m



Note: This is predicted coverage using radio coverage planning software



CFOA
Chief Fire Officers
Association



ASSOCIATION OF
AMBULANCE
CHIEF EXECUTIVES