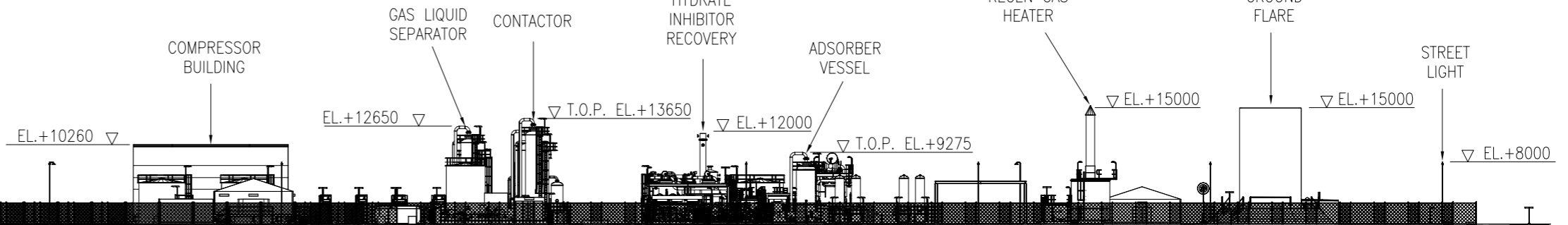
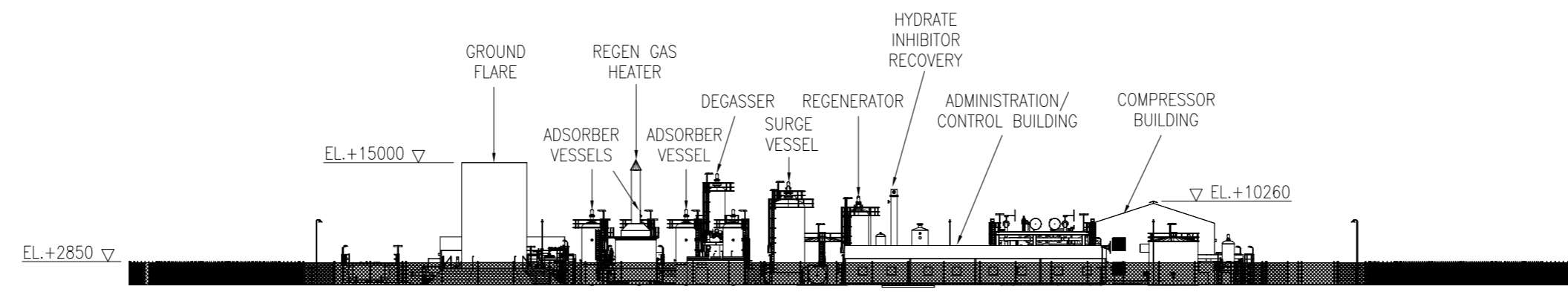


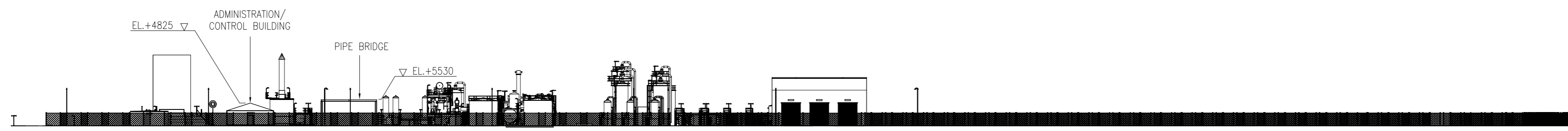
GRADE EL.+0 ▽



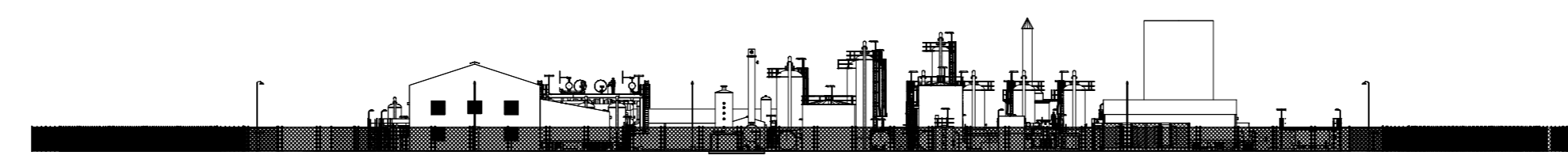
ELEVATION LOOKING NORTH
(SCALE 1:500)



ELEVATION LOOKING WEST
(SCALE 1:500)



ELEVATION LOOKING SOUTH
(SCALE 1:500)



ELEVATION LOOKING EAST
(SCALE 1:500)

NOTES:
1. REFER TO DRAWING 18761970 FOR GENERAL NOTES AND LEGEND.

REFERENCE DRAWINGS:
1. 18761970 - GENERAL NOTES/GLOSSARY SHEET.



REV.	DATE	DRN.	CHKD.	APPR.	CLIENT APPR.	DESCRIPTION
4	09/03/10	B.S.	N.R.	A.W.		RE-ISSUED FOR PLANNING APPLICATION
3	05/02/10	P.R.	N.R.	M.S.		REVISED FOR PLANNING APPLICATION
2	13/01/10	L.A.R.	N.R.	M.S.		ISSUED FOR CONCEPT DESIGN
1	18/12/09	P.R.	N.R.	M.S.		PRELIMINARY ISSUE FOR PLANNING
0	26/11/09	L.A.R.	N.R.			ISSUED FOR IDC

Date	Signature	Title
26/11/09	LAXTEN-RICE	DRYER
26/11/09	N. REID	DRYER
18/12/09	M. SPREADBURY	DRYER

		Drg. No. 18761901-2
Land & Marine Project Engineering Ltd.		Rev. 4
CAD Reference	18761901	Scale
		1:500 @ Size A1