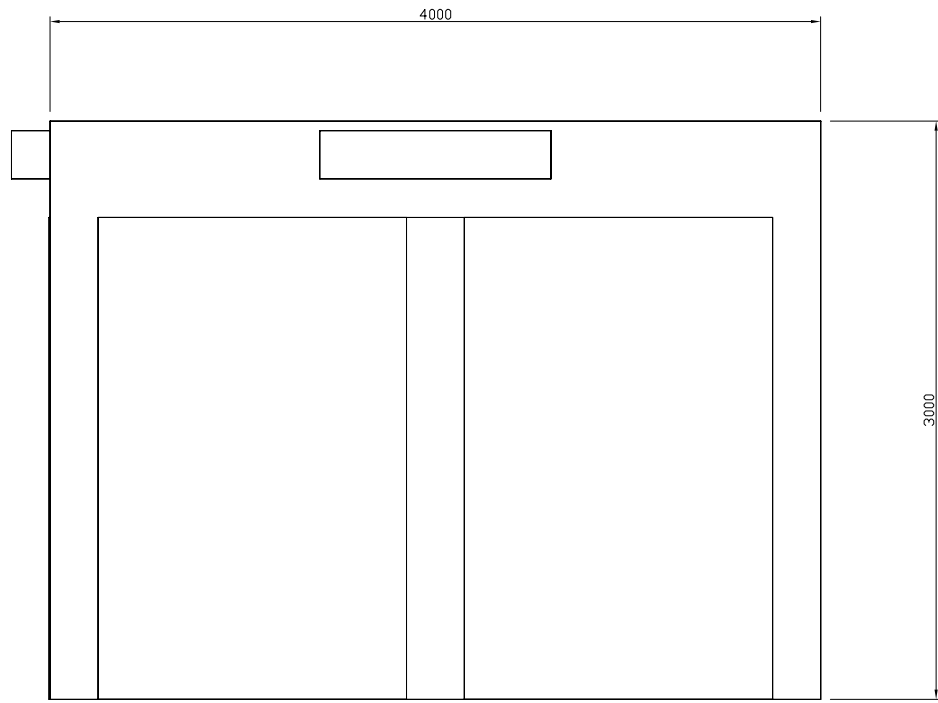
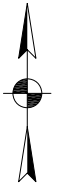
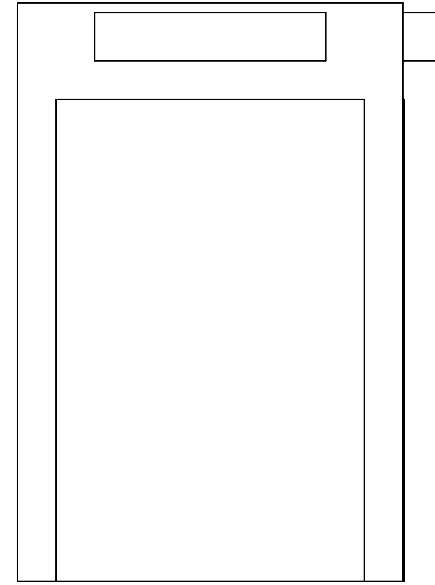


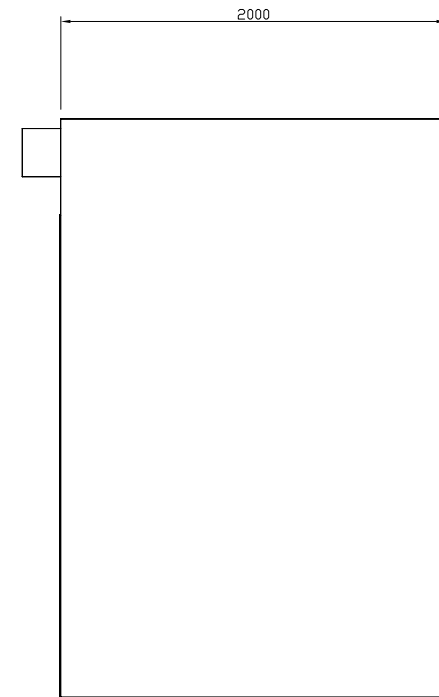
PLANT
NORTH



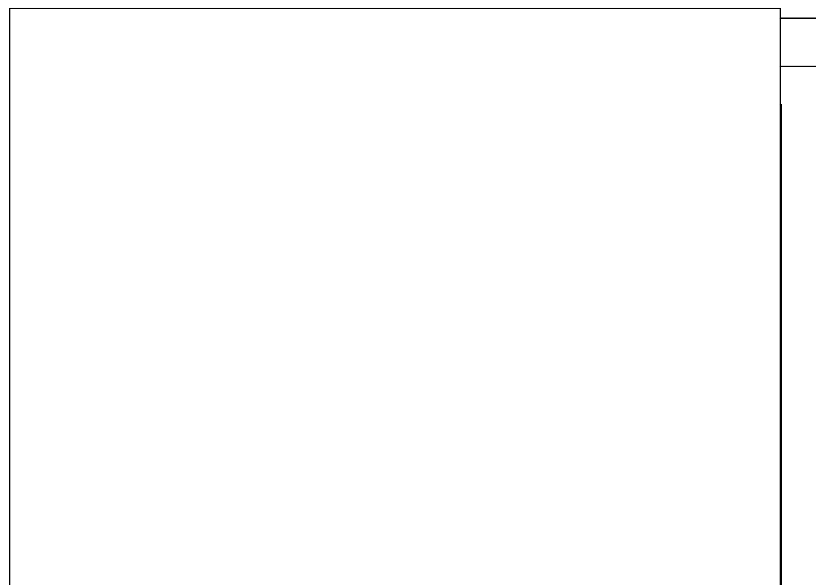
VIEW LOOKING NORTH
(SCALE 1:20)



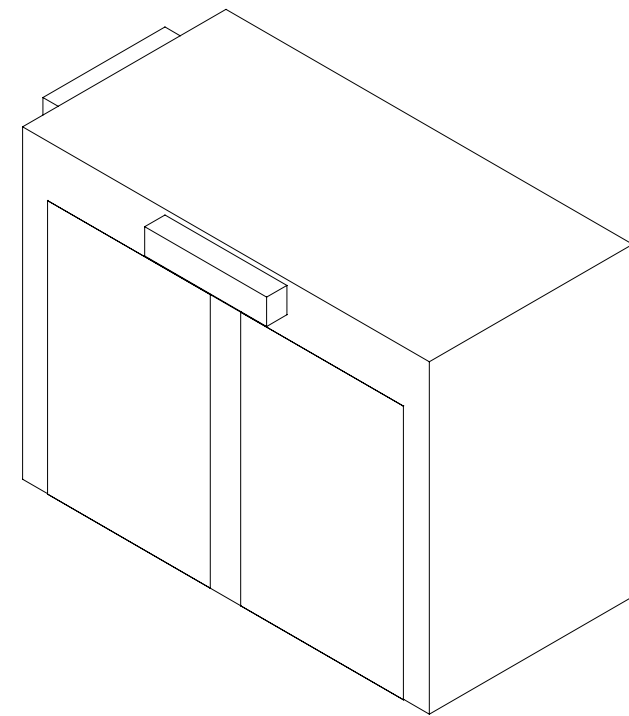
VIEW LOOKING EAST
(SCALE 1:20)



VIEW LOOKING WEST
(SCALE 1:20)



VIEW LOOKING SOUTH
(SCALE 1:20)

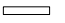
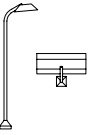


ISOMETRIC VIEW LOOKING NORTH-WEST

NOTES:

1. ALL DIMENSIONS ARE IN mm UNLESS NOTED OTHERWISE.
2. DRAWINGS ARE FOR CONCEPT/PLANNING PURPOSES ONLY.
3. PIPING, VALVES, ETC ARE NOT SHOWN FOR CLARITY.

KEY:

-  TWIN 58W FLUORESCENT LIGHT FITTINGS SUITABLE FOR ZONE 2. TO BE MOUNTED ON SIDES OF BUILDINGS.
-  TWIN 58W FLUORESCENT LIGHT FITTINGS SUITABLE FOR ZONE 2. TO BE MOUNTED ON A 2.2m POLE.



Drn.	15/01/10	LAXTEN-RICE	MOORLAND ENERGY LTD. RYEDALE GAS PROJECT CONCEPT/PLANNING ANALYSER HOUSE GA	2										
Chkd.	19/01/10	N. REID												
Appr.	19/01/10	M.SPREADBURY												
Client Appr.														
REV.	DATE	DRN.	CHKD.	APPR.	CLIENT APPR.	DESCRIPTION	CAD Reference	18761941 REV.2	Scale	1:20	Size	A1	Rev.	2
2	12/02/10	L.A.R.	N.R.	M.S.		REVISED FOR PLANNING APPLICATION								
1	19/01/10	L.A.R.	N.R.	M.S.		ISSUED FOR CONCEPT DESIGN								
0	15/01/10	L.A.R.	N.R.			ISSUED FOR IDC								

Protech
Land & Marine Project Engineering Ltd.

Drg. No. **18761941**
Sheet 1 of 1