

ADDITIONAL AMENDMENTS

- Amended layout of buildings/outside areas
- Additional background information
- Amended design
- Revised access arrangements
- Change of description of proposed development - as indicated on the previous page
- Change in site boundaries
- Other (as specified below)

Mike Swinglehurst, Architect.

The Stables, Wigman Hall, Crockey Hill, York YO19 4SQ.

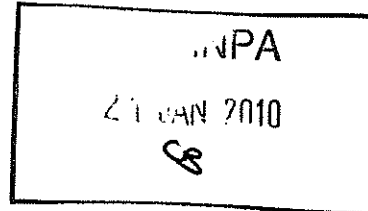
Tel. 01904 448007. Fax. 01904 449007.

E-mail. stablesatwigman@btinternet.com

Mrs Ailsa Teasdale
North York Moors N P A
The Old Vicarage
Bondgate
Helmsley
York
YO62 5BP

19th January 2010

Dear Mrs Teasdale



Two storey dwelling at High Farm, Newholm. 2009/0884/RM.

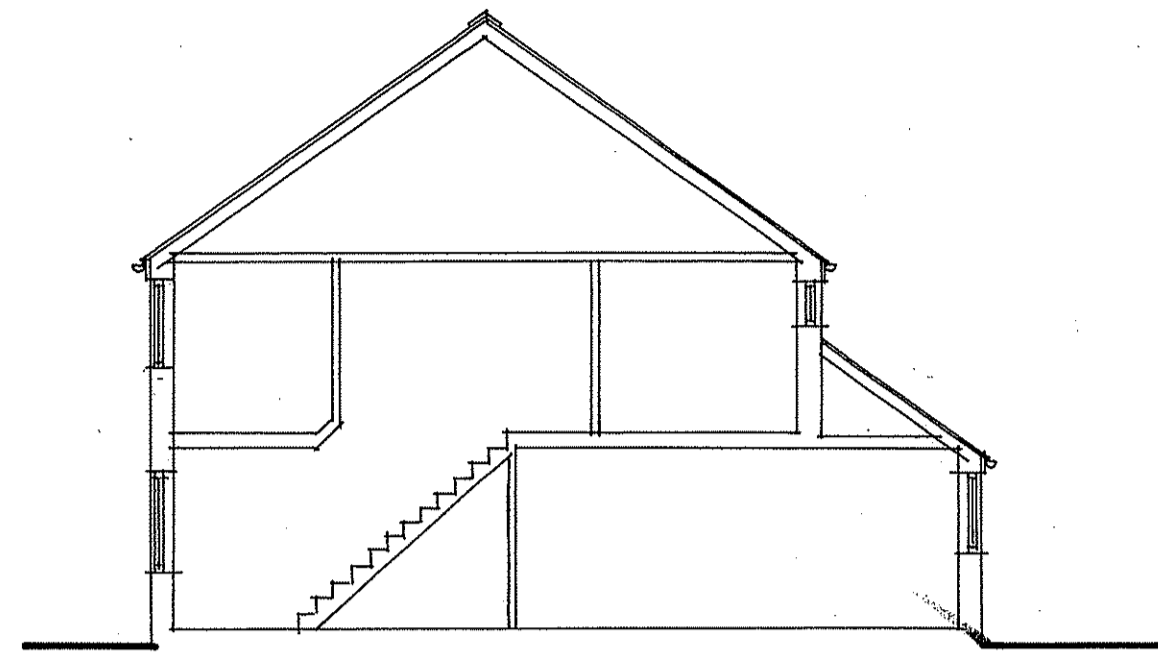
Further to your letter dated 14 January please find enclosed four copies of the scheme drawings revised to show the elevational changes you requested.

We hope this information is now sufficient for discharge of condition to be granted and I look forward to hearing from you in this connection.

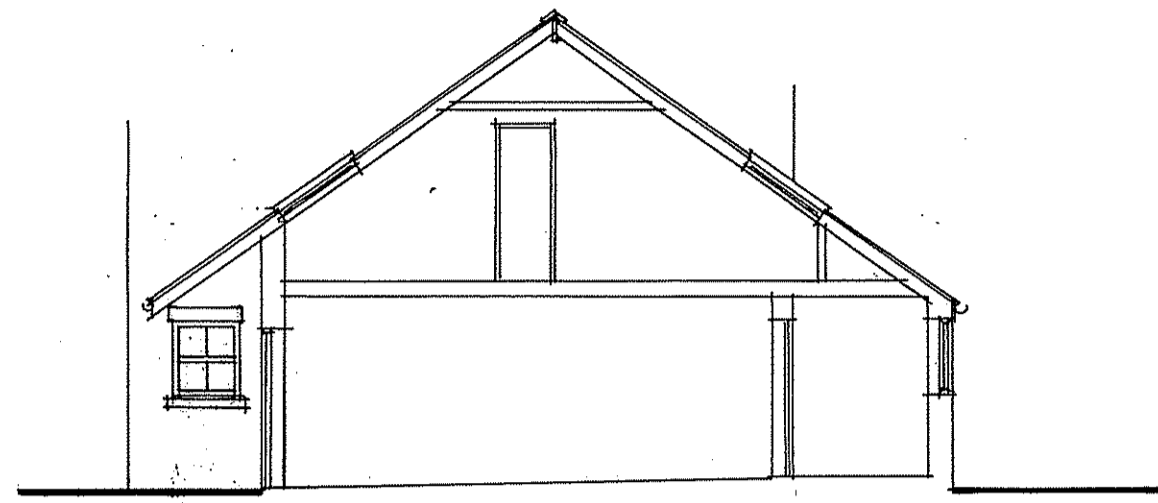
Yours sincerely,



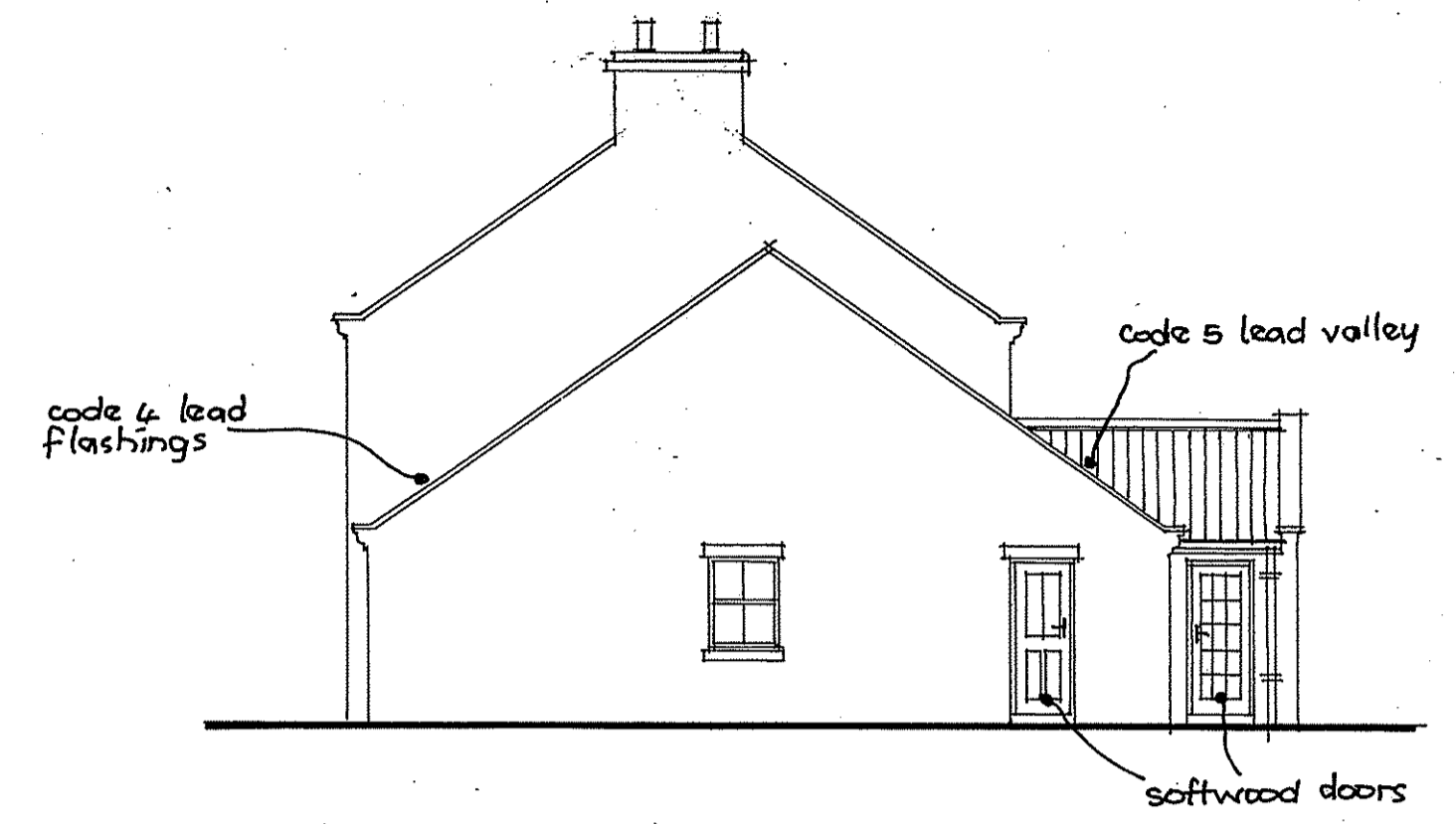
Mike Swinglehurst.



SECTION A-A



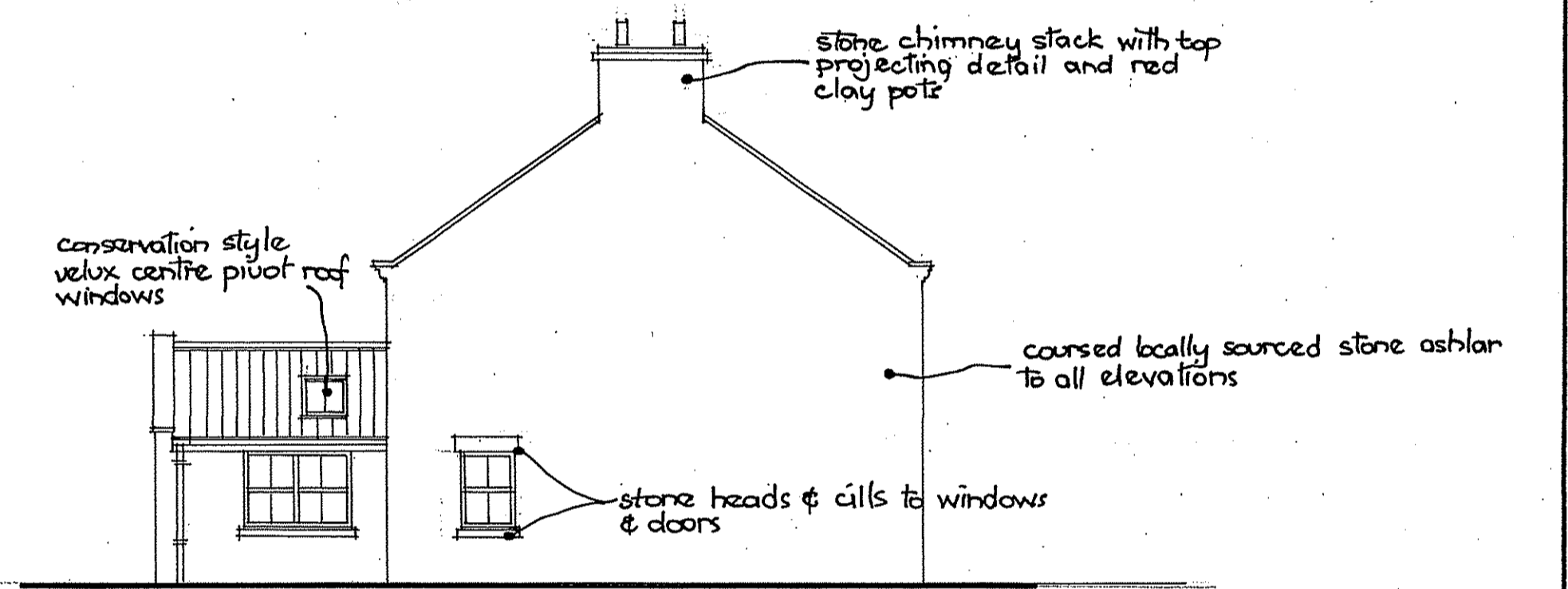
SECTION B-B



NORTH ELEVATION



WEST ELEVATION



SOUTH ELEVATION



EAST ELEVATION

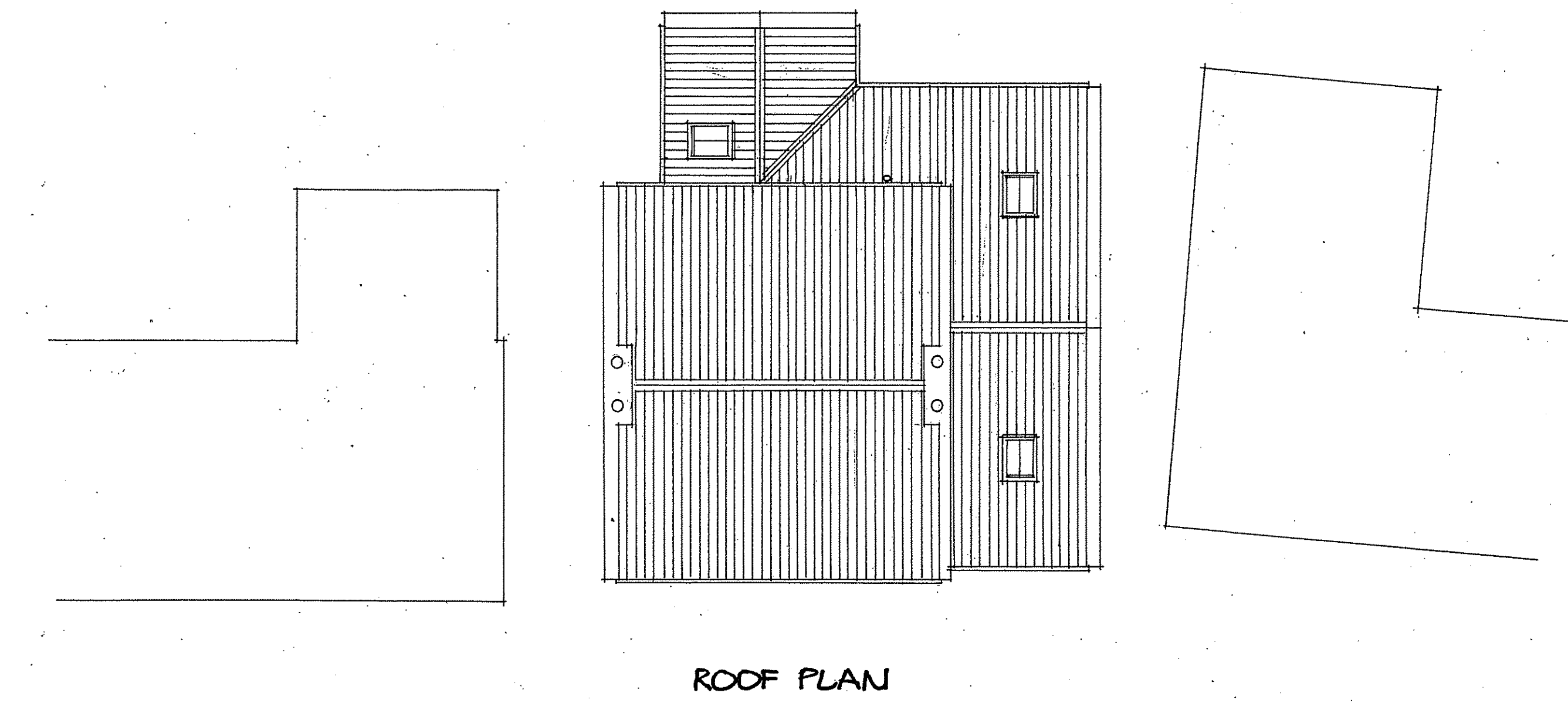
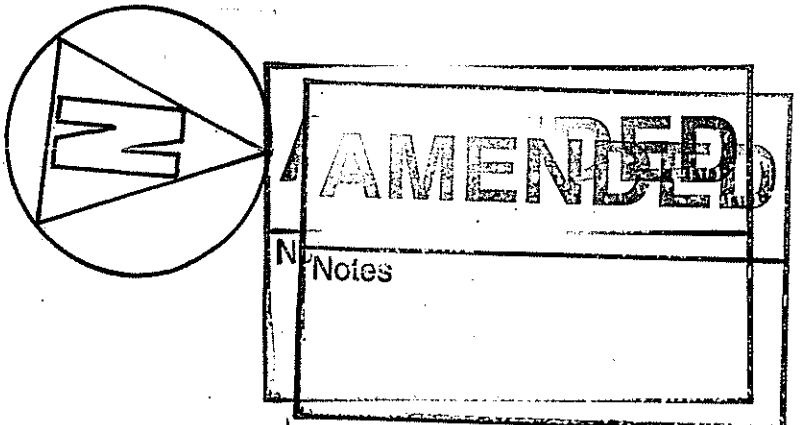
1.1.2010
21 JAN 2010

AMENDED
Notes

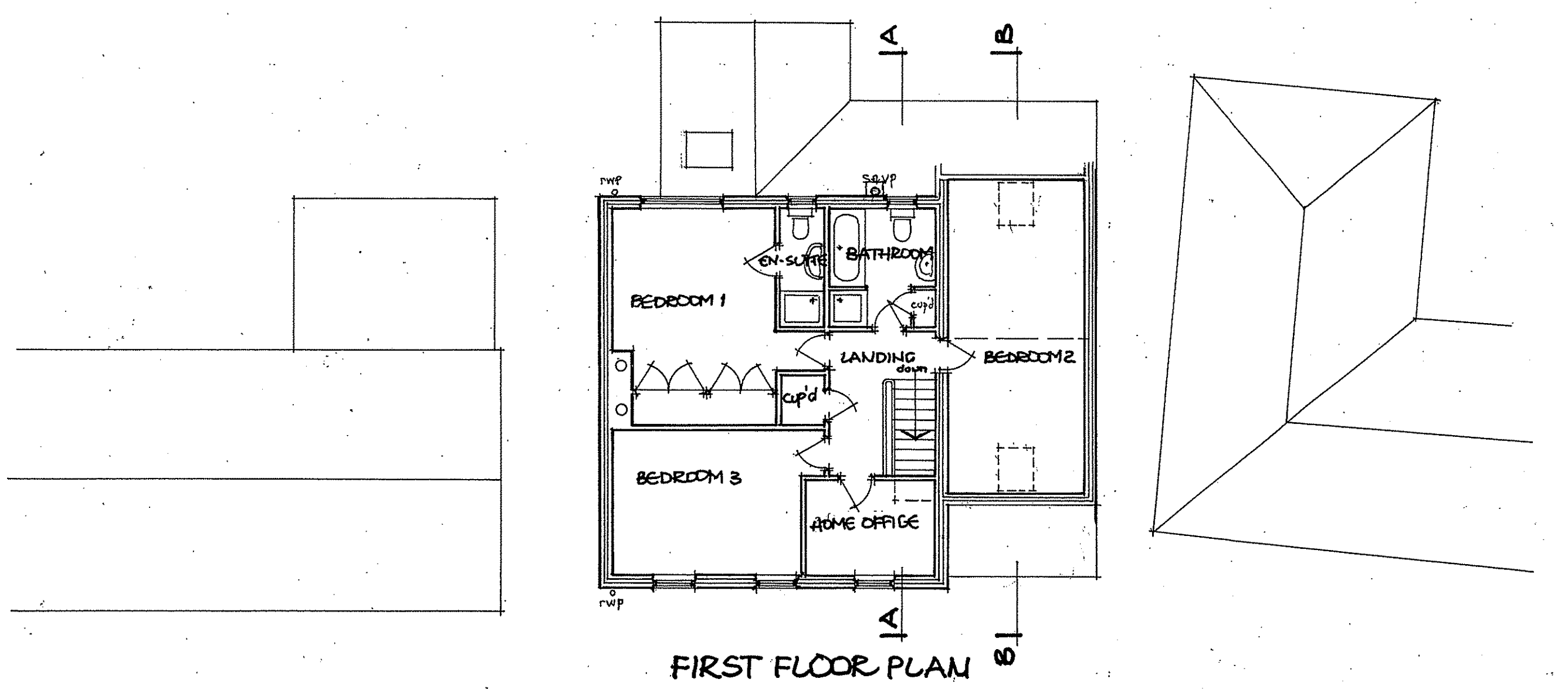
Revision A. Jan 10. Elevational changes made.

New dwelling at High Farm, Newholm,
for E & M Ambler.
Scheme 2 sections & elevations.
Mike Swinglehurst, Architect. The Stables, Wigman Hall, Crockey Hill, York YO19 4SQ.
Tel. 01904 448007. Fax. 01904 449007. E-mail. stables@wigman@btinternet.com.

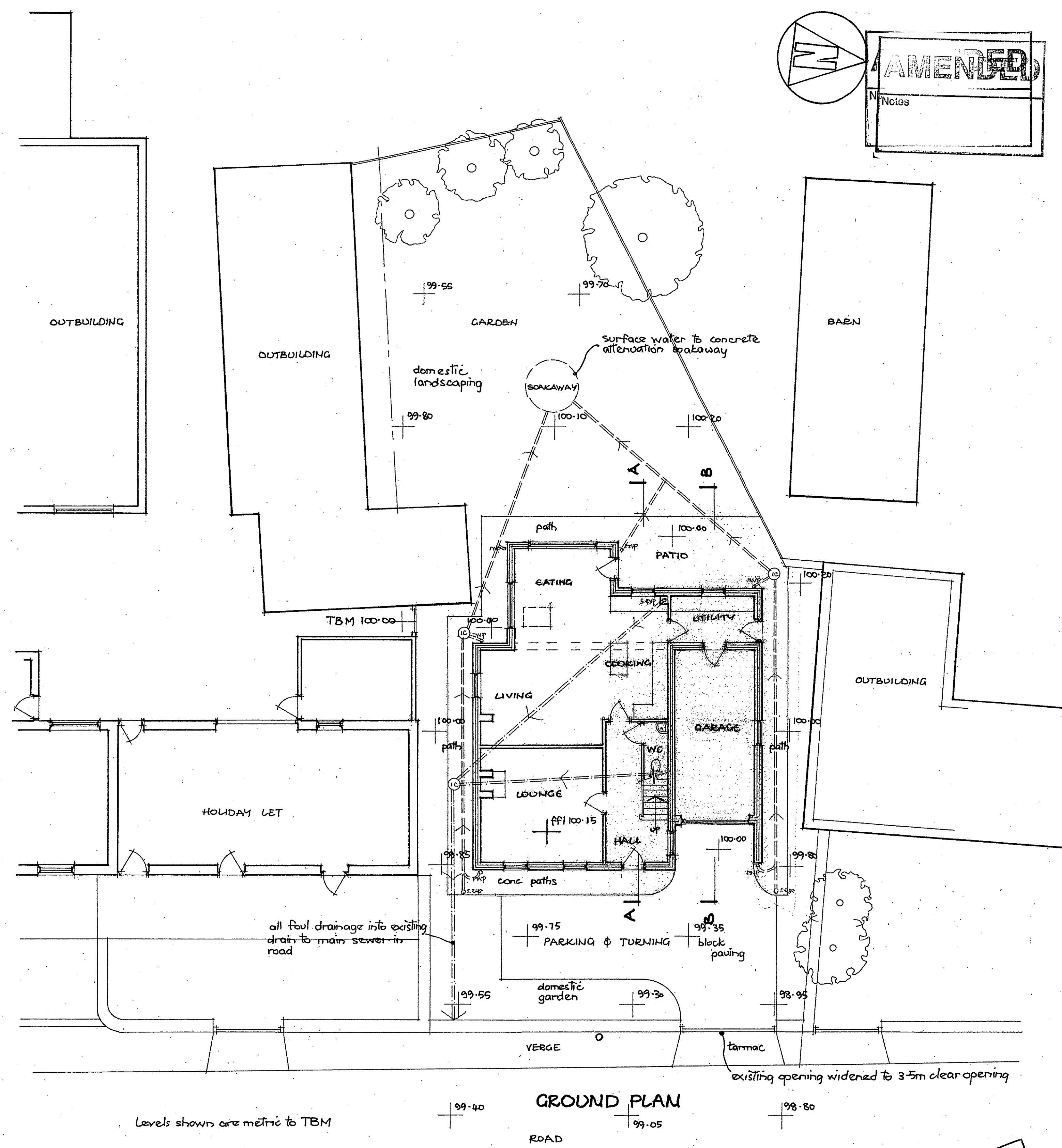
Dwg. 9102.05.A
Scale 1:100.



ROOF PLAN



FIRST FLOOR PLAN



GROUND PLAN

Levels shown are metric to TBM

NYMMPA
21 JAN 2010

Revision A. Nov 09. Additional notes added.
Revision B. Jan 10. Elevational changes made.

New dwelling at High Farm, Newholm,
for E & M Ambler.
Scheme 2 plans.
Mike Swinglehurst, Architect. The Stables, Wigman Hall, Crockey Hill, York YO19 4SQ.
Tel. 01904 448007. Fax. 01904 449007. E-mail. stablesatwigman@btinternet.com

Drg. 9102.04. B.
Scale 1:100.