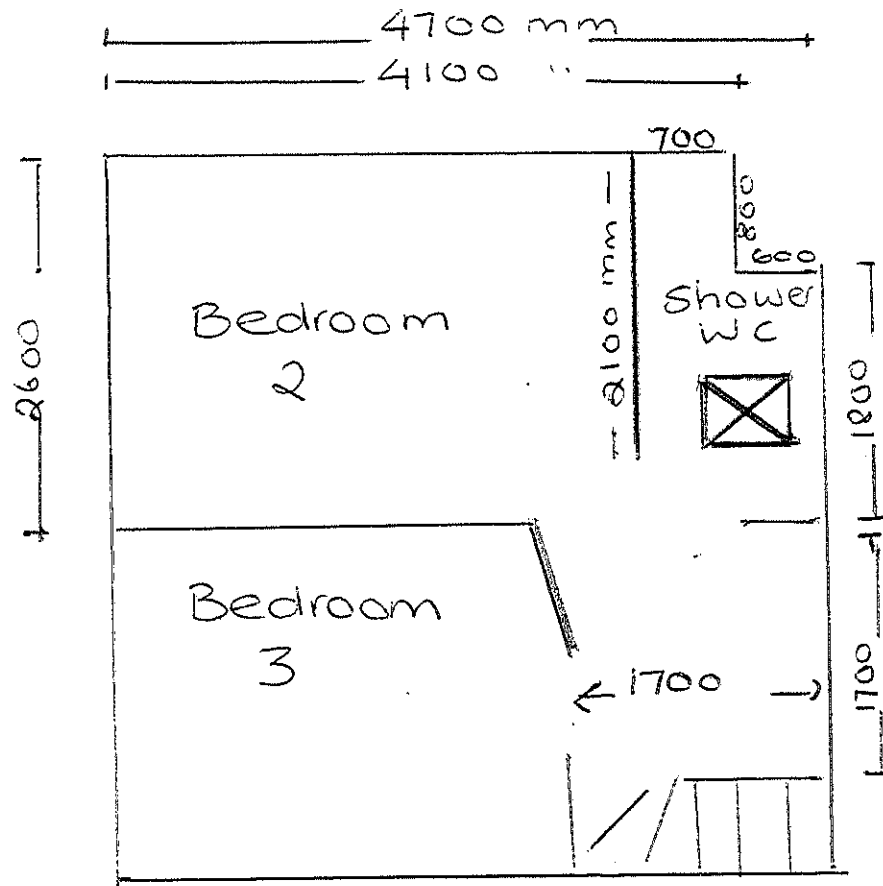


/// - restricted Height.

Existing Layout of
3rd floor

NYM/NPA
24 NOV 2010



Scale 1:50

NYMANPA
 24 NOV 2010

Proposed layout
of 3rd floor.

- 1) all structural alterations outlined in red.
- 2) new door openings have been positioned to avoid removing any original features

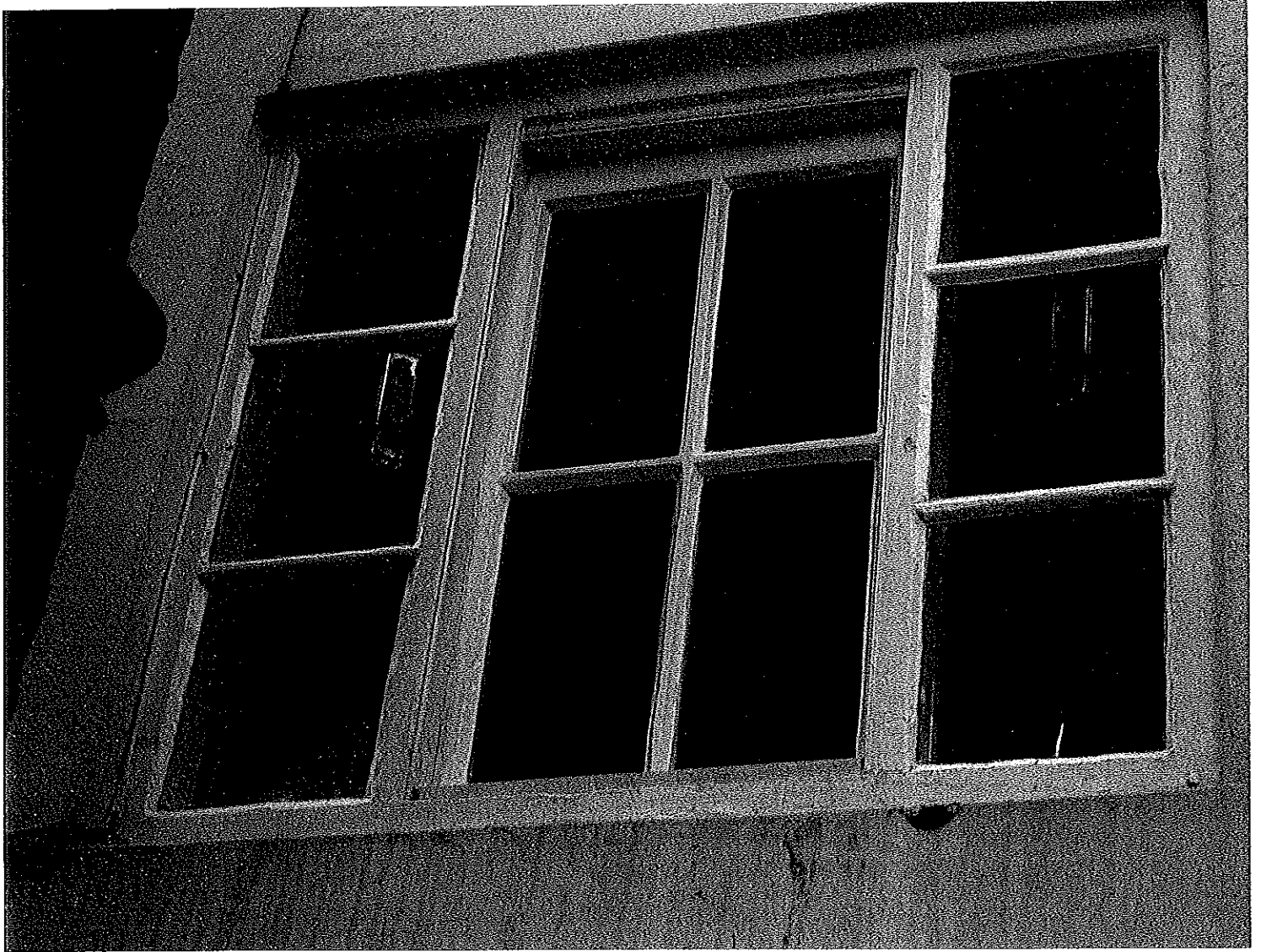
NYM / 2010 / 0952 / LB



1. Existing window facing New Rd
(apology for picture quality)

NYM
24 NOV 2010

2



Proposed window design for ground floor kitchen window.

Photo is of neighbouring property.

NYM/NDA
24 NOV 2010

3

NYM / 2010 / 0 9 5 2 / L B

Position of conservation roof window



NYM
24 NOV 2010

NYM / 2010 / 0952 / LB



Request a quotation today for your Rooflight project...

Search the site

Search

- [Home](#)
- [Product Range](#)
- [Professionals](#)
- [Home Owners](#)
- [Media & Case Studies](#)
- [Brochures](#)
- [Tools and Resources](#)
- [About](#)
- [Contact](#)

You are here: [Home](#) / [Product Range](#) / [the Conservation Rooflight](#) / [Why Specify Conservation?](#)

Product Range

- [Products by Roof Type](#)
- [Products by Application](#)
- [the neo Frameless Rooflight](#)
- [the Conservation Rooflight](#)
- [Why Specify Conservation?](#)
- [Sizes and Prices](#)
- [Ironmongery](#)
- [Blinds](#)
- [Conservation Rooflight Gallery](#)
- [the Studio Range](#)
- [Special Rooflights](#)
- [the Pyramid Rooflight](#)
- [the Plateau Rooflight](#)
- [the Added Security Range](#)
- [the Lantern Rooflight](#)
- [the Polyedge Rooflight](#)
- [Flashing Kit](#)
- [Vertical Steel Windows](#)

Why Specify the Conservation Rooflight?

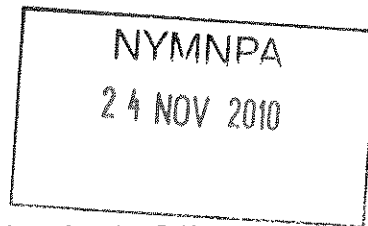
Traditional appearance and approval by Planning Authorities

- Faithful reproduction of Victorian cast iron rooflight
- Ultra-low profile, fine lines of steel, and genuine glazing bar
- Complies with planning requirements for listed buildings and conservation areas
- Size for any application and a specials design service
- Favoured by the National Trust and English Heritage
- Silicone fronting replicating traditional putty
- Stepped glazing detail to give appearance of single glazing
- the Rooflight Company offers the widest range of sizes available with 17 top-hinged and 2 side-hinged sizes



Projects include:

- The Natural History Museum, London
- Kensington Palace, London
- The National Library for Scotland
- Pendennis Castle, Cornwall (English Heritage)
- Thousands of Listed buildings and dwellings



High standards of performance

- Standard double glazed unit exceeds current building regulation requirements on Part L
- High performance thermal lining (the patented Thermoliner®) drains away any condensation that can form
- Exceeds weather tightness test BS6375: Part 1:1989 up to Hurricane Force 12
- High degree of air tightness
- Passive ventilation conforms to current building regulations

Glazing specification

The standard glazing specification is 4mm "K" toughened inner, 4mm toughened outer and 16mm argon-filled gap manufactured. This provides an average installed U Value of 1.35W/m2 K. If a further improved U Value is required, e.g. 1.1W/m2 K, this is readily available in addition to 11 specifications including Geoglan Wire Cast and Pilkington Activ™ self-cleaning glass.

Long life, low maintenance

- Robust 3 mm steel design with protective layer and polyester powder coating
- Guarantee on rooflight frame of 12 years subject to location and adherence to maintenance guidelines
- Can be cleaned from the inside with aid of cleaning tool

Versatile and easy to install

- Suitable for any roof construction
- 19 sizes and Specials available, there is a solution for every application
- No special measures required to obtain flushness in the roof
- Full technical help and support available

If you are choosing rooflights for a property in an industrial or maritime area, or an area which is subject to a potentially corrosive or polluted environment, call our Customer Services team and ask about the different material specifications we offer to suit your specific needs.

For further information

[Download our Brochure](#)

[NEW! The Virtual Design Tool Click here](#)

For prices and lead times

[Request a Quotation for the Conservation Rooflight](#)

Toolbox

- [Technical Downloads & Drawings](#)
- [Building Regulations](#)
- [Glossary of Terms](#)
- [Case Study Centre](#)

A new RIBA Approved CPD seminar from The Rooflight Company.

[Find out more...](#)





4

NYM / 2010 / 0952 / 1.B

proposed
outlet for
soil pipe.

NYMNP
24 NOV 2010

5

NYM / 2010 / 0952 / LB

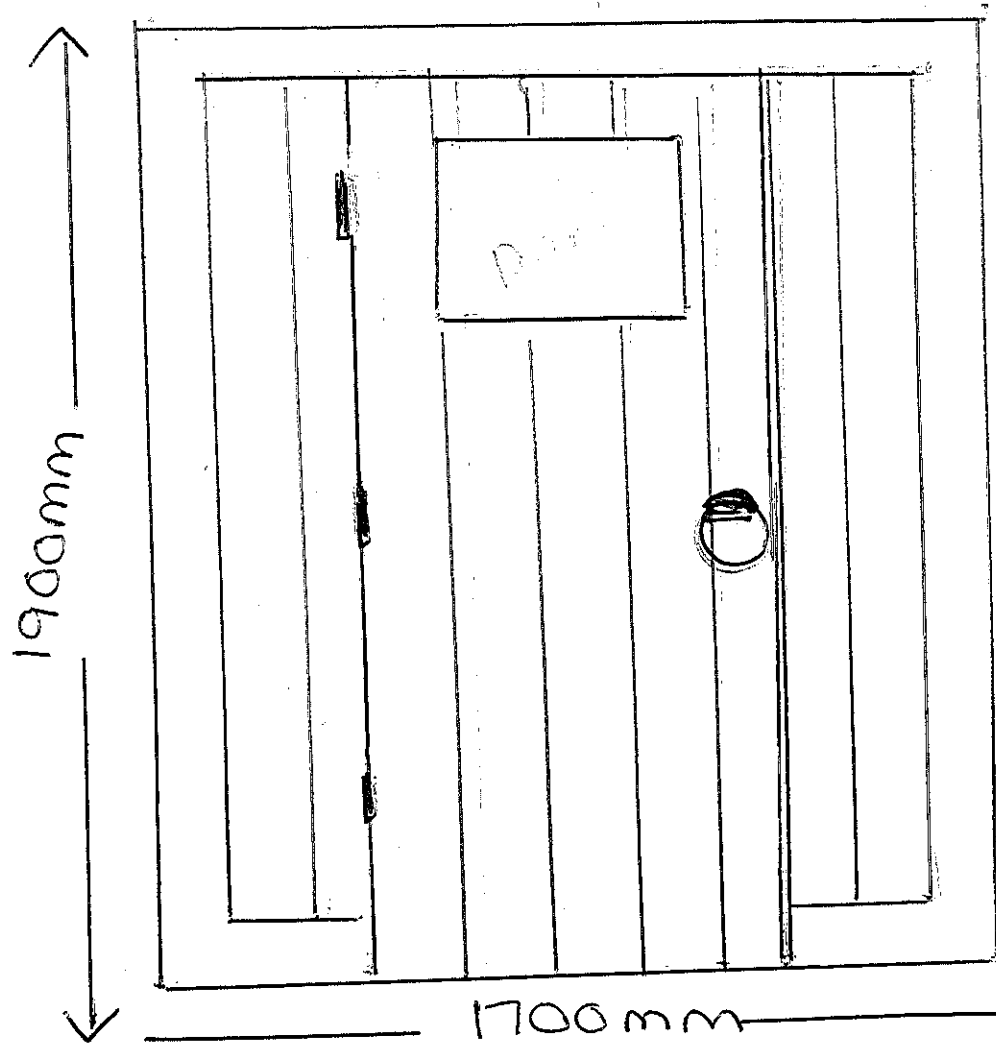


Porch area below raised veranda,
facing new road

Dimensions:- Width 1700 mm
Height 1900 mm

NYMNPA
24 NOV 2010

Proposed Doors/gate for porch area. Option 1.



alternative option would be to replace door with stable door in same style

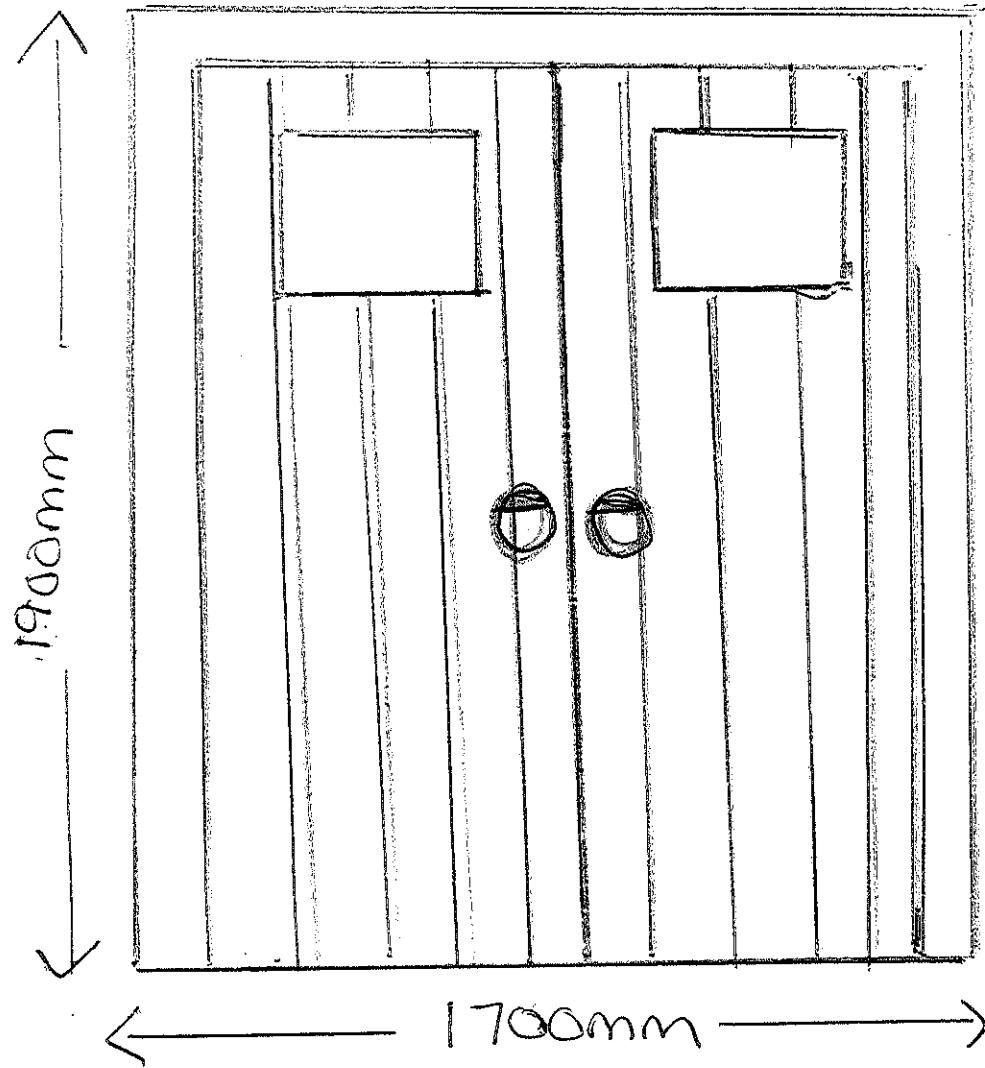
NB This is a rough sketch and has not been drawn to scale.

NYMANITA
24 NOV 2010

NYM / 2010 / 0 9 5 2 / LB

Proposed doors/gate for porch area. Option 2.

Preferred option



NB. This is a rough sketch and has not been drawn to scale.

NYM/NPA
24 NOV 2010

NYM / 2010 / 0952 / LB

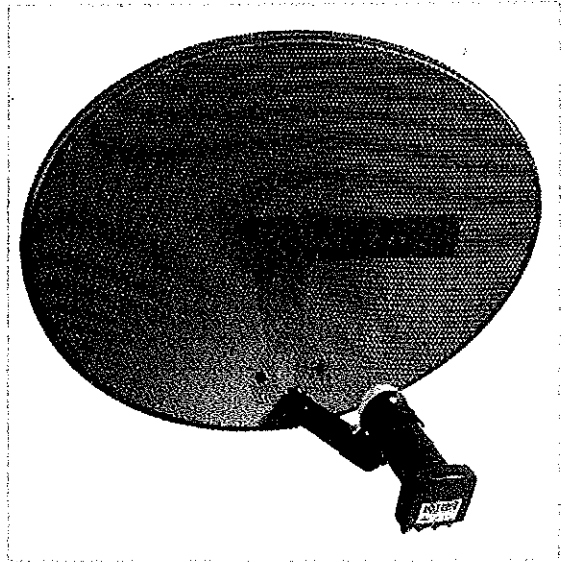


Sky-Freesat New Mk4 Zone 1 Satellite Dish with Quad LNB

Price: £25.95
 Availability: In Stock
 Model: Sky Zone 1 QUAD
 Average Rating: Not Rated

Qty:

[Add to Cart](#)



[Click to enlarge](#)

[Bookmark](#) | [Print page](#)

NYMNPA
 20 JAN 2011

Description	Additional Images (0)	Reviews (0)	Related Products (8)
-----------------------------	---------------------------------------	-----------------------------	--------------------------------------

Sky/Freesat New Zone 1 43cm MeshSatellite Dish kit with Latest Quad LNB, wall bracket.

Ideal for Sky+ or Freesat self installation.

- New Mk4 Raven Minidish for Sky or Freesat
- Latest new compact Quad LNB for 4 simultaneous channels of satellite reception - HD ready
- Weather covering integrated into the LNB - pulls down over the cable ends increasing reliability
- Wall bolts and all brackets for wall mounting included with instructions, easy self-install
- Matched components for guaranteed performance
- Ideal for Sky+ or Freesat+ to watch one channel while recording another or for adding more receivers

Tags: 43CM, DISH, LNB, MESH, QUAD, Sky, Zone1,

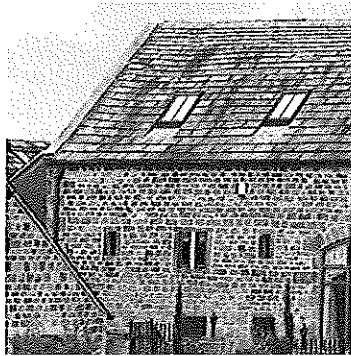
[Home](#) | [Account](#) | [Shopping Cart](#) | [Checkout](#) | [Contact Us](#) | [Site Map](#)

© World-Of-Satellite.Co.Uk 2011 - www.world-of-satellite.co.uk

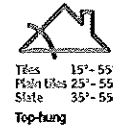
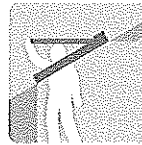
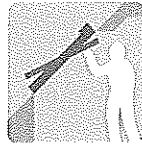
2,006,317
 0/10
WWW.TOPSAT.ORG
satreals.tv
 TOPLIST



Conservation roof window system



Centre-pivot and top-hung windows.



The VELUX conservation roof window system offers all the superior technical features of a VELUX roof window but in a traditional conservation style. It allows you to make the area under the roof truly habitable – not previously possible with a rooflight. The system blends in perfectly in sensitive conservation areas with its:

- mullion (central glazing bar)
- recessed installation (slate roof only)
- external black metal work.

Application

Centre-pivot

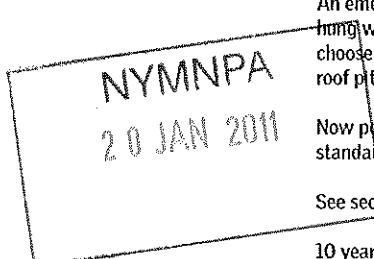
Consisting of a GGL centre-pivot roof window with vertical glazing bar and associated flashing. Three different versions are available depending on the roofing material:

- for slate up to a maximum thickness of 8mm with roof pitches of 35°-90°.
- for profiled roofing material up to a maximum of 120mm in profile with roof pitches of 15°-90°.
- for plain tiles up to 15mm thick with roof pitches of 25°-90°.

Features

Top-hung

An emergency escape system is also available which includes a GHL top-hung window with vertical glazing bar and associated flashing. Again choose from the variants listed above depending on roofing material and roof pitch for GHL.



Now possible to purchase separate conservation glazing bars for standard VELUX windows to create a traditional style appearance.

Options

See section 3.01.00 for GGL and section 3.02.04 for GHL.

Operation

10 year VELUX guarantee.

Guarantee

Conservation roof window system can be combined with:

Combinations

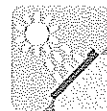
Flashings for

- Single installation
- Twin installation – tile only
- Combi installation – slate/tile only



Interior sunscreening

- Blackout blinds
- Roller blinds
- Pleated blinds
- Venetian blinds



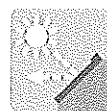
Controls

- Rod
- Electrical



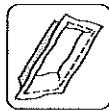
Exterior sunscreening

- Awning blind
- Roller shutter



Installation products

- Insulation collar
- Underfelt collar
- Vapour barrier



Additional accessories

- Insect screen



Interior variants:

Pine with triple coat finish or white paint finish

Variants

Cladding variants:

Black aluminium, titanium zinc, copper or other cladding types and colours

Pane variants:

(--59) Toughened outer pane

For more pane variants see section 8.

Section 3.0700

Products ▶ Roof windows ▶ Types ▶ Conservation



Conservation Roof Windows (GGL) (GHL)

All the technically superior features of a VELUX Roof Window in a traditional black conservation style.

- Available in either Centre-Pivot or Top-Hung opening.
- Made of high-quality natural pine with clear lacquer finish.
- Black external profiles and glazing bar.
- Recessed installation for slate roofs.
- Rotates 180° and locks in place for easy cleaning of outer pane.
- Insulation collar and vapour barrier recommended (insulation collar cannot be used with EDN recessed Flashing).
- 10 year VELUX guarantee.



Slate 35°-90°
Plain tiles 25°-90°
Tiles 15°-90°

Centre-Pivot



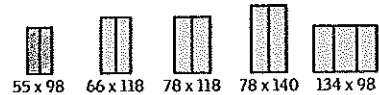
Slate 35°-55°
Plain tiles 25°-55°
Tiles 15°-55°

Top-Hung

• For roof pitches from 55°-75°, please specify special springs when ordering.

▲ Top-Hung can be used for emergency escape when required.

Other sizes of conservation roof windows are available.



External frame size (nominal w x h) cm

Conservation Roof Windows		G04	F06	M06	M08	U04
Packages include: GGL Centre-Pivot or GHL Top-Hung Roof Window with toughened outer pane, glazing bar and suitable flashings.						
Centre-Pivot Roof Windows, pine. U-value 1.4 W/m²K						
GGL SD5N1	GGL 3059 Roof Window + EDN recessed Flashing for slate up to 8mm thick (min 35° roof pitch)	£418.30	£472.35	£547.55	£581.63	£658.00
GGL SD5P1	GGL 3059 Roof Window + EDP Flashing for plain tiles up to 15mm thick (min 25° roof pitch)	£418.30	£472.35	£547.55	£581.63	£658.00
GGL SD5W1	GGL 3059 Roof Window + EDW Flashing for tiles up to 120mm in profile (min 15° roof pitch)	£418.30	£472.35	£547.55	£581.63	£658.00
Top-Hung Roof Windows, pine. Suitable for emergency escape. U-value 1.4 W/m²K						
GHL SD5N1	GHL 3059 Roof Window (opens to 30°) + EDN recessed Flashing for slate up to 8mm thick (min 35° roof pitch)					£663.88A
GHL SD5P1	GHL 3059 Roof Window (opens to 30°) + EDP Flashing for plain tiles up to 15mm thick (min 25° roof pitch)					£663.88A
GHL SD5W1	GHL 3059 Roof Window (opens to 30°) + EDW Flashing for tiles up to 120mm in profile (min 15° roof pitch)					£663.88A

Prices valid from January 2010. All prices include VAT.

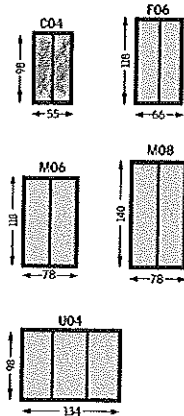
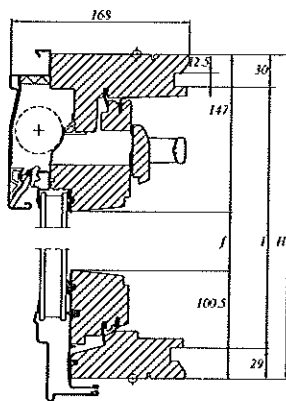
NYMNPA
20 JAN 2011

Technical data – Conservation roof window system

Measurements (mm)

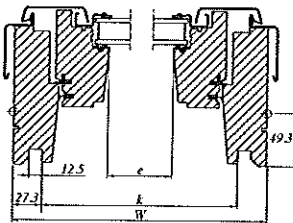
Size	Exterior frame	Visible glass	Lining rebate
	W x H	e x f	k x l
C04	550 x 978	373 x 730	495 x 919
F06	660 x 1178	483 x 930	605 x 1119
M06	780 x 1178	603 x 930	725 x 1119
M08	780 x 1398	603 x 1150	725 x 1339
U04	1340 x 978	1163 x 730	1285 x 919

Cross-section/measurements (mm)



Sizes (cm)

VELUX GB/Ireland product programme.
Other sizes/types available to order.



NYM NPA
20 JAN 2011

Technical data

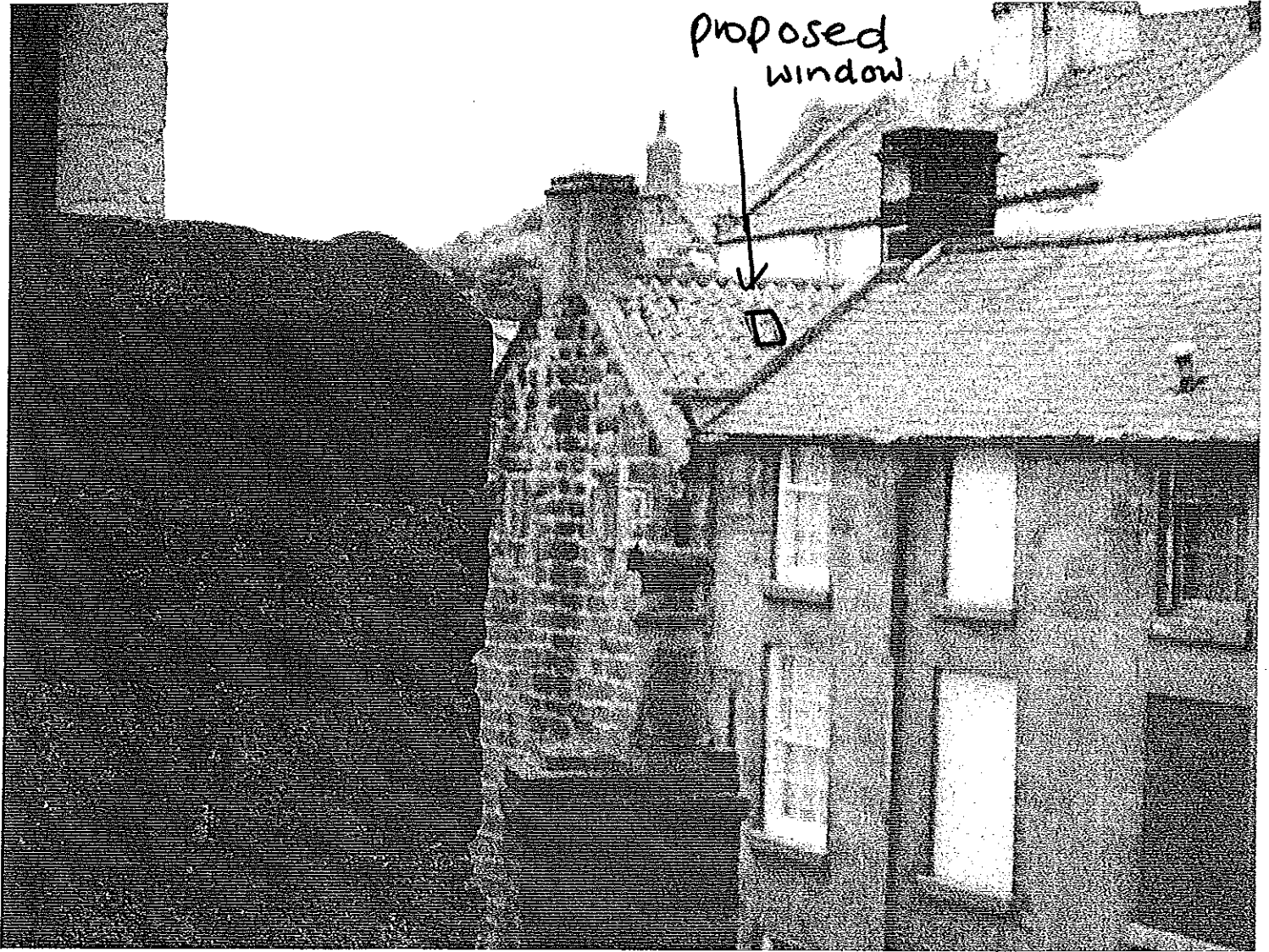
	Size	GGL					GHL	
		C04	F06	M06	M08	U04	Size	M08
Ventilation flap – free area [10 ³ mm ²]		2.8	3.5	4.3	4.3	8.1		4.3
Ventilation flap – equivalent area [10 ³ mm ²]*		2.6	3.1	3.7	3.7	6.6		3.7
Ventilation – open window [m ²]		0.33	0.53	0.64	0.79	0.94		0.84
Effective daylight area [m ²]		0.27	0.45	0.56	0.69	0.85		0.69

*Measured to EN 13141-1

Pane variant	-59	EN/ISO Standard
Thermal transmittance, U _a [W/m ² K]	14	EN ISO 12567-2
Sound insulation, R _w [dB]	32	EN ISO 140-3/EN ISO 717-1
Air permeability	Class 3	EN 12207
Light transmittance, τ _v	0.77	EN 410
Total solar energy transmittance, g	0.60	EN 410

Section 3.0701

Products ▶ Roof windows ▶ Types ▶ Conservation



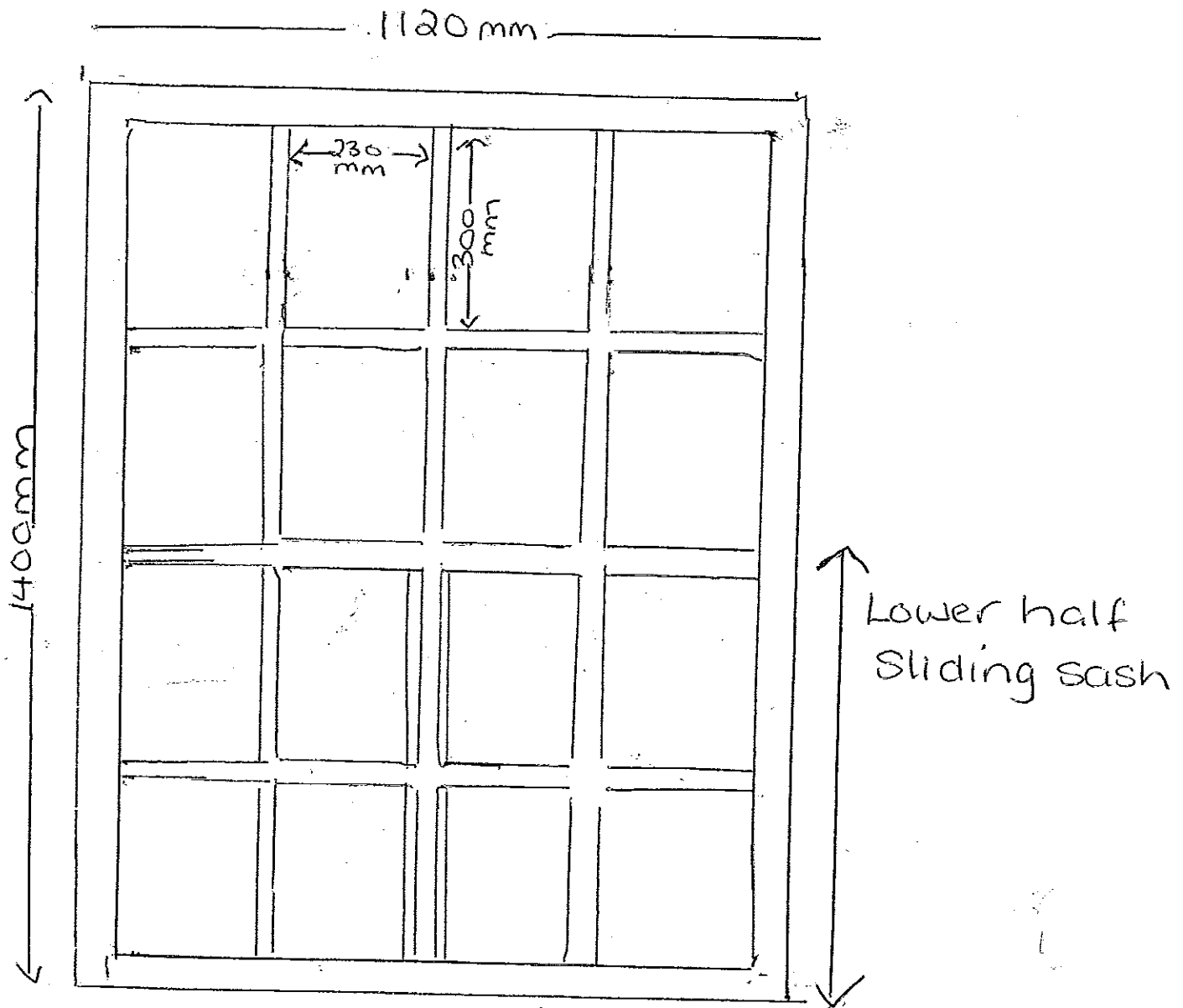
Location of proposed roof light.
 The gable end fronts new Road.
 The window is on the NNW aspect

NYMNPA
 20 JAN 2011

Your ref:- NYM/2010/0936/NEW

Proposed window design Wedgewood House

NYM / 2010 / 0952 / LB



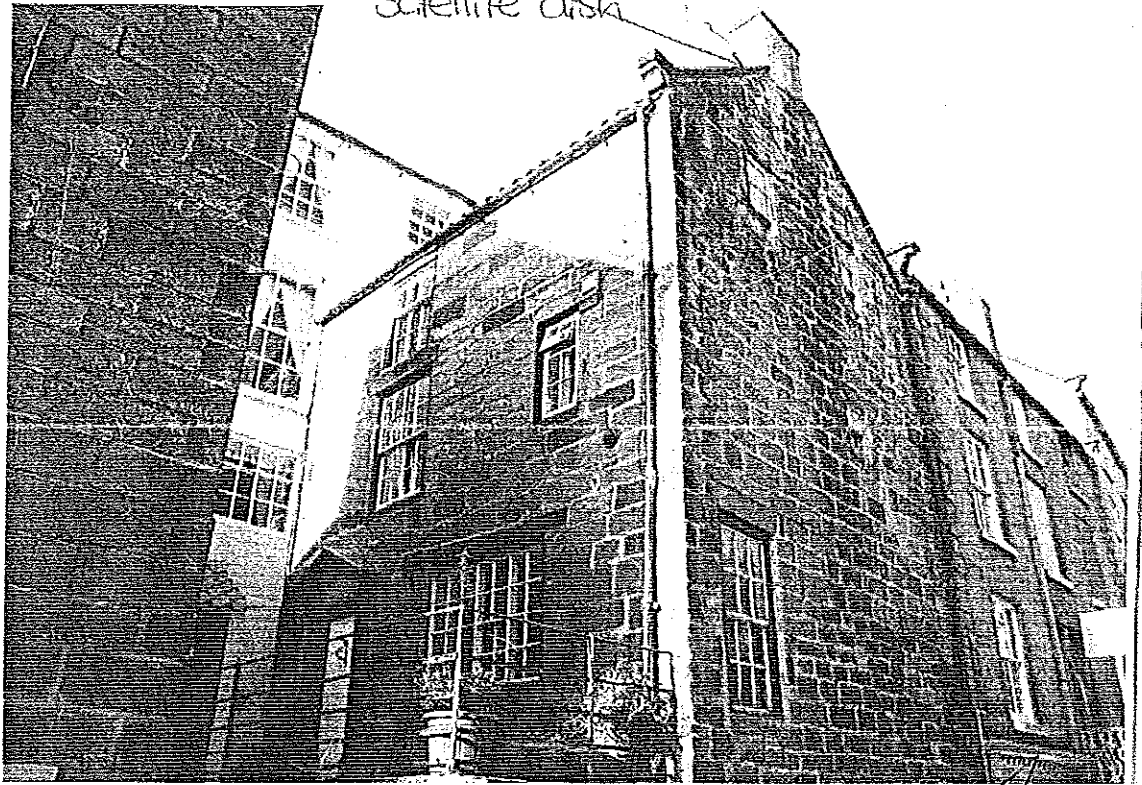
Construction - timber
Single glazing.

Exterior paint - farrow & ball cream shade
undecided as to exact one.

NYMNPA
20 JAN 2011

Your ref:- NYM/2010/0936/NEW

Proposed site of
Satellite dish



Your ref NYM/2010/0936/NEW

NYMNPA
20 JAN 2011