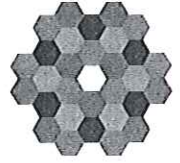
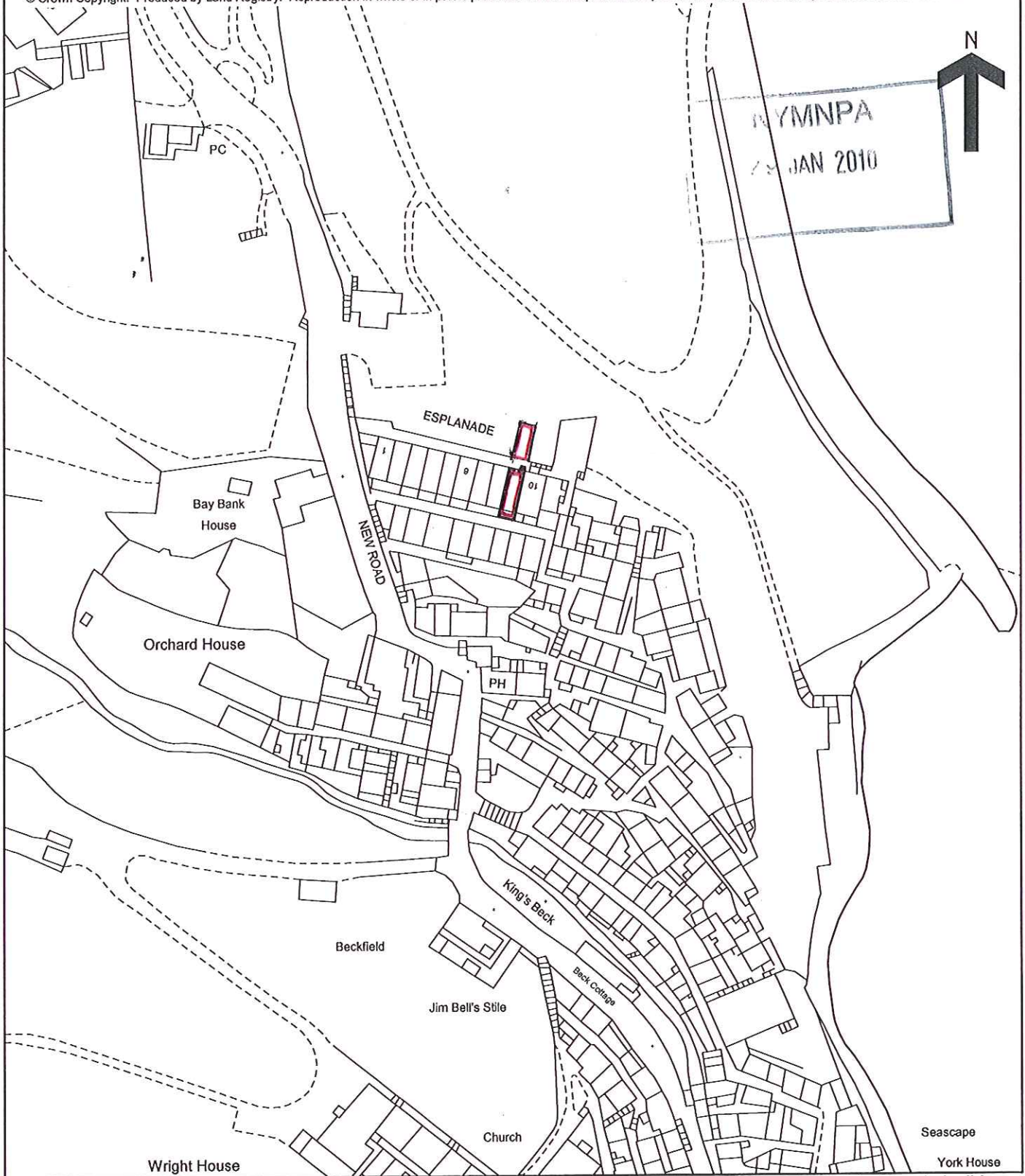


Land Registry
Official copy of
title plan

Title number **NYK166152**
Ordnance Survey map reference **NZ9505SW**
Scale **1:1250** enlarged from 1:2500
Administrative area **North Yorkshire: Scarborough**



© Crown Copyright. Produced by Land Registry. Reproduction in whole or in part is prohibited without the prior written permission of Ordnance Survey. Licence Number 100026316.

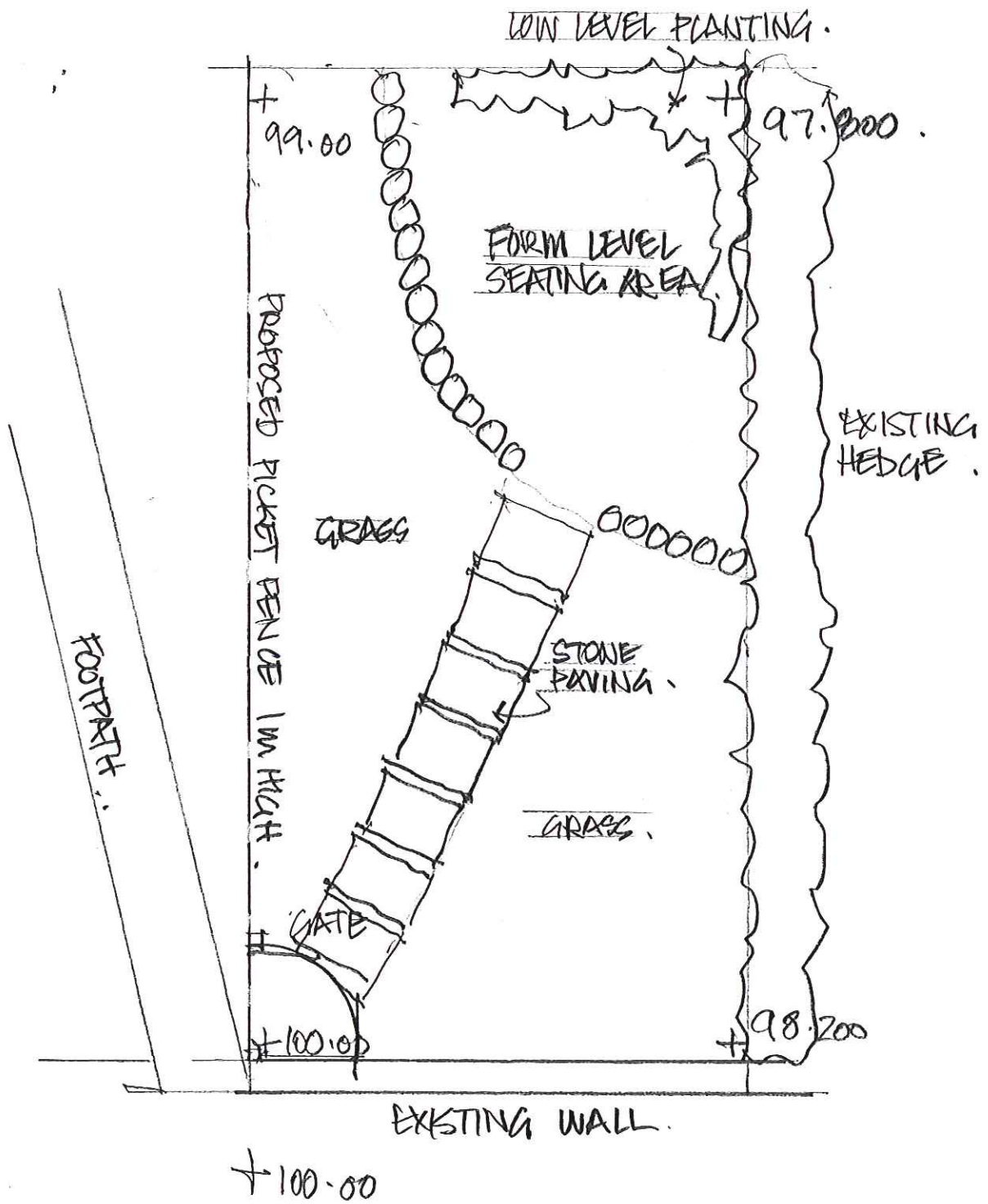


This official copy issued on 1 March 2007 shows the state of this title plan on 1 March 2007 at 14:32:24. It is admissible in evidence to the same extent as the original (s.67 Land Registration Act 2002).

This title plan shows the general position, not the exact line, of the boundaries. It may be subject to distortions in scale. Measurements scaled from this plan may not match measurements between the same points on the ground. See Land Registry Public Guide 7 - Title Plans.

This title is dealt with by Land Registry, York Office.

NYMNPA
23 JAN 2010



GARDEN PLAN. 1:50

A = Chimney stack with cement render to be removed and re-pointed using lime mortar.

B = Chimney stacks to be re-pointed using lime mortar.

C = Dormer window to be replaced with horizontal sliding sash window glazed with handmade cylinder glass.

D = Modern window to be replaced with Whitby Composite window.

E = Window to be replaced with 4 pane fixed light.

F = Roof light to be replaced with Velux Conservation roof light CR.6.



Existing

NYMNP
29 JAN 2010

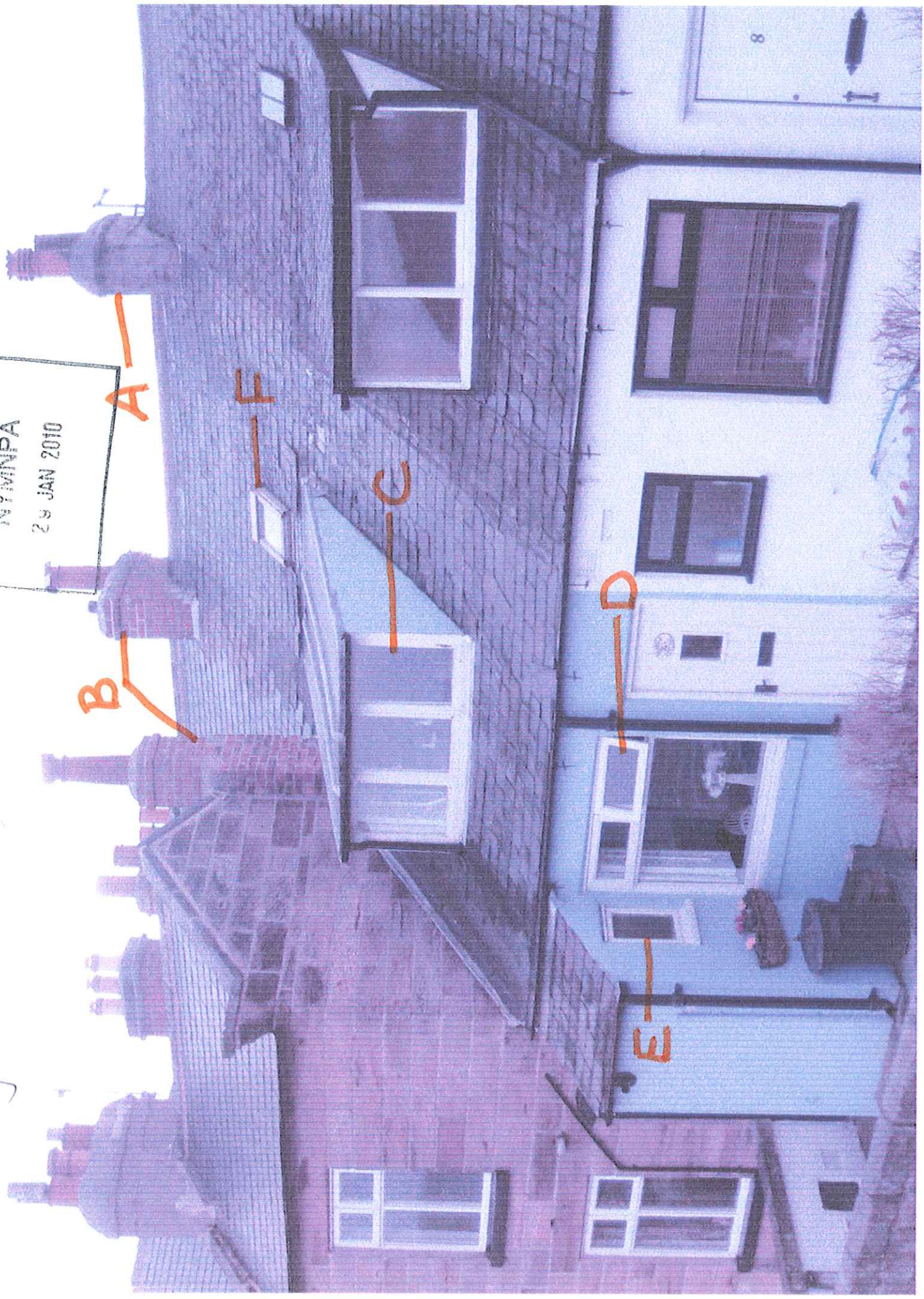
A
B

F

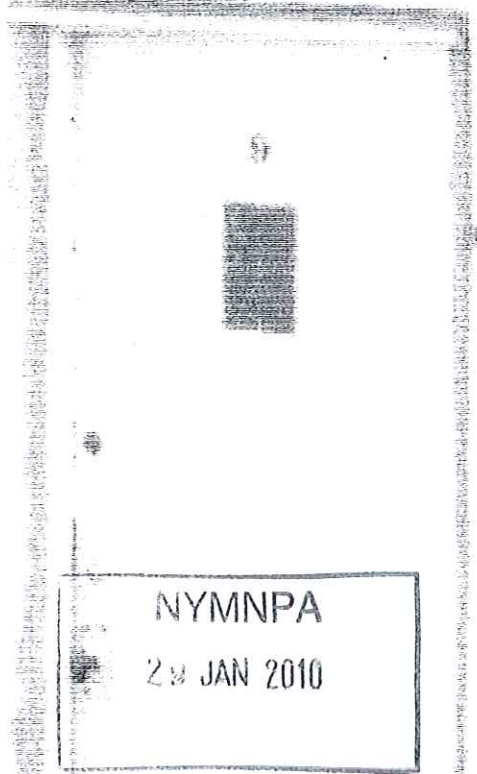
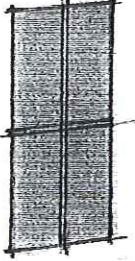
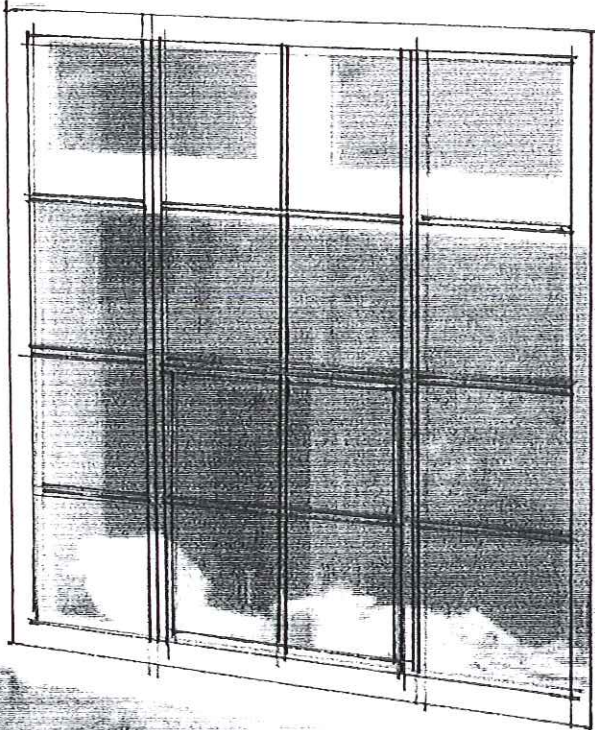
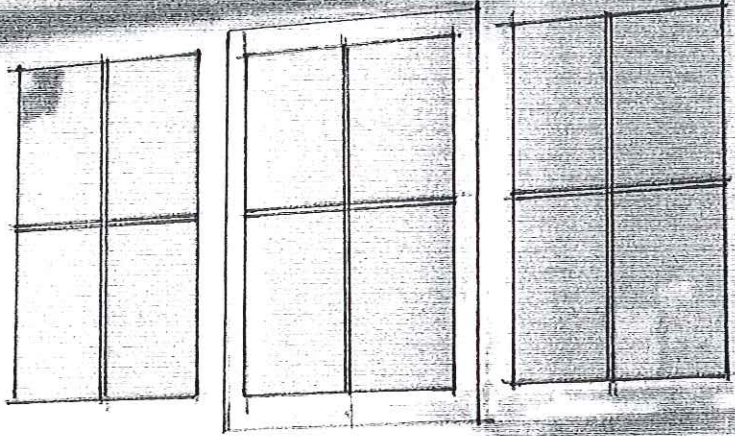
C

D

E



NYM / 2010 / 0072 / FL



NYMNP
28 JAN 2010

PROPOSED

NYMNP