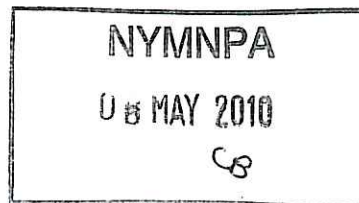


5<sup>th</sup> May 2010

FAO Hillary Saunders  
The Old Vicarage  
Bondgate  
Helmsley  
York  
YO22 4PU  
Your Reference: NYM/2010/0243/FC



Dear Hilary

**RE: Application for construction of a single story extension with entrance canopy at 16A Fairfield Way Whitby. Grid Reference NZ 491202 509310**

Further to our recent telephone conversation please find enclosed the additional information requested in respect of the proposed roof lights:

- Drawing No. 8000RP. This illustrates the proposed positions of the roof lights and the solar panel.
- Data sheet of an example GRP factory assembled roof light. There are many suppliers of this type of roof light but once installed they all look very similar. The proposed GRP roof lights will have a matching profile to the cladding sheets. Due to the relatively shallow pitch of the proposed roof, the installation of the roof lights will have minimal impact on the aesthetics.

With the proposed roof light layout the area covered by the translucent GRP sheets equates to 25% of the total roof area. This percentage will greatly assist with reducing the power consumption on lighting within the extension.

I trust the above and attached are in order, however should you have any queries or require further information please do not hesitate to get in touch.

Yours Sincerely 

Louis Stainthorpe BSc (Hons), MRICS, RMaPS, MEng (Director)  
CC. John Collinson

Enc.

4 copies of drawing No. 8000RP  
4 copies of roof light data sheet



# Daylight Systems

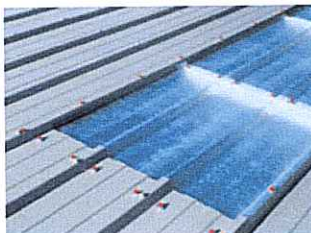
- [Brett Martin Home](#)
- [Daylight Systems Home](#)
- [Applications](#)
- [In Plane Rooflights](#)
- [Site Assembled](#)
- [Factory Assembled](#)
- [Product Range](#)
  - [EnergySaver](#)
  - [ECOpac](#)
  - [Fair](#)
- [Fair Installation](#)
  - [Installation Guidelines](#)
  - [Maintenance](#)
- [Technical Information](#)
  - [Safety](#)
  - [Rooflight Area](#)
  - [Thermal Efficiency](#)
- [Design Information](#)
  - [Rooflight options](#)
- [Installation](#)
  - [Installation Guidelines](#)
- [Xlok](#)
- [Out of Plane Rooflights](#)
- [Accessories](#)
- [Daylight](#)
- [Exhibitions](#)
- [Latest News](#)
- [Technical Articles](#)
- [Product Gallery](#)
- [Contact Us](#)
- [Links](#)

## Daylight In Everyday Life

### Fair

Brett Martin Daylight Systems Trilite brand of GRP is used extensively to provide natural daylight into a wide range of buildings and continues to be the UK's leading brand of GRP rooflight as a result of its consistent quality, strength and high light transmission levels.

- Brett Martin Daylight Systems was the first company to produce GRP rooflights with extended weathering capabilities
- The company has been manufacturing its Trilite brand of quality GRP sheet for almost 50 years
- GRP is a versatile, practical and cost-effective choice
- It provides diffused light and minimises distracting shadows, so is ideal in sporting, commercial, industrial and retail applications



### GPR Options



Safelight is the safest rooflight available, with unequalled safety margins and unmatched rigidity ensuring it will not be damaged by inadvertent foot traffic. Safelight is supplied with 'Diamond' long life surface protection as standard, providing optimum weather performance.



Trilite Ultra provides a range of heavyweight sheets that offer significantly greater safety margins than the minimum requirement, supplied as standard with the 'Superlife' enhanced UV protective system.



The standard Trilite range of sheet meets the required safety standards and is available in weights from 1.83kg/m<sup>2</sup> (6oz) to 3.05kg/m<sup>2</sup> (10oz), with all weather sheets supplied as standard with the 'Superlife' enhanced UV protective system.

### Options

- Optional on all GRP FAIRs is the unique 'Diamond' long life protection against weathering, UV degradation and chemical attack (standard on Safelight).
- Fire ratings of Class 0, Class 1 and Class 3 can all be specified.

### Polycarbonate FAIR

Marlon CS Longlife profiled polycarbonate FAIRs provide outstanding impact resistance and co-extruded UV protection to cut out 98% of harmful UV radiation and reduce the effect of sheet weathering. They are available in a wide and increasing profile range, with clear material giving excellent light transmission and tint options allowing control of light.



- In almost every situation, correctly specified and installed Marlon CS Longlife double skin FAIRs will achieve a rating of Class B non-fragility to ACR[M] 001:2000
- Shatter resistance of up to two hundred times that of glass means it is ideal where vandalism could be a problem, with the added benefit of excellent fire performance
- It can withstand temperature extremes of -40°C to 100°C without any significant deterioration of its properties and will not degrade or yellow due to heat
- It provides direct light and has a clear appearance



Search

**Go**

Product Selector  
Product Finder

>>

---

Previous Pages

Factory Assem...  
FAIR  
Factory Assem...  
FAIR

>>



"Rooflights provide good natural lighting"

Brett Martin Rooflight Resource Page



### Product

### Gallery

Photo Gallery showing our products and their applications

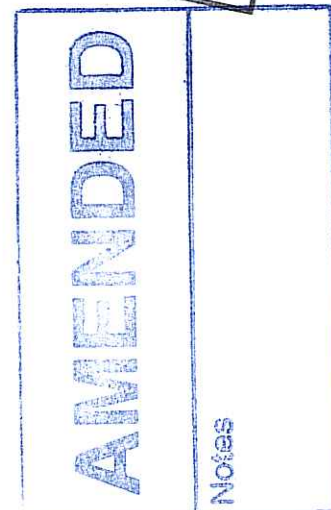
>>

### Technical Tools



Metric Conversion Table

>>



**Rooflight Options**

Rooflight	Non-Fragility Classification	Safety Level	Roof Access	Period of Non-Fragility	Light Transmission	U-Value
Trilite 2.4 FAIR	Class B	Good	Infrequent	5-20 years	65-70%	3.0
Trilite 3.0 FAIR	Class B	High	Infrequent	25+ years	65-70%	3.0
Trilite Ultra 36 FAIR	Class B	Very High	Regular	25+ years	60-65%	3.0
Trilite Ultra 45 FAIR	Class B	Very High	Frequent	25+ years	55-60%	3.0
Safelight FAIR	Class B	Exceptional	Frequent	30+ years	55-60%	3.0
Marlon CS Longlife FAIR	Class B	Good	Infrequent	10+ years	75%	3.0

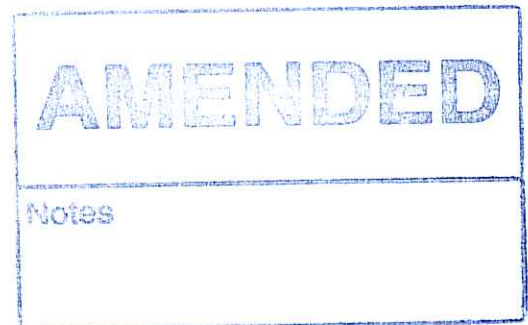
**NB:** These rooflights achieve a u-value of 3.0W/m2k. Part L2 now requires a minimum u-value of 2.2W/m2k. Energysaver provide options that meet the minimum standard.

The material options available enable the manufacture of Trilite FAIRs with increasing levels of safety and likely period of non-fragility. Polycarbonate FAIRs also achieve high levels of safety, please contact the Technical Department for full details.



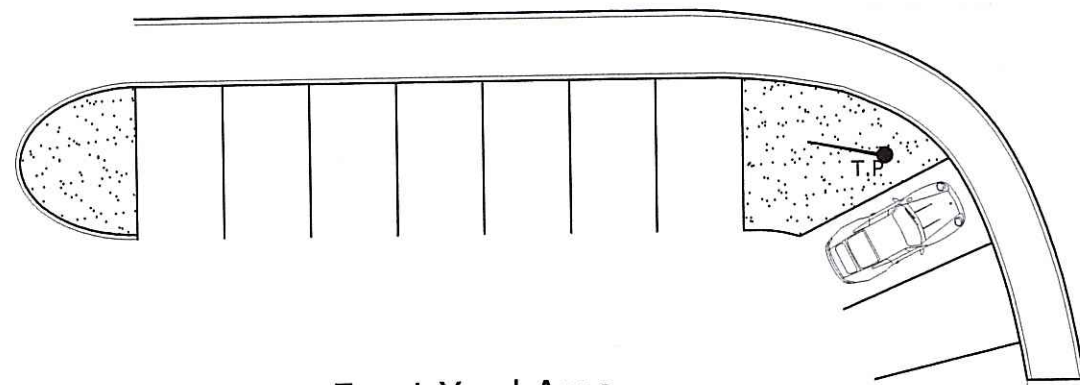
Feedback

© 2003 Brett martin All rights reserved

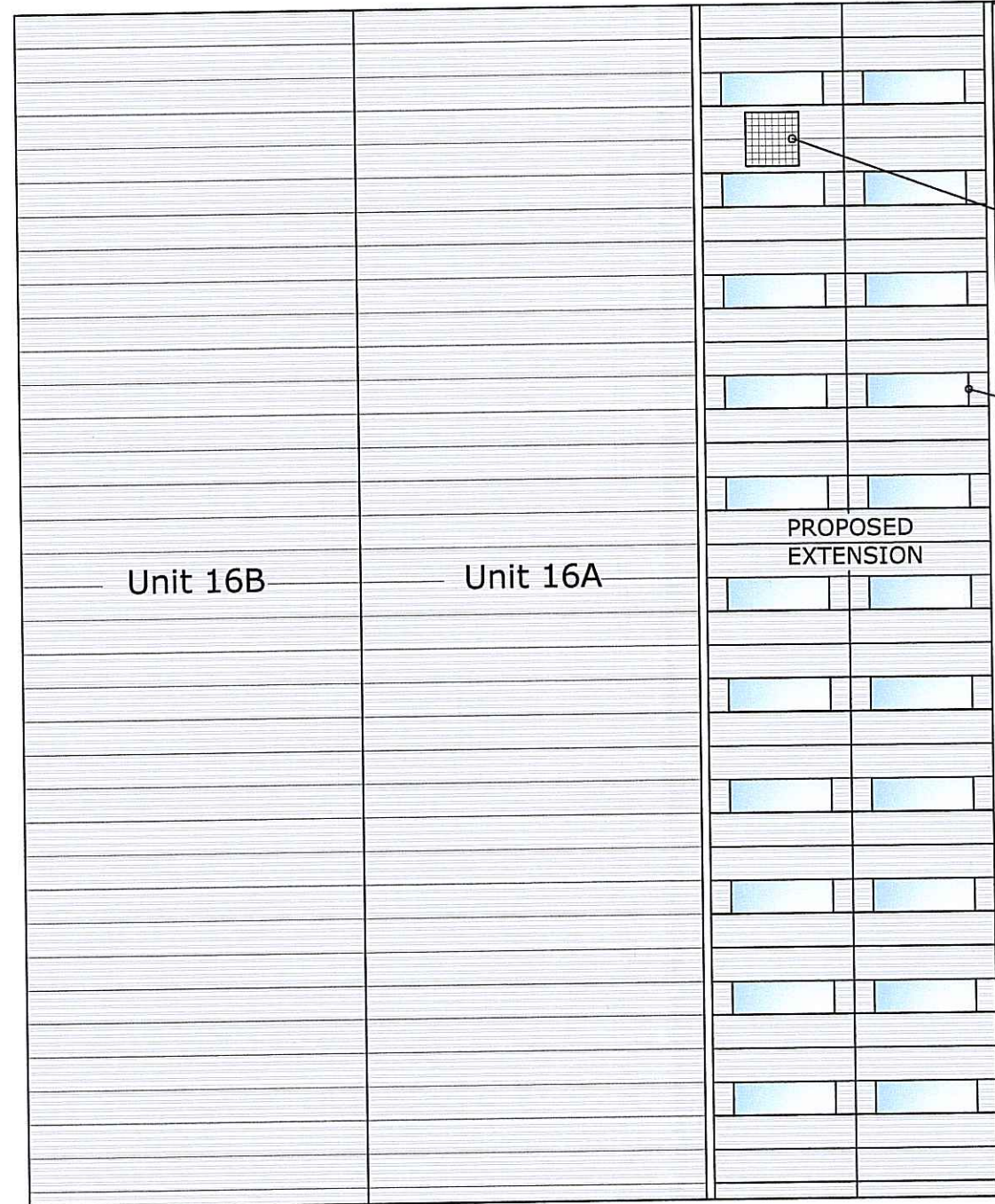




Fairfield Way



Front Yard Area



Proposed position of Solar Panel

Proposed positions of GRP factory assembled translucent sheets. 3.5m x 1.0m

PROPOSED EXTENSION

Yard Area

Unit 16B

Unit 16A

Notes

1.

**AMENDED**

Notes

**NYMNPA**  
06 MAY 2010

Rev.	Description	Date	Chk.

**Bell Snoxell Building Consultants Ltd**

**RICS** the mark of property professionalism worldwide

Bell Snoxell Building Consultants Ltd  
Barclays Bank House  
Baxtergate  
Whitby  
North Yorkshire  
YO21 1BW  
T: 01947 820262  
F: 01947 820644  
www.info@bell-snoxell.co.uk

Project: 16A Fairfield Way  
Whitby Business Park  
Whitby

Client: Mr John Collinson

Drawing: Roof plan of proposed extension

Date: 1st May 2010 Scale@A3: 1:200

Drawn By: LJS Check By: N/A Approved By:

Drawing Status: **PLANNING**

Job. no. Dwg. no. Rev.  
**S.8000 8000RP -**

A01. These notes are intended to augment drawings and specifications. Where conflict of requirements exists the order of precedence shall be as shown in the specification. Otherwise the strictest provision shall govern.  
A02. This drawing to be read in conjunction with all other relevant drawings.  
A03. Drawings not to be scaled. All dimensions to be checked on site by the contractor. Any discrepancies to be notified to the surveyor and further instructions obtained before work is commenced.  
No part of this drawing may be reproduced, stored in a retrieval system or transmitted in any form or by any means without prior permission in writing from Bell-Snoxell Associates Ltd.