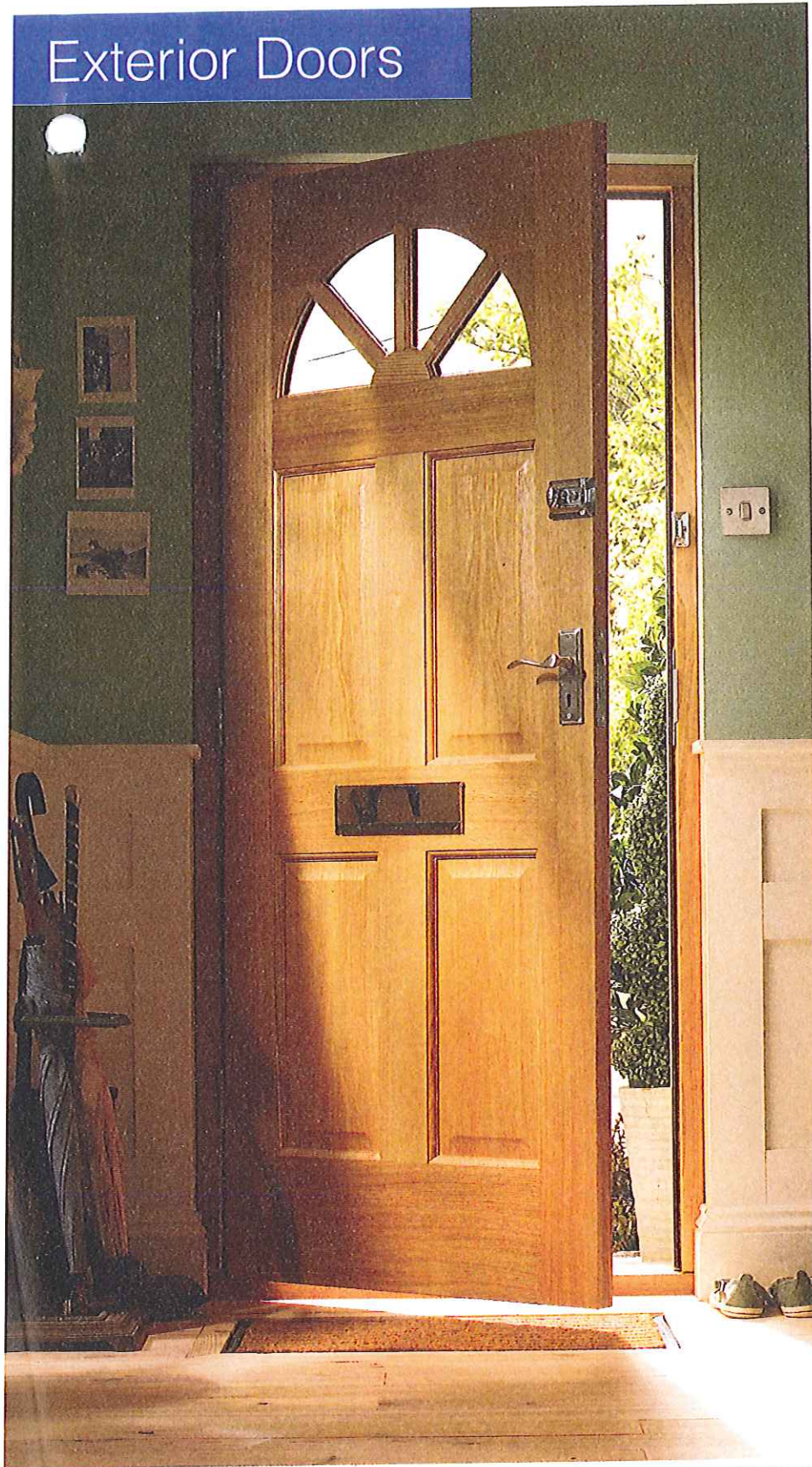


# Exterior Doors

53 / NM

FRONT DOOR



## Croft Oak Veneer

Leaded glass

1981 x 762mm (78 x 30") 205-894 **L4D**

1981 x 838mm (78 x 33") 205-869 **GND**

2032 x 813mm (80 x 32") 205-896 **L4D**

Indicative U Value 1.9 W/m<sup>2</sup>K



Total Overall Trim:  
Height 25mm  
Width 25mm

## Carolina Oak Veneer

1981 x 762mm (78 x 30") 205-882 **L4D**

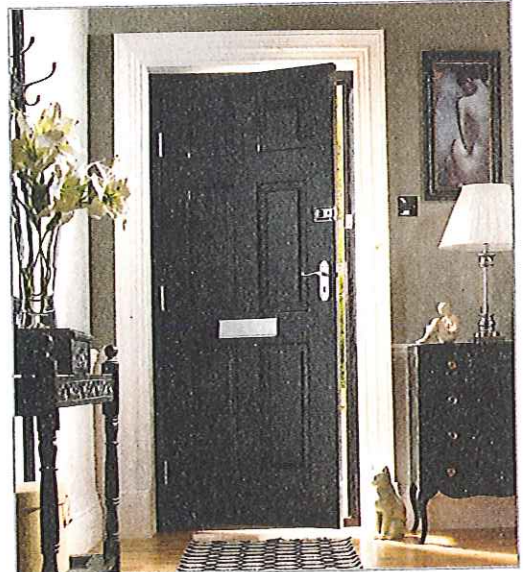
1981 x 838mm (78 x 33") 205-883 **GND**

2032 x 813mm (80 x 32") 205-884 **L4D**

Indicative U Value 2.3 W/m<sup>2</sup>K



Total Overall Trim:  
Height 25mm  
Width 12.5mm



## Colonial Oak Veneer

1981 x 762mm (78 x 30") 205-865 **GND**

1981 x 838mm (78 x 33") 205-866 **GND**

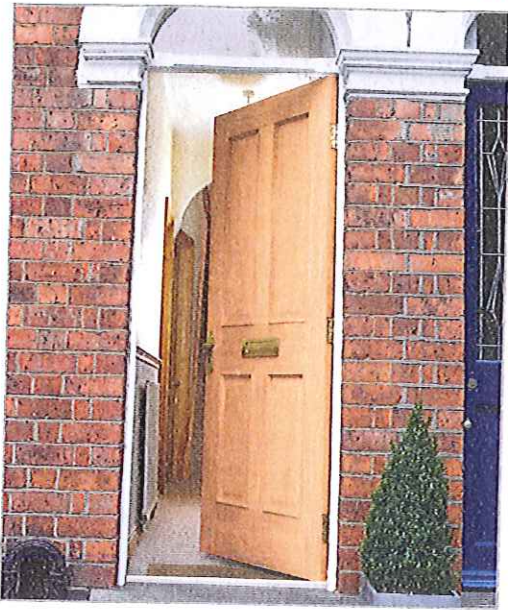
2032 x 813mm (80 x 32") 205-868 **GND**

Indicative U Value 2.3 W/m<sup>2</sup>K



Total Overall Trim:  
Height 25mm  
Width 25mm

Door furniture shown sold separately. All doors sold unfinished.

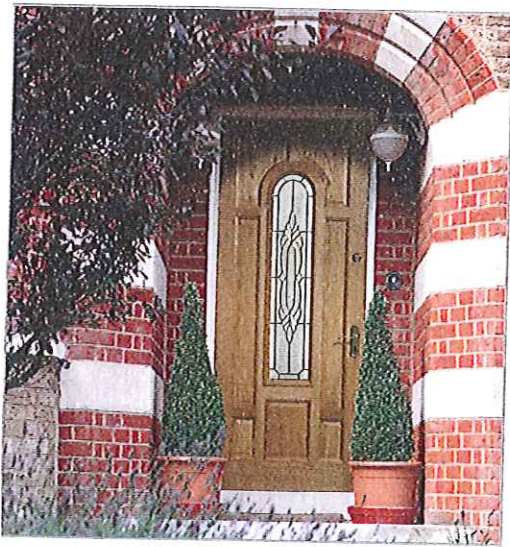


**Denham Oak Veneer**

1981 x 838mm (78 x 33") 205-864 **14D**



Total Overall Trim:  
Height 25mm  
Width 25mm



**Henley M&T Oak Veneer**

Mortice and tenon construction

Leaded glass

1981 x 762mm (78 x 30") 205-778 **14D**

1981 x 838mm (78 x 33") 208-999 **14D**

2032 x 813mm (80 x 32") 208-779 **14D**

**Upgrade to Pre-Hung Door Set**

(Frame sizes)

2067 x 850mm 155-294 **14D**

2067 x 925mm 155-295 **14D**

2118 x 901mm 155-296 **14D**

U VALUE 2.9 W/m2K



Total Overall Trim:  
Height 12.5mm  
Width 12.5 mm



**Stable Style M&T Oak Veneer**

Mortice and tenon construction

Leaded glass

1981 x 762mm (78 x 30") 205-897 **14D**

1981 x 838mm (78 x 33") 205-898 **14D**

2032 x 813mm (80 x 32") 205-899 **14D**

Indicative U VALUE 3.9 W/m2K\*



Total Overall Trim:  
Height 12.5mm  
Width 12.5 mm

**Upgrade to Pre-Hung Door Set**

(Frame sizes)

2067 x 850mm 205-900 **14D**

2067 x 925mm 205-901 **14D**

2118 x 901mm 205-902 **14D**

Door furniture shown sold separately. All doors sold unfinished. The Stable Style Pre-Hung Door is supplied with a Night Latch and Deadbolt Locking System due to its design.

# Exterior Door Sets



## Malton M&T Oak Veneer Hi Security Door

Our Malton Hi Security door allows you the combination of a classic design in oak veneer and all the security features you would only normally associate with PVCu. Not only does it share the pre-fitted 5 point locking system but additionally meets the rigorous PAS23 and PAS24 industry standards\* governing performance and enhanced security.

### Features:

- Supplied pre-hung in perfect alignment in a frame.
- Pre-fitted 5-Point Locking System, which conforms to the Association of British Standards and Specification requirements.
- Double glazed with toughened safety glass to BS 6206 Class A or BS: EN 12150 and weather tested to BS6375.
- Available as a Part M option on doors of 901mm and 925mm width.

*\* BACK + SIDE.*

- Supplied with handles and trimline door threshold in a Gold or satin chrome effect finish, the trimline has a double seal design for extra protection against rain and draught intrusion.
- Letter Plate option is available.
- Order using page 11 of the Doors Price List.
- Can be finished with a clear stain or Professional varnish to bring out the beauty of the veneer.

### Malton M&T Oak Veneer Hi Security Door (Frame sizes)

2067 x 850mm 205-888  
 2067 x 925mm 205-889  
 2118 x 901mm 205-890  
 Indicative U Value 2.2 W/m<sup>2</sup>K



\*On opening in option only.

There are many factors you'll consider when buying an Exterior door: how secure it is, what material it is made of and how weather tight or thermally efficient it is. We offer exterior doors in a variety of options to make sure you can find a door to meet your needs.

## Pre-Hung Doors

In many styles we offer an upgrade to a pre-hung option which is easier to install. The door is supplied fitted in perfect alignment in the frame and pre-fitted with a multi-point locking system\*. We also offer various other choices depending on the door, including right or left hand hung, opening in or out, a choice of finish for your door furniture, and the option to have the door fully finished at the factory. See the appropriate Order Form in the **Doors Price List** for details:



- Timber Pre-hung door options  
*Order Form on page 11*
- Fibreglass Hi Security Made-to-Measure  
*Order Form on page 10*
- PVCu Pre-hung door options  
*Order Form on back page*
- PVCu Plus Pre-hung door options  
*Order Form on back page*
- PVCu Plus Made-to-Measure door options  
*Order Form on page 10*
- Ascot and Eton French Doors  
*Order Form on page 9*
- All remaining doors (not pre-hung)  
*Order Form on back page*

Denham Oak Veneer Door - see page 35

\*Except Stable Style doors.