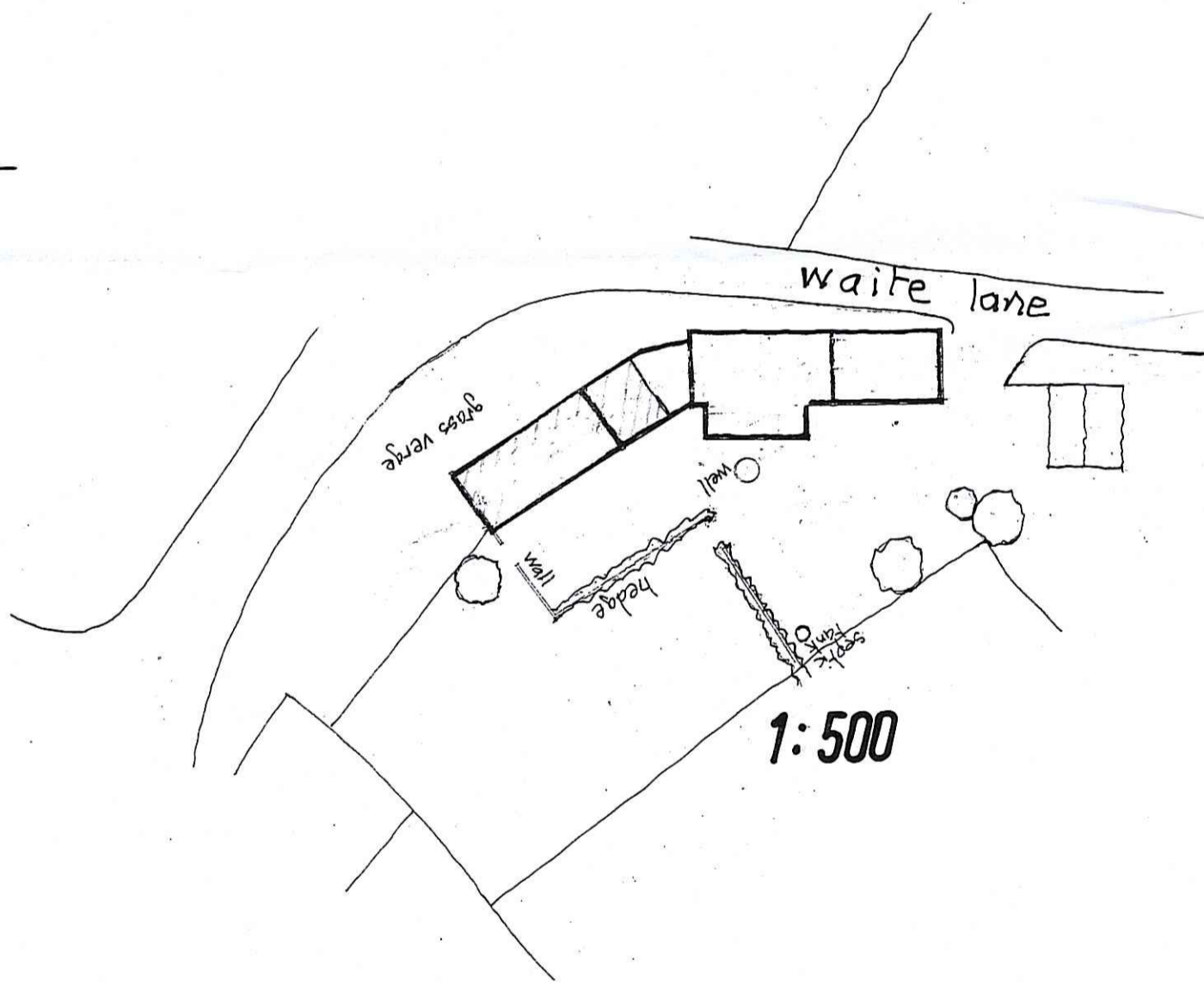
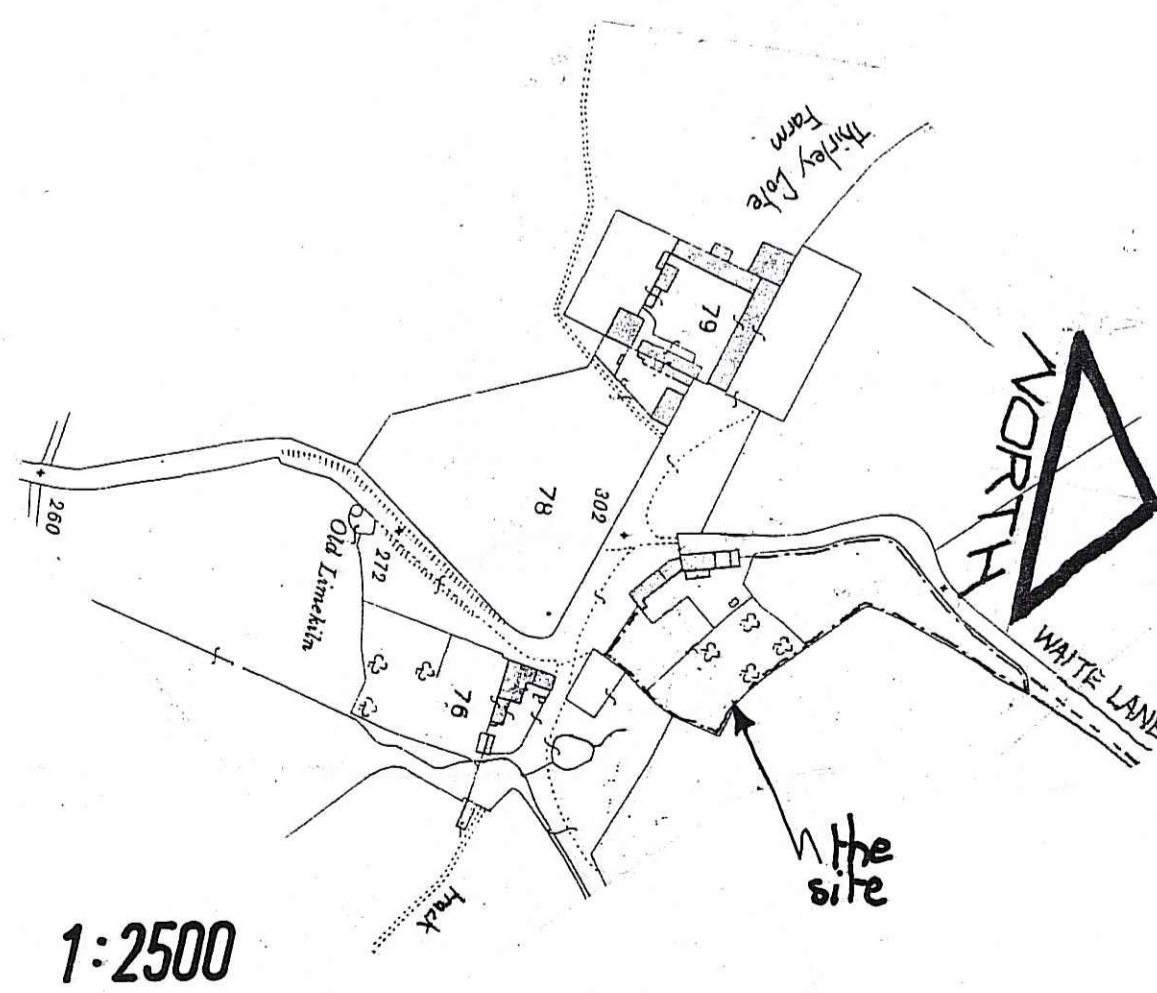


FIRST FLOOR



1:500



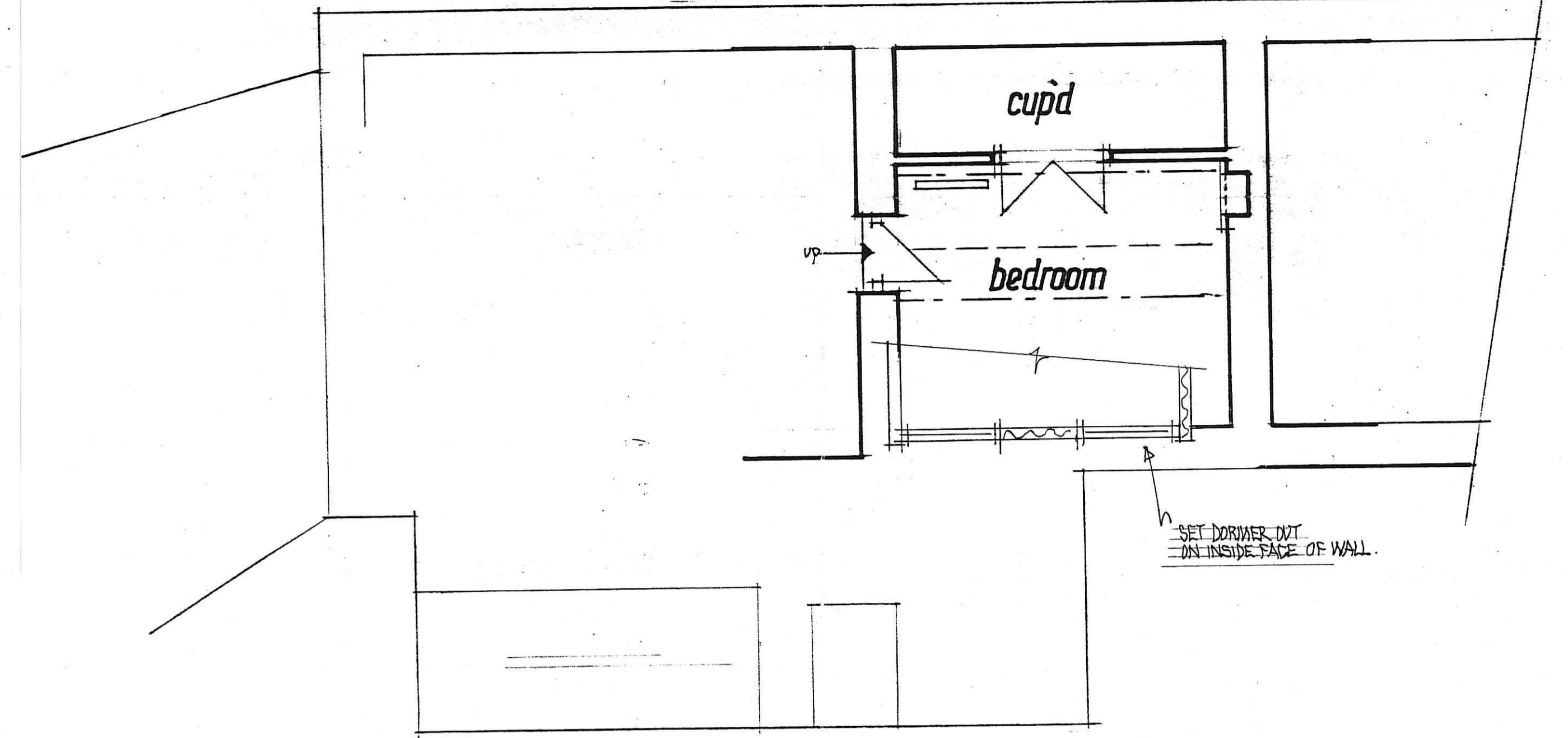
1:2500

NOTES

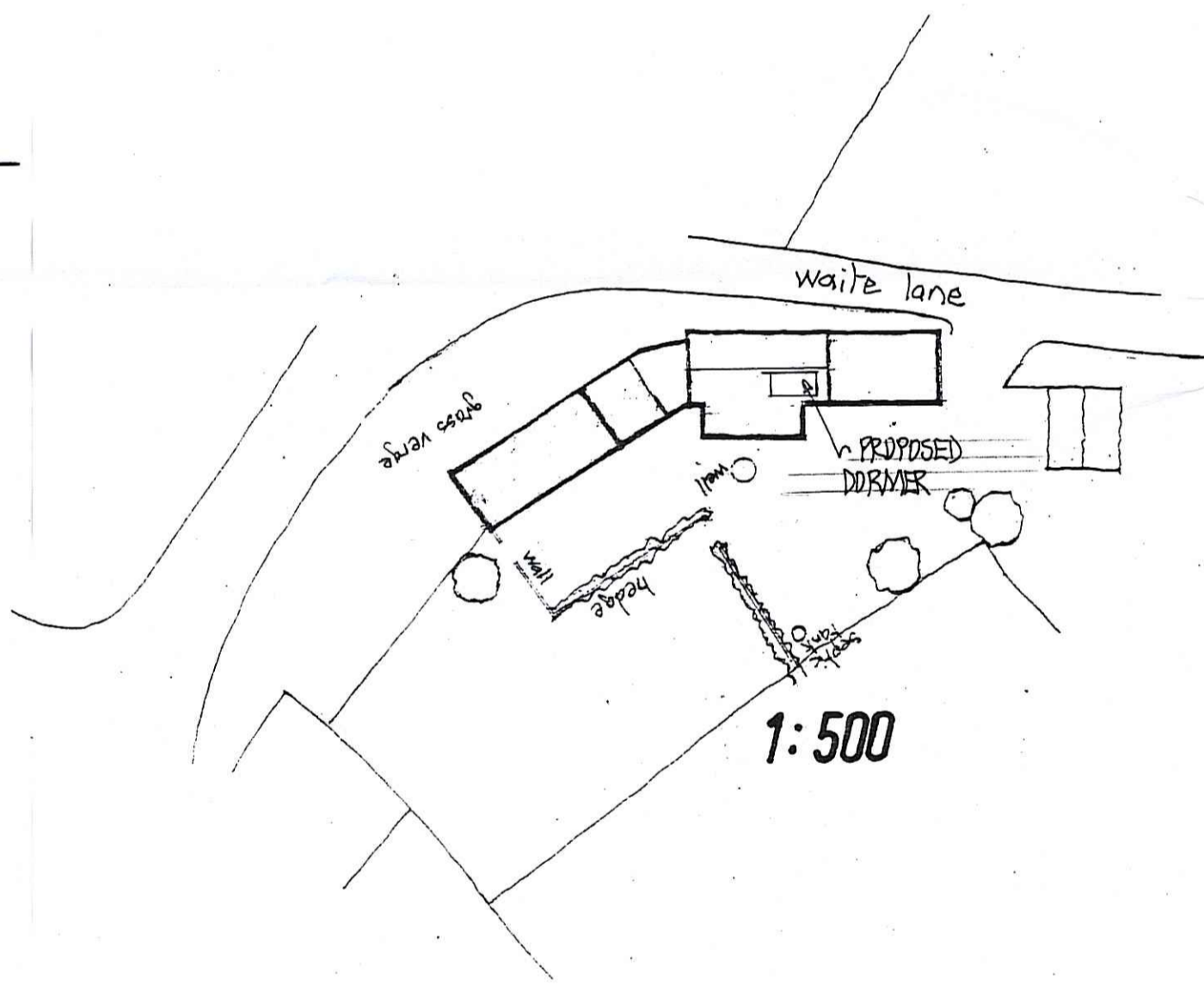
SCALE:
DO NOT TRY TO SCALE ACCURATELY FROM THESE DRAWINGS.
CHECKING:
ALL DIMENSIONS MUST BE CHECKED AND MEASURED ACCURATELY ON SITE PRIOR TO ORDERING ANY MATERIALS, FITTINGS, COMPONENTS, PARTS, ETC.
DISCREPANCIES:
ANY DISCREPANCIES IN THE DRAWINGS, SPECIFICATION OR WORKS MUST BE IMMEDIATELY BROUGHT TO THE CLIENTS / ARCHITECTS NOTICE.
MATERIALS AND WORKMANSHIP:
ALL WORK TO BE CARRIED OUT WITH PROPER MATERIALS AND IN A NEAT AND WORKMANLIKE MANNER.

REVISIONS

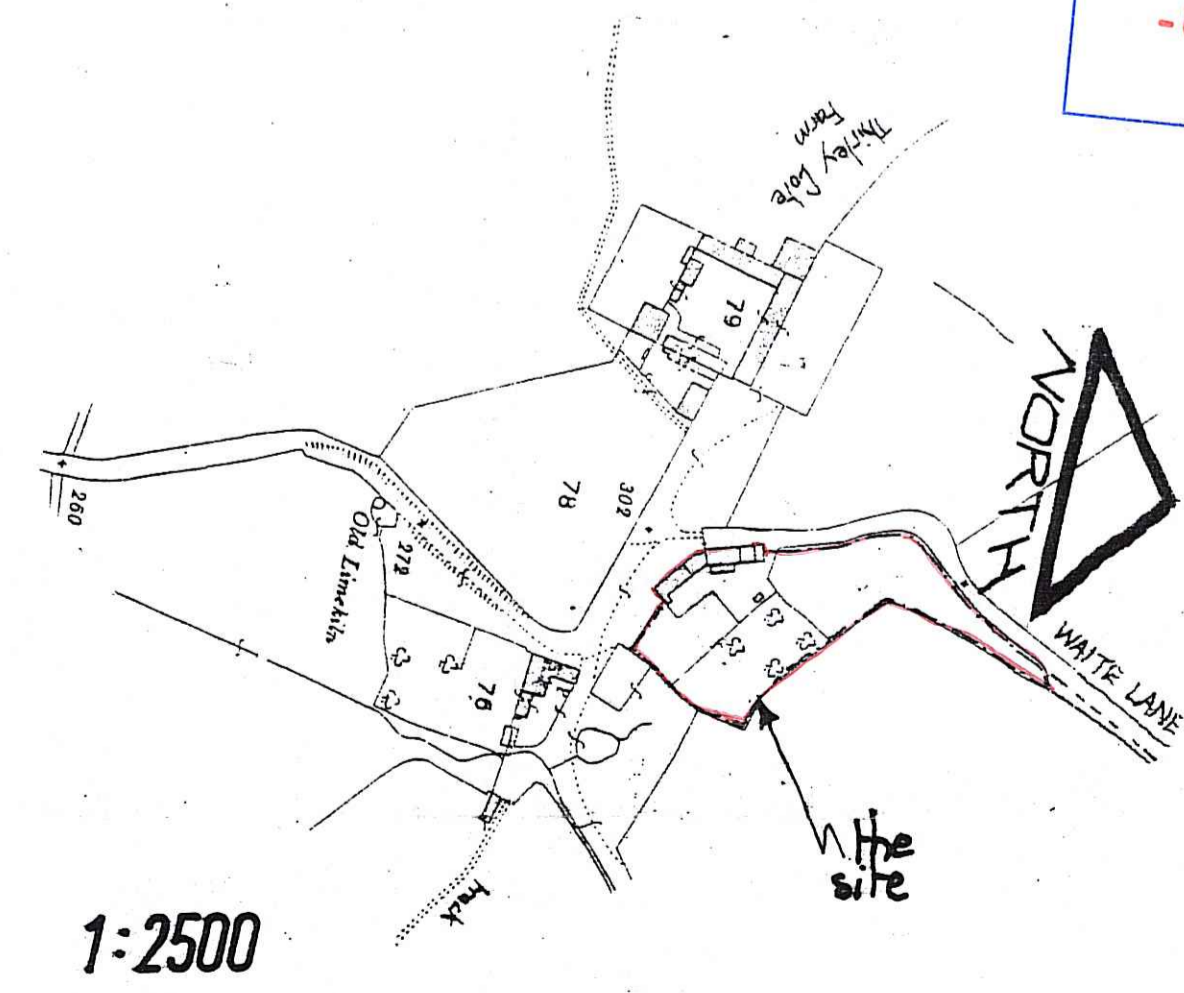
EXISTING Scale 1:50
 Drq. No. E17B 910/1
 THIRLEY COTES COTTAGE, HARWOOD DALE.



FIRST FLOOR



1:500



1:2500

NYMNP
 - 8 OCT 2010

NOTES

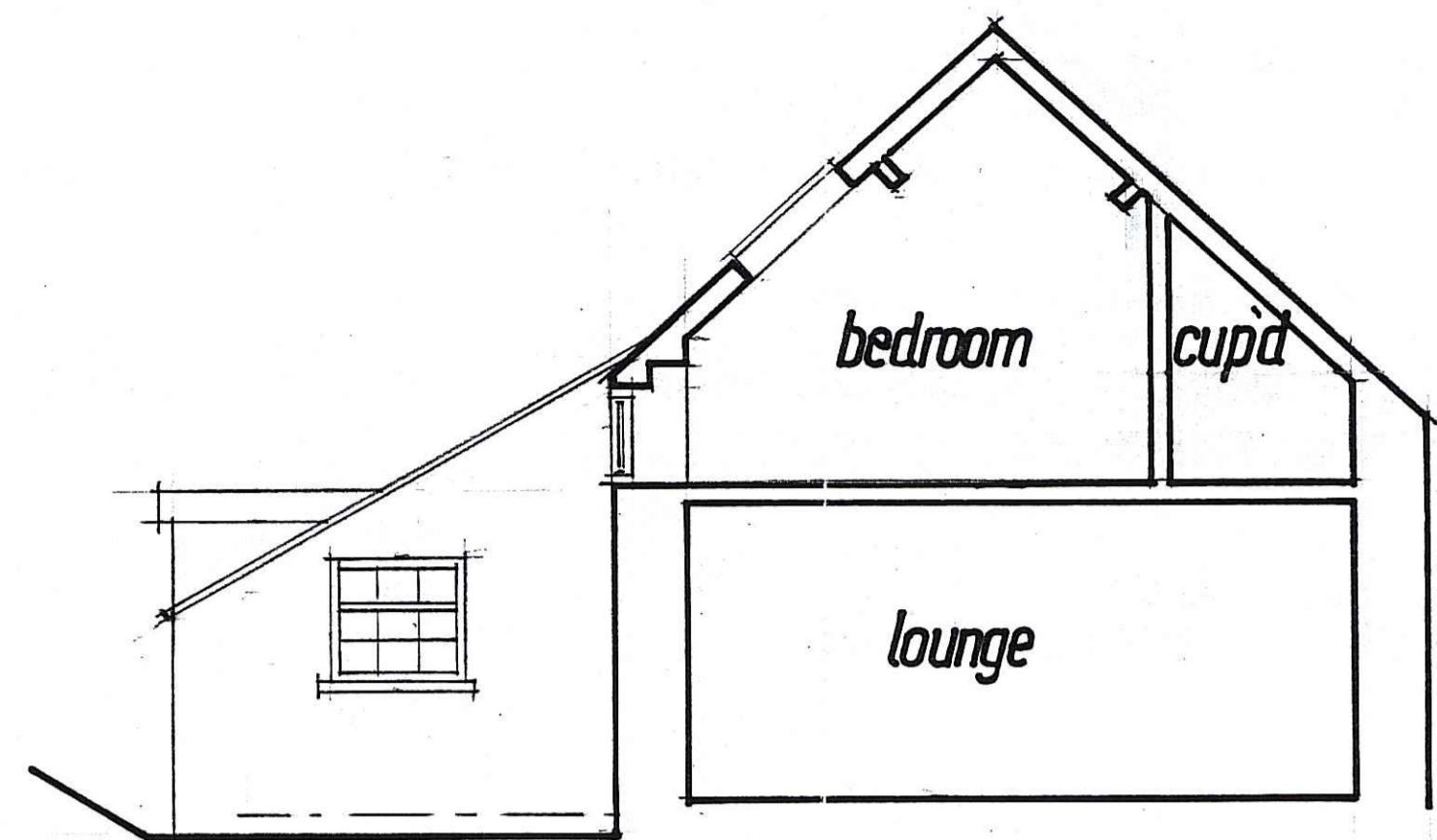
SCALE:
DO NOT TRY TO SCALE ACCURATELY FROM THESE DRAWINGS.
CHECKING:
ALL DIMENSIONS MUST BE CHECKED AND MEASURED ACCURATELY ON SITE PRIOR TO ORDERING ANY MATERIALS, FITTINGS, COMPONENTS, PARTS, ETC.
DISCREPANCIES:
ANY DISCREPANCIES IN THE DRAWINGS, SPECIFICATION OR WORKS MUST BE IMMEDIATELY BROUGHT TO THE CLIENTS / ARCHITECTS NOTICE.
MATERIALS AND WORKMANSHIP:
ALL WORK TO BE CARRIED OUT WITH PROPER MATERIALS AND IN A NEAT AND WORKMANLIKE MANNER.

REVISIONS

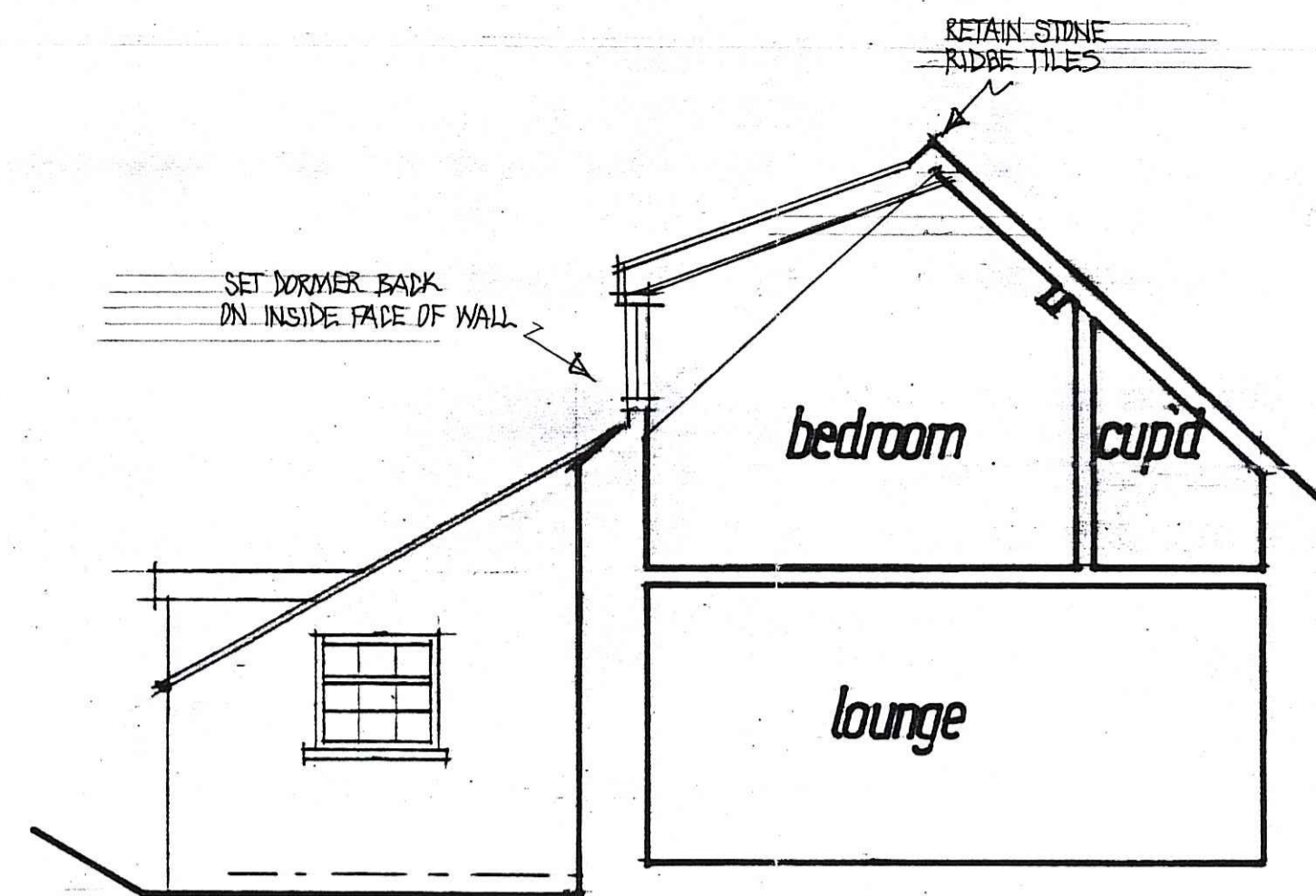
PROPOSED Scale 1:50
 Drq. No. E17B 910/3
 THIRLEY COTES COTTAGE, HARWOOD DALE.



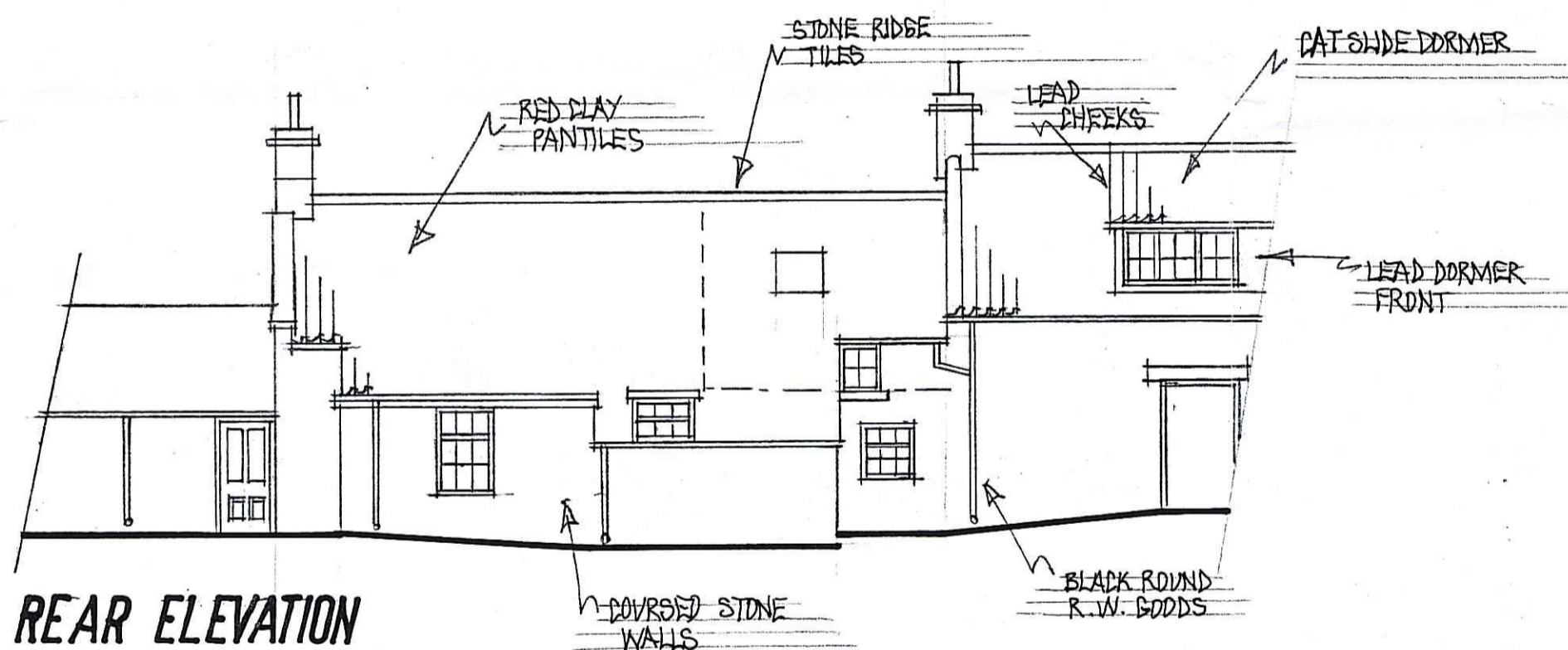
THIRLEY COTES COTTAGE HARWOOD DALE SCARBOROUGH N YORKS YO11 1TR TEL 01723 361310



SECTION



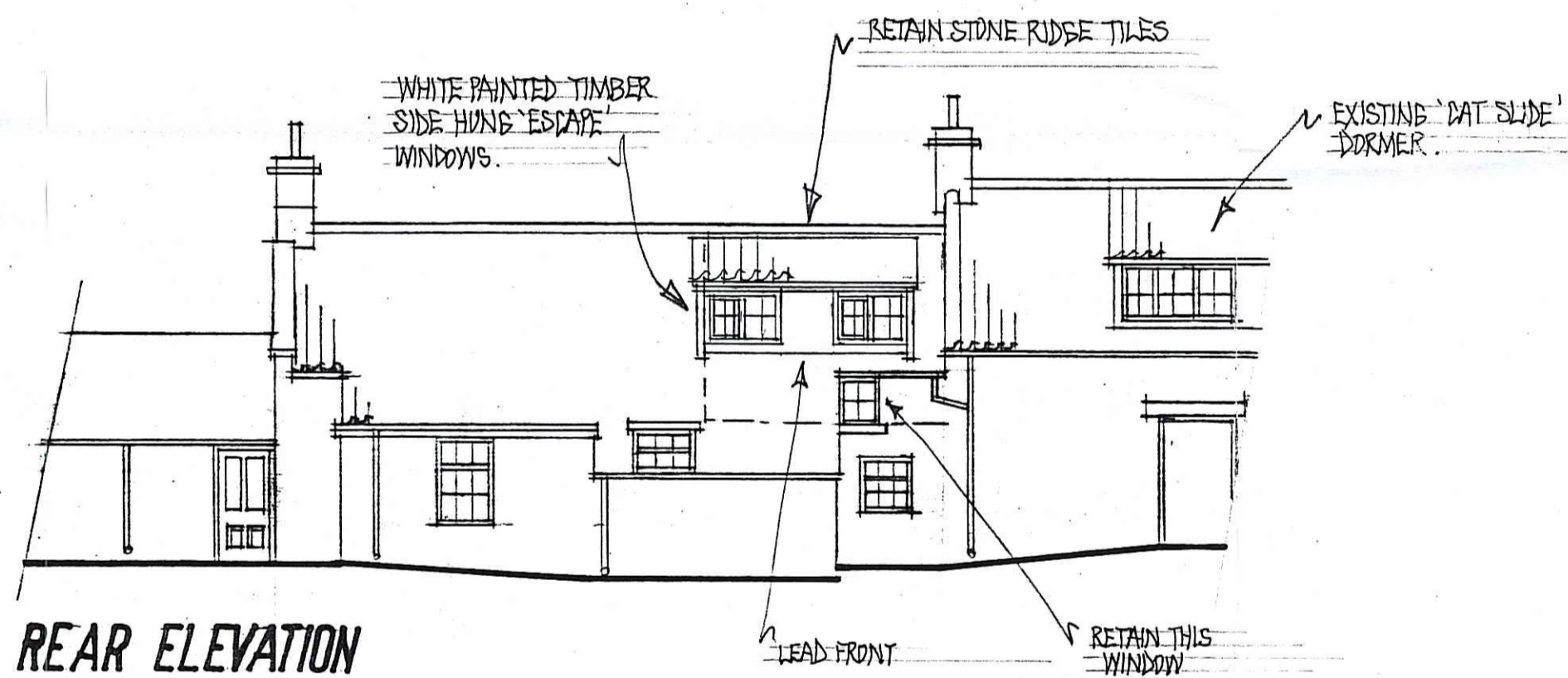
SECTION



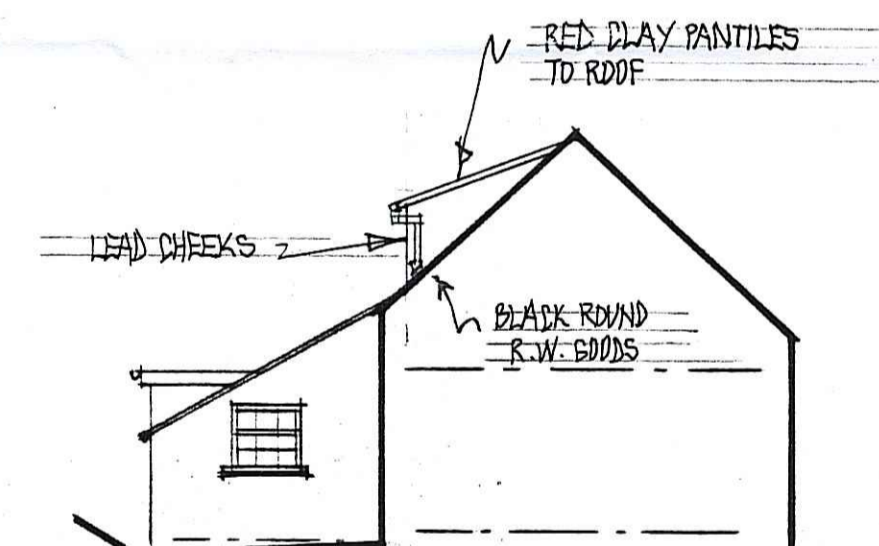
REAR ELEVATION



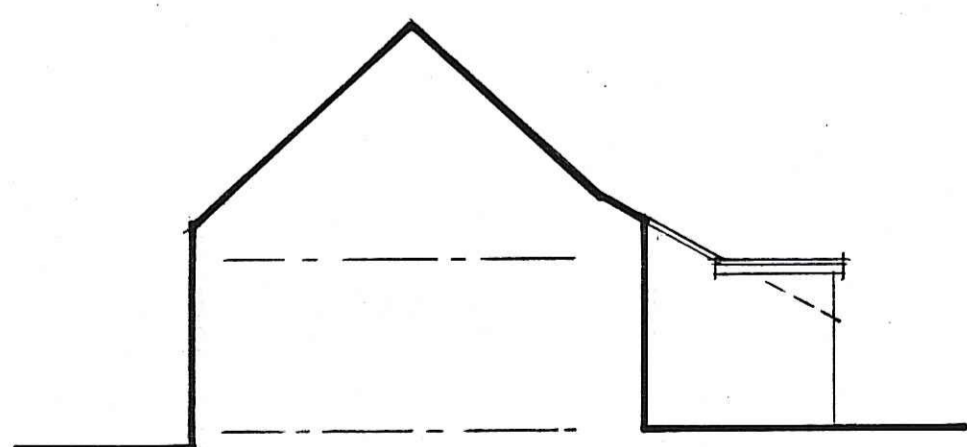
SIDE ELEVATION



REAR ELEVATION



SIDE ELEVATION



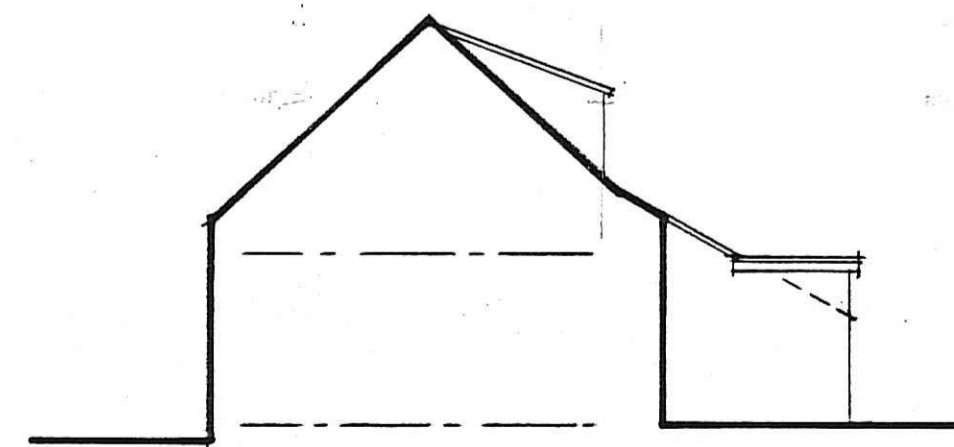
SIDE ELEVATION

NOTES

SCALE: DO NOT TRY TO SCALE ACCURATELY FROM THESE DRAWINGS.
 CHECKING: ALL DIMENSIONS MUST BE CHECKED AND MEASURED ACCURATELY ON SITE PRIOR TO ORDERING ANY MATERIALS, FITTINGS, COMPONENTS, PARTS, ETC.
 DISCREPANCIES: ANY DISCREPANCIES IN THE DRAWINGS, SPECIFICATION OR WORKS MUST BE IMMEDIATELY BROUGHT TO THE CLIENTS / ARCHITECTS NOTICE.
 MATERIALS AND WORKMANSHIP: ALL WORK TO BE CARRIED OUT WITH PROPER MATERIALS AND IN A NEAT AND WORKMANLIKE MANNER.

REVISIONS

EXISTING Scale 1:100+1:50
 Drg. No. E17B 910/2
 THIRLEY COTES COTTAGE, HARWOOD DALE.



SIDE ELEVATION

NOTES

SCALE: DO NOT TRY TO SCALE ACCURATELY FROM THESE DRAWINGS.
 CHECKING: ALL DIMENSIONS MUST BE CHECKED AND MEASURED ACCURATELY ON SITE PRIOR TO ORDERING ANY MATERIALS, FITTINGS, COMPONENTS, PARTS, ETC.
 DISCREPANCIES: ANY DISCREPANCIES IN THE DRAWINGS, SPECIFICATION OR WORKS MUST BE IMMEDIATELY BROUGHT TO THE CLIENTS / ARCHITECTS NOTICE.
 MATERIALS AND WORKMANSHIP: ALL WORK TO BE CARRIED OUT WITH PROPER MATERIALS AND IN A NEAT AND WORKMANLIKE MANNER.

REVISIONS

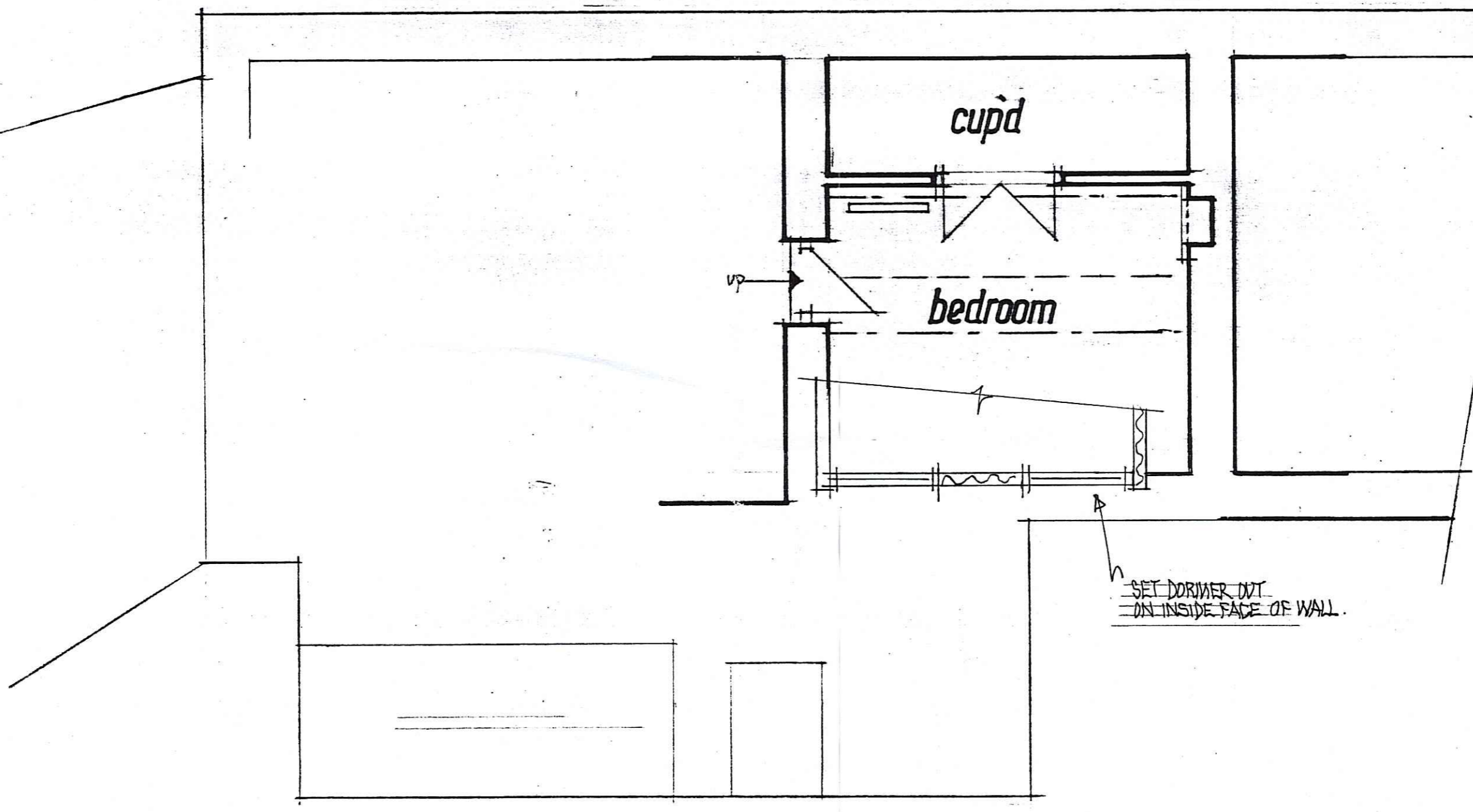
PROPOSED Scale 1:100+1:50
 Drg. No. E17B 910/4
 THIRLEY COTES COTTAGE, HARWOOD DALE.

THIRLEY COTES COTTAGE HIGH STREET BRIMPTON BY SANDON N YORKS YO13 9DA TEL 0723 850288

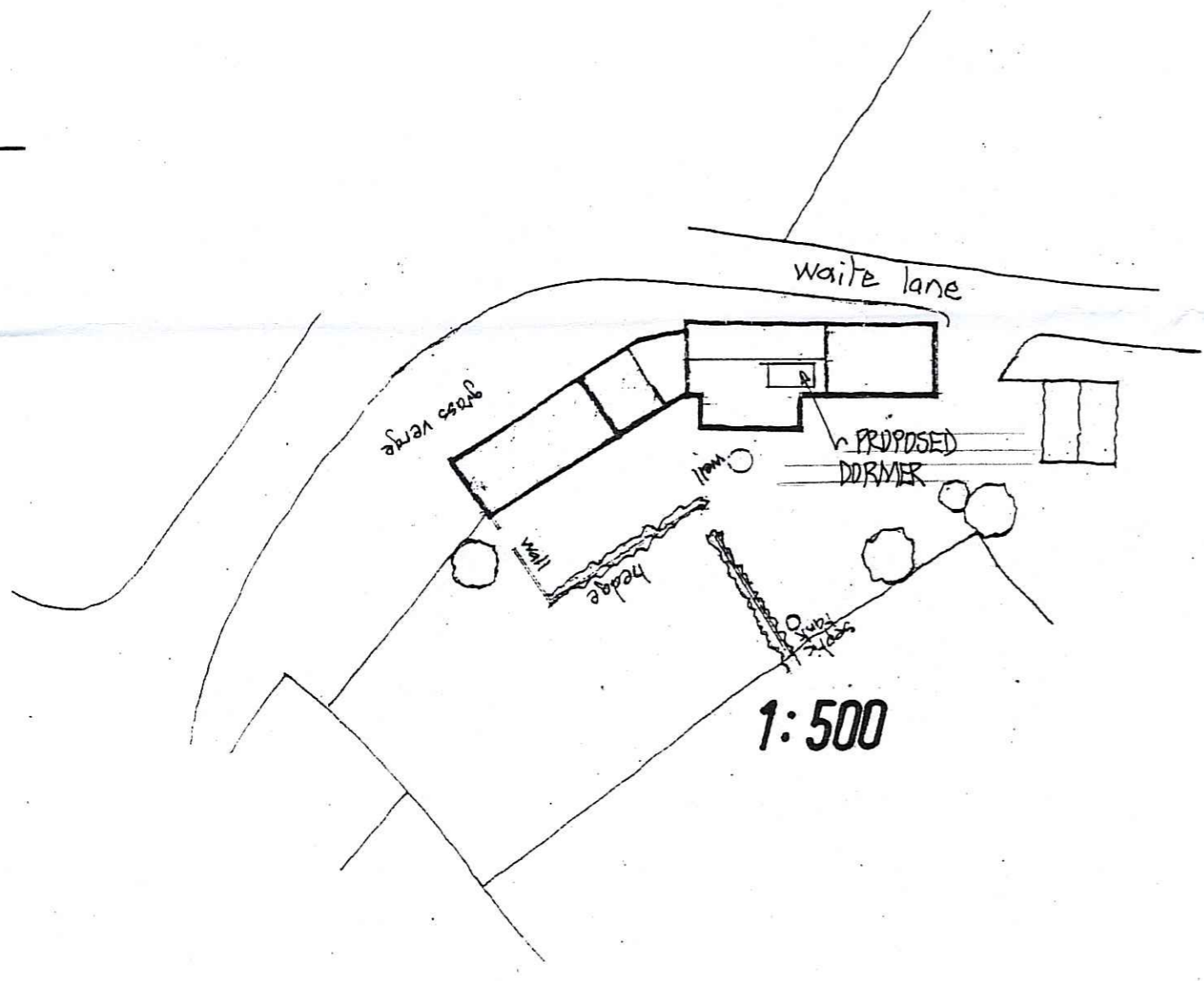
THIRLEY COTES COTTAGE HIGH STREET BRIMPTON BY SANDON N YORKS YO13 9DA TEL 0723 850288



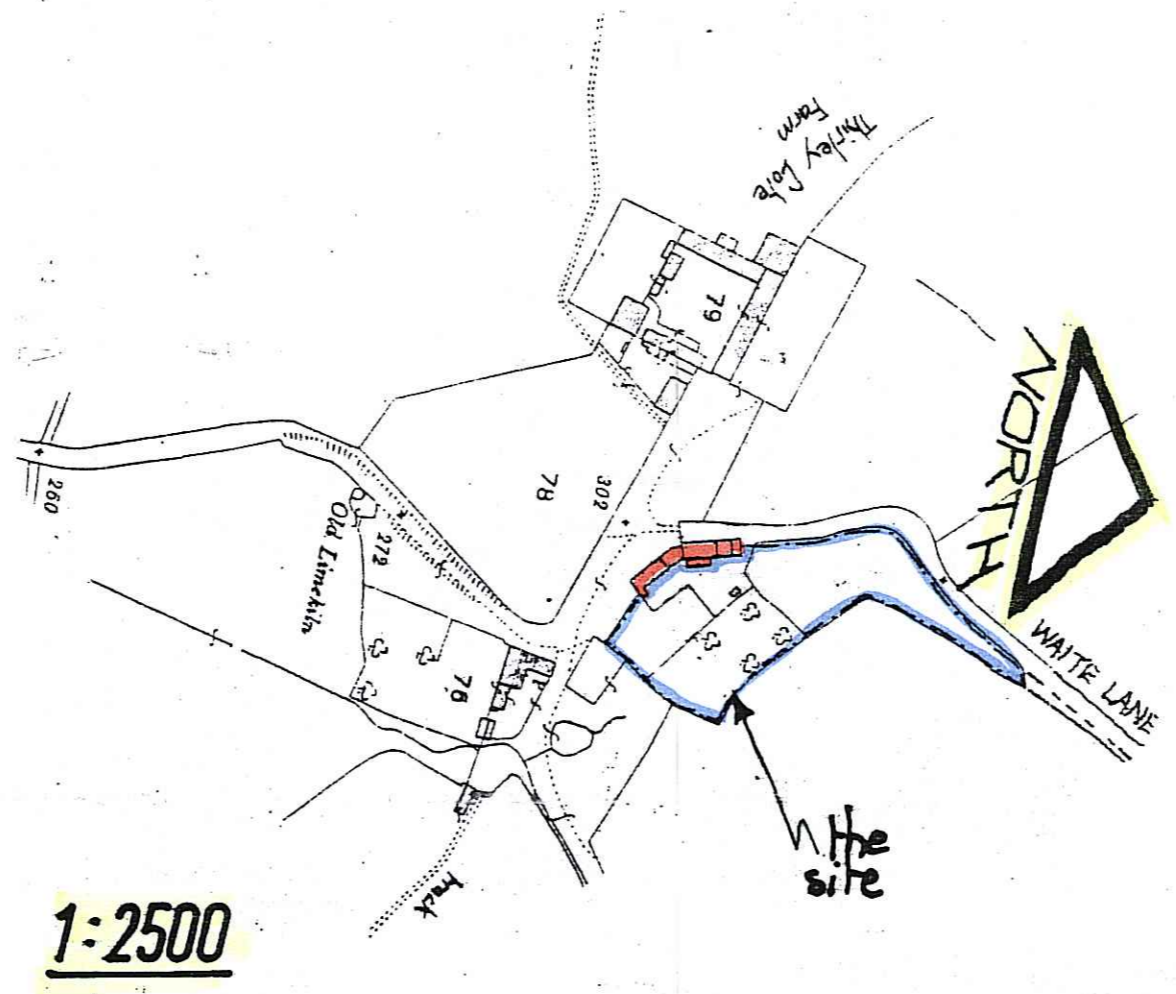
NYMNP/PA
 19 OCT 2010



FIRST FLOOR



1:500



1:2500

NOTES

SCALE:-
 DO NOT TRY TO SCALE ACCURATELY FROM THESE DRAWINGS.
 CHECKING:-
 ALL DIMENSIONS MUST BE CHECKED AND MEASURED ACCURATELY ON SITE PRIOR TO ORDERING ANY MATERIALS, FITTINGS, COMPONENTS, PARTS, ETC.
 DISCREPANCIES:-
 ANY DISCREPANCIES IN THE DRAWINGS, SPECIFICATION OR WORKS MUST BE IMMEDIATELY BROUGHT TO THE CLIENTS / ARCHITECTS NOTICE.
 MATERIALS AND WORKMANSHIP:-
 ALL WORK TO BE CARRIED OUT WITH PROPER MATERIALS AND IN A NEAT AND WORKMANLIKE MANNER.

REVISIONS

PROPOSED Scale 1:50
 Drq.No E17B 910/3

THIRLEY COTES COTTAGE, HARWOOD DALE.



JASMINE COTTAGE HIGH STREET BRIMPTON BY SANDON N YORKS YO13 9DA TEL 0723 852288