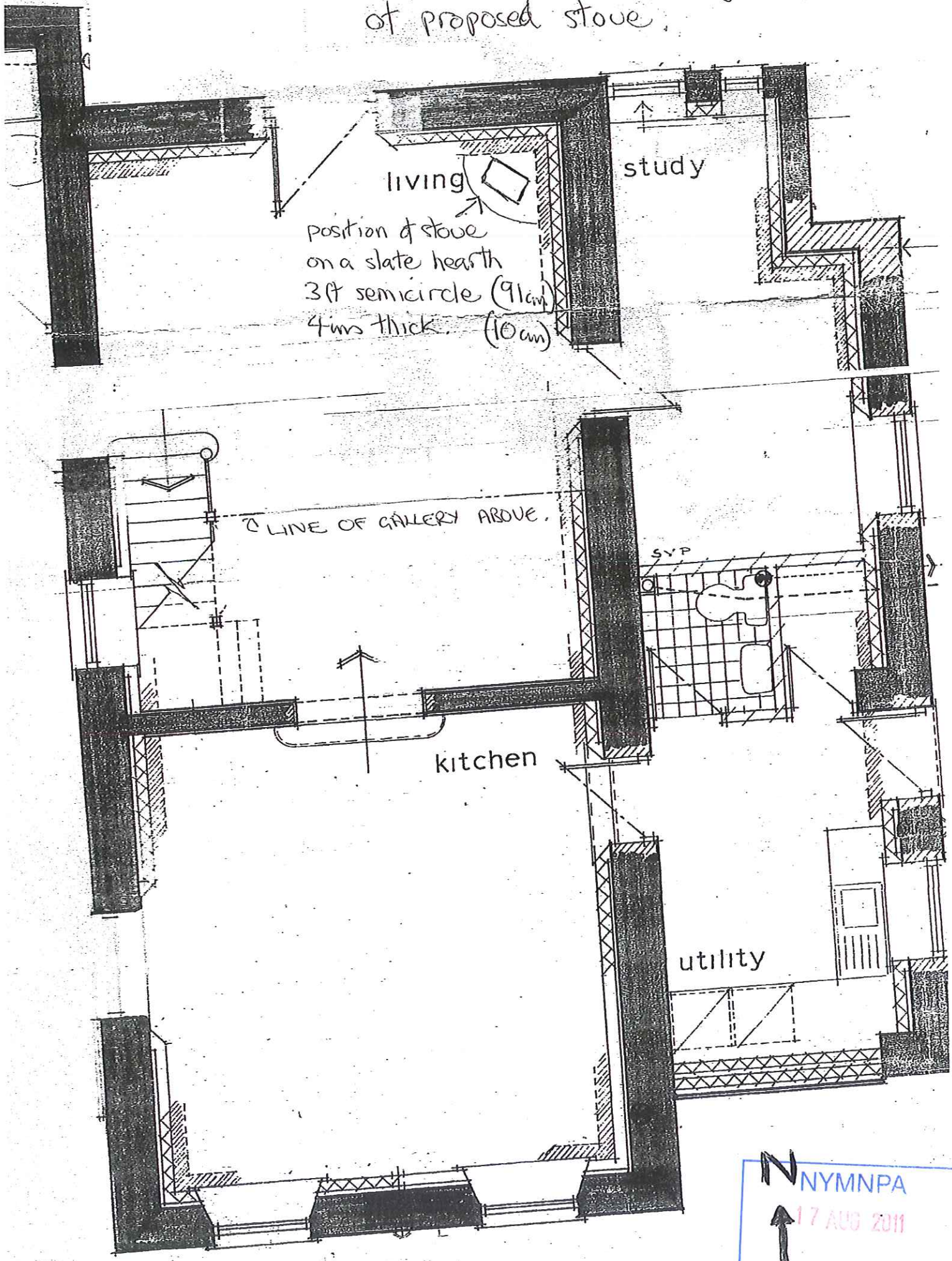


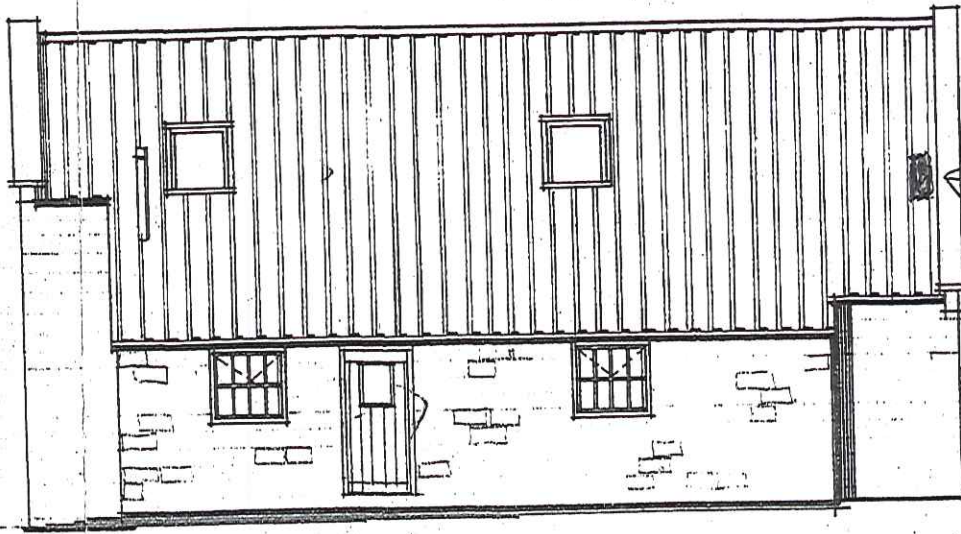
GROUND PLAN Scale 1:50 showing position of proposed stove.



N  
NYMNP  
17 AUG 2011

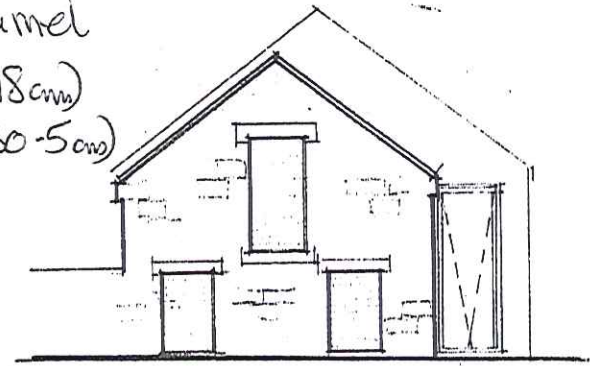


NORTH AND EAST ELEVATIONS Scale 1:100 showing position of proposed flue.



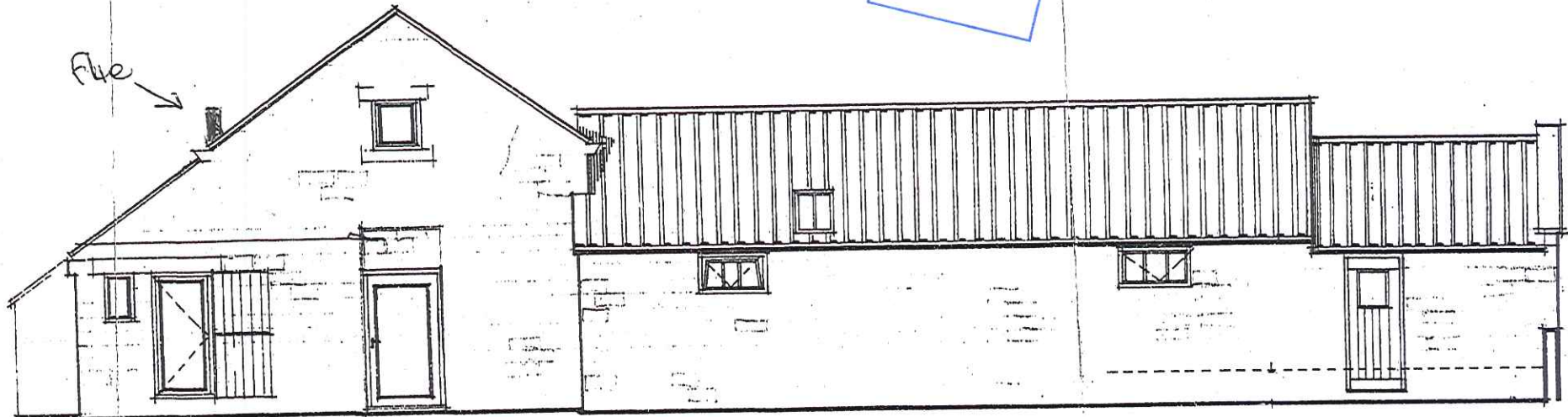
EAST

flue black enamel  
2" diameter (18cm)  
12" high (30-5cm)  
Lead flashings  
to tiles



utility gable

NYMIPA  
17 AUG 2011

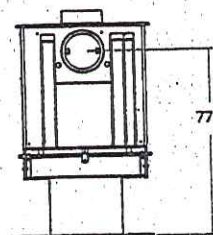
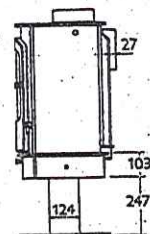
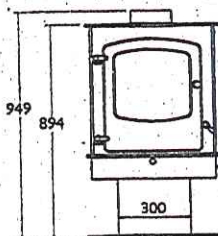


NORTH

# DIMENSIONS OF STOVE.

NYMNP  
 17 AUG 2011

<b>RATED OUTPUT</b>
8kW to room (range 3-10kW)
<b>NET EFFICIENCY</b>
74.7%
<b>FLUE OUTLET</b>
Top or Rear 150mm (6") dia
<b>MAX. LOG LENGTH</b>
370 mm (14.5")
<b>WEIGHT</b>
Centre stand - 146kg



CENTRE STAND