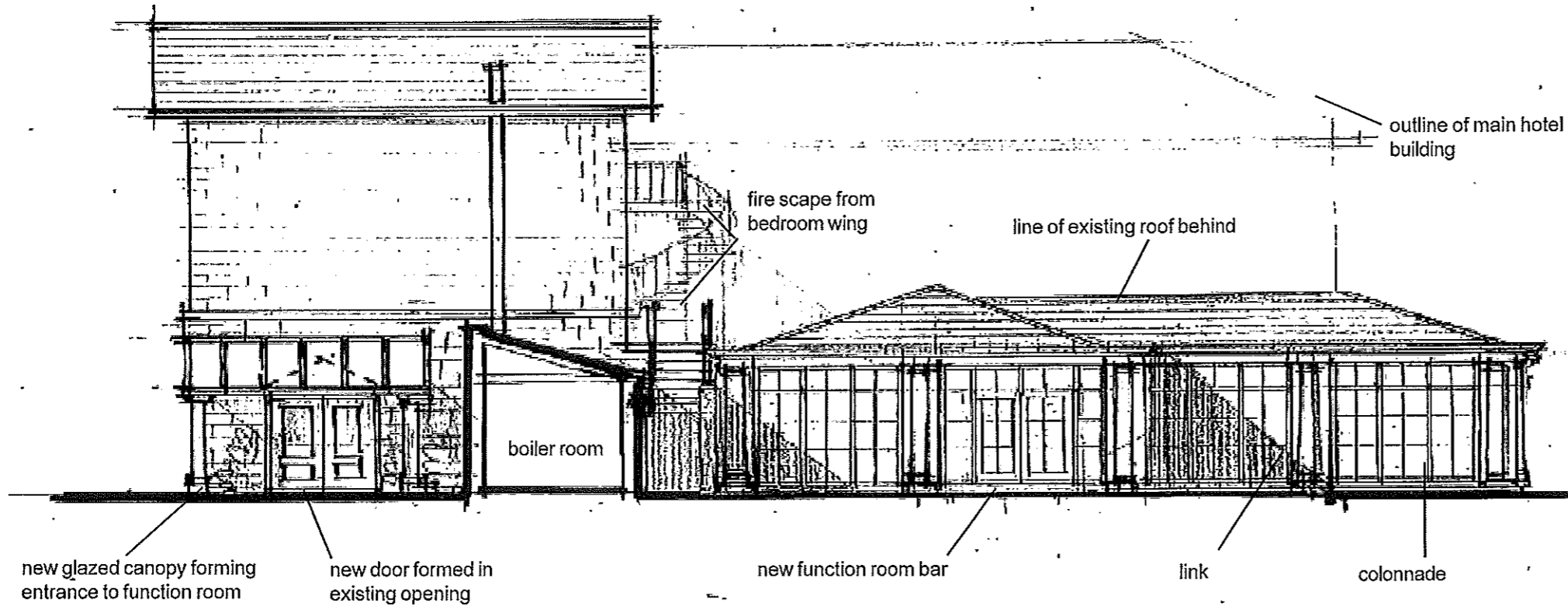


Proposed Alterations to the Hackness Grange Hotel
 Hackness, Scarborough, North Yorkshire
 For: Mr. R. Brooks



AMENDED

Notes

North West Elevation as Proposed (from Courtyard)

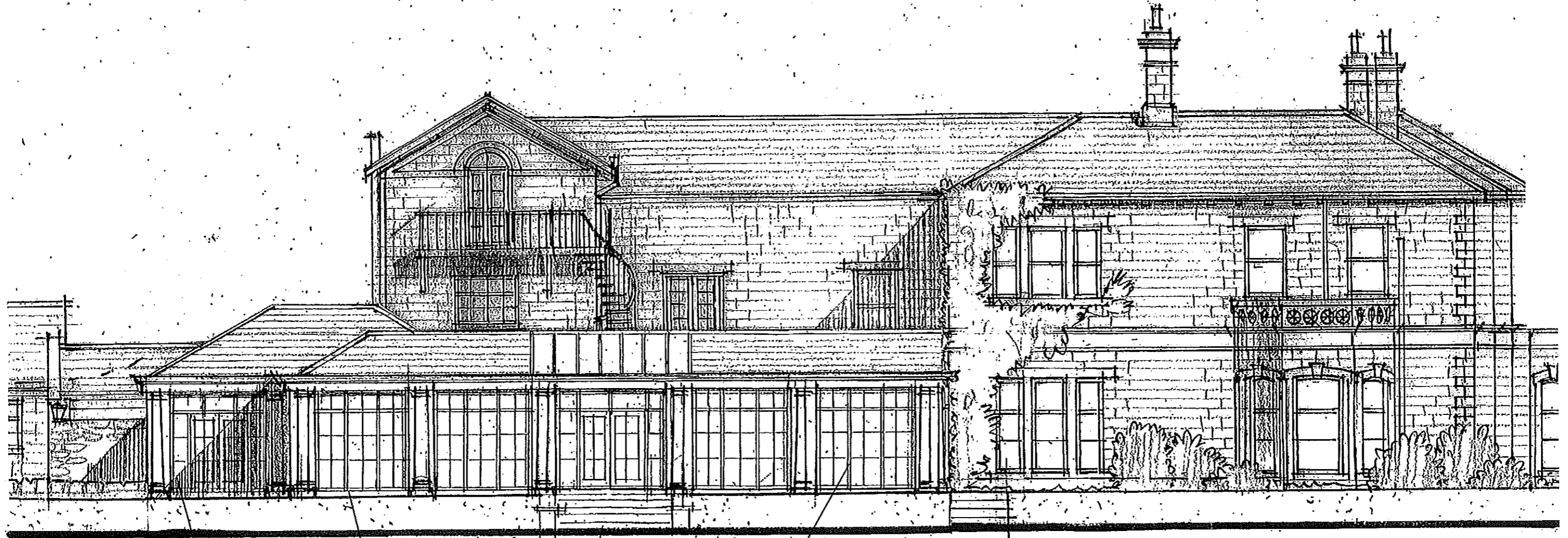
scale 1:200
 date - Oct '12
 ref. 13352/43B

NYM/NPA
 25 JAN 2013

Rev A - colonnade pediment revised 12-11-12
 Rev B - colonnade becomes orangerie 23-01-13

Alan Campbell Chartered Architect
 Cliff Bridge Studio, 7 Cliff Bridge Terrace
 Scarborough North Yorkshire. YO11 2HA

Proposed Alterations to the Hackness Grange Hotel
 Hackness, Scarborough, North Yorkshire
 For: Mr. R. Brooks



new function room bar

link

central access to garden
 with pediment and glazed
 lantern over leading to
 formal steps

"orangerie"

South West Elevation as Proposed

scale 1:100
 date - Oct '12
 ref. 13352/42B

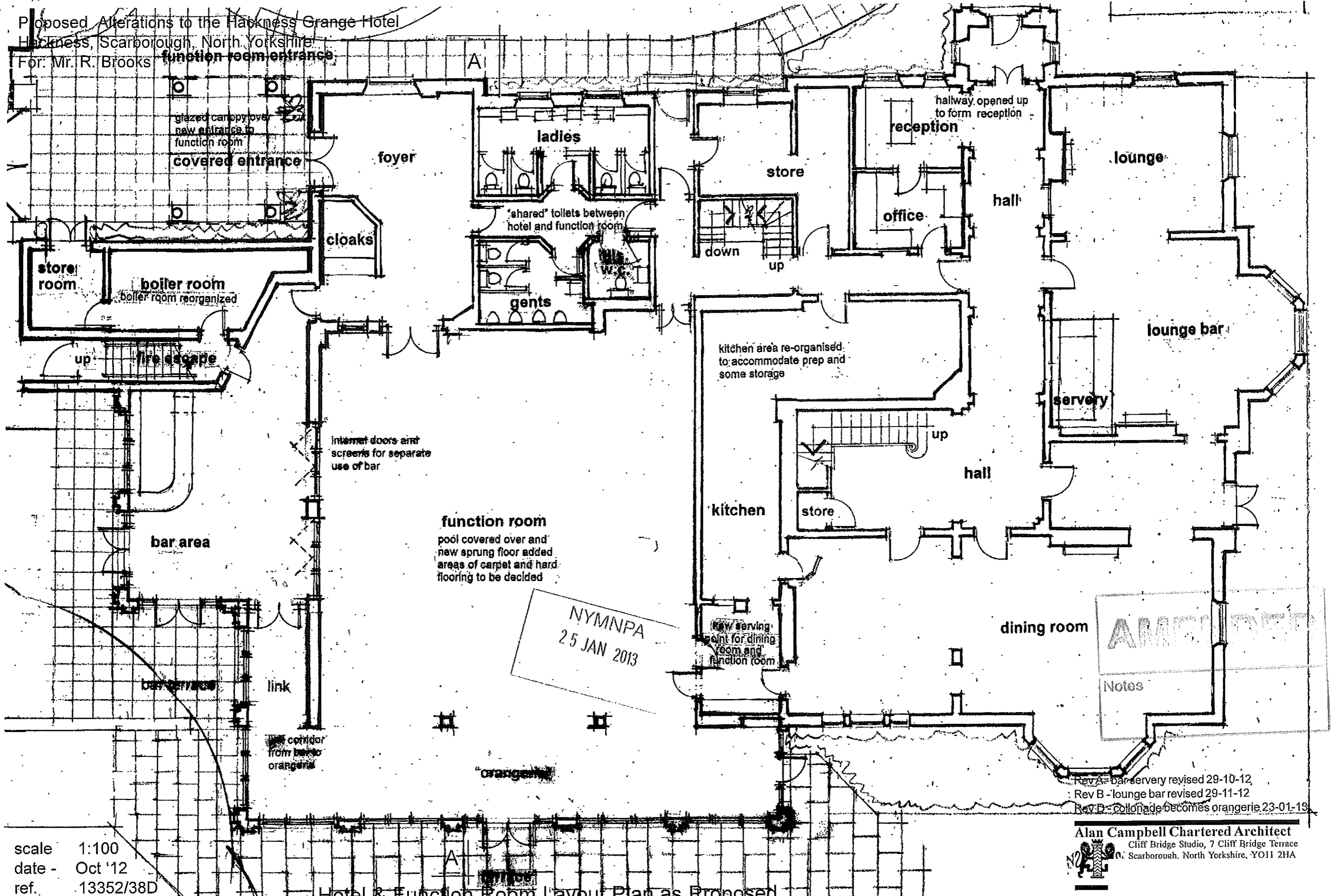
NYMNP
 25 JAN 2013

AMENDED
 Notes

Rev A - colonnade pediment revised 12-11-12
 Rev B - colonnade becomes orangerie 23-01-13

Alan Campbell Chartered Architect
 Cliff Bridge Studio, 7 Cliff Bridge Terrace
 Scarborough North Yorkshire. YO11 2HA

Proposed Alterations to the Harkness Grange Hotel
 Harkness, Scarborough, North Yorkshire
 For: Mr. R. Brooks



function room entrance

glazed canopy over new entrance to function room

covered entrance

foyer

ladies

"shared" toilets between hotel and function room

gents

reception

hallway opened up to form reception

store

office

lounge

hall

down

up

store room

boiler room

boiler room reorganized

fire escape

up

cloaks

kitchen area re-organised to accommodate prep and some storage

lounge bar

servery

intermat doors and screens for separate use of bar

up

hall

kitchen

store

bar area

function room
 pool covered over and new sprung floor added
 areas of carpet and hard flooring to be decided

dining room

new serving point for dining room and function room

NYMNPA
 25 JAN 2013

AMENDED
 Notes

link

corridor from bar to orangery

"orangery"

Rev A - bar servery revised 29-10-12
 Rev B - lounge bar revised 29-11-12
 Rev D - colonnade becomes orangery 23-01-13

scale 1:100
 date - Oct '12
 ref. 13352/38D

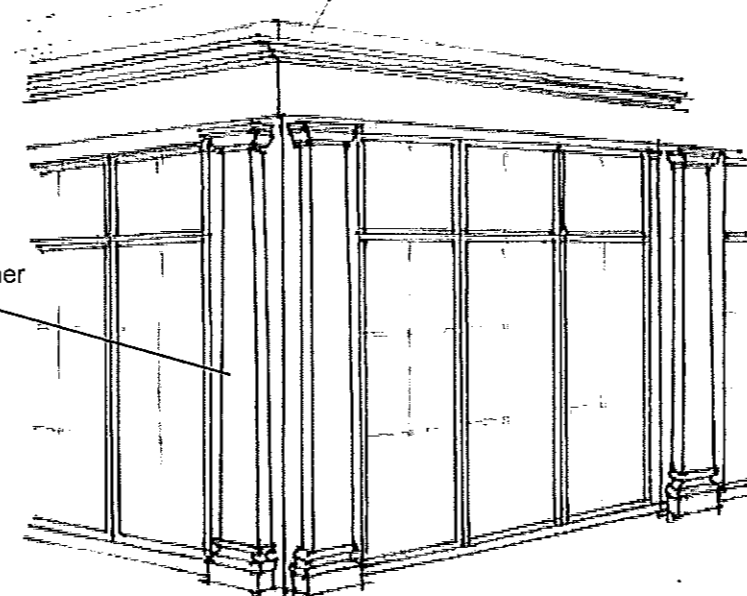
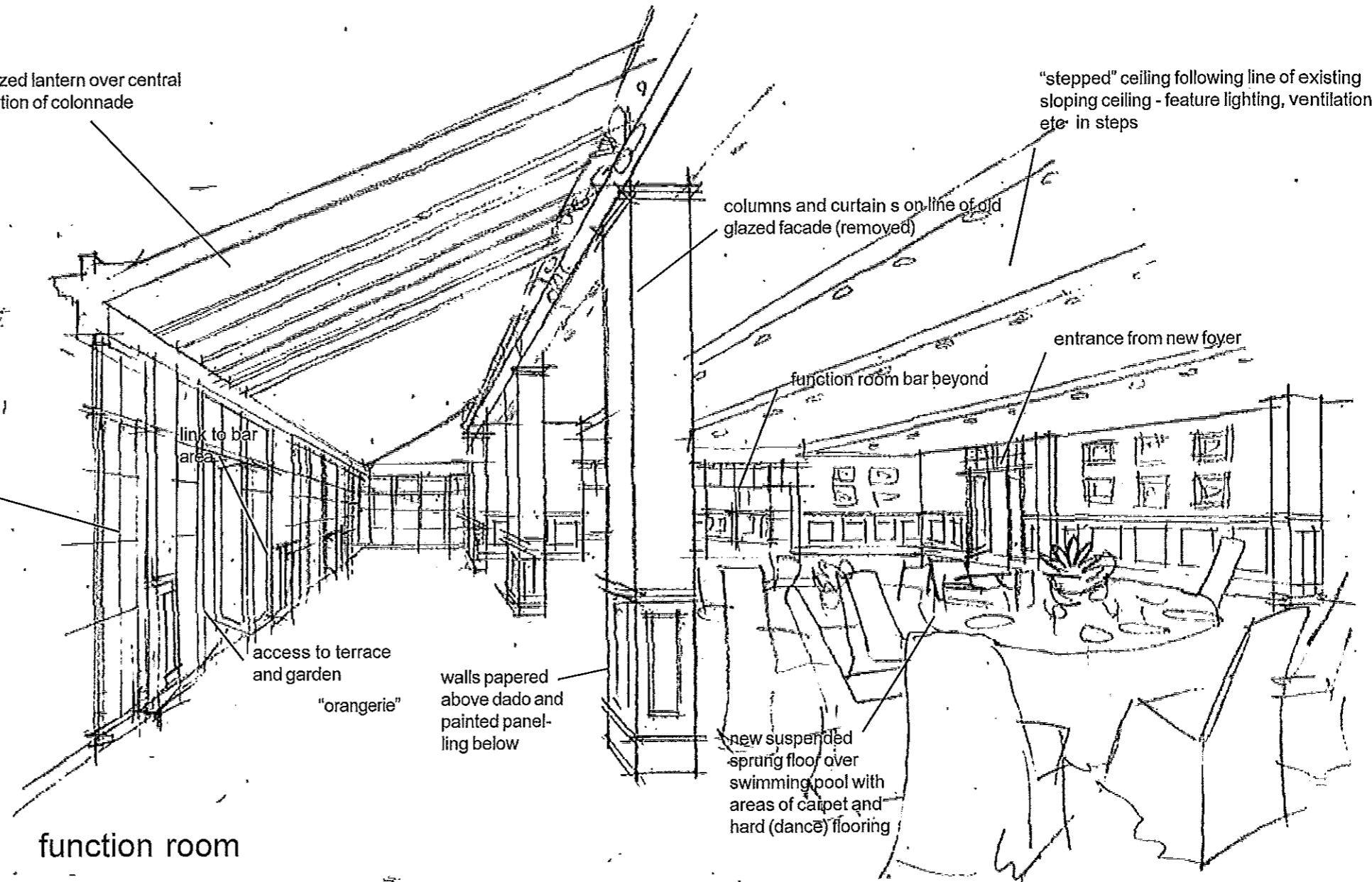
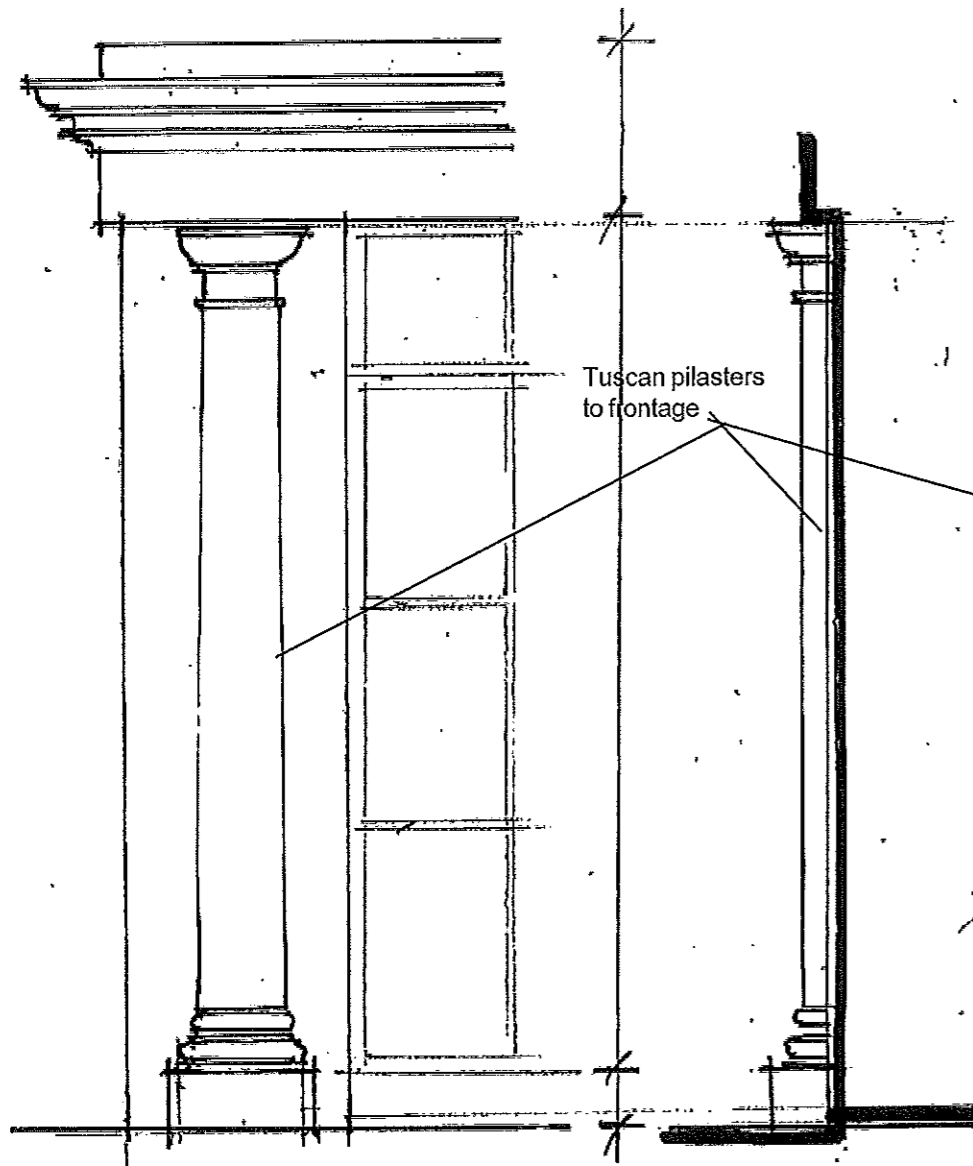
Alan Campbell Chartered Architect
 Cliff Bridge Studio, 7 Cliff Bridge Terrace
 Scarborough, North Yorkshire, YO11 2HA

Hotel & Function Room Layout Plan as Proposed

Proposed Alterations to the Hackness Grange Hotel
 Hackness, Scarborough, North Yorkshire
 For: Mr. R. Brooks

glazed lantern over central portion of colonnade

"stepped" ceiling following line of existing sloping ceiling - feature lighting, ventilation etc in steps



colonnade column detail

Miscellaneous sketches 2.

scale n.t.s.
 date - Oct '12
 ref. 13352/51A

NYMNP
 25 JAN 2013

Rev A - colonnade revised to become orangerie
 23-01-13