

DALTON COTTAGE

-

EGTON BRIDGE

PHOTOGRAPHIC RECORD of EXISTING

NYMNPA

19 JUL 2012

JUNE 2012

Malcolm Watson RIBA

Delves Farm - Egton Grange – Whitby

Tel. No. 01947 - 895457

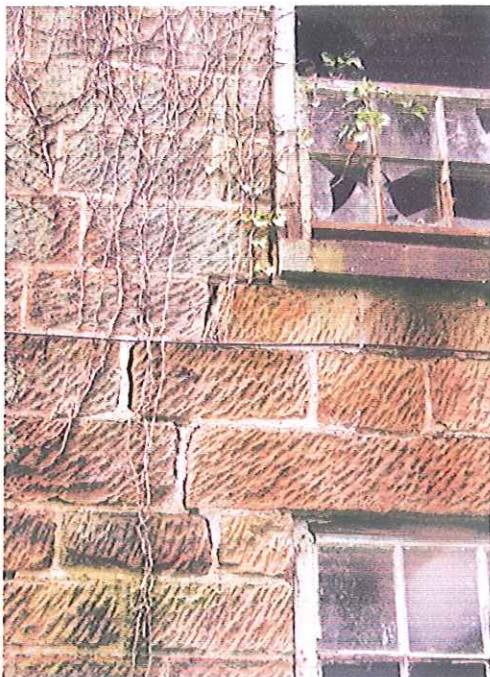
NYMN

19 JUL 2012

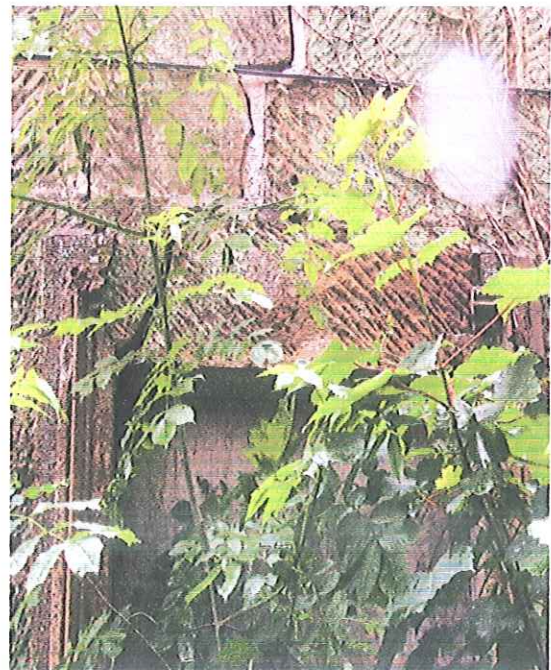
Dalton Cottage - Egton Bridge



West Elevation



West Elevation:
Windows; reveals – cill – lintel
Wall cracks



West Elevation:
Cracked lintel
Incomplete door surround moulding

Dalton Cottage - Egton Bridge

NY
19 JUL 2012



North Elevation



Extension Window Cill / lintel Detail



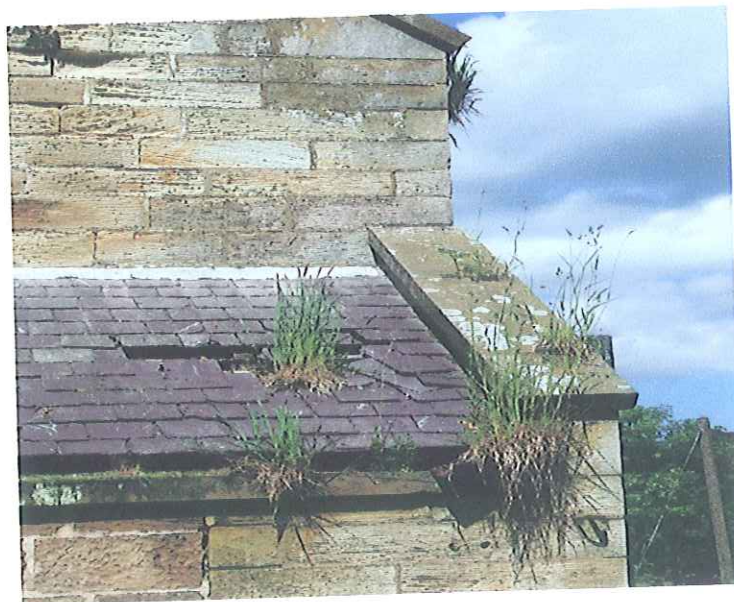
Wall junction between Main and Extension

**Dalton Cottage - Egton Bridge
East Elevation**

19 JUL 2012



Derelict Garage in foreground obscured by fallen tree



Lean-to Detail of Eaves [no gutter] and coping tableting

**Dalton Cottage - Egton Bridge
South Elevation**

NYMNP
19 JUL 2012



Collapsed Wall / Roof at junction of extension and Main Structure



Detached Outbuilding

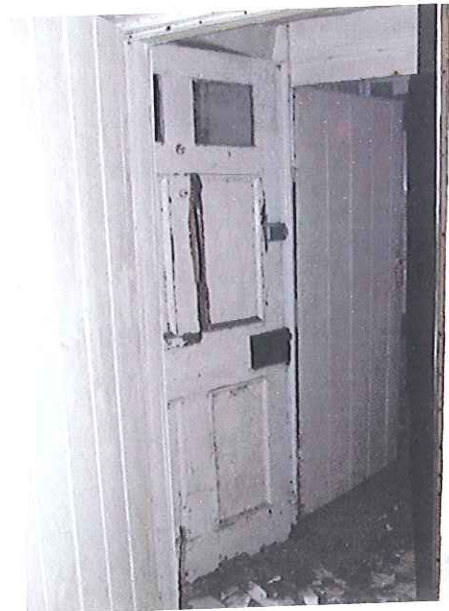


Chimney / Gable Coping / Ridge

Dalton Cottage - Egton Grange

Front Entrance Lobby

NYMA
19 JUL 2012



Front Door



Front Door Hinge



Staircase

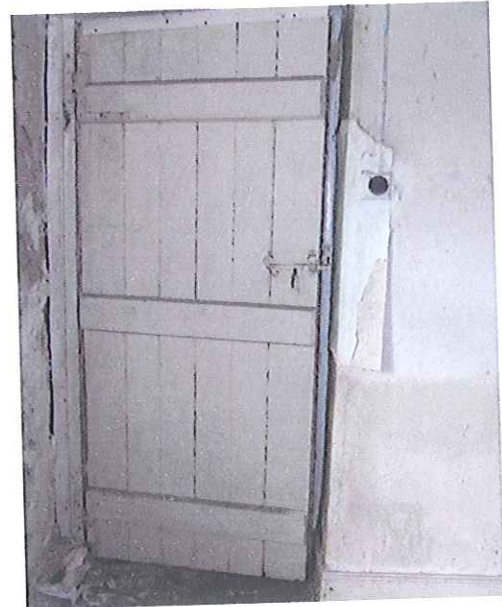
Dalton Cottage - Egton Bridge

Ground Floor: South Room

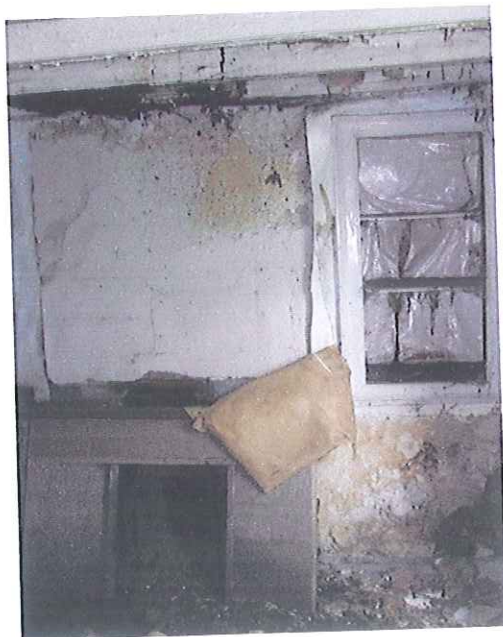
NYM
19 JUL 2012



Window Reveal Lining Board



Boarded Door to Lobby



Detached Fireplace and Wall Cupboard



Collapsed Timber Floor

**Dalton Cottage - Egton Bridge
Ground Floor: North Room**

NYMNI
19 JUL 2012



Fireplace Opening / Wall Shelves



Door to Lobby / Window / Wall Cupboard / Shelves



Boarded Door Hinge and Latch Detail

**Dalton Cottage - Egton Bridge
Ground Floor: Rear Extension**

NY*

19 JUL 2012



**From North Room through Rear Lobby
to Extension Kitchen with 4 Panel Door**



Pantry - 4 Panel Door



**Kitchen Boiler Position
Side Wall Cupboard**



Kitchen - Ceiling Boards Collapsed

NYMNP

19 JUL 2012

**Dalton Cottage - Egton Bridge
First Floor**



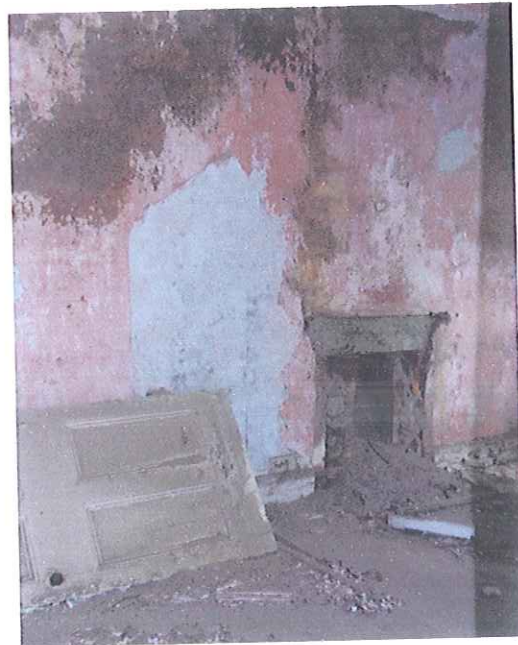
**Landing through to Rear Bedroom
Collapsed Floor / Wall**



Landing - collapsed Ceiling / Roof



North Bedroom Door



South Bedroom